

Joint Implementation of Health Promoting Schools

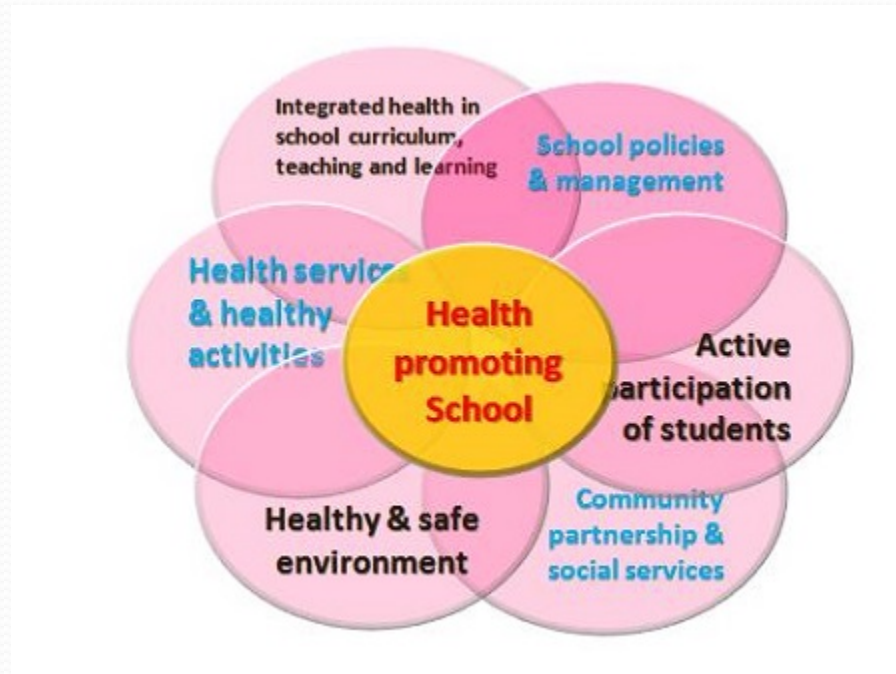
Dr Htin Lin
Dy Director General
Department of Public Health
Ministry of Health and Sports
13 June 2019, MICC II

Myanmar National Comprehensive School Health Strategic Plan (2017-2022)



Myanmar National Comprehensive
School Health Strategic Plan
(2017-2022)

Health Promoting School Framework



Comprehensive SH strategic framework

S1. Strengthen HPS structure and system

S2. Improve Health and Well-being through health literacy and health services

CSH

Strategies

S3. Harmonize Health and Education through HPS

S4. Strengthen communities participation in Health Promoting School Activities

To Strengthen Health Promoting School structure and system

- National/State/Regional school health committee
 - ✓ Develop HPS implementation Guidelines (MOHS)
 - ✓ Organize SH committees at all levels (MOHS)
 - ✓ Organize HPS teams in each school (MOE)
 - ✓ Develop annual HPS plan and report at school (MOE)
- Increase systematic financial support for school health programme

To Improve health and well-being through health literacy and services

- Coordinate with all relevant sectors to support schools to advance SH activities
- ✓ SH service covering oral health, eye health, sexual and reproductive health and rights, gender equality, alcohol and substance abuse, mental health, climate change and disaster preparation

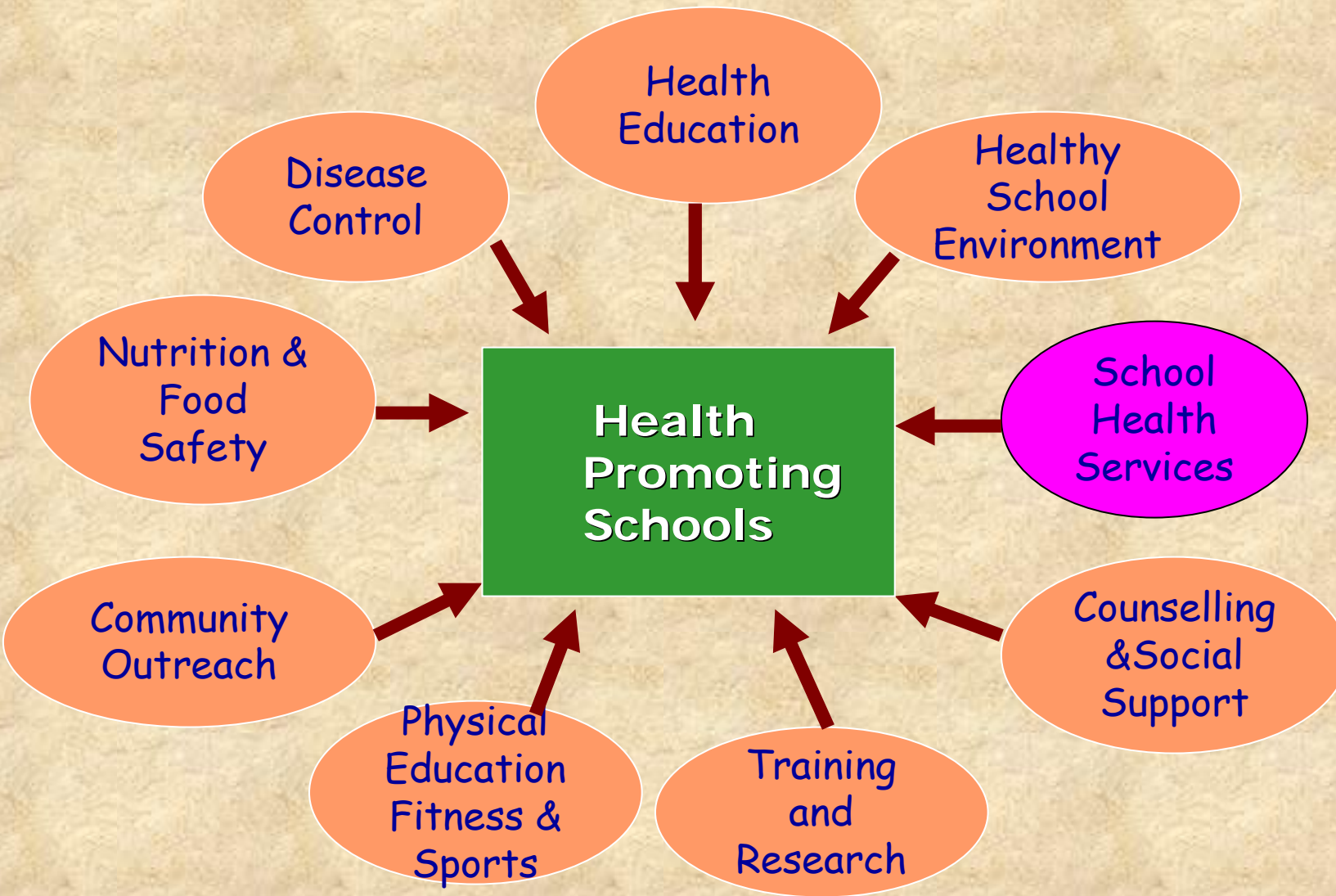
To Harmonize health and education through HPS

- Strengthen HE and literacy to all schools, students, staffs, including formal LSE
- ✓ Include SH as one of major subjects in Teachers' training curriculum
- ✓ Regular HPS training to teachers at township level
- Strengthen Healthy School components under CFS (MOE)
- Support education enrolment by improving school environment(MOE)

To Strengthen SH partnership with communities

- Strengthen partnership with communities to enhance continuation of health services and supports (Organize well-functioning PTA)
- Partnership with communities to generate secure, safe, healthy environment for children inside and outside school boundary

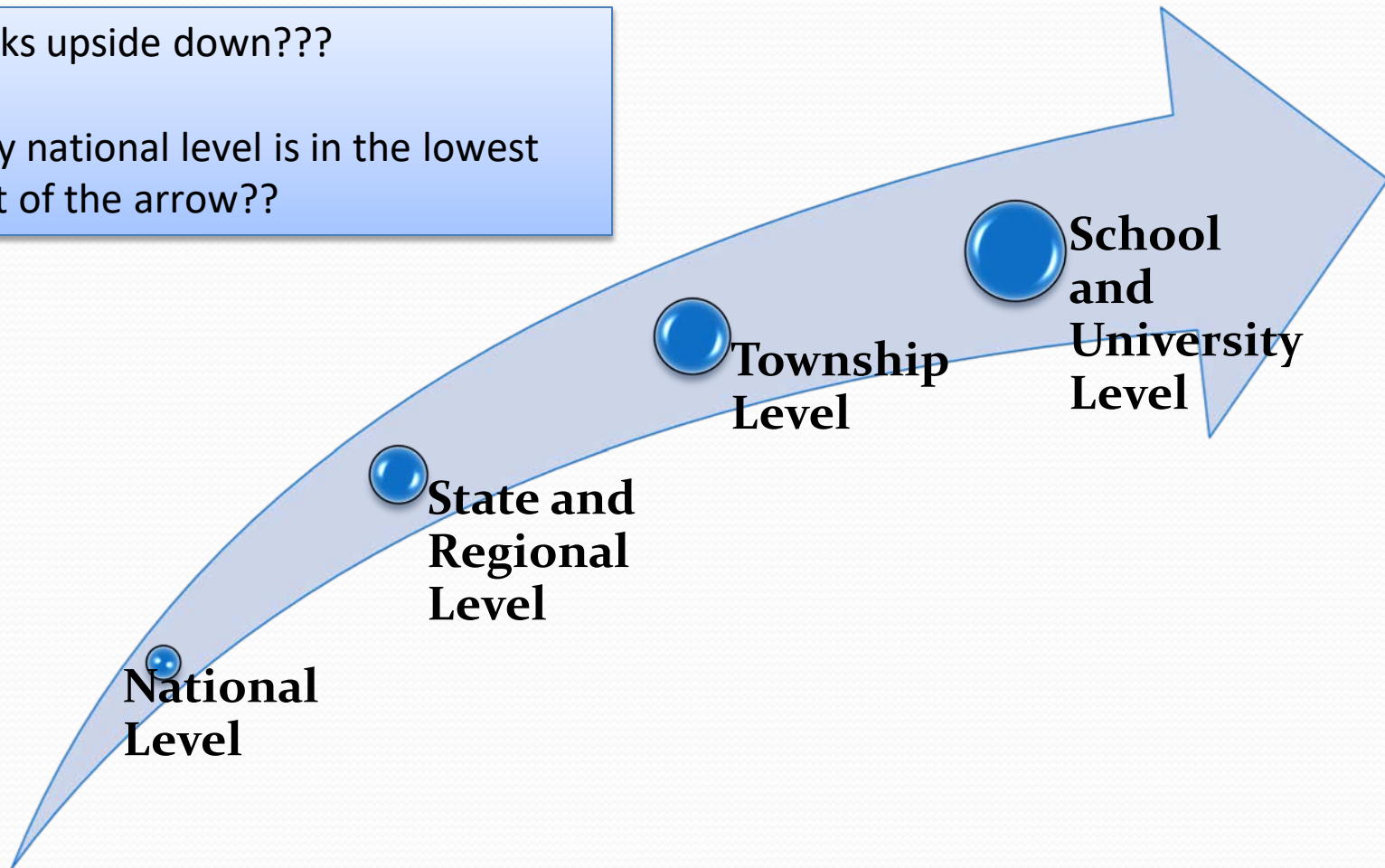
HEALTH PROMOTING SCHOOL COMPONENTS



How do our strategies go to school?

Looks upside down???

Why national level is in the lowest part of the arrow??



National Level

- Ministries (Health, Education, Home Affair,.....
 - Policies, Strategies
 - Plans and Guidelines
 - Financial Support
 - Human Resources Recruitment
 - Capacity Building
 - Monitoring and Evaluation
 - Nation-wide Public Awareness Raising (through Event campaigns, IEC Materials, Radio, Mass Media, etc...)

State and Regional Level

- S & R level Health departments of Health, Education, Administrative
 - Meeting and discussions
 - Plan according to individual geographic, nature, culture, community and school settings and man power
 - Proper supporting, instructions and detail guidelines to township level
 - Monitoring the activities

Township Level

- Township level Health departments of Health, Education, Administrative plus School Admins
 - Implementing plan according to Number of schools, teachers, students, health persons and geographic location
 - Detail instructions to teachers, SH teams, BHS (including defining the frequency of activities)
 - Support and Capacity building
 - Monitoring and Feedback

For example

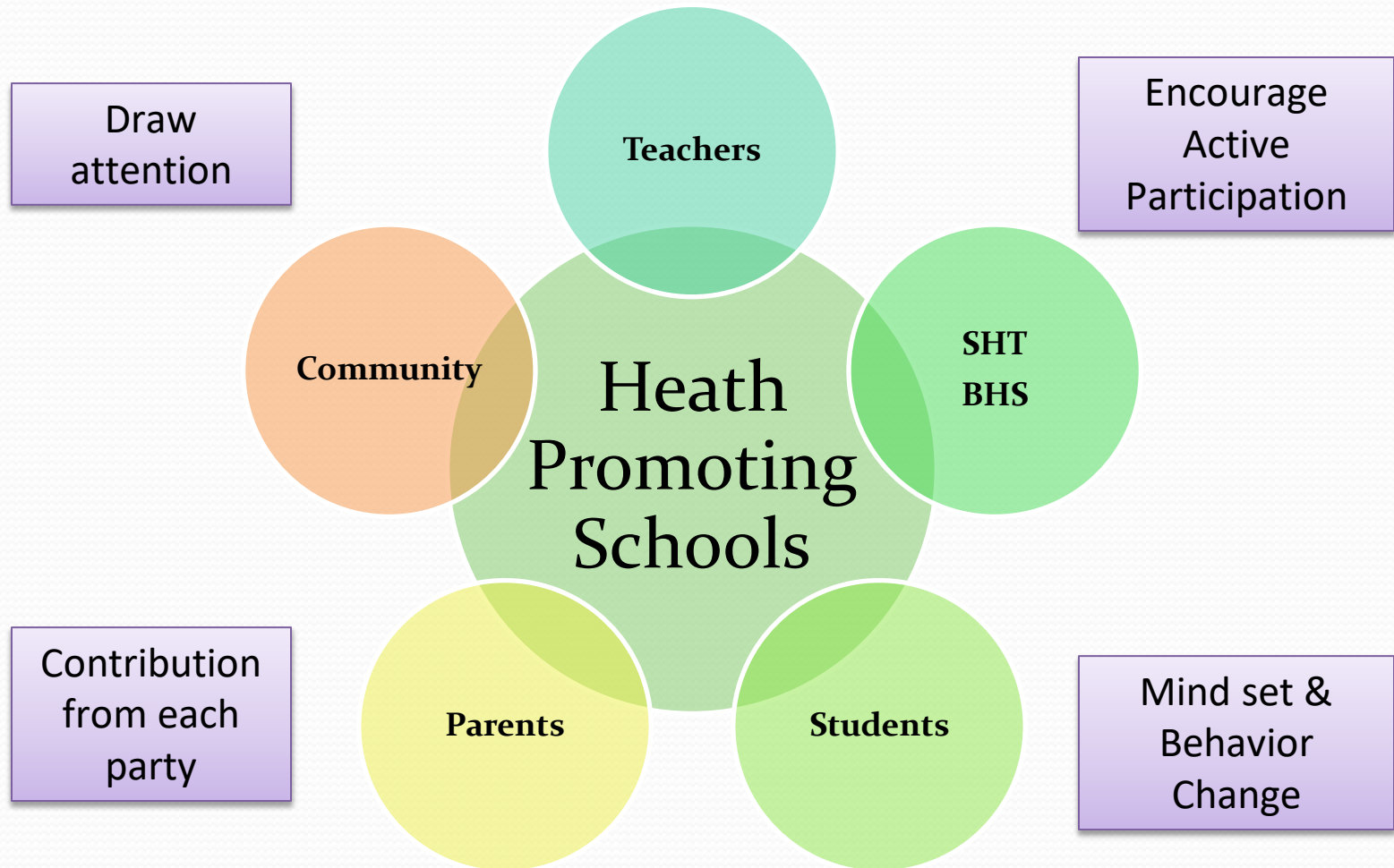
- For National level plan

No. of schools	No. of SHC	Ratio	No. of RHCs	Ratio	No. of SCs	Ratio
45,482	330	138 : 1	1,849	25 : 1	8,416	6 : 1

No. of students	No. of MWs	Ratio	No. of BHS	Ratio
9,144,469	13,499	677 : 1	29,345	312 : 1

- *The same principle apply for S & R, township level*
- *Depending on these ratios and job assignment, duty roster and frequency of visits can be defined for school health activities*

At Schools



What kind of behavior change we want???

- No Drug Addicts
- No Tobacco
- No Alcohol
- Healthy Lifestyle
- Proper School Feeding Practices
- Reduce RTA
- Reproductive Health Knowledge and Safe Practice
- Less Screen Time and No Gaming Disorder

What to expect from.....

- Teachers
 - Monitoring the behaviors of the students
 - Giving health education and life skills according to curriculum
 - Report to health persons for special case
- Health Persons
 - Regular visits and regular health check
 - Treat according to the finding and refer if needed
 - Take action accordingly for special case
 - Record cases

What to expect from.....

- Parents
 - Participate in school health activities
 - Cooperative with teachers and health persons
 - Monitoring the students behavior at home
- Community
 - Support the schools to be safe, healthy and enabling environment for students
 - E.g., Selling safe food at school, No tobacco use near schools, Drive slow and safe near schools, etc...
 - Watch and care students as needed

What to expect from.....

- Students
 - Active participation
 - Change involuntary to voluntary participation
 - Peer education and peer pleasure
 - Behavior change
 - Become good Parents, Teachers, Community, ... etc

How to motivate?

- Consider the class and rank of school rather than outstanding performance
- Appreciate more for improvement compare to existing condition
- Recognize and acknowledge all the effort made by the implementers and active participations
- Appreciate all involving sectors

How to motivate?

- Score based on
 - Community participation rather than government investment
 - Student participation rather than staff performance
 - Regularity rather than check point finding
 - Daily practices rather than ceremony activities

Challenges !!!!

- ?
- ??
- ???
- ????
- ?????



Thank you