



Ministry of Health and Sports (Myanmar)

Department of Public Health

Central Epidemiology Unit

(3 October 2020)

Coronavirus Disease 2019 (COVID-19)

Situation Report - 179

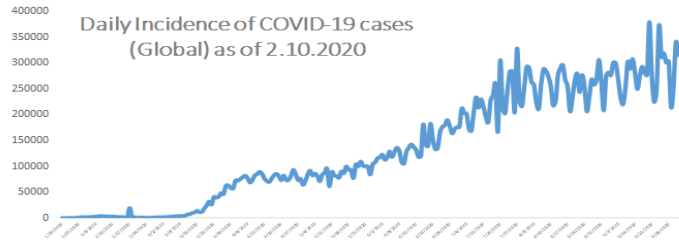
Data as reported by States and Regions by 2 October 2020

WHO Coronavirus Disease (COVID-19) Dashboard data as of 3:15 PM CEST 2 October 2020

Confirmed cases
34,157,909

Deaths
1016,981

Case Fatality Rate
3%



Myanmar Situation

Total Tested
278,076

Confirmed Cases
15,525

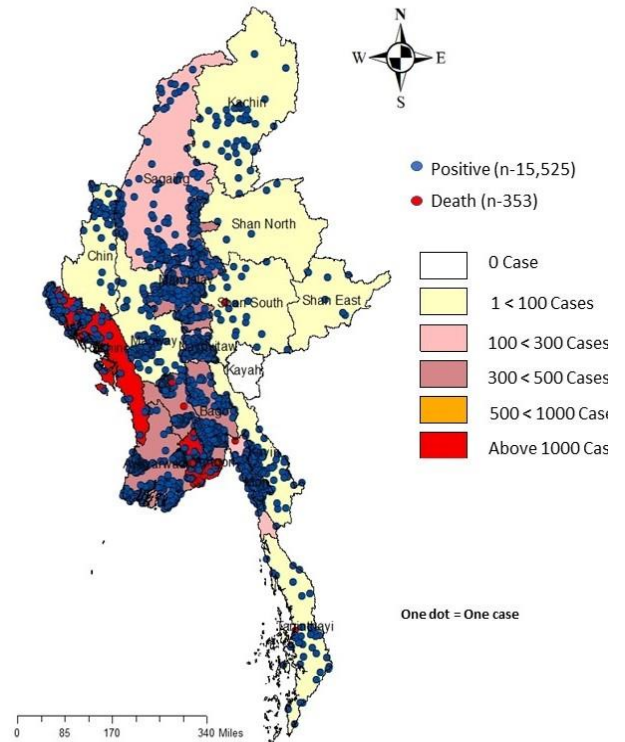
Negative
262,551

Discharged
4,378
28.2% of Confirmed cases

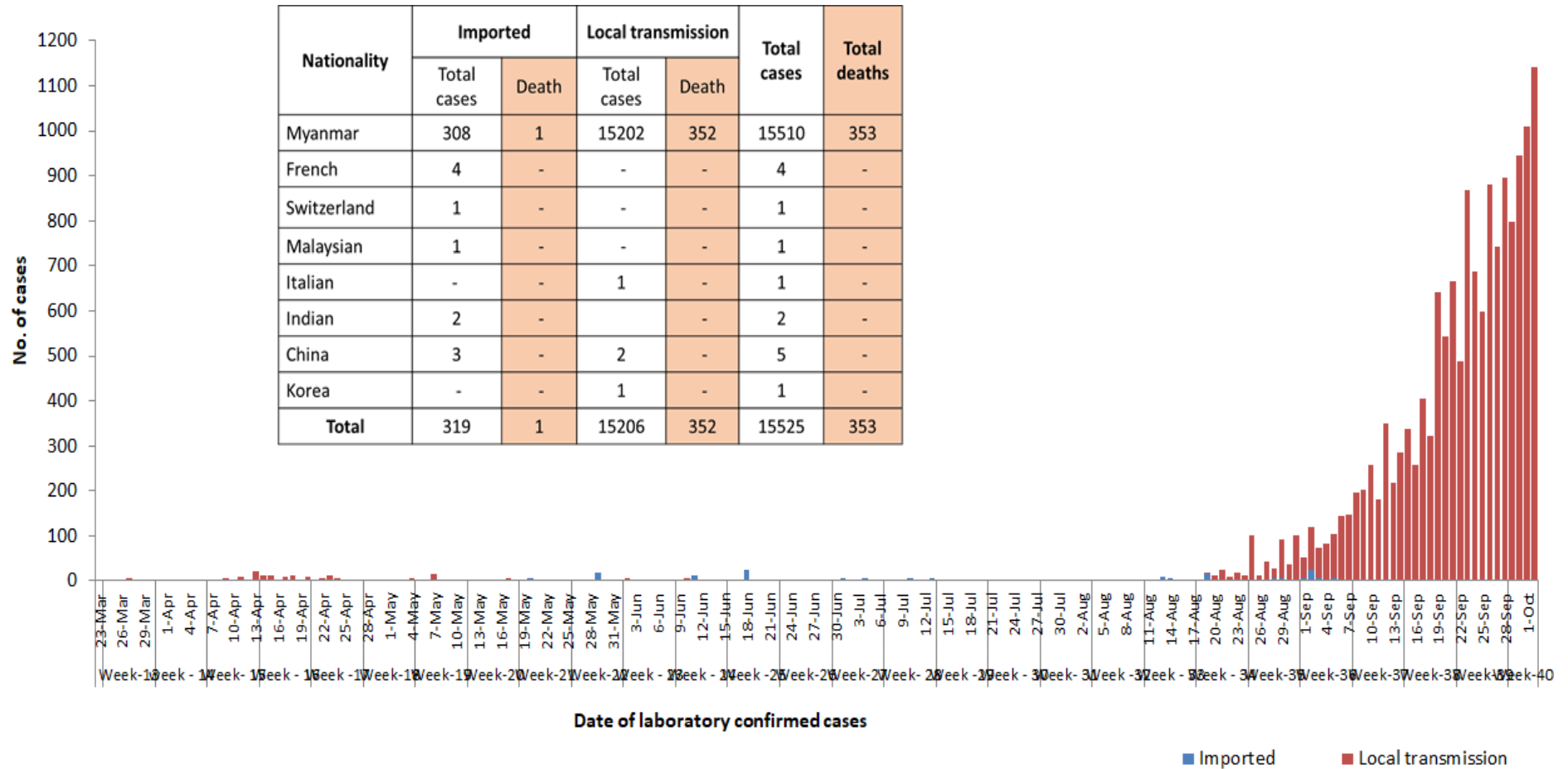
Death
353
2.3% of Confirmed cases

No	State/Region	COVID-19 Confirmed case	New confirmed cases within 24 hours	Deaths
1	Yangon	11,997	1,050	333
2	Rakhine	1,590	9	4
3	Bago	396	3	3
4	Mandalay	371	22	1
5	Ayeyarwaddy	371	25	-
6	Mon	296	6	6
7	Naypyitaw	141	5	3
8	Sagaing	107	16	-
9	Kachin	51	1	-
10	Kayin	49	-	1
11	Magway	45	1	-
12	Chin	39	-	-
13	Thanintharyi	37	-	1
14	Shan (South)	24	4	1
15	Shan (East)	6	-	-
16	Shan (North)	5	-	-
17	Kayah	-	-	-
Total		15,525	1142	353

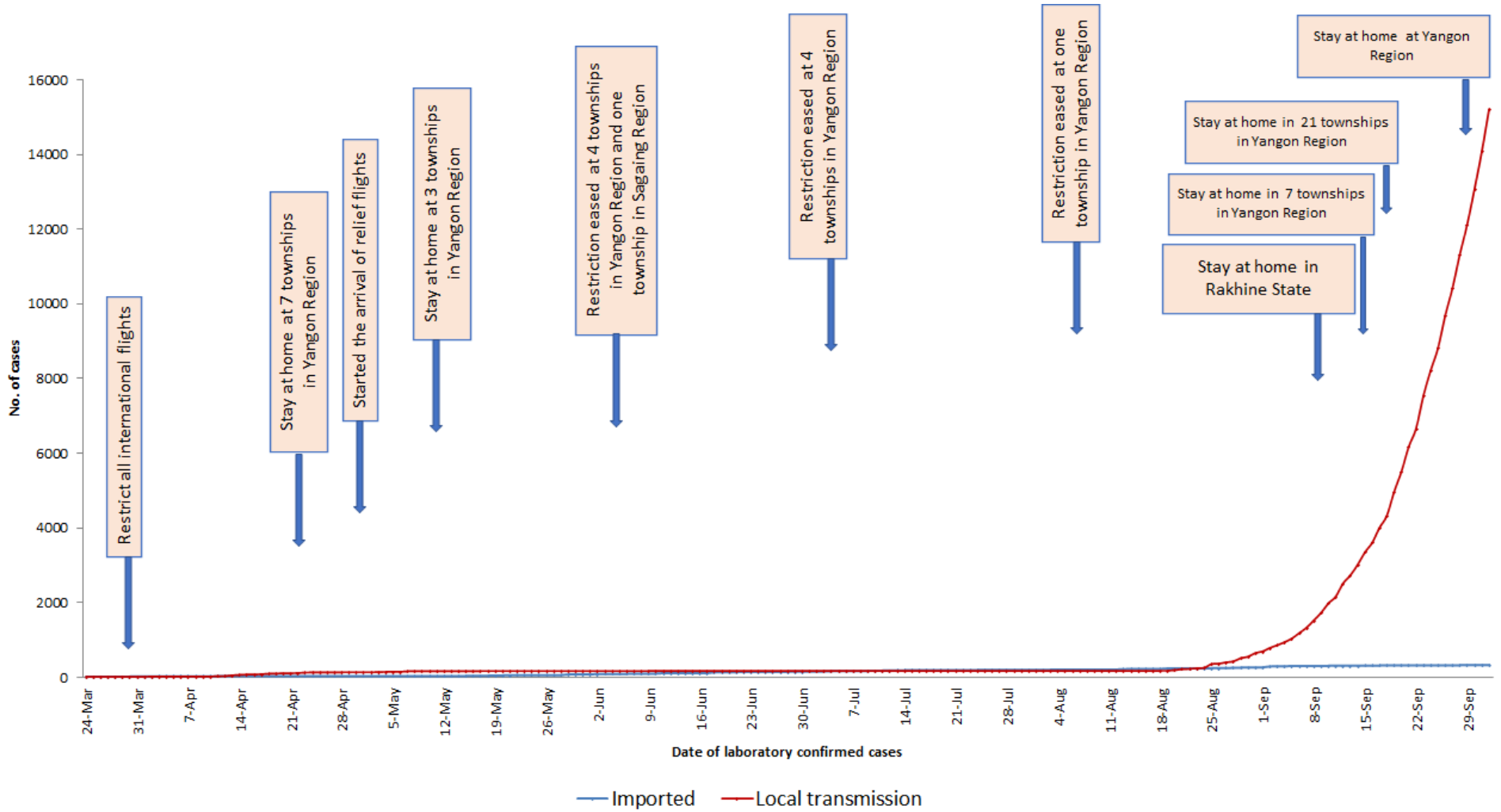
Map showing COVID-19 laboratory confirmed cases



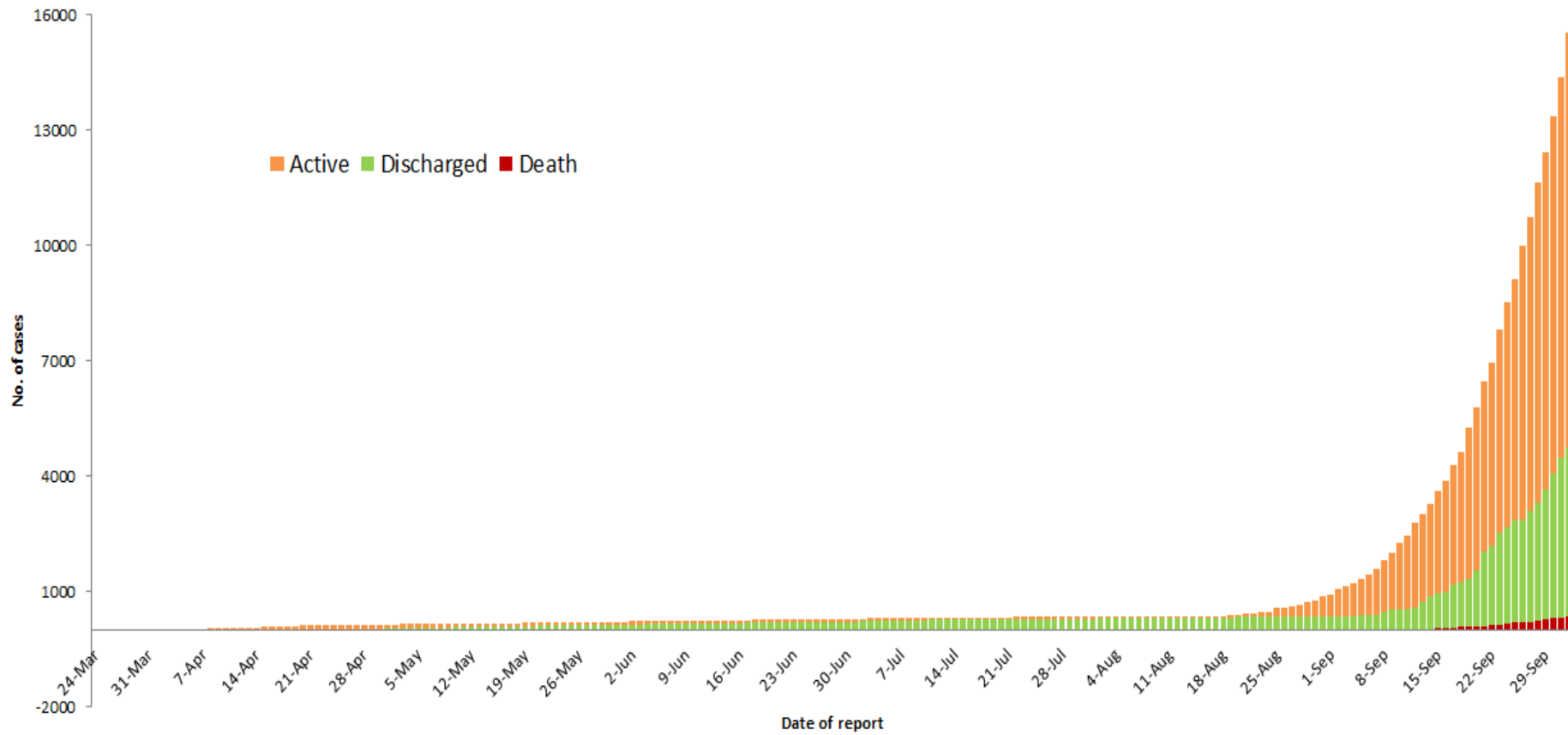
COVID-19 confirmed cases by types of transmissions (as of 2.10.2020) n=15,525



Total laboratory confirmed cases by date (as of 2.10.2020), n= 15,525



Cumulative Number of active confirmed cases, recovered and deaths (23.3.2020 – 2.10.2020), n (cumulative)=15,525



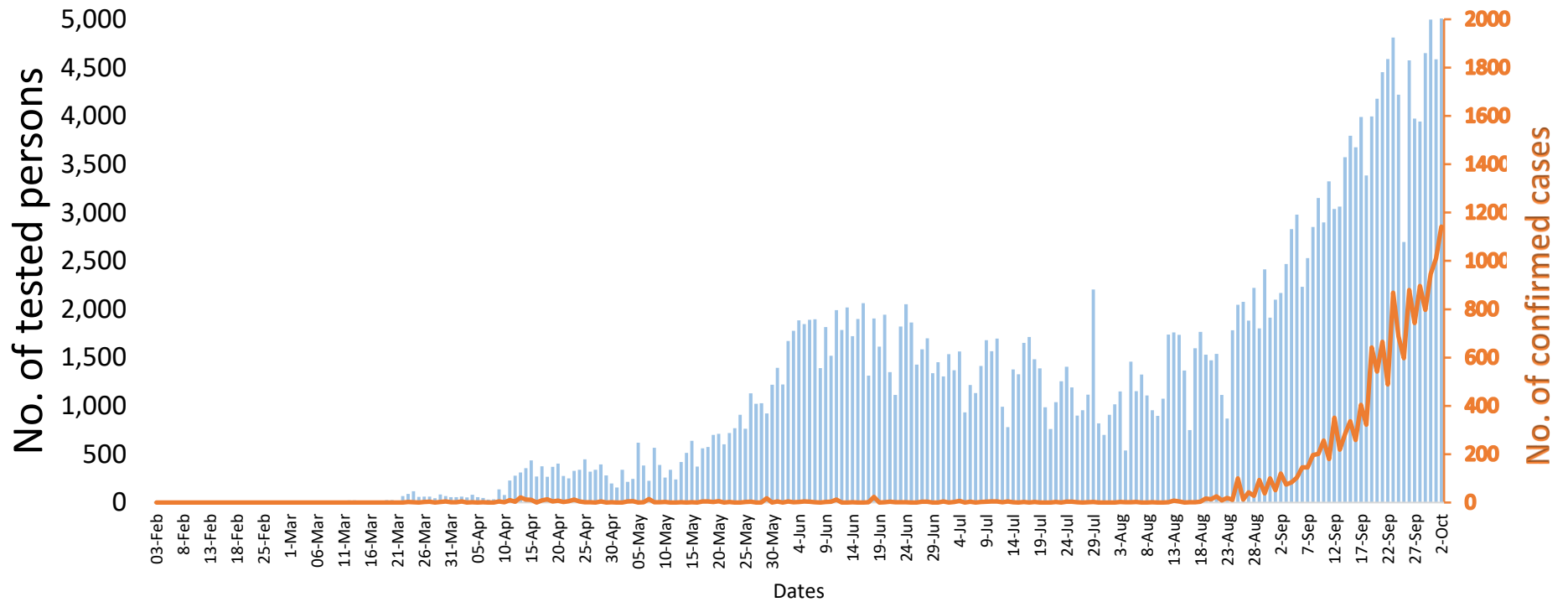
Summary of current situation		
Type	New (1.10.2020-1.10.2020)	Total (on 2.10.2020)
Suspected and Person Under Investigation (PUI)	574	1,498
Hospital Quarantine	38	347
Facility Quarantine	3,518	45,491

Person under Investigation (PUI) by State/Region hospitals (31.1.2020 – 2.10.2020) n= 17,157	No. of Facility Quarantine sites and Quarantined people on 2.10.2020
--	--

No.	State/Region	PUI	No.	State/Region	No. of facilities	Total no. of quarantine
1	Yangon	10895	1	Bago	1118	8481
2	Mandalay	2434	2	Ayeyarwaddy	1143	6068
3	Mon	687	3	Yangon	87	4845
4	Kayin	478	4	Magway	632	4589
5	Magway	410	5	Sagaing	665	4283
6	Rakhine	354	6	Kachin	252	3322
7	Bago	342	7	Mandalay	404	2804
8	Shan (N)	339	8	Mon	101	2671
9	Ayeyarwaddy	324	9	Kayin	352	1883
10	Shan (S)	148	10	Rakhine	298	1590
11	Thanintharyi	147	11	Shan South	115	1306
12	Shan (E)	140	12	Tanintharyi	153	1039
13	Sagaing	132	13	Shan North	382	952
14	Naypyitaw	104	14	Naypyitaw	11	787
15	Kayah	87	15	Kayah	12	358
16	Kachin	83	16	Chin	26	350
17	Chin	53	17	Shan East	19	163
Total		17,157	Total		5,770	45,491

*Facility quarantine rule changed from 21 days to 14 days on 11-9-2020 while 7 days home quarantine rule remain unchanged.

COVID-19 confirmed cases among tested by date (as of 2.10.2020)

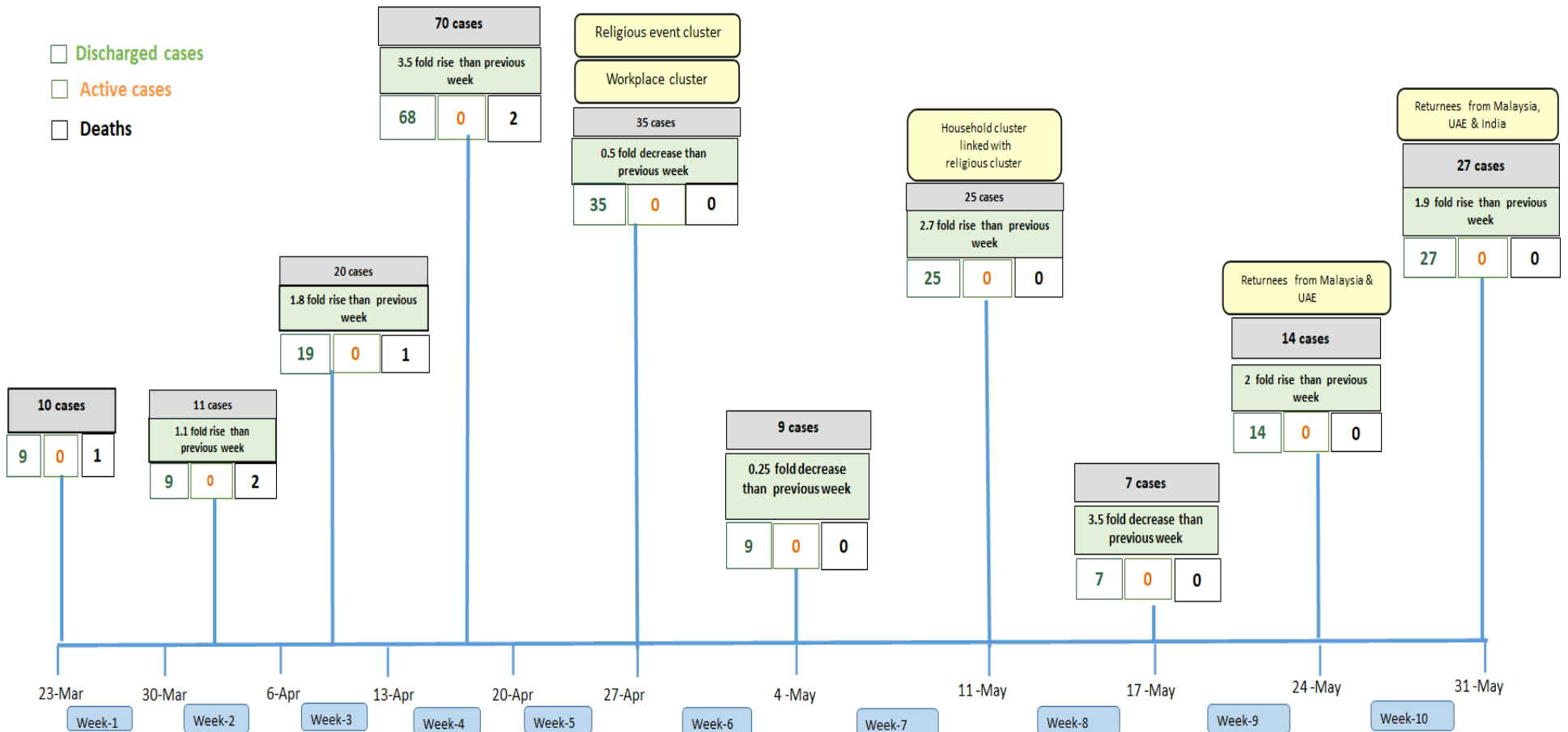


Total tested persons - 278,076

Total confirmed cases - 15,525

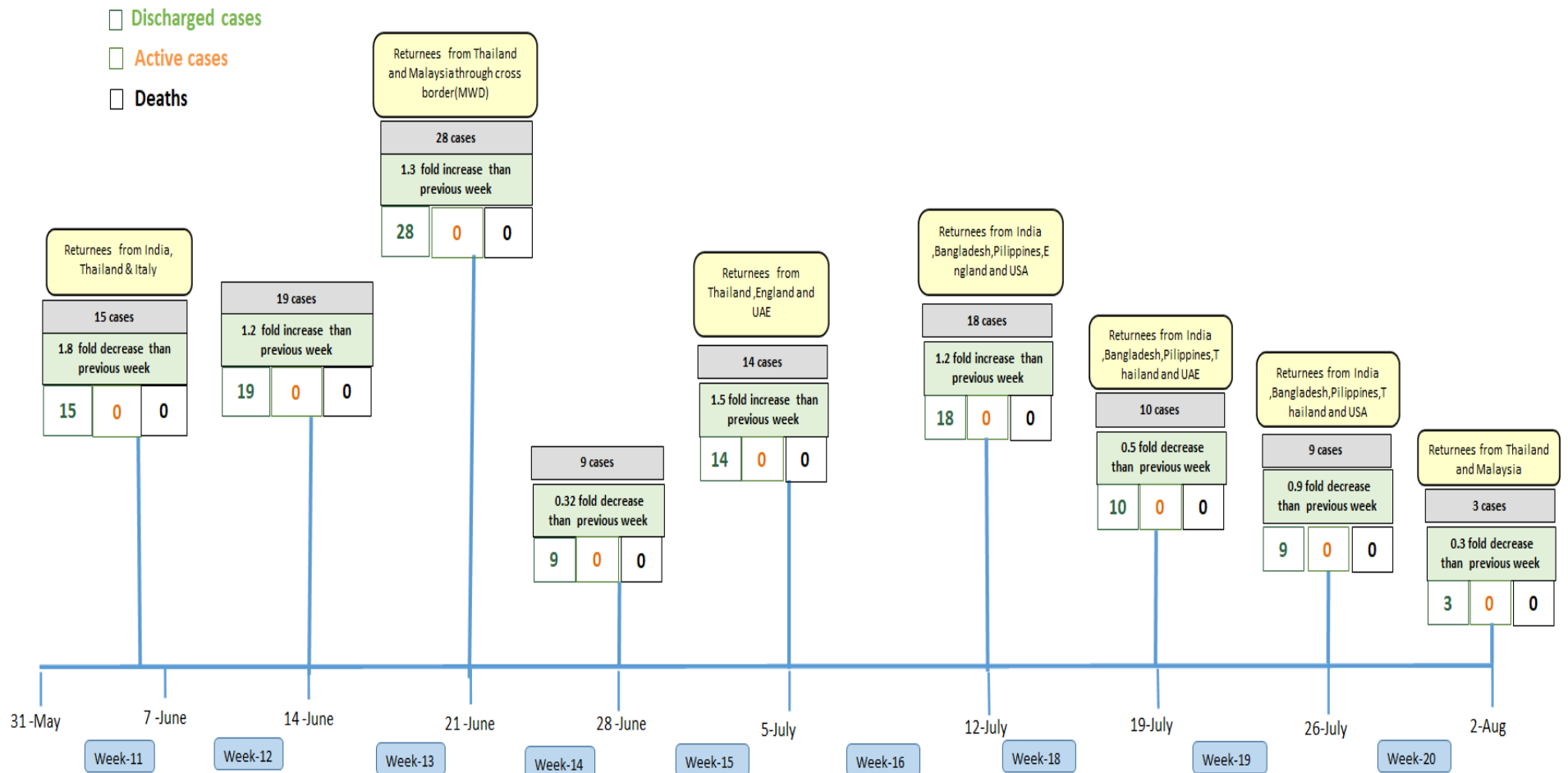
Tested person Confirmed case

Summary of new confirmed cases detection after first two cases (as of 2.10.2020)



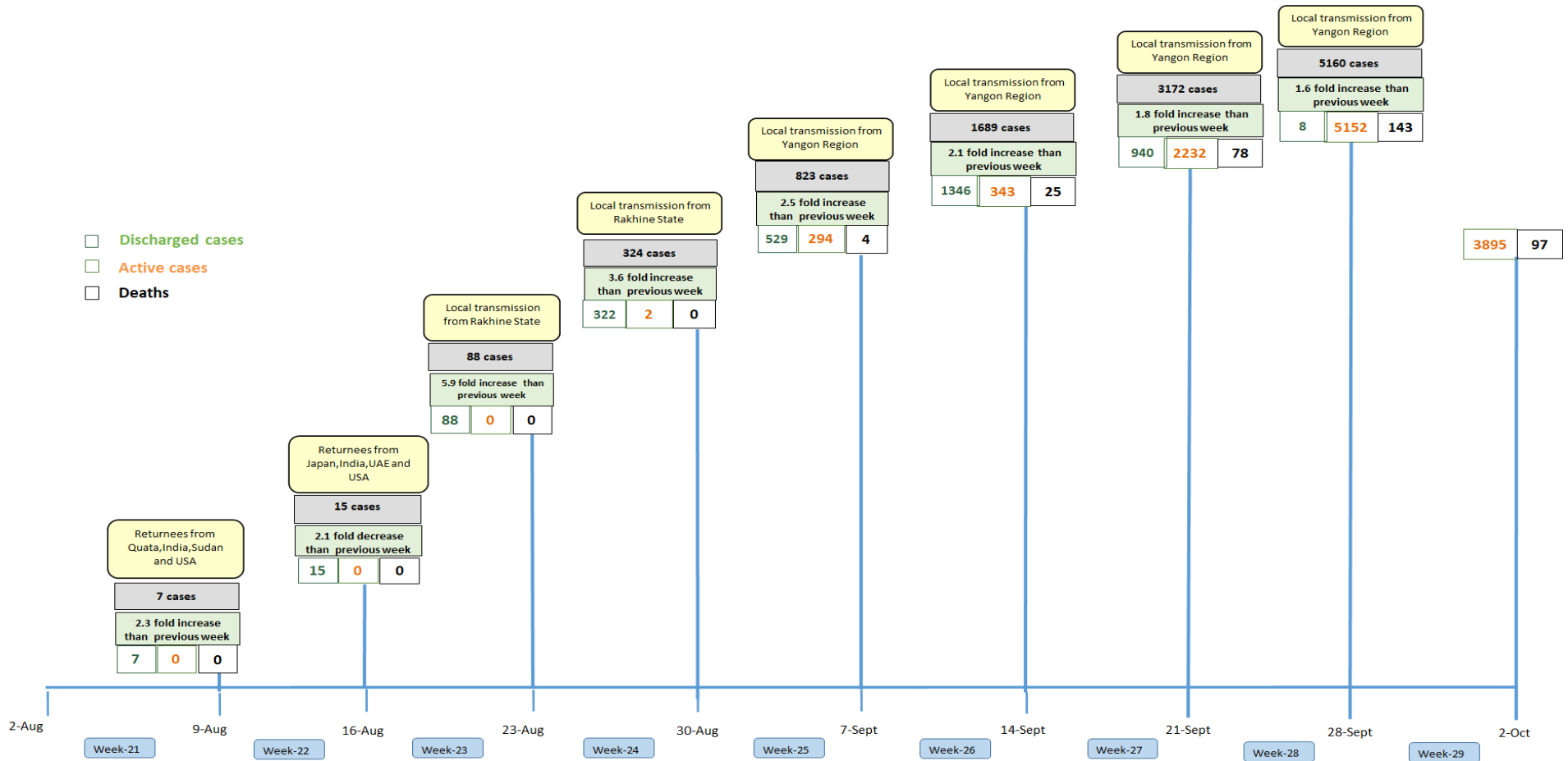
- Confirmed cases were detected as a peak in the 4th week after first confirmed cases due to the religious event cluster.
- Confirmed cases were decreased but still raised than the first 3 weeks due to the religious event cluster and workplace cluster.
- There were an increased in numbers of cases in the 7th week after the first two cases due to the household cluster linked with a religious cluster.
- Confirmed cases were detected by a nearly two-fold rise in the 9th and 10th weeks after the first two cases because of returnees coming back by relief flights.

Summary of new confirmed cases detection after first two cases (as of 2.10.2020)



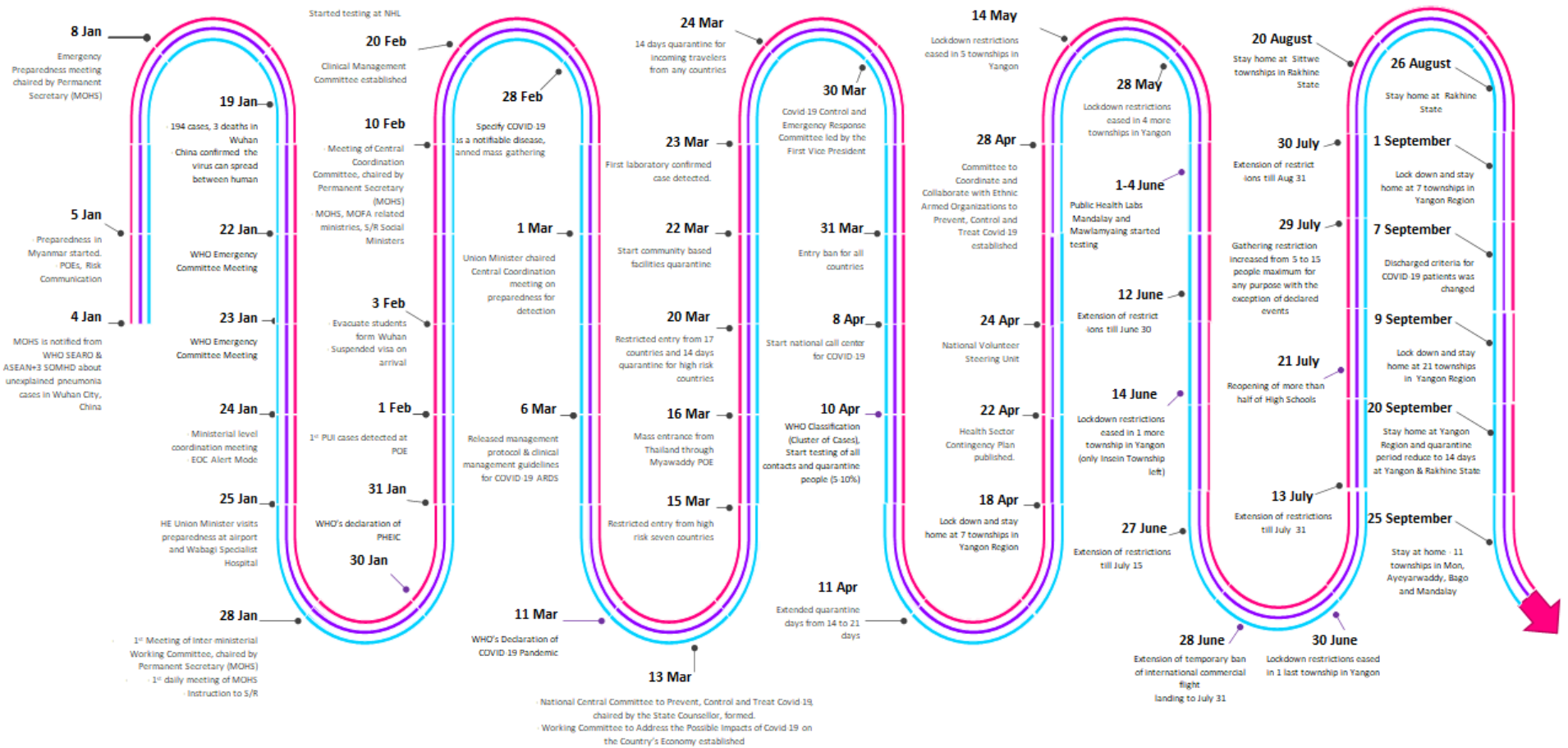
- Confirmed cases were detected as a peak in the 4th week after first confirmed cases due to the religious event cluster.
- Confirmed cases were decreased but still raised than the first 3 weeks due to the religious event cluster and workplace cluster.
- There were an increased in numbers of cases in the 7th week after the first two cases due to the household cluster linked with a religious cluster.
- Confirmed cases were detected by a nearly two-fold rise in the 9th and 10th weeks after the first two cases because of returnees coming back by relief flights.

Summary of new confirmed cases detection after first two cases (as of 2.10.2020)



- Confirmed cases were detected as a peak in the 4th week after first confirmed cases due to the religious event cluster.
- Confirmed cases were decreased but still raised than the first 3 weeks due to the religious event cluster and workplace cluster.
- There were an increased in numbers of cases in the 7th week after the first two cases due to the household cluster linked with a religious cluster.
- Confirmed cases were detected by a nearly two-fold rise in the 9th and 10th weeks after the first two cases because of returnees coming back by relief flights.

Timeline of Preparedness and Response to COVID-19 in Myanmar (as of 2.10.2020)



Hotline Number— 0673 420 268

Data source - CEU, DMS, NHL, PHL (MDY and MLM), DMR, DSGH, State and Region Health Departments