



# Ministry of Health and Sports (Myanmar)

## Department of Public Health

### Central Epidemiology Unit

(19 August 2020)

#### Coronavirus Disease 2019 (COVID-19)

Situation Report - 134

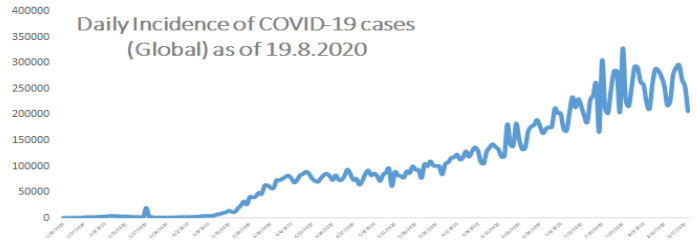
Data as reported by States and Regions by 6:00 AM MST 18 August 2020

**Global Situation (WHO situation report - 211) data as of 14:30 MST 18 August 2020**

**Confirmed cases**  
**21,756,357**

**Deaths**  
**771,635**

**Case Fatality Rate**  
**3.5 %**



#### Myanmar Situation

Total Tested

**139,514**

Confirmed Cases

**379**

Negative

**139,135**

Recovered

**333**

87.9% of Confirmed cases

Active

**40**

10.6% of Confirmed cases

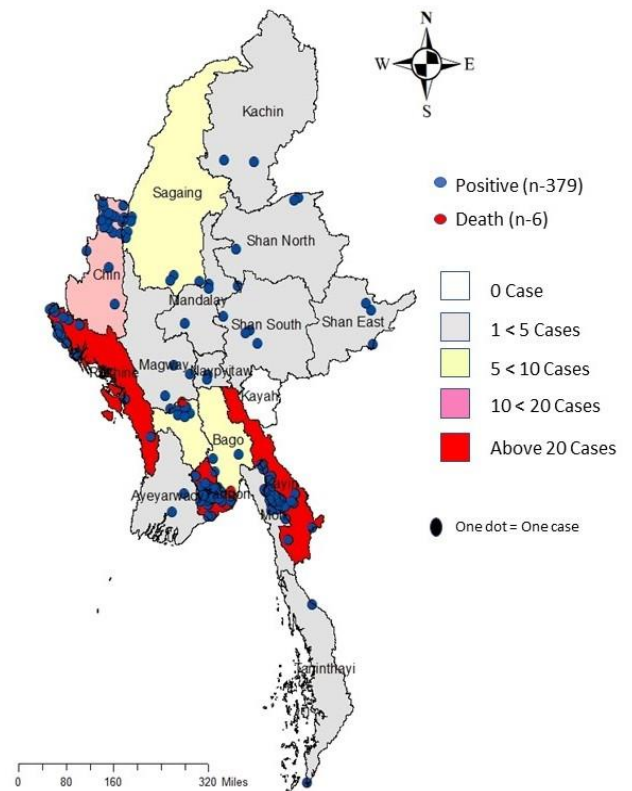
Death

**6**

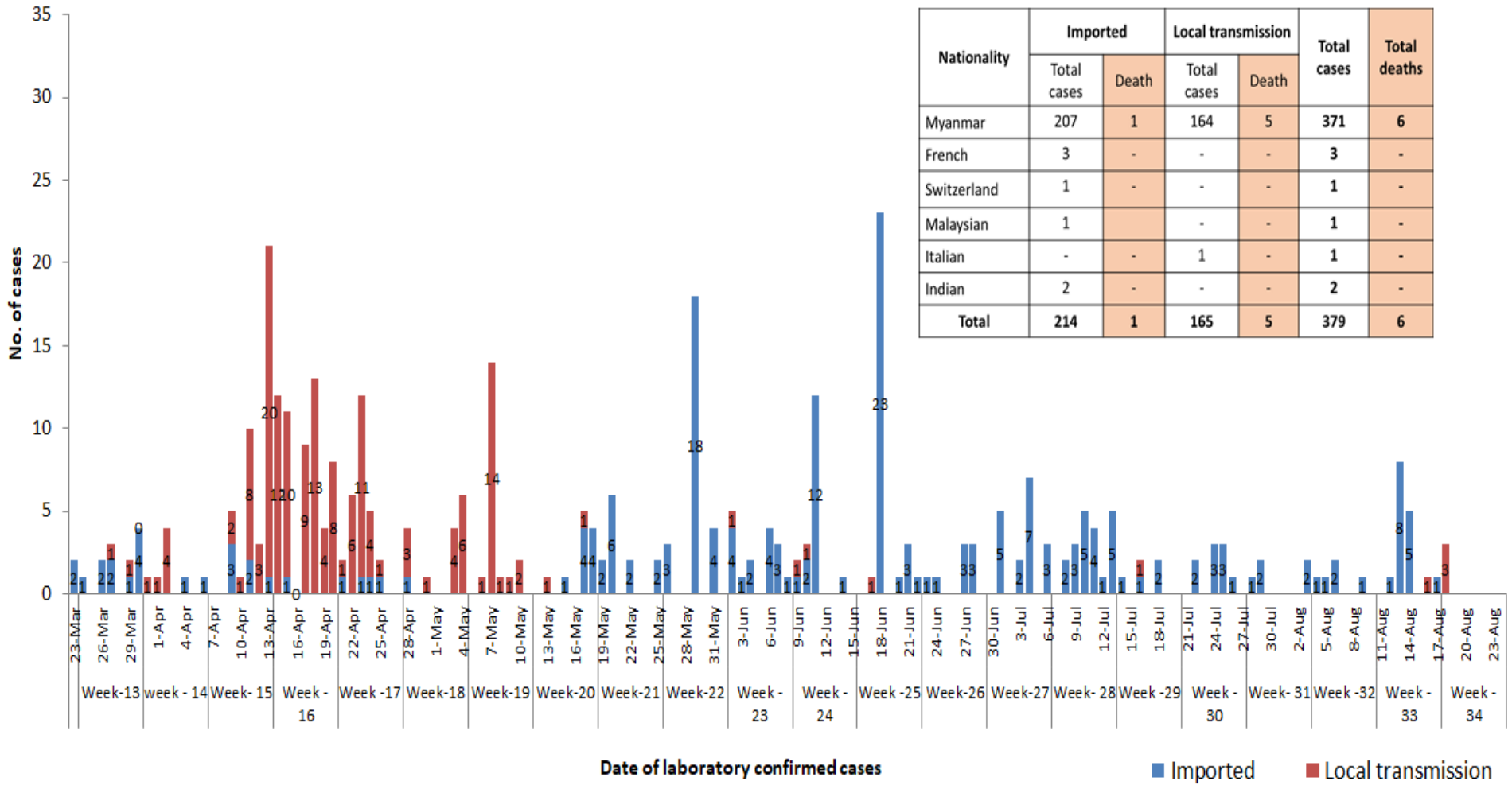
1.6% of Confirmed cases

No	State/Region	COVID –19 Confirmed case	Recovered	Deaths
1	Yangon	268	231(2 New)	5
2	Kayin	29	29	-
3	Rakhine	20(3 New)	16	-
4	Chin	17	3	-
5	Sagaing	9	9	-
6	Bago	9	8	1
7	Shan (South)	4	4	-
8	Mandalay	4	4	-
9	Shan (East)	3	3	-
10	Shan (North)	3	3	-
11	Magway	3	3	-
12	Naypyitaw	2	2	-
13	Ayeyarwaddy	2	2	-
14	Kachin	2	2	-
15	Mon	2	2	-
16	Thanintharyi	2	2	-
17	Kayah	-	-	-
<b>Total</b>		<b>379(3 New)</b>	<b>333(2 New)</b>	<b>6</b>

Map showing COVID-19 laboratory confirmed cases

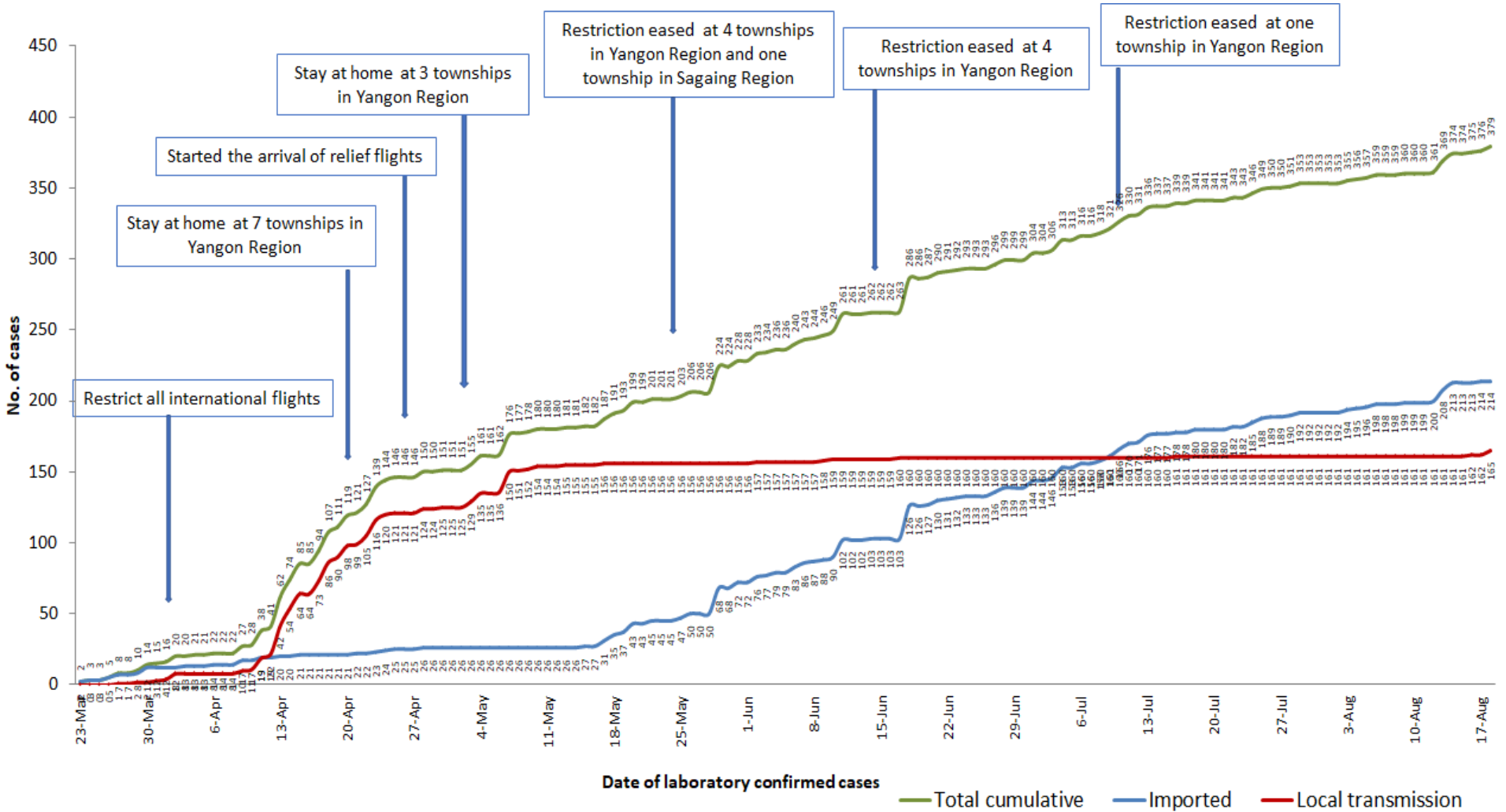


# COVID-19 confirmed cases by types of transmissions (as of 18.8.2020, 6:00 am) n=379

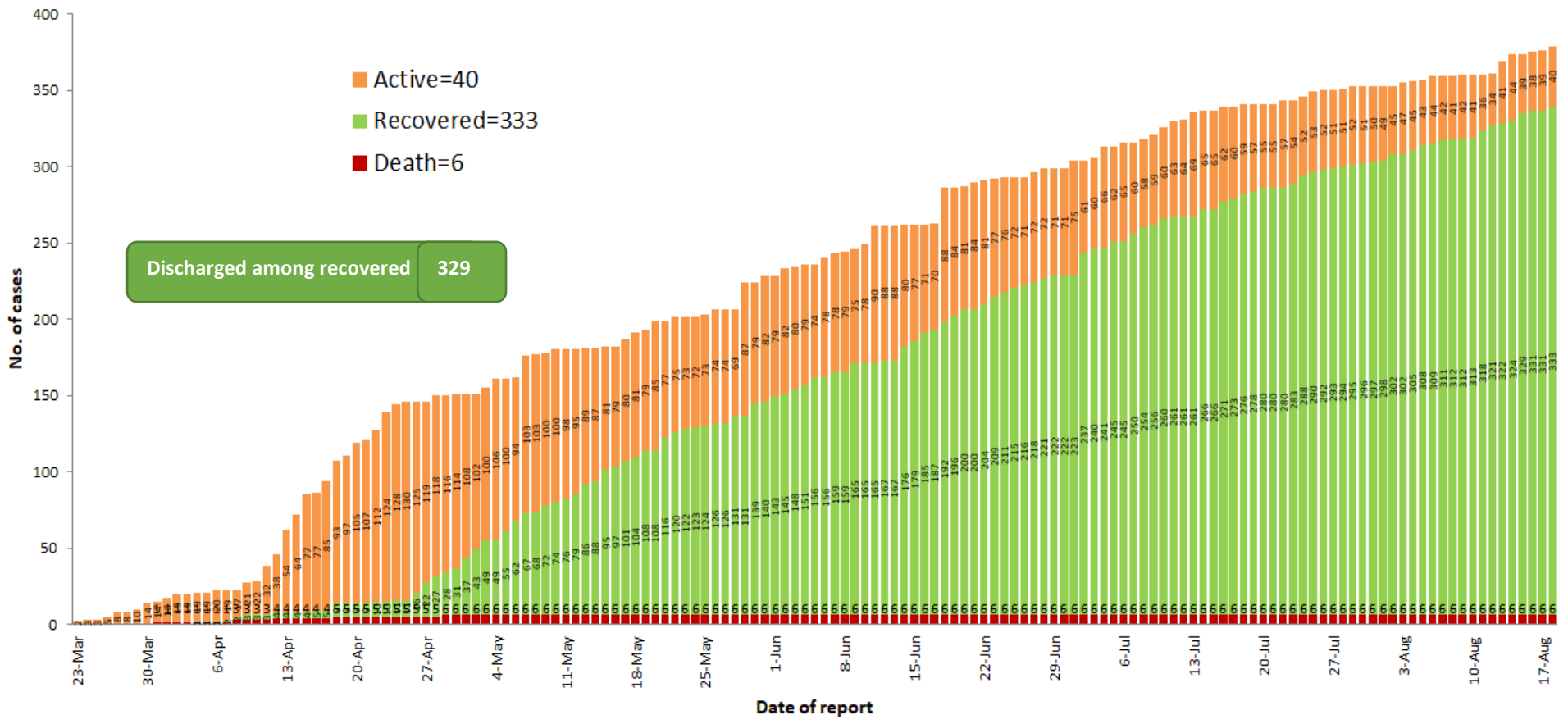


Nationality	Imported		Local transmission		Total cases	Total deaths
	Total cases	Death	Total cases	Death		
Myanmar	207	1	164	5	371	6
French	3	-	-	-	3	-
Switzerland	1	-	-	-	1	-
Malaysian	1	-	-	-	1	-
Italian	-	-	1	-	1	-
Indian	2	-	-	-	2	-
<b>Total</b>	<b>214</b>	<b>1</b>	<b>165</b>	<b>5</b>	<b>379</b>	<b>6</b>

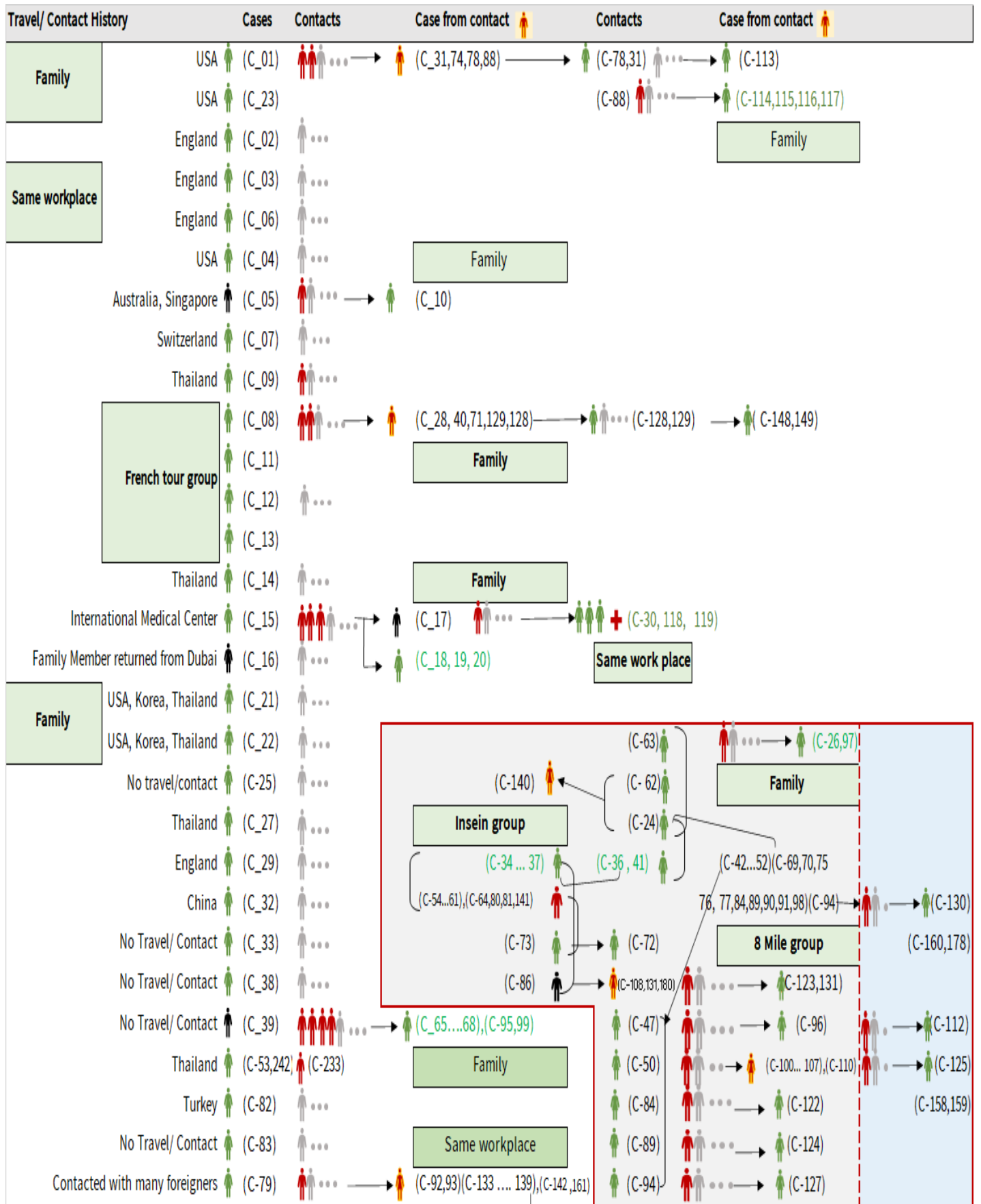
# Total laboratory confirmed cases by date (as of 18.8.2020, 6:00 am), n= 379



# Cumulative Number of active confirmed cases, recovered and deaths (23.3.2020 – 18.8.2020), n (cumulative)=379



# Summary of COVID-19 confirmed cases (as of 18.8.2020), n (contacts)= 5,939



# Summary of COVID-19 confirmed cases (as of 18.8.2020), n (contacts)= 5,939

Travel/ Contact History	Cases	Contacts	Case from contact	Contacts	Case from contact
No Travel/ Contact	(C-85)	...			(C-110)
No travel / Contact	(C-87)	...	(C-126)		(C-28,40,42,43,44,45,46,48,49,51,52)
No travel / Contact	(C-109)	...	(C-139)	(C-146)	(C-54,55,56,57,58,60,61,63,64,69,70)
No travel / Contact	(C-111)	...	(C-133,134,142)	(C-147)	(C-71,74,75,76,77,80,81,88,90,91,92,93)
No travel/Contact	(C-120)	...			(C-98,100,101,102,103,104,105,106,107,108)
England	(C-327,121,302,303,317)				(C-133,134,135,136,137,138,139,140,141,142)
No travel/Contact	(C-132)	...			(C-151,152,153,154,157,158,159,160,161)
Dubai/Thailand	(C-143)	...			(C-164,165,167,168,170,171,172,174)
No travel/Contact	(C-144)	...			(C-178,184,189,191,193,205,207,216,217,218)
India	(C-145,204,208,209,210,211,212,213,215,220,221,223,224,229,225,227,228,252,255,259,296)				(C-226,233,234,235,237,246,253,258,306,318)
China	(C-150,230)			Household	
Contact with religious event cluster	(C-162)	...	(C-151,152,153,154,157)	(C-165 .... 177)	(C-166,169,173,175,176,177)
No travel/contact	(C-155)	...	(C-163,164)	(C-177)	(C-179)
No travel/contact	(C-156)	...			
No travel/contact	(C-183)	...			
Malaysia	(C-184,189,273,280)		(C-182,185,186,191,188,190,187,200,201,232,275,282,351,353)		
UAE	(C-301,364,365,366,367,368,369,371)		C-193,192,194,195,196,197,198,199,300,301,314,315,316,337,340)		
Italy	(C-243,202)				
No travel/Contact	(C-231)				
Bangladesh	(C-234,244,247,250,262,310)		(C-244,245,247,248,250,262,291,292,293,308,309,325,326,334,348)		
No travel/contact	(C-245)	...			
No travel/contact	(C-249)	...			
No travel/contact	(C-263)	...			
Thailand	(C-333)	(C-264,265,266,267,268,269,270,271,272,273,274,276,277,278,279,280,281,283,284,285,286,287,294,304,312,332,335,336,338,346,349,352)			
Quata	(C-288)	(C-289,290,354,355)			
India	(C-205.....214,216...219,222.... 229,....241,246,253...258,260,295,297,298,307,322,323,324,345,357,358,359,361,372,373,374)				
Lao	(C-311)	...			
Singapore	(C-376)	(C-313)			
Philippines	(C-319)	(C-320,321,342,343)			
USA	(C-347,370)	(C-331,350,360)			
No travel/contact	(C-339)	...			
Sudan	(C-356)				
India	(C-203,240,251,254,256,328,329,330,261,299,305,341,344)				
Japan	(C-362,363)				
No travel/Contact	(C-375)	...	(C-378,379)		
No travel/Contact	(C-377)				

### Summary of current situation

Type	New (17.8.2020-18.8.2020)	Total (on 18.8.2020)
Suspected and Person Under Investigation (PUI)	19	116
Hospital Quarantine	10	43
Facility Quarantine	893	19,776

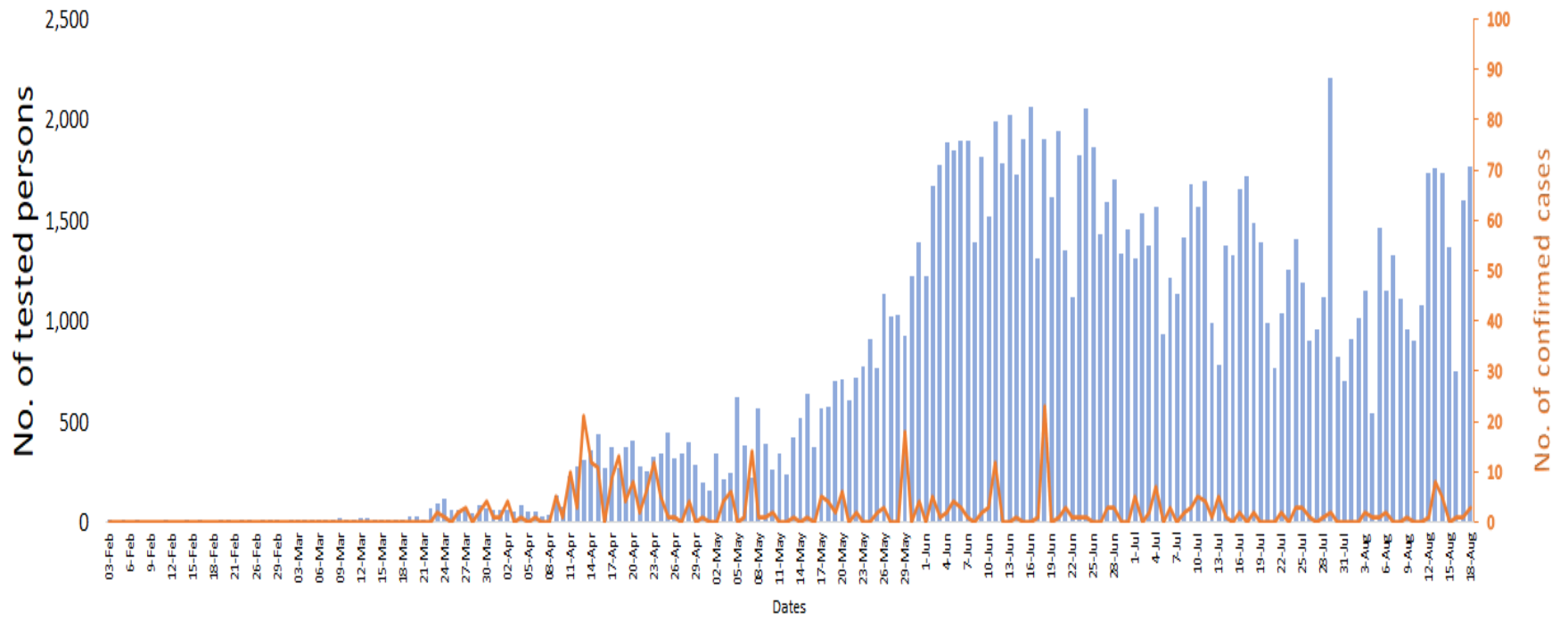
#### Person under Investigation (PUI) by State/Region hospitals (31.1.2020 – 18.8.2020) n= 7,117

No.	State/Region	PUI
1	Yangon	3545
2	Mandalay	1480
3	Kayin	340
4	Mon	289
5	Shan (N)	255
6	Magway	227
7	Bago	181
8	Shan (E)	130
9	Shan (S)	106
10	Ayeyarwaddy	104
11	Sagaing	90
12	Kayah	81
13	Thanintharyi	80
14	Rakhine	71
15	Naypyitaw	65
16	Kachin	43
17	Chin	30
<b>Total</b>		7,117

#### No. of Facility Quarantine sites and Quarantined people on 18.8.2020

No.	State/Region	No. of facilities	Total no. of quarantine
1	Yangon	67	4549
2	Mon	254	2699
3	Kayin	385	2455
4	Bago	187	2447
5	Tanintharyi	189	1648
6	Magway	407	1216
7	Mandalay	69	977
8	Sagaing	168	905
9	Rakhine	215	663
10	Shan South	80	611
11	Ayeyarwaddy	73	542
12	Kachin	93	447
13	Naypyitaw	3	314
14	Shan North	265	110
15	Kayah	18	88
16	Chin	18	58
17	Shan East	7	47
<b>Total</b>		2,498	19,776

## COVID-19 confirmed cases among tested by date (as of 18.8.2020)



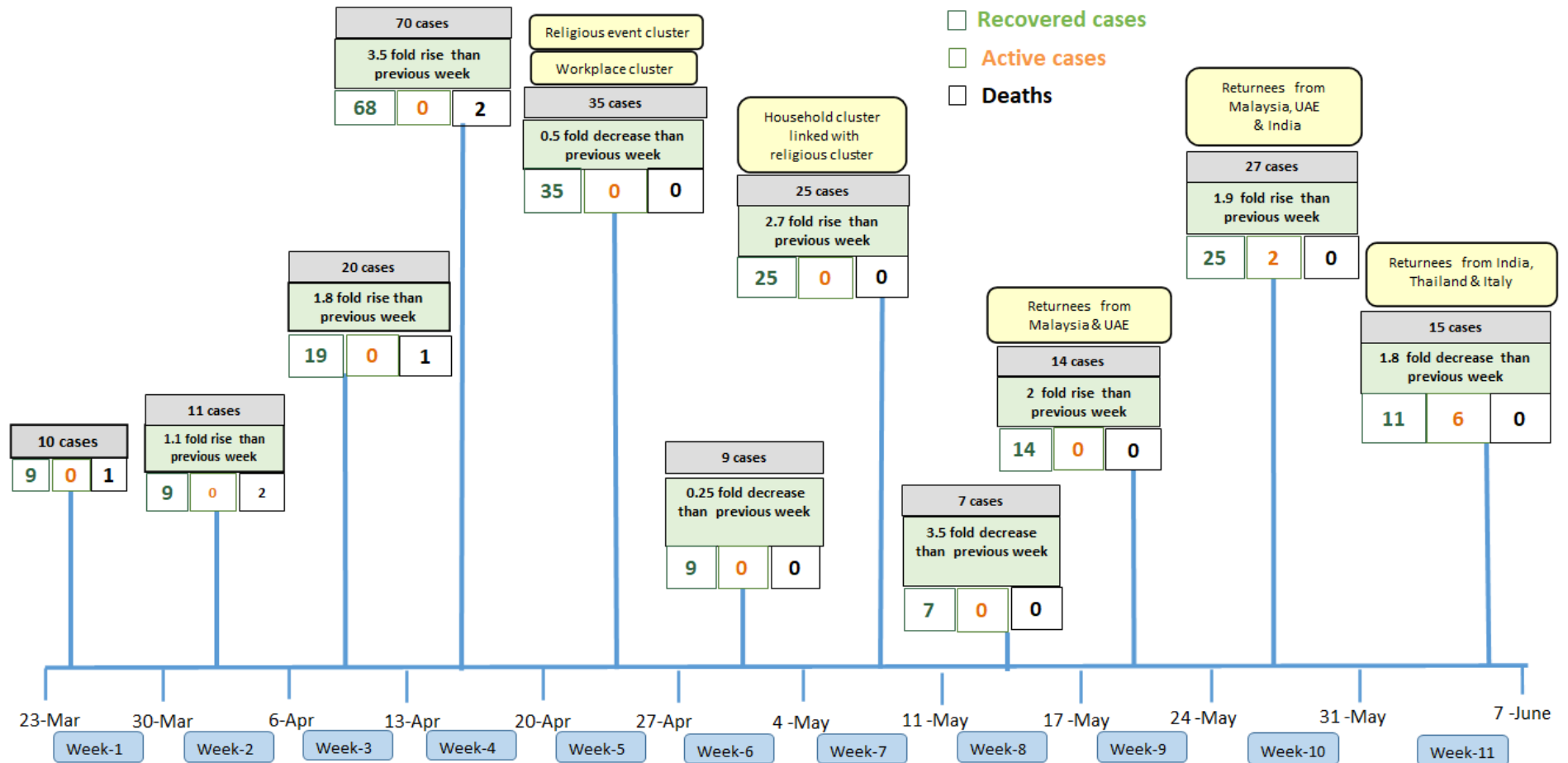
Total tested persons - 139,514

Total confirmed cases - 379

Tested person Confirmed case

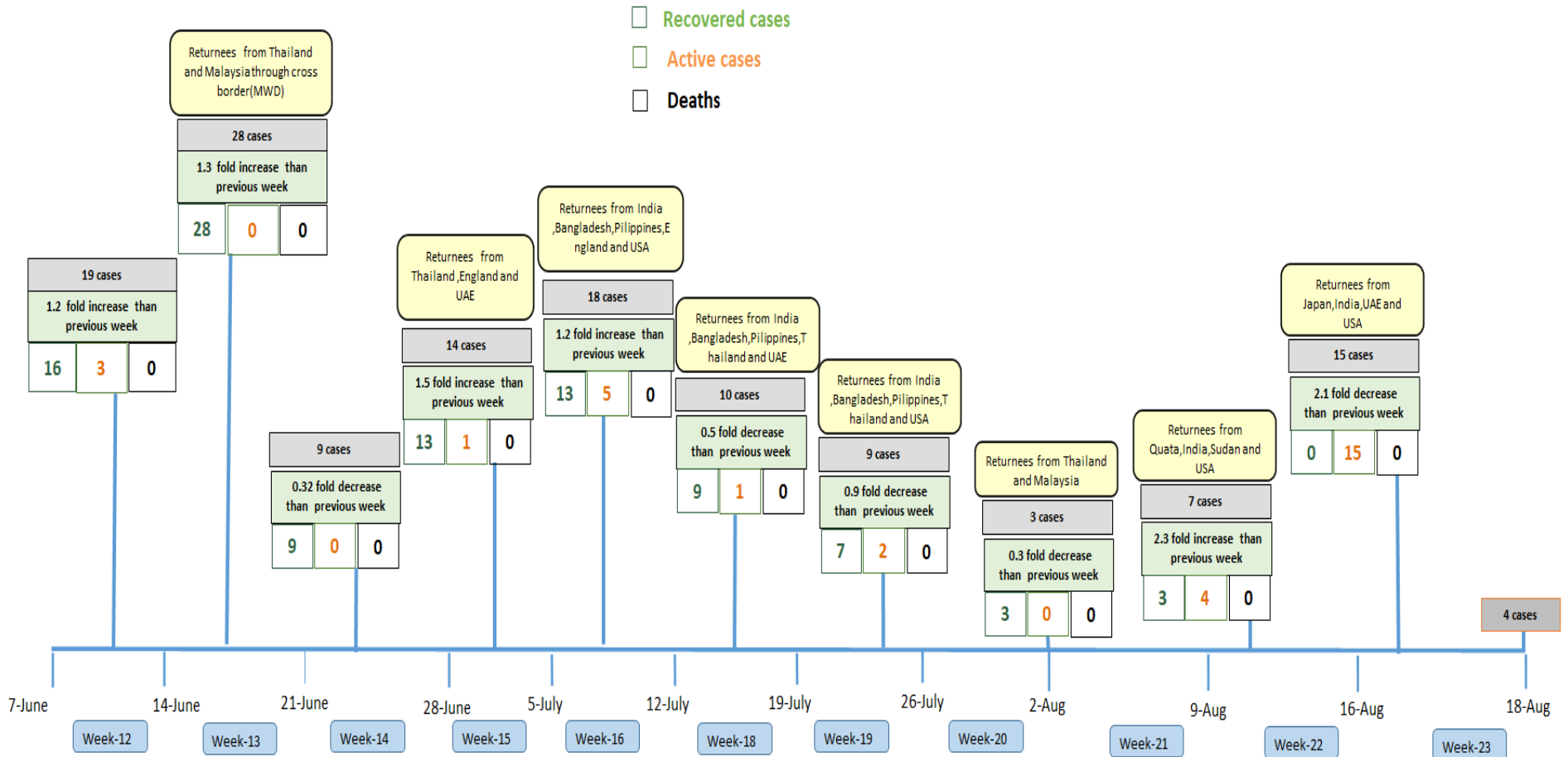


## Summary of new confirmed cases detection after first two cases (as of 18.8.2020)



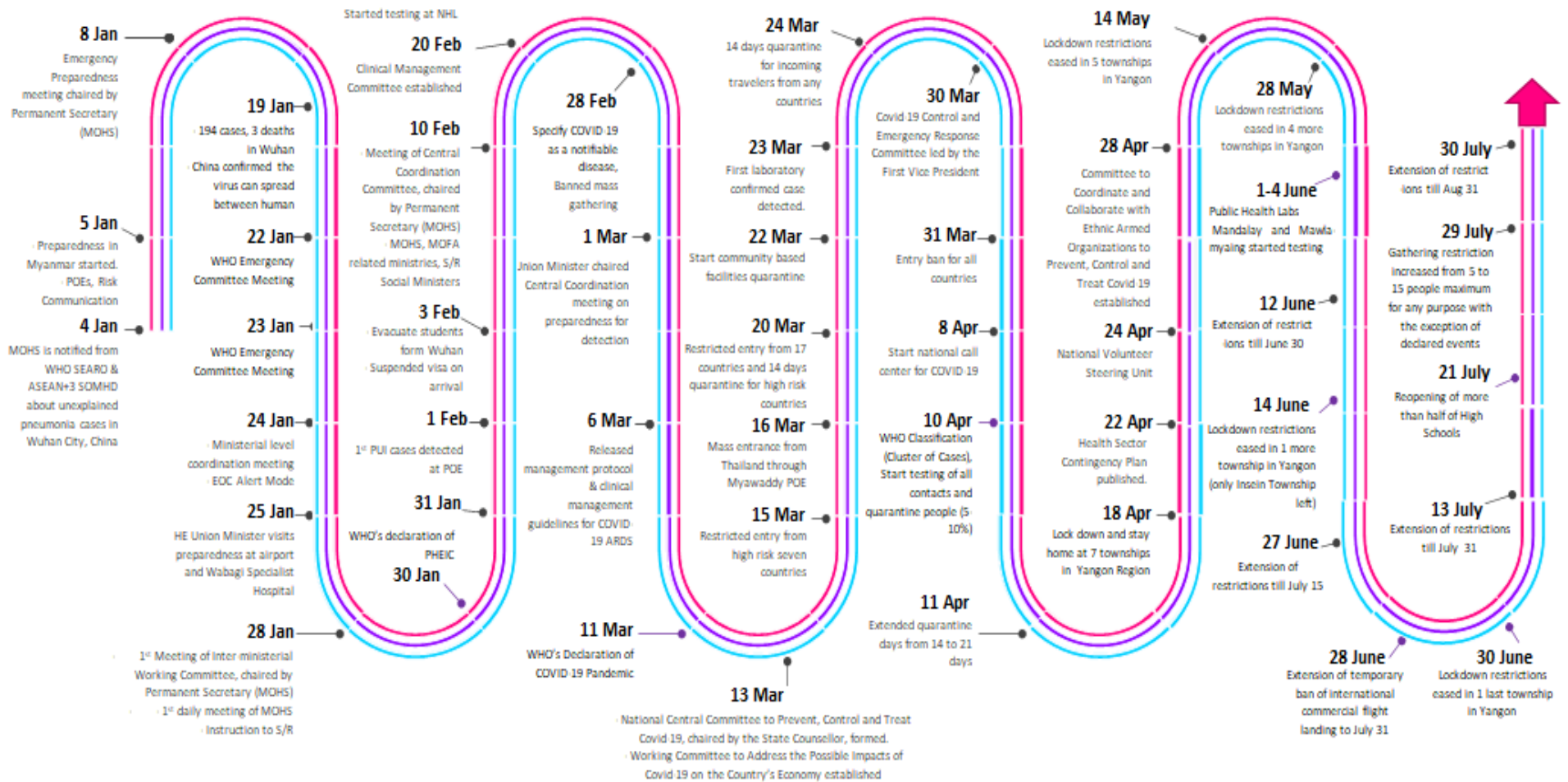
- Confirmed cases were detected as a peak in the 4th week after first confirmed cases due to the religious event cluster.
- Confirmed cases were decreased but still raised than the first 3 weeks due to the religious event cluster and workplace cluster.
- There were an increased in numbers of cases in the 7th week after the first two cases due to the household cluster linked with a religious cluster.
- Confirmed cases were detected by a nearly two-fold rise in the 9th and 10th weeks after the first two cases because of returnees coming back by relief flights.

# Summary of new confirmed cases detection after first two cases (as of 18.8.2020)



- Confirmed cases were detected as a peak in the 4th week after first confirmed cases due to the religious event cluster.
- Confirmed cases were decreased but still raised than the first 3 weeks due to the religious event cluster and workplace cluster.
- There were an increased in numbers of cases in the 7th week after the first two cases due to the household cluster linked with a religious cluster.
- Confirmed cases were detected by a nearly two-fold rise in the 9th and 10th weeks after the first two cases because of returnees coming back by relief flights.

# Timeline of Preparedness and Response to COVID-19 in Myanmar (as of 18.8.2020)



Hotline Number — 0673 420 268

Data source - CEU, DMS, NHL, PHL (MDY and MLM), DMR, DSGH, State and Region Health Departments