



Ministry of Health and Sports (Myanmar)

Department of Public Health

Central Epidemiology Unit

(11 August 2020)

Coronavirus Disease 2019 (COVID-19)

Situation Report - 126

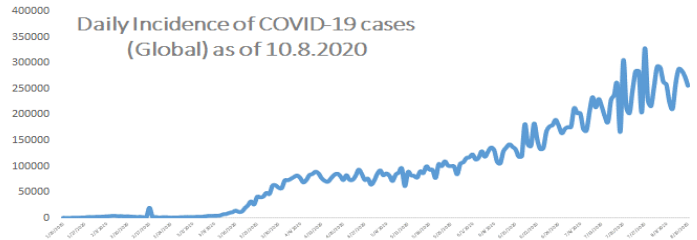
Data as reported by States and Regions by 10:00 PM MST 10 August 2020

Global Situation (WHO situation report - 203) data as of 14:30 MST 10 August 2020

Confirmed cases
19,718,030

Deaths
728,013

Case Fatality Rate
3.7 %



Myanmar Situation

Total Tested

127,726

Confirmed Cases

360

Negative

127,366

Recovered

313

86.9% of Confirmed cases

Active

41

11.4% of Confirmed cases

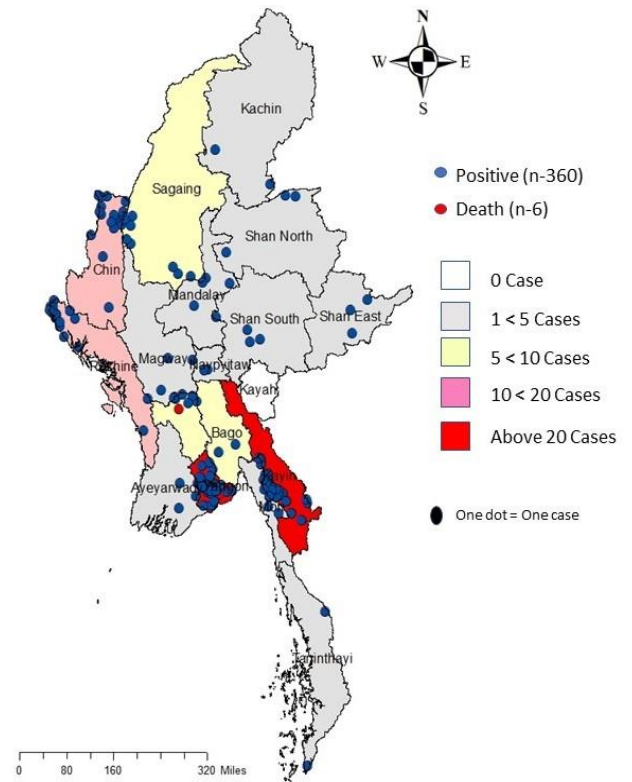
Death

6

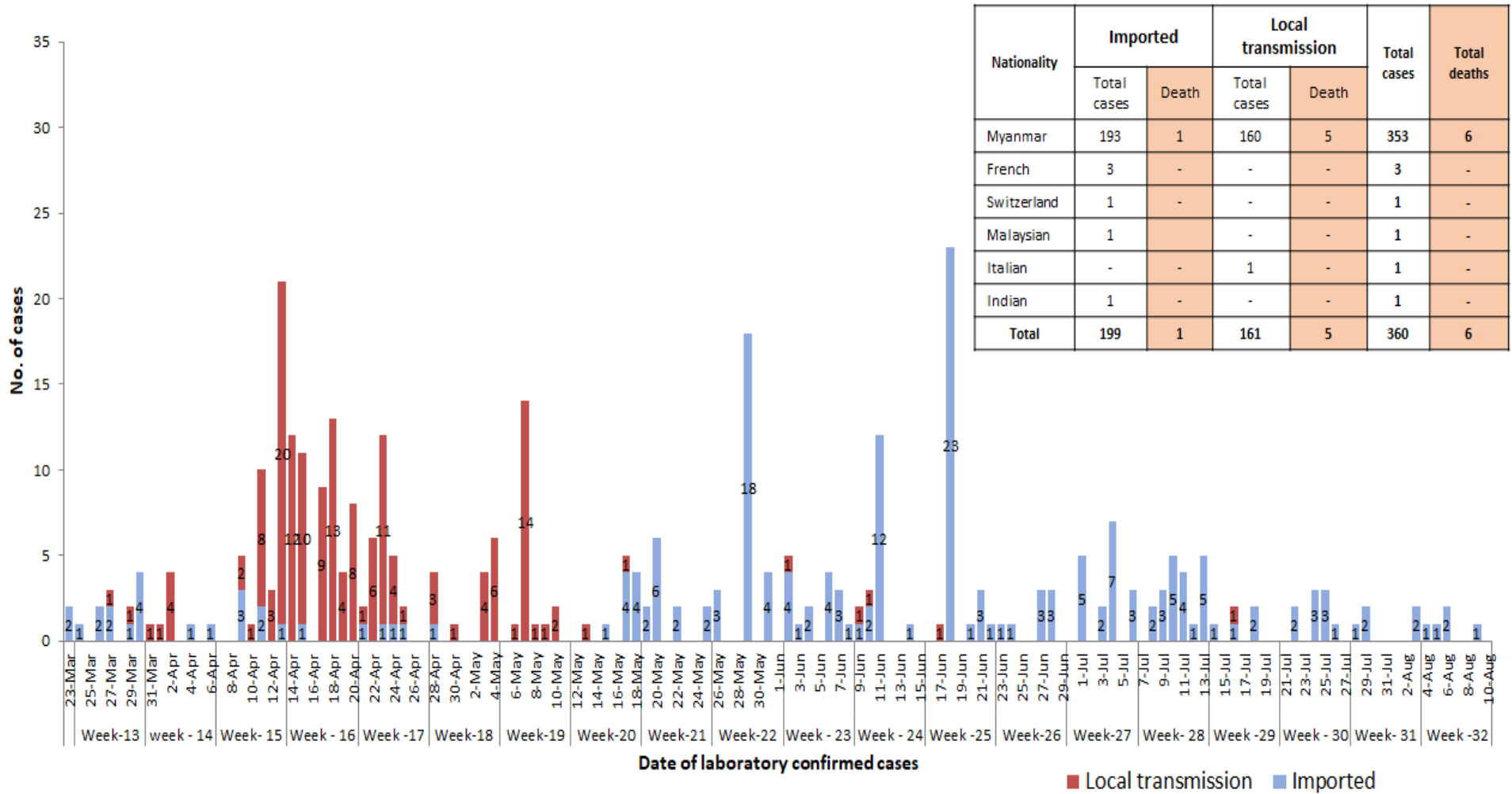
1.7% of Confirmed cases

No	State/Region	COVID-19 Confirmed case	Recovered	Deaths
1	Yangon	253	217(1 New)	5
2	Kayin	29	26	-
3	Chin	17	11	-
4	Rakhine	16	16	-
5	Sagaing	9	9	-
6	Bago	9	8	1
7	Shan (South)	4	4	-
8	Mandalay	4	4	-
9	Shan (East)	3	3	-
10	Shan (North)	3	3	-
11	Magway	3	3	-
12	Naypyitaw	2	2	-
13	Ayeyarwaddy	2	2	-
14	Kachin	2	2	-
15	Mon	2	2	-
16	Thanintharyi	2	1	-
17	Kayah	-	-	-
Total		360	313(1 New)	6

Map showing COVID-19 laboratory confirmed cases

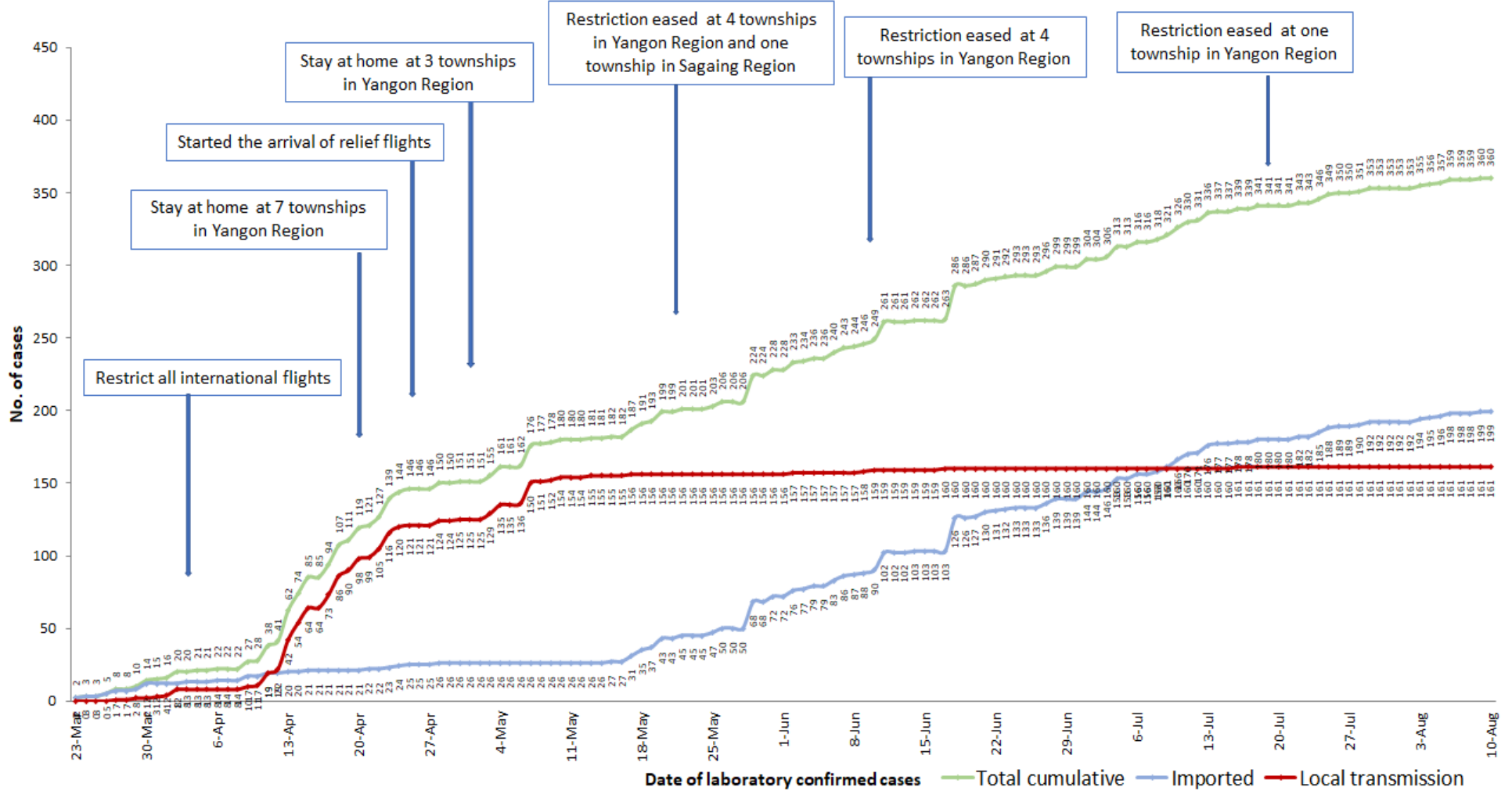


COVID-19 confirmed cases by types of transmissions (as of 10.8.2020, 10:00 pm) n=360

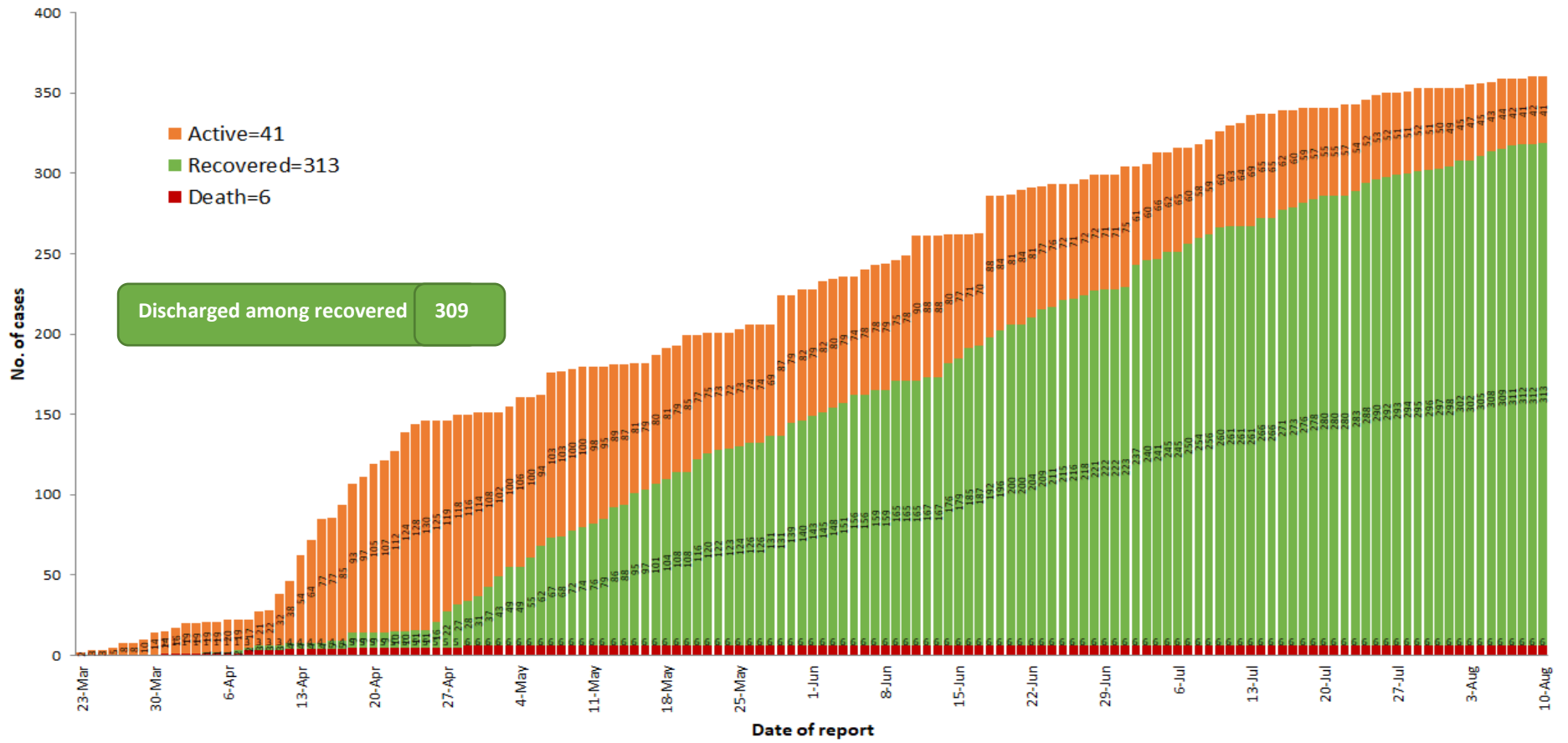


Nationality	Imported		Local transmission		Total cases	Total deaths
	Total cases	Death	Total cases	Death		
Myanmar	193	1	160	5	353	6
French	3	-	-	-	3	-
Switzerland	1	-	-	-	1	-
Malaysian	1	-	-	-	1	-
Italian	-	-	1	-	1	-
Indian	1	-	-	-	1	-
Total	199	1	161	5	360	6

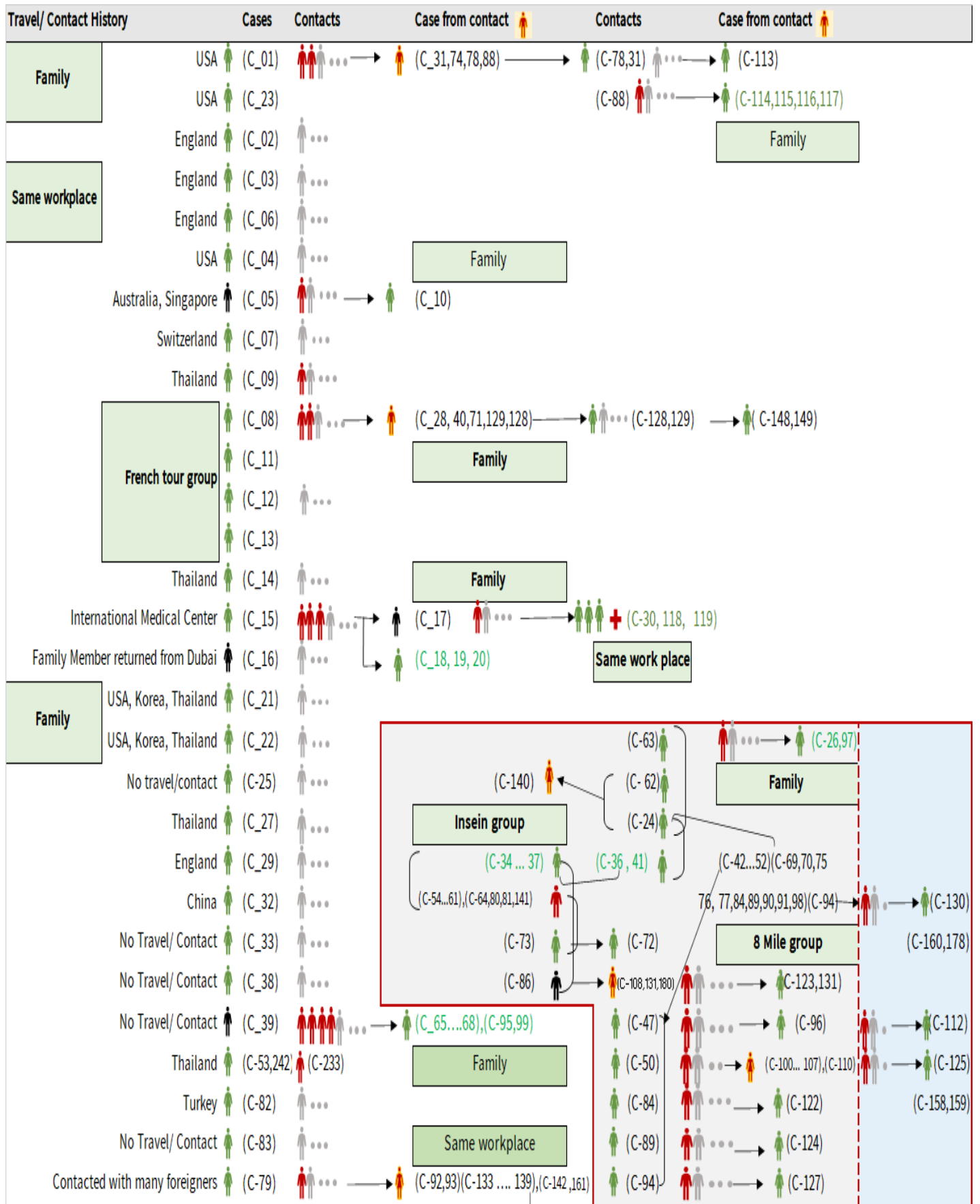
Total laboratory confirmed cases by date (as of 10.8.2020, 10:00 pm), n= 360



Cumulative Number of active confirmed cases, recovered and deaths (23.3.2020 – 10.8.2020), n (cumulative)=360



Summary of COVID-19 confirmed cases (as of 10.8.2020), n (contacts)= 5,789



Summary of COVID-19 confirmed cases (as of 10.8.2020), n (contacts)= 5,789

Travel/ Contact History	Cases	Contacts	Case from contact	Contacts	Case from contact
No Travel/ Contact	(C-85)	...			(C-110)
No travel / Contact	(C-87)	...	(C-126)		(C-28,40,42,43,44,45,46,48,49,51,52)
No travel / Contact	(C-109)	...	(C-139)	(C-146)	(C-54,55,56,57,58,60,61,63,64,69,70)
No travel / Contact	(C-111)	...	(C-133,134,142)	(C-147)	(C-71,74,75,76,77,80,81,88,90,91,92,93)
No travel/Contact	(C- 120)	...			(C-98,100,101,102,103,104,105,106,107,108)
England	(C-327,121,302,303,317)				(C- 133,134,135,136,137,138,139,140,141,142)
No travel/Contact	(C-132)	...			(C-151,152,153,154,157,158,159,160,161)
Dubai/Thailand	(C-143)	...			(C-164,165,167,168,170,171,172,174)
No travel/Contact	(C-144)	...			(C-178,184,189,191,193,205,207,216,217,218)
India	(C- 145,204,208,209,210,211,212,213,215,220,221,223,224,229,225,227,228,252,255,259,296,299,3				(C-226,233,234,235,237,246,253,258,306,318)
China	(C-150,230)			Household	
Contact with religious event cluster	(C- 162)	...	(C-151,152,153,154,157)	(C-165 ... 177)	(C-166,169,173,175,176,177)
No travel/contact	(C-155)	...	(C-163,164)	(C-177)	(C-179)
No travel/contact	(C-156)	...			(C-181)
No travel/contact	(C- 183)	...			
Malaysia	(C-184,189,273,280,351,353)		(C-182,185,186,191,188,190,187,200,201,232,275,282)		
UAE	(C-301,315,316,337)		(C-193,192,194,195,196,197,198,199,300,301,314,340)		
Italy	(C-243,202)				
No travel/Contact	(C- 231)				
Bangladesh	(C-234,244,247,250,262,309,310,334)		(C-244,245,247,248,250,262,291,292,293,308,325,326,348)		
No travel/contact	(C-245)	...			
No travel/contact	(C-249)				
No travel/contact	(C-263)	...			
Thailand	(C-332,333,335,346,349,352)		(C-264,265,266,267,268,269,270,271,272,273,274,276,277,278,279,280,281,283,284,285,286,287,294,304,312,336,338)		
Quata	(C-288,354,355)		(C-289,290)		
India	(C-205.....214,216...219,222.... 229,....241,246,253....258,260,261,295,297,298,307,322,323,324,344,345,357,358,359)		(C-203,240,251,254,256,328,3		
Lao	(C-311)	...			
Singapore	(C-313)	...			
Philippines	(C-319,321)	(C-320,342,343)			
USA	(C-347)	(C-331,350,360)			
No travel/contact	(C-339)	...			
Sudan	(C-356)				

Summary of current situation

Type	New (9.8.2020-10.8.2020)	Total (on 10.8.2020)
Suspected and Person Under Investigation (PUI)	14	122
Hospital Quarantine	6	35
Facility Quarantine	1,150	19,870

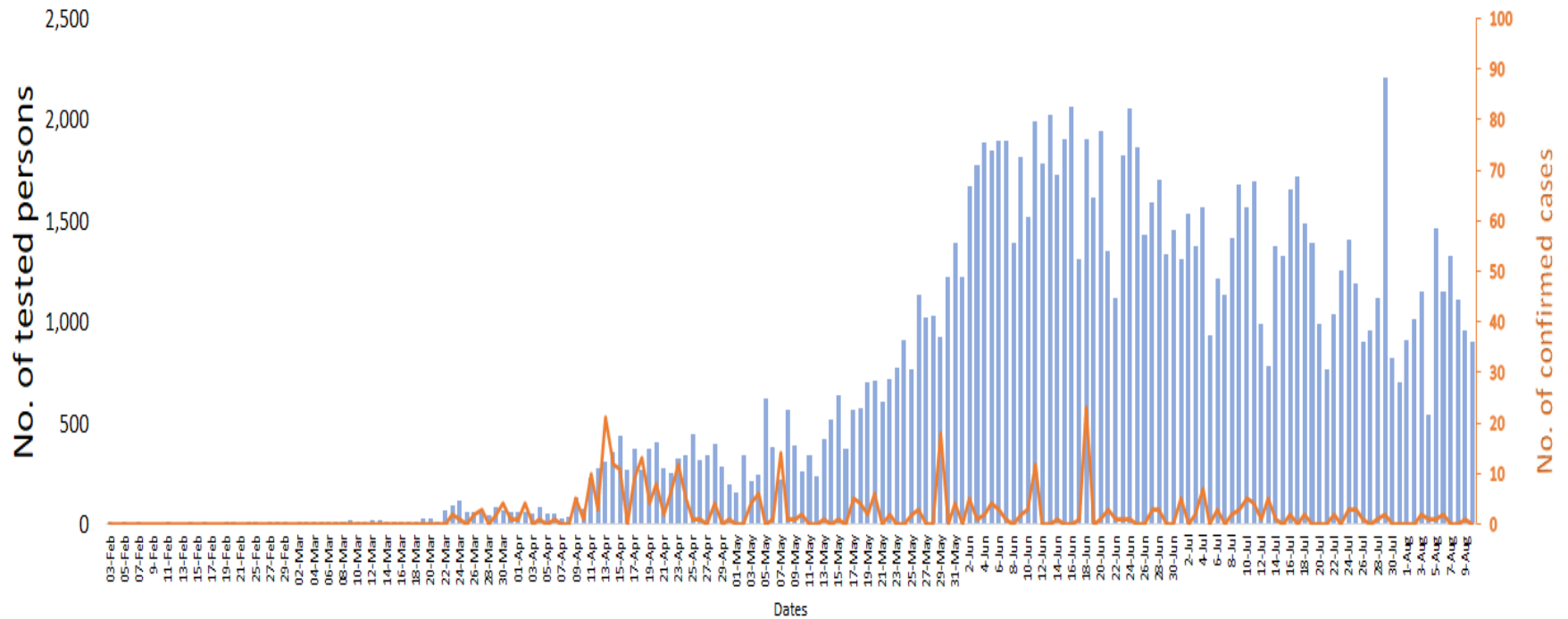
Person under Investigation (PUI) by State/Region hospitals (31.1.2020 – 10.8.2020) n= 6,969

No.	State/Region	PUI
1	Yangon	3477
2	Mandalay	1448
3	Kayin	319
4	Mon	286
5	Shan (N)	249
6	Magway	222
7	Bago	181
8	Shan (E)	127
9	Shan (S)	104
10	Ayeyarwaddy	102
11	Sagaing	90
12	Kayah	81
13	Thanintharyi	76
14	Rakhine	69
15	Naypyitaw	65
16	Kachin	43
17	Chin	30
Total		6,969

No. of Facility Quarantine sites and Quarantined people on 10.8.2020

No.	State/Region	No. of facilities	Total no. of quarantine
1	Yangon	63	4071
2	Mon	251	2780
3	Bago	196	2639
4	Kayin	364	2505
5	Tanintharyi	189	1722
6	Magway	407	1216
7	Sagaing	168	983
8	Mandalay	60	963
9	Rakhine	236	673
10	Ayeyarwaddy	150	645
11	Shan South	85	582
12	Kachin	111	467
13	Naypyitaw	2	322
14	Shan North	268	96
15	Kayah	18	91
16	Chin	19	68
17	Shan East	7	47
Total		2,594	19,870

COVID-19 confirmed cases among tested by date (as of 10.8.2020)

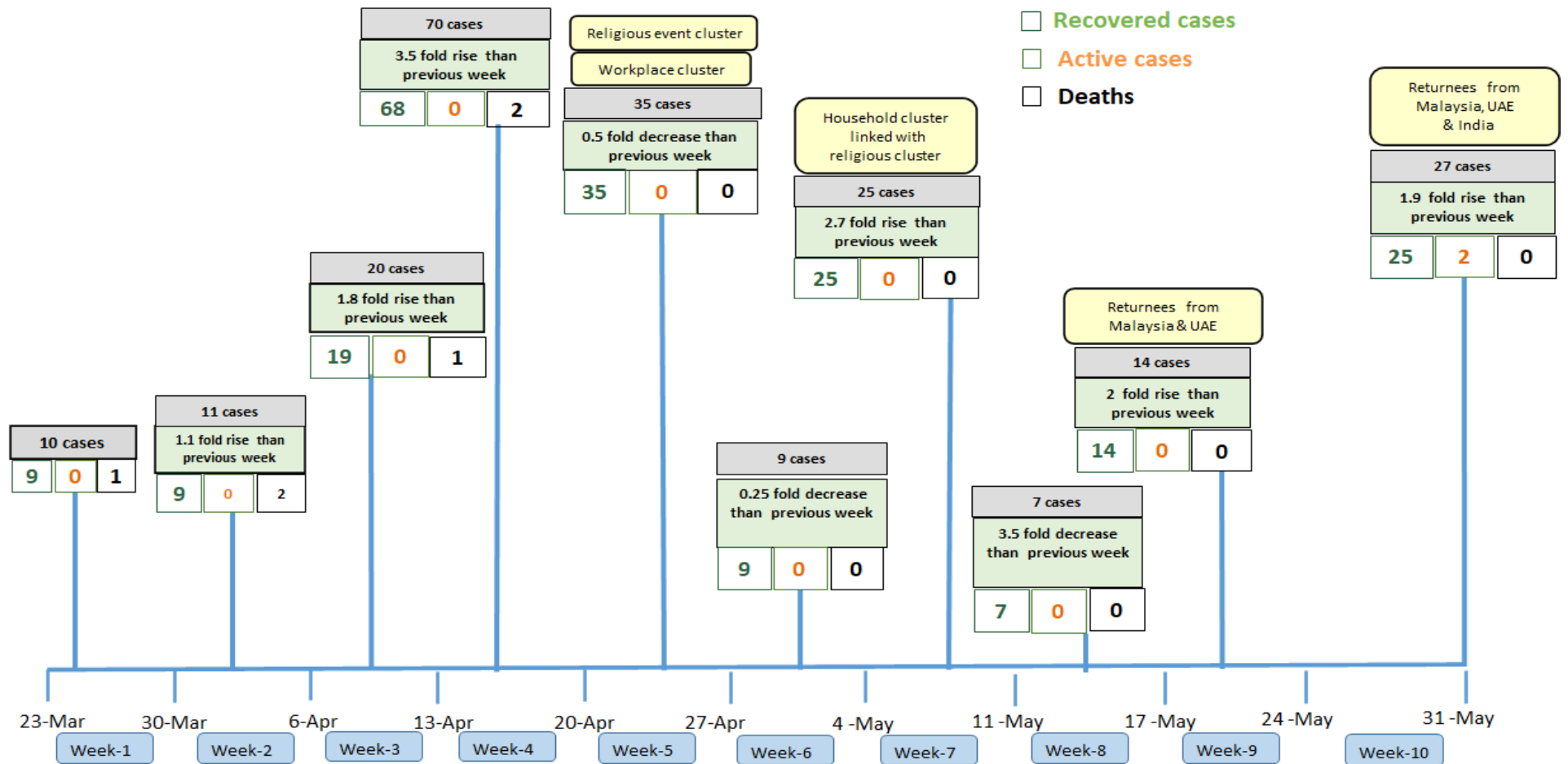


Total tested persons - 127,726

Total confirmed cases - 360

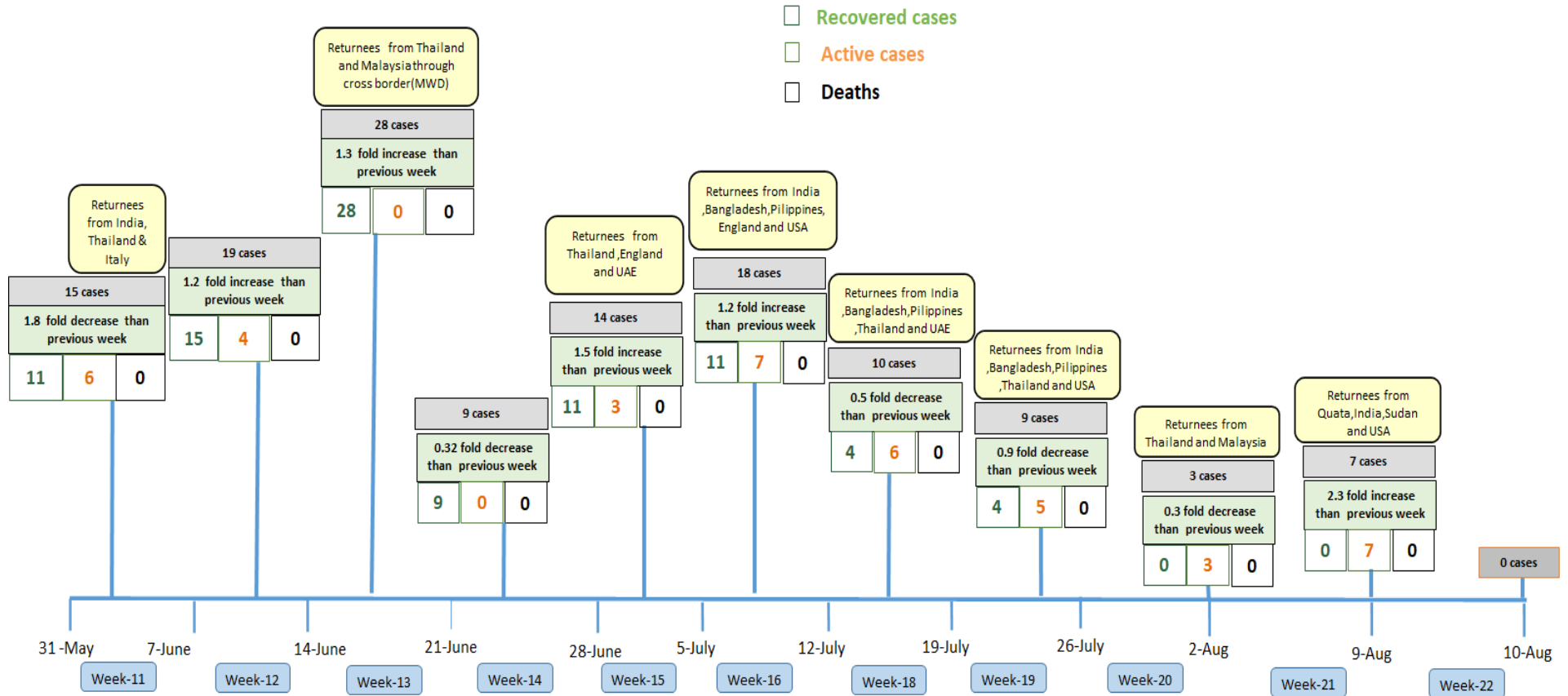
■ Tested person — Confirmed case

Summary of new confirmed cases detection after first two cases (as of 10.8.2020)



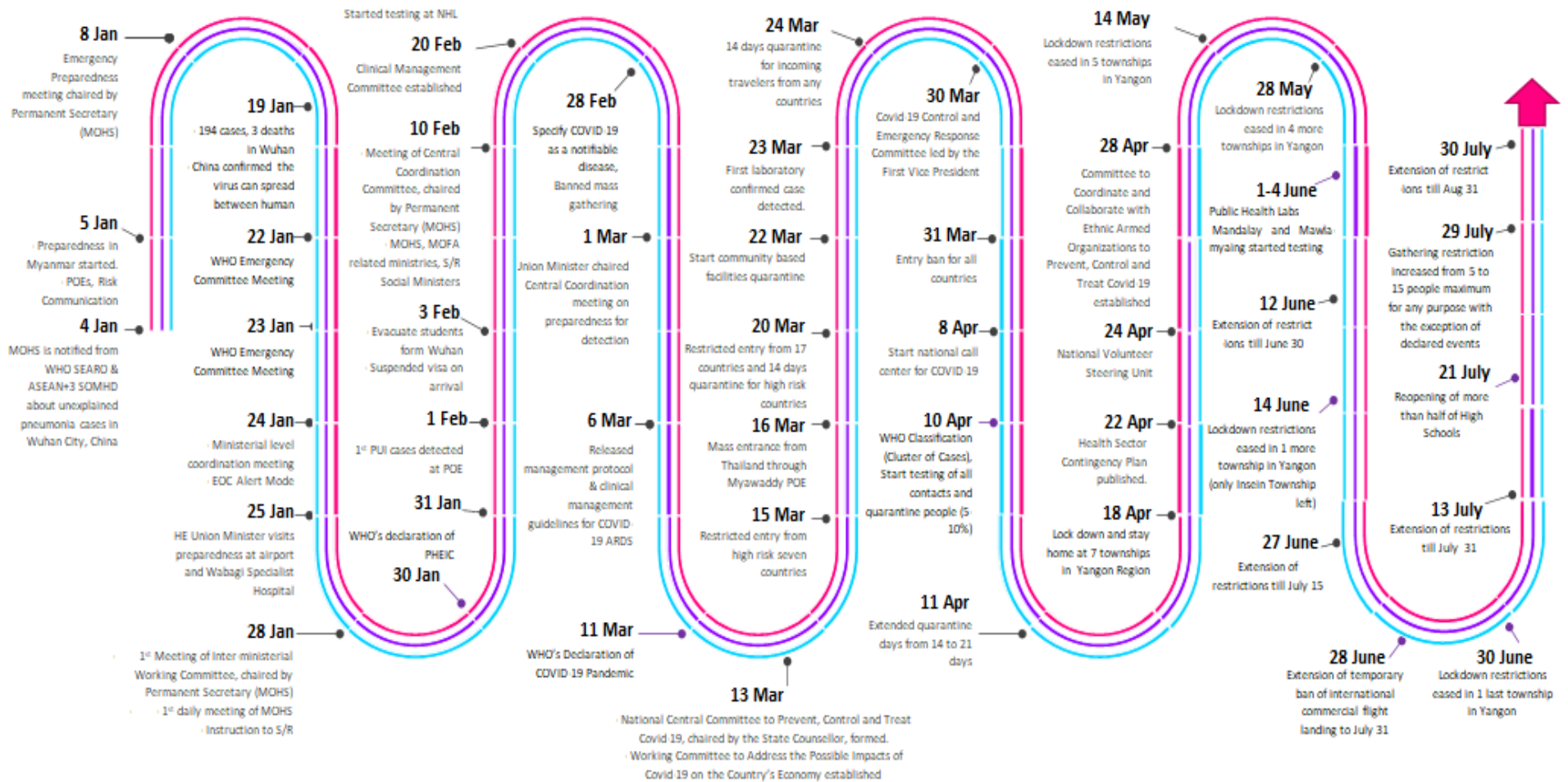
- Confirmed cases were detected as a peak in the 4th week after first confirmed cases due to the religious event cluster.
- Confirmed cases were decreased but still raised than the first 3 weeks due to the religious event cluster and workplace cluster.
- There were an increased in numbers of cases in the 7th week after the first two cases due to the household cluster linked with a religious cluster.
- Confirmed cases were detected by a nearly two-fold rise in the 9th and 10th weeks after the first two cases because of returnees coming back by relief flights.

Summary of new confirmed cases detection after first two cases (as of 10.8.2020)



- Confirmed cases were detected as a peak in the 4th week after first confirmed cases due to the religious event cluster.
- Confirmed cases were decreased but still raised than the first 3 weeks due to the religious event cluster and workplace cluster.
- There were an increased in numbers of cases in the 7th week after the first two cases due to the household cluster linked with a religious cluster.
- Confirmed cases were detected by a nearly two-fold rise in the 9th and 10th weeks after the first two cases because of returnees coming back by relief flights.

Timeline of Preparedness and Response to COVID-19 in Myanmar (as of 10.8.2020)



Hotline Number — 0673 420 268

Data source - CEU, DMS, NHL, PHL (MDY and MLM), DMR, DSGH, State and Region Health Departments