



# Ministry of Health and Sports (Myanmar)

## Department of Public Health

### Central Epidemiology Unit

(3 August 2020)

#### Coronavirus Disease 2019 (COVID-19)

Situation Report - 118

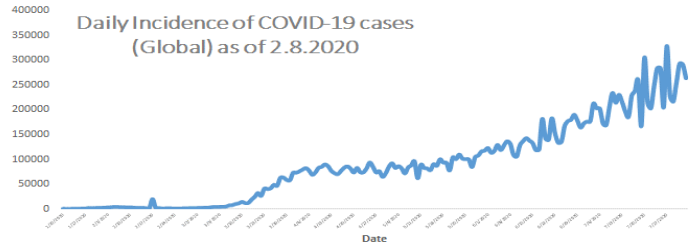
Data as reported by States and Regions by 10:00 PM MST 2 August 2020

Global Situation (WHO situation report - 195) data as of 14:30 MST 2 August 2020

**Confirmed cases**  
**17,660,523**

**Deaths**  
**680,894**

**Case Fatality Rate**  
**3.8 %**



#### Myanmar Situation

Total Tested

**119,142**

Confirmed Cases

**353**

Negative

**118,789**

Recovered

**302**

85.5% of Confirmed cases

Active

**45**

12.7% of Confirmed cases

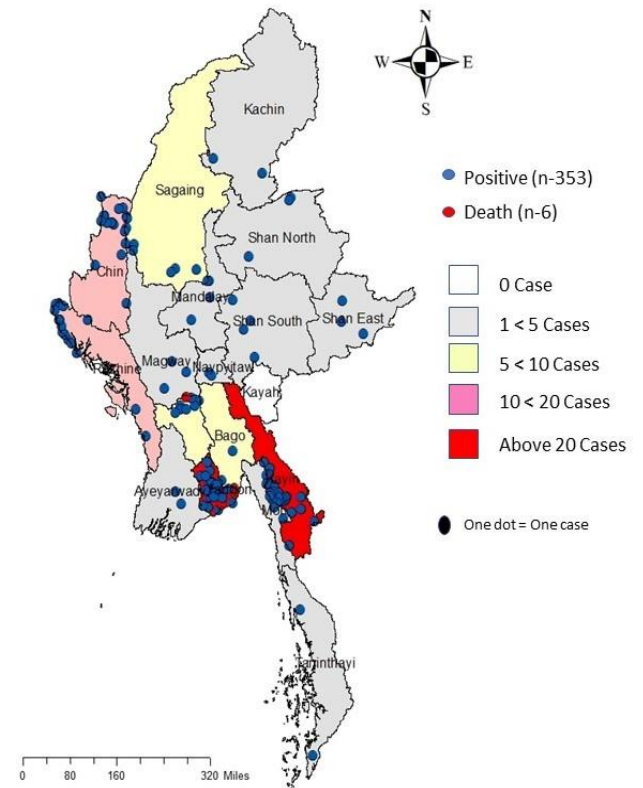
Death

**6**

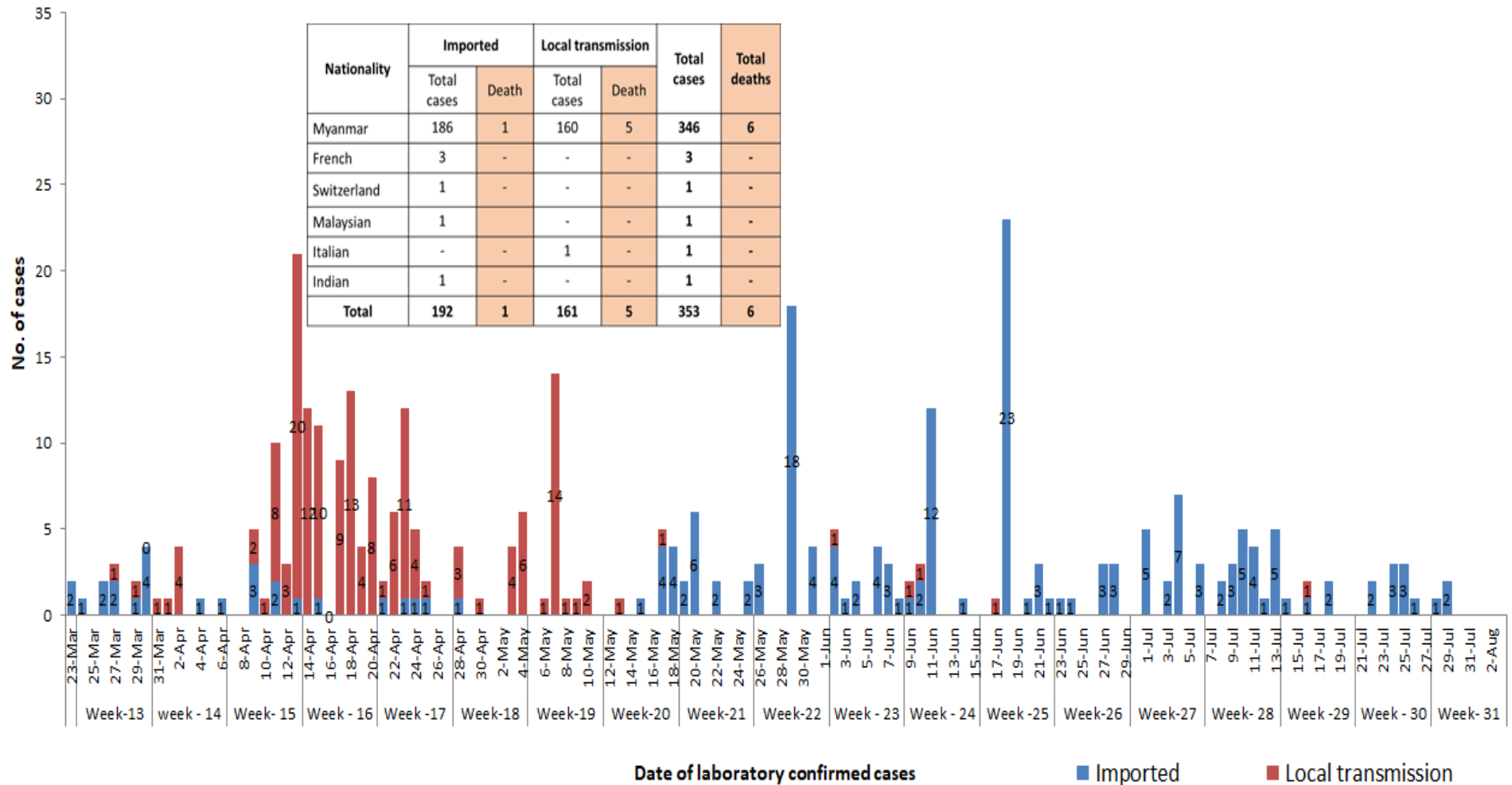
1.7% of Confirmed cases

No	State/Region	COVID –19 Confirmed case	Recovered	Deaths
1	Yangon	249	207(1 New)	5
2	Kayin	29	25(1 New)	-
3	Rakhine	16	16(2 New)	-
4	Chin	14	11	-
5	Sagaing	9	9	-
6	Bago	9	8	1
7	Shan (South)	4	4	-
8	Mandalay	4	4	-
9	Shan (East)	3	3	-
10	Shan (North)	3	3	-
11	Magway	3	3	-
12	Naypyitaw	2	2	-
13	Ayeyarwaddy	2	2	-
14	Kachin	2	2	-
15	Mon	2	2	-
16	Thanintharyi	2	1	-
17	Kayah	-	-	-
<b>Total</b>		<b>353</b>	<b>302(4 New)</b>	<b>6</b>

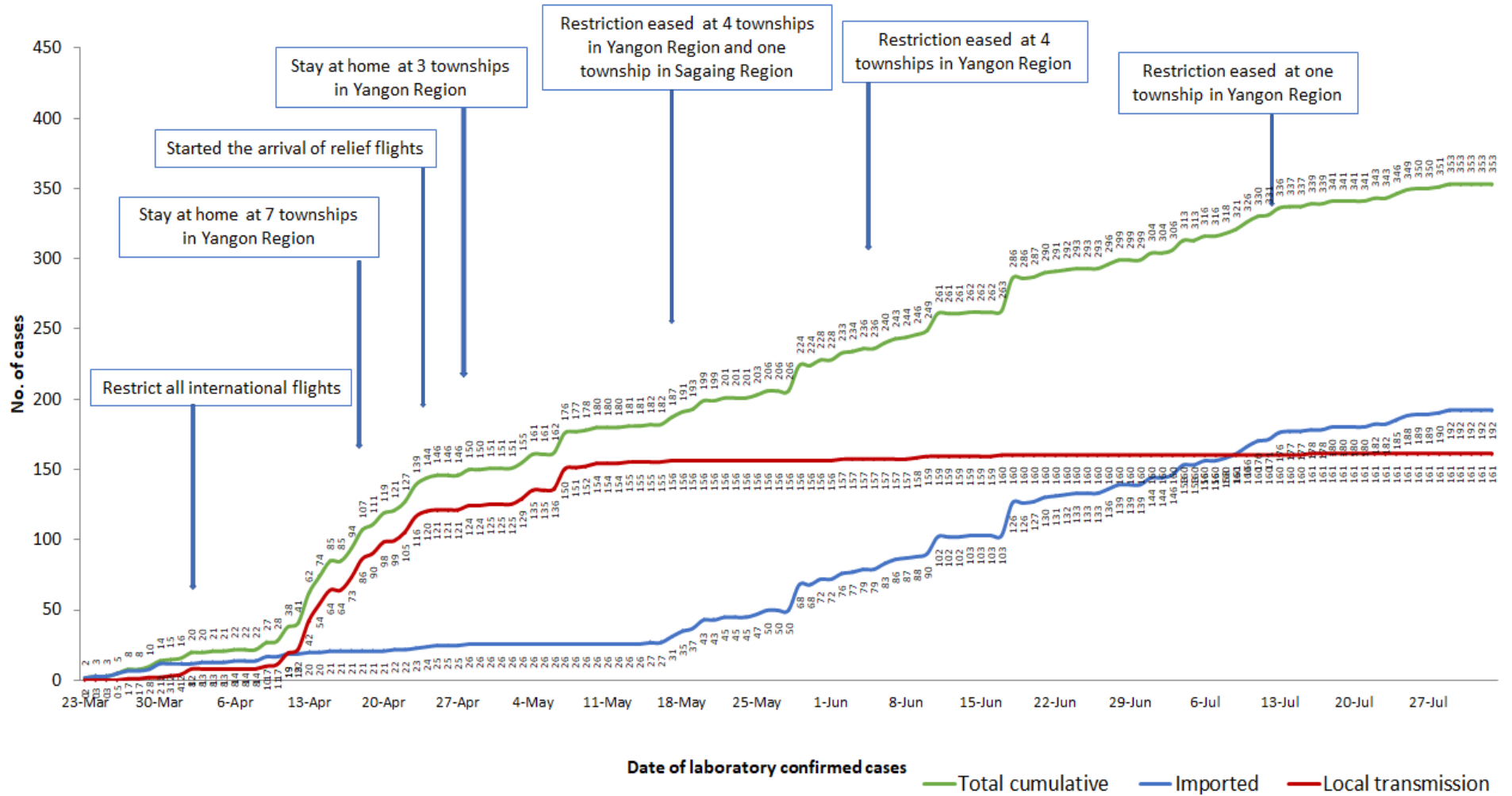
Map showing COVID-19 laboratory confirmed cases



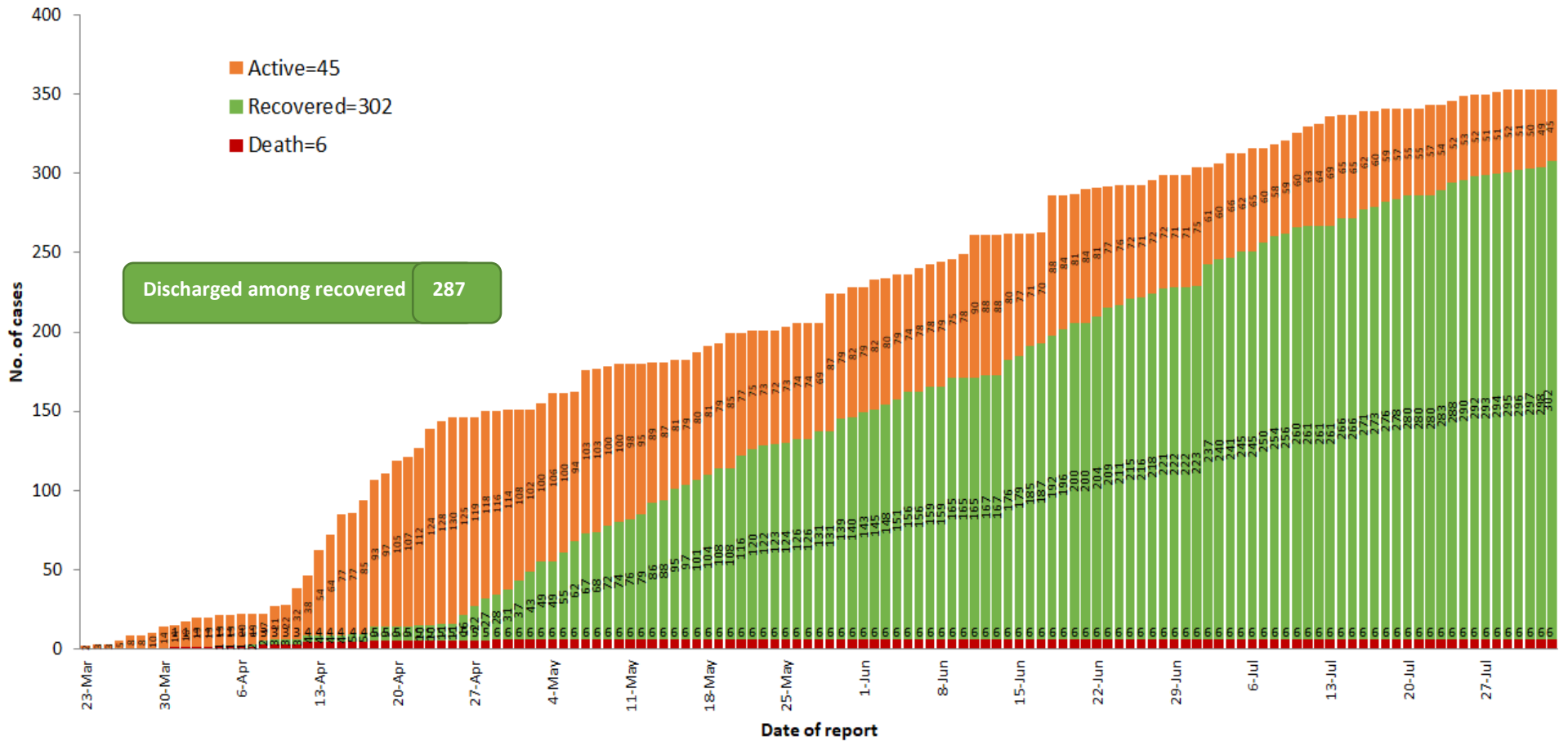
# COVID-19 confirmed cases by types of transmissions (as of 2.8.2020, 10:00 pm) n=353



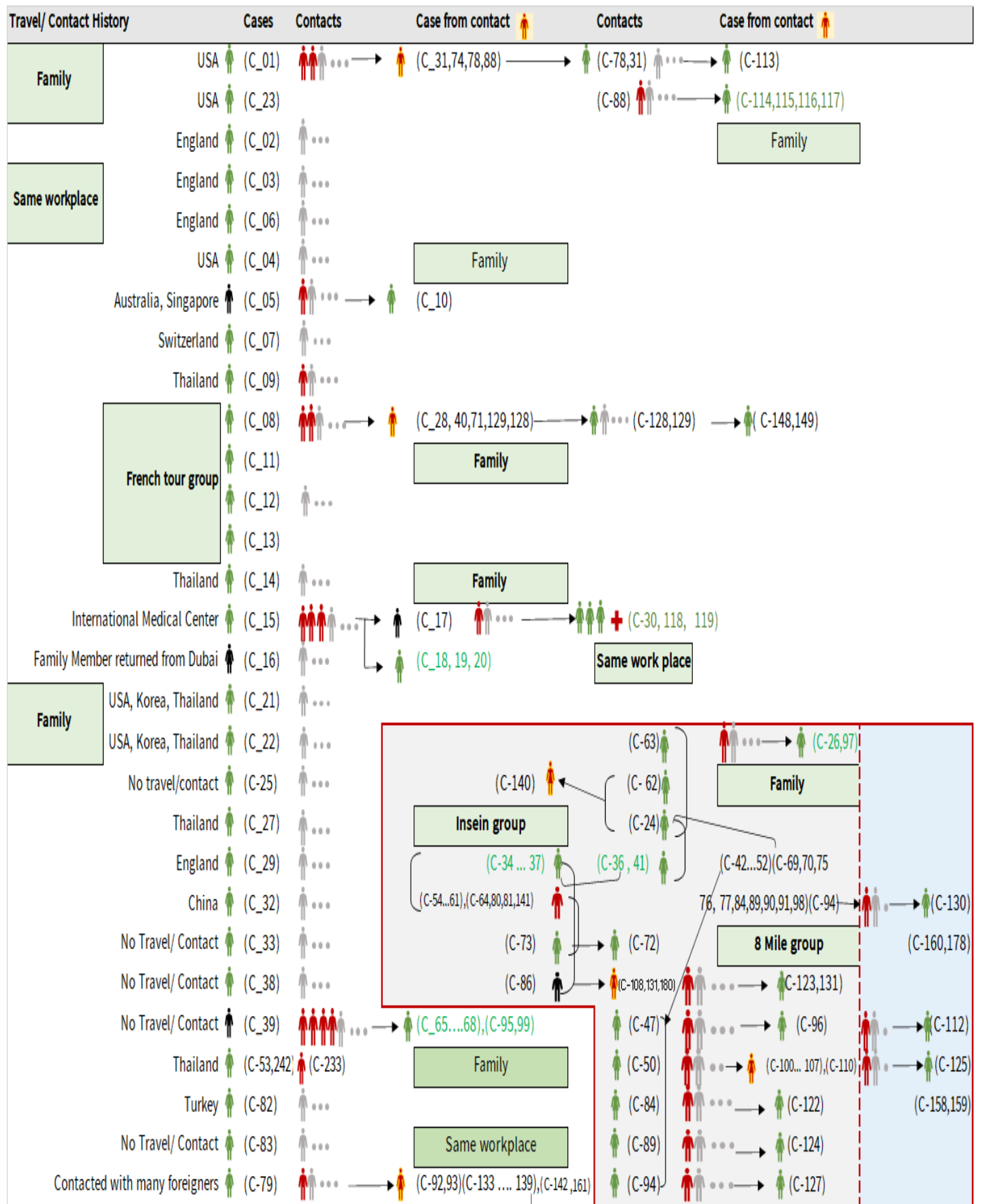
# Total laboratory confirmed cases by date (as of 2.8.2020, 10:00 pm), n= 353



## Cumulative Number of active confirmed cases, recovered and deaths (23.3.2020 – 2.8.2020), n (cumulative)=353



# Summary of COVID-19 confirmed cases (as of 2.8.2020), n (contacts)= 5,781



## Summary of COVID-19 confirmed cases (as of 2.8.2020), n (contacts)= 5,781

Travel/ Contact History	Cases	Contacts	Case from contact	Contacts	Case from contact
No Travel/ Contact	(C-85)	...			(C-110)
No travel / Contact	(C-87)	... →			(C-28,40,42,43,44,45,46,48,49,51,52)
No travel / Contact	(C-109)	...	(C-139)   ... →	(C-146)	(C-54,55,56,57,58,60,61,63,64,69,70)
No travel / Contact	(C-111)	...	(C-133,134,142)   ... →	(C-147)	(C-71,74,75,76,77,80,81,88,90,91,92,93)
No travel/Contact	(C-120)	...			(C-98,100,101,102,103,104,105,106,107,108)
England	(C-327)	(C-121,302,303,317)			(C-133,134,135,136,137,138,139,140,141,142)
No travel/Contact	(C-132)	...			(C-151,152,153,154,157,158,159,160,161)
Dubai/Thailand	(C-143)	...			(C-164,165,167,168,170,171,172,174)
No travel/Contact	(C-144)	...			(C-178,184,189,191,193,205,207,216,217,218)
India	(C-145,204,209,210,212,213,215,220,221,223,224,229,225,227,228,252,255,259,296,299,305,306,3				(C-226,233,234,235,237,246,253,258)
China	(C-150,230)				
Contact with religious event cluster	(C-162)	... →	(C-165 ... 177)	(C-166,169,173,175,176,177)	
No travel/contact	(C-155)	... →	(C-163,164)  (163)	(C-177)  ... →	(C-179)  ... →
No travel/contact	(C-156)	...			
No travel/contact	(C-183)	...			
Malaysia	(C-184,189,273,280,351,353)	(C-182,185,186,191,188,190,187,200,201,232,275,282)			
UAE	(C-301,315,316,337)	(C-193,192,194,195,196,197,198,199,300,301,314,340)			
Italy	(C-243,202)				
No travel/Contact	(C-231)				
Bangladesh	(C-234,244,247,250,262,309,310,334)	(C-244,245,247,248,250,262,291,292,293,308,325,326,348)			
No travel/contact	(C-245)	...			
No travel/contact	(C-249)				
No travel/contact	(C-263)	...			
Thailand	(C-279,332,333,335,346,349,352)	(C-264,265,266,267,268,269,270,271,272,273,274,276,277,278,280,281,283,284,285,286,287,294,304,312,336,338)			
Quata	(C-288)	(C-289,290)			
India	(C-203,205.....214,216...219,221.... 229,....240,241,246,253,254...258,260,261,295,297,298,307,322,323,324,344,345)	(C-251,328,329,330)			
Lao	(C-311)	...			
Singapore	(C-313)	...			
Philippines	(C-319,321,342,343)	(C-320)			
USA	(C-347,350)	(C-331)			
No travel/contact	(C-339)	...			

### Summary of current situation

Type	New (1.8.2020-2.8.2020)	Total (on 2.8.2020)
Suspected and Person Under Investigation (PUI)	16	117
Hospital Quarantine	7	43
Facility Quarantine	593	18,421

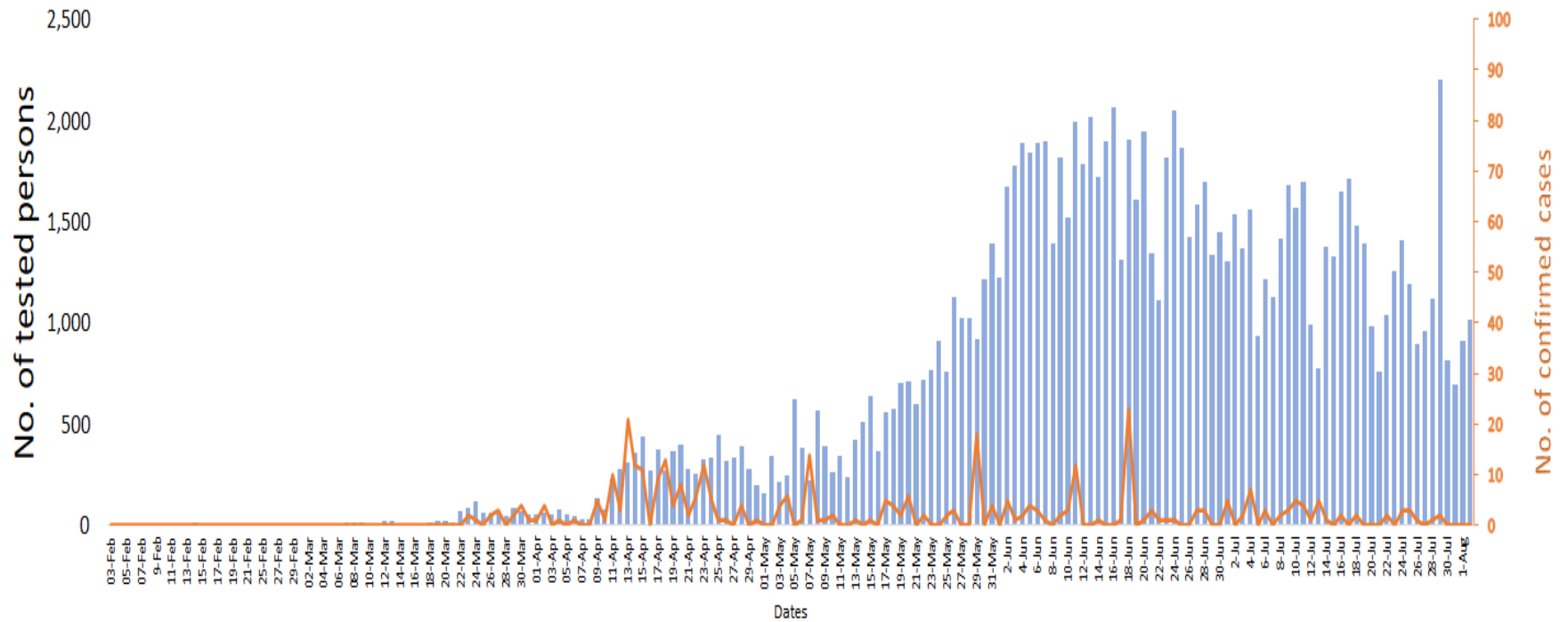
#### Person under Investigation (PUI) by State/Region hospitals (31.1.2020 – 2.8.2020) n= 6,835

No.	State/Region	PUI
1	Yangon	3419
2	Mandalay	1408
3	Kayin	304
4	Mon	283
5	Shan (N)	240
6	Magway	217
7	Bago	181
8	Shan (E)	126
9	Shan (S)	104
10	Ayeyarwaddy	102
11	Sagaing	90
12	Kayah	81
13	Thanintharyi	75
14	Rakhine	69
15	Naypyitaw	64
16	Kachin	42
17	Chin	30
<b>Total</b>		<b>6,835</b>

#### No. of Facility Quarantine sites and Quarantined people on 2.8.2020

No.	State/Region	No. of facilities	Total no. of quarantine
1	Yangon	54	3240
2	Mon	257	2448
3	Bago	223	2301
4	Kayin	356	2253
5	Tanintharyi	189	1699
6	Magway	418	1538
7	Sagaing	170	1019
8	Mandalay	66	806
9	Rakhine	247	742
10	Kachin	426	612
11	Ayeyarwaddy	167	595
12	Shan South	79	509
13	Naypyitaw	1	274
14	Shan North	269	239
15	Kayah	18	81
16	Chin	17	61
17	Shan East	9	4
<b>Total</b>		<b>2,966</b>	<b>18,421</b>

## COVID-19 confirmed cases among tested by date (as of 2.8.2020)



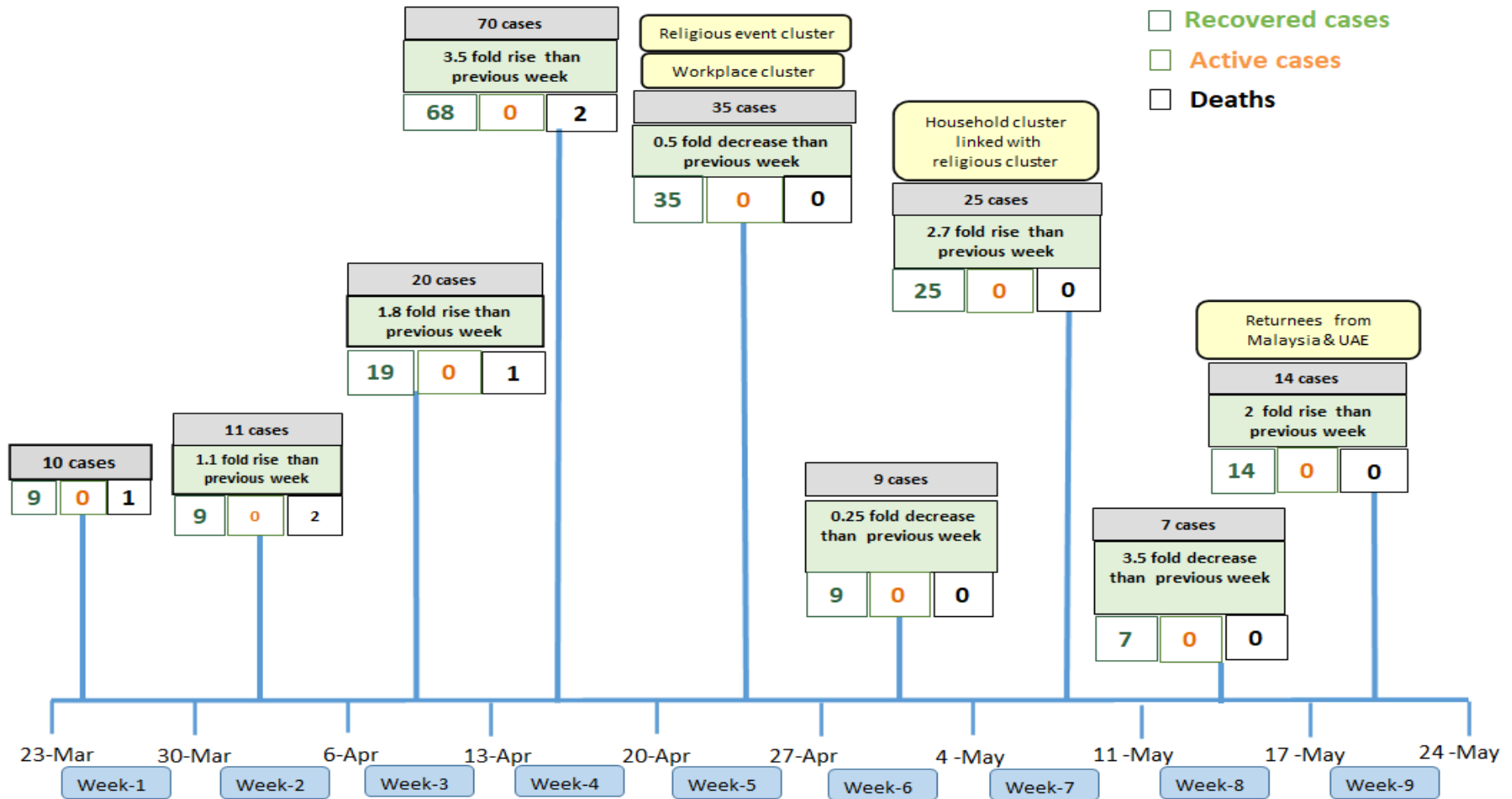
Total tested persons - 119,142

Total confirmed cases - 353

■ Tested person    — Confirmed case

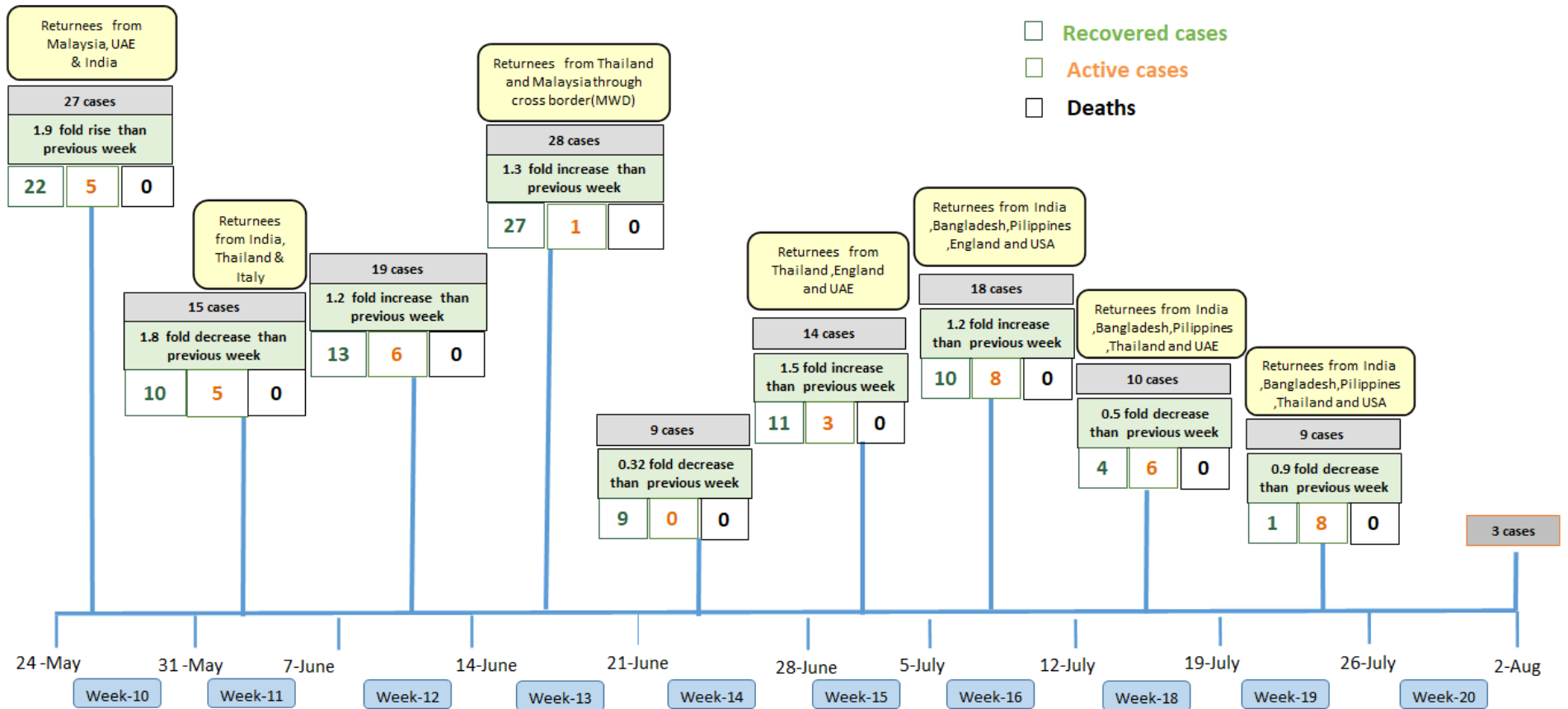


## Summary of new confirmed cases detection after first two cases (as of 2.8.2020)



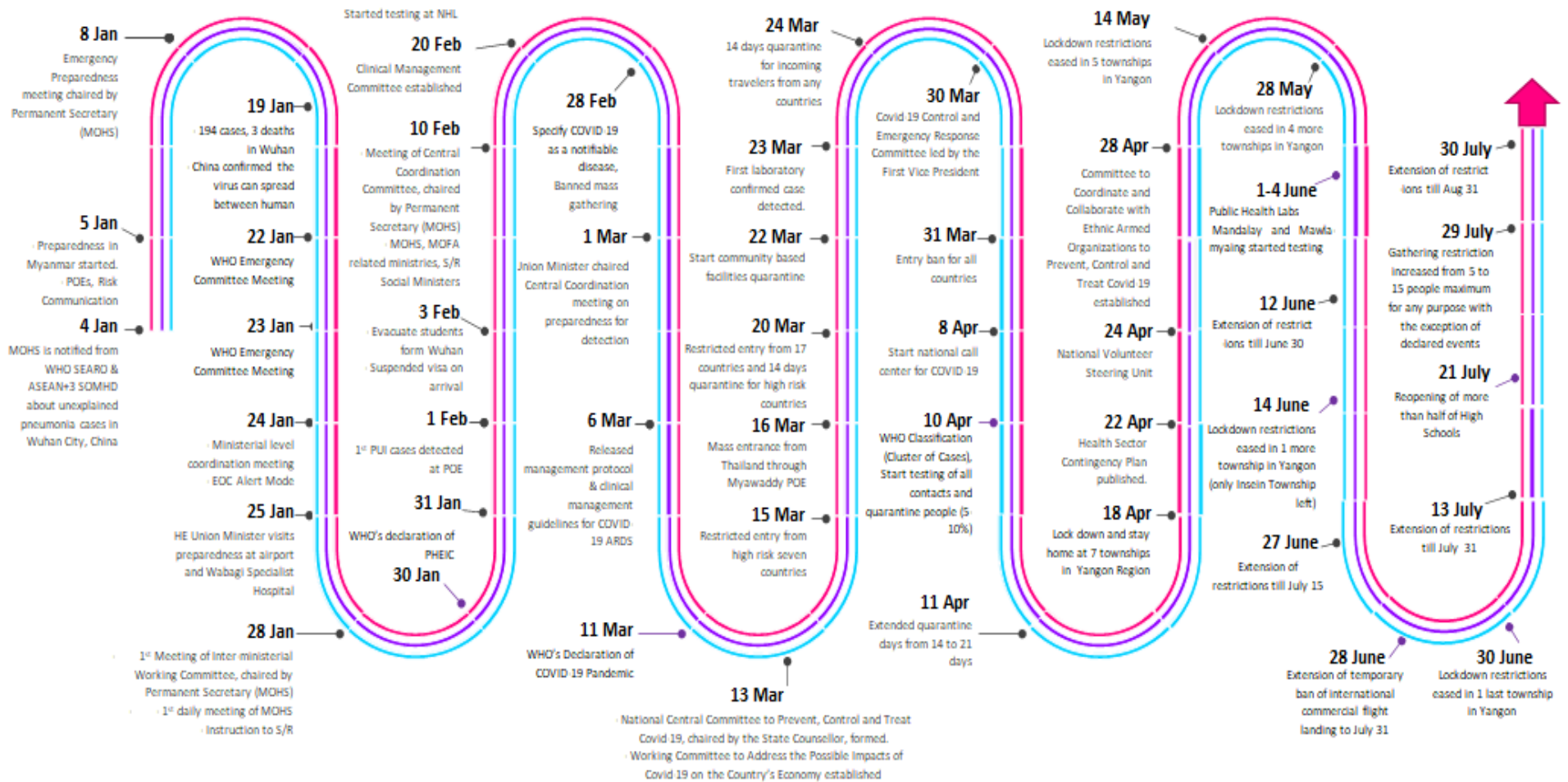
- Confirmed cases were detected as a peak in the 4th week after first confirmed cases due to the religious event cluster.
- Confirmed cases were decreased but still raised than the first 3 weeks due to the religious event cluster and workplace cluster.
- There were an increased in numbers of cases in the 7th week after the first two cases due to the household cluster linked with a religious cluster.
- Confirmed cases were detected by a nearly two-fold rise in the 9th and 10th weeks after the first two cases because of returnees coming back by relief flights.

# Summary of new confirmed cases detection after first two cases (as of 2.8.2020)



- Confirmed cases were detected as a peak in the 4th week after first confirmed cases due to the religious event cluster.
- Confirmed cases were decreased but still raised than the first 3 weeks due to the religious event cluster and workplace cluster.
- There were an increased in numbers of cases in the 7th week after the first two cases due to the household cluster linked with a religious cluster.
- Confirmed cases were detected by a nearly two-fold rise in the 9th and 10th weeks after the first two cases because of returnees coming back by relief flights.

# Timeline of Preparedness and Response to COVID-19 in Myanmar (as of 2.8.2020)



Hotline Number— 0673 420 268

Data source - CEU, DMS, NHL, PHL (MDY and MLM), DMR, DSGH, State and Region Health Departments