



Ministry of Health and Sports (Myanmar)

Department of Public Health

Central Epidemiology Unit

(24 July 2020)

Coronavirus Disease 2019 (COVID-19)

Situation Report - 108

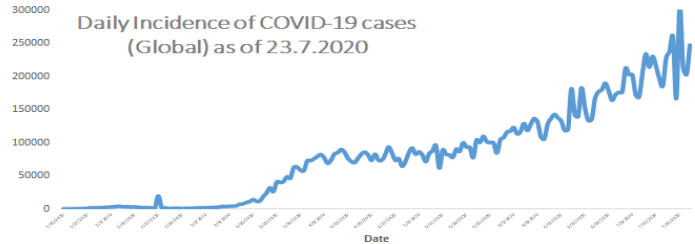
Data as reported by States and Regions by 12:00 PM MST 23 July 2020

Global Situation (WHO situation report - 185) data as of 14:30 MST 23 July 2020

Confirmed cases
15,012,731

Deaths
619,150

Case Fatality Rate
4.1 %



Myanmar Situation

Total Tested

107,928

Confirmed Cases

343

Negative

107,585

Recovered

283

82.5% of Confirmed cases

Active

54

15.7% of Confirmed cases

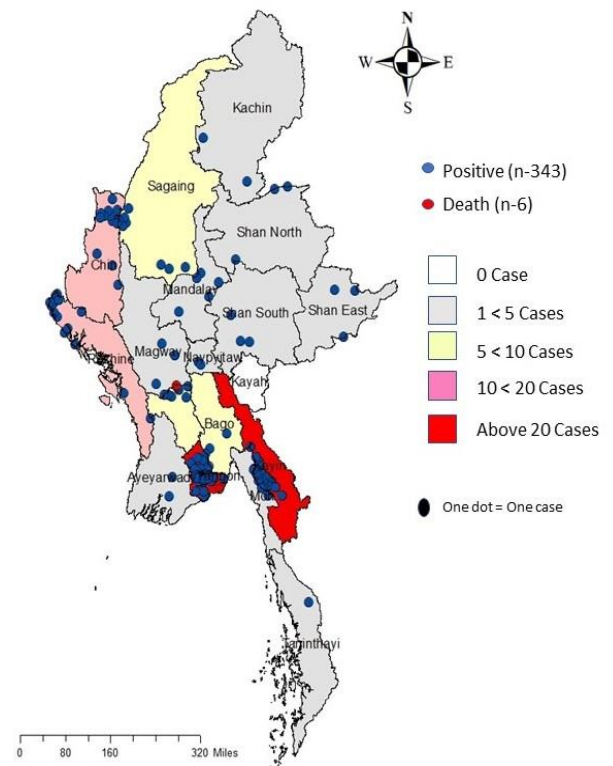
Death

6

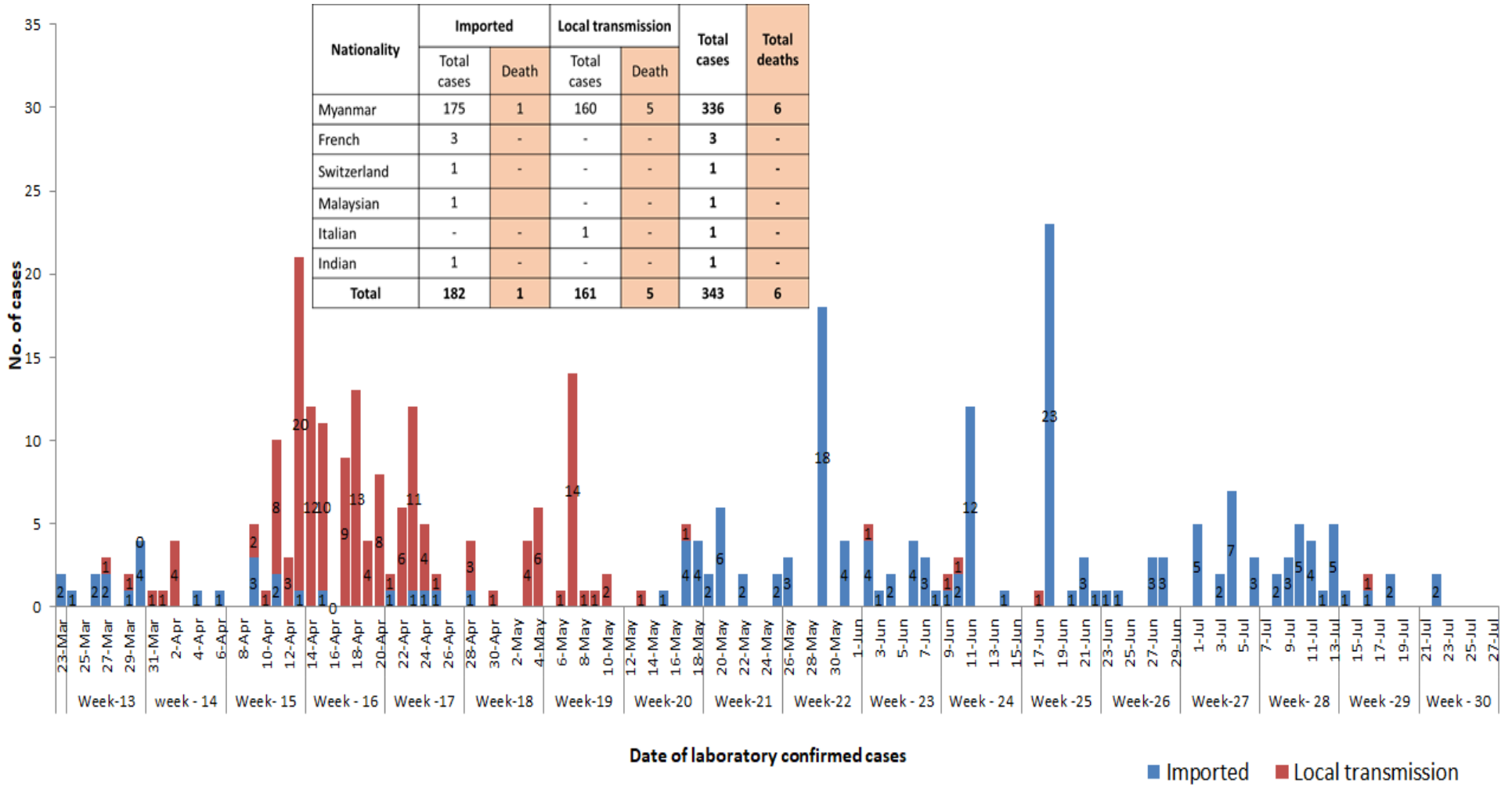
1.7% of Confirmed cases

No	State/Region	COVID –19 Confirmed case	Recovered	Deaths
1	Yangon	246	195(2 New)	5
2	Kayin	26	24	-
3	Rakhine	15	12(1 New)	-
4	Chin	12	10	-
5	Sagaing	9	9	-
6	Bago	9	8	1
7	Shan (South)	4	4	-
8	Mandalay	4	3	-
9	Shan (East)	3	3	-
10	Shan (North)	3	3	-
11	Magway	3	3	-
12	Naypyitaw	2	2	-
13	Ayeyarwaddy	2	2	-
14	Kachin	2	2	-
15	Mon	2	2	-
16	Thanintharyi	1	1	-
17	Kayah	-	-	-
Total		343	283(3 New)	6

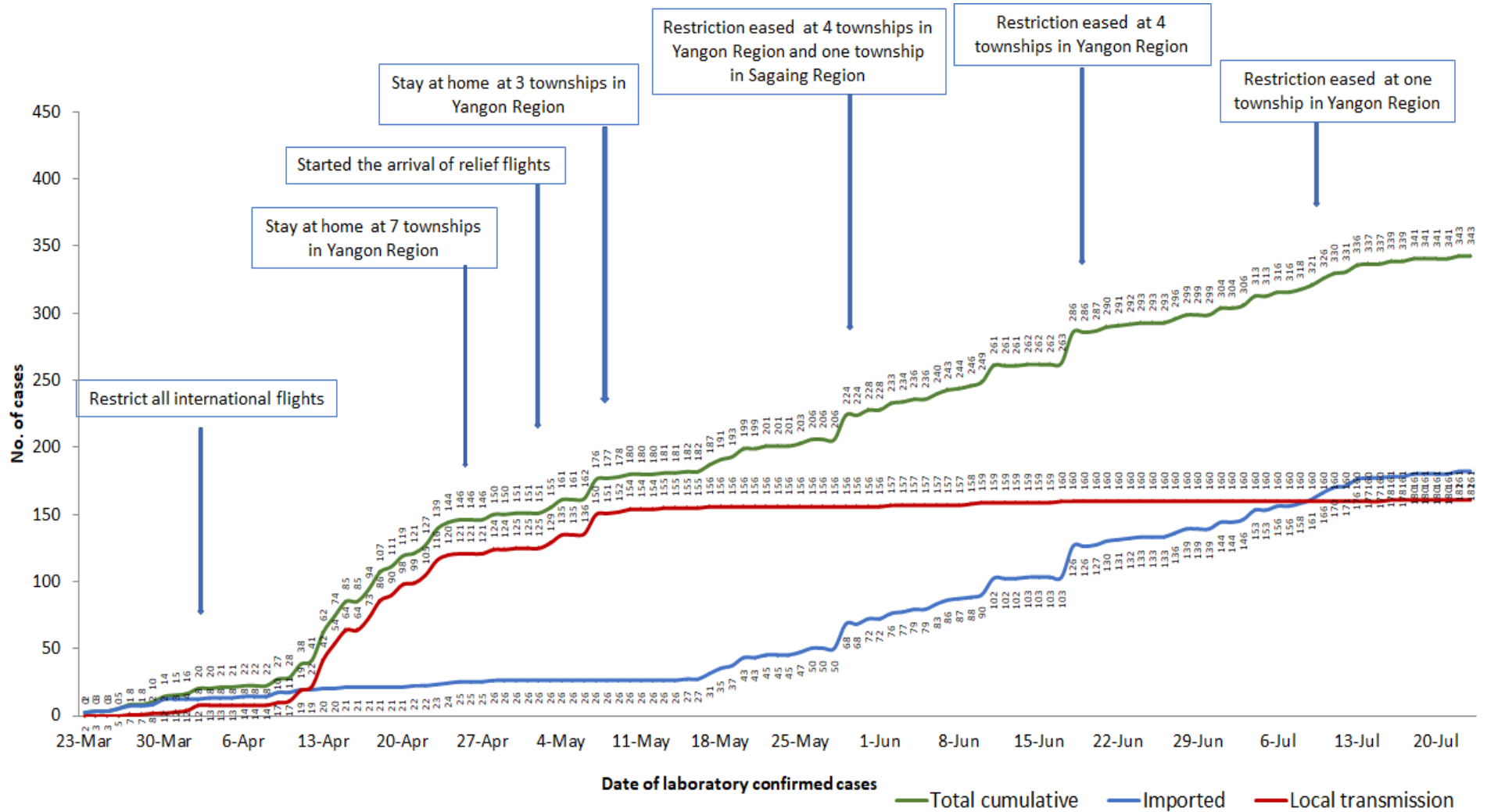
Map showing COVID-19 laboratory confirmed cases



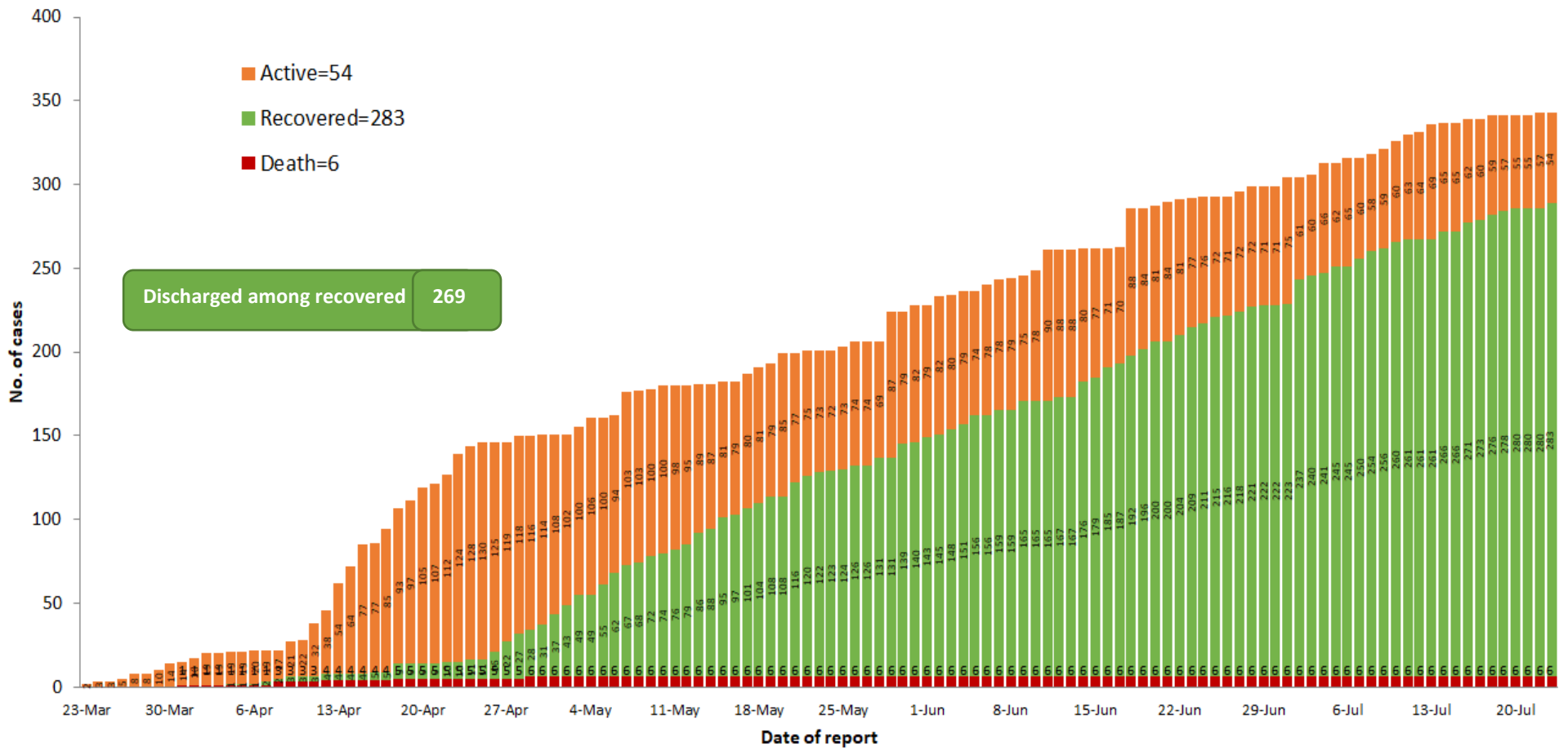
COVID-19 confirmed cases by types of transmissions (as of 23.7.2020, 12:00 pm) n=343



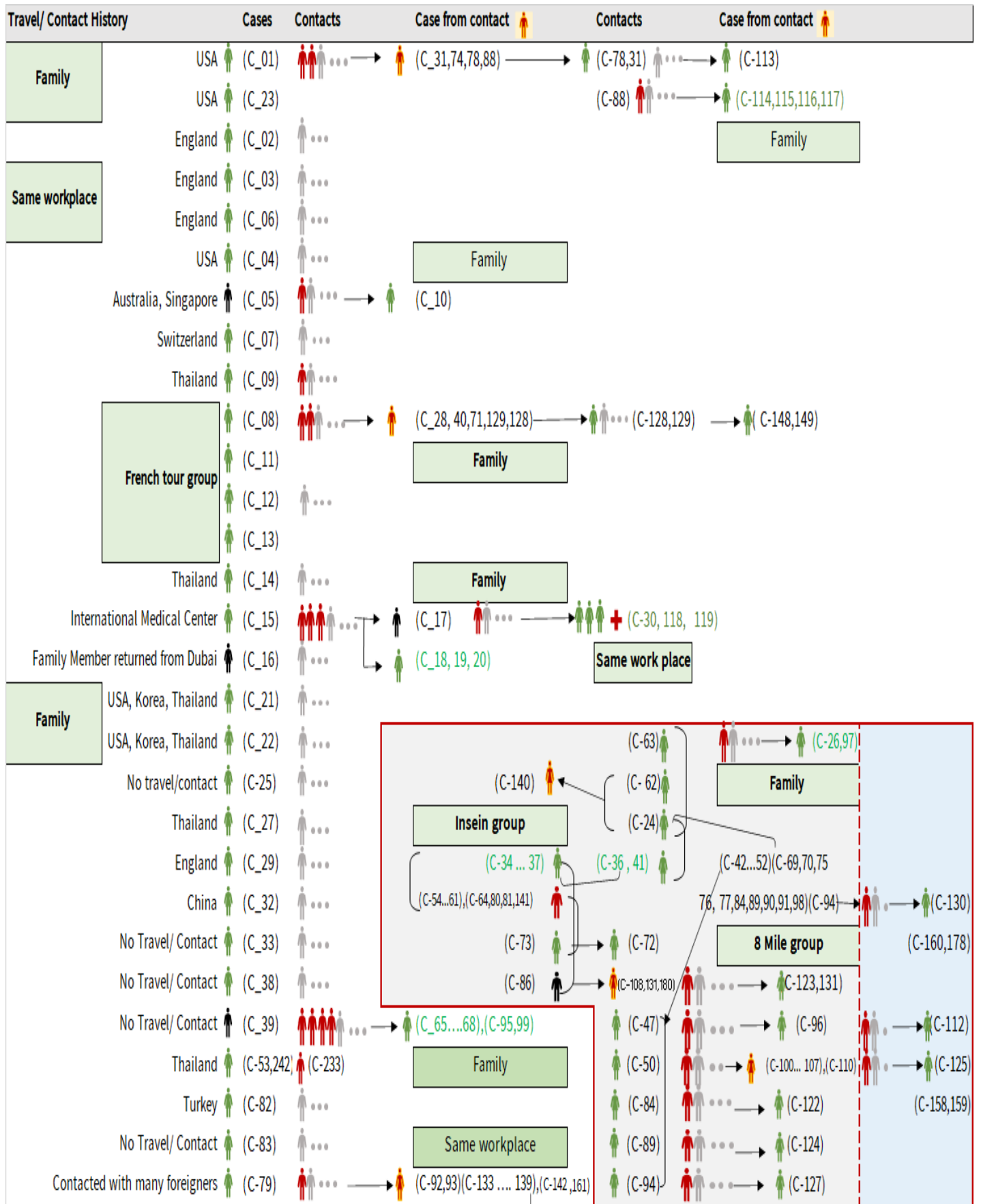
Total laboratory confirmed cases by date (as of 23.7.2020, 12:00 pm), n= 343



Cumulative Number of active confirmed cases, recovered and deaths (23.3.2020 – 23.7.2020), n (cumulative)=343



Summary of COVID-19 confirmed cases (as of 23.7.2020), n (contacts)= 5,774



Summary of COVID-19 confirmed cases (as of 23.7.2020), n (contacts)= 5,774

Travel/ Contact History	Cases	Contacts	Case from contact	Contacts	Case from contact
No Travel/ Contact	(C-85)	...			(C-110)
No travel / Contact	(C-87)	... →	(C-126)		(C-28,40,42,43,44,45,46,48,49,51,52)
No travel / Contact	(C-109)	...	(C-139)	... →	(C-146)
No travel / Contact	(C-111)	...	(C-133,134,142)	... →	(C-147)
No travel/Contact	(C-120)	...			(C-98,100,101,102,103,104,105,106,107,108)
England	(C-317,327)	(C-121,302,303)			(C-133,134,135,136,137,138,139,140,141,142)
No travel/Contact	(C-132)	...			(C-151,152,153,154,157,158,159,160,161)
Dubai/Thailand	(C-143)	...			(C-164,165,167,168,170,171,172,174)
No travel/Contact	(C-144)	...			(C-178,184,189,191,193,205,207,216,217,218)
India	(C-145,204,209,210,213,215,220,221,223,224,229,225,227,228,252,255,259,296,299,305,306)				(C-226,233,234,235,237,246,253,258)
China	(C-150,230)				
Contact with religious event cluster	(C-162)	... →	(C-151,152,153,154,157)	Household →	(C-165 ... 177) (C-166,169,173,175,176,177)
No travel/contact	(C-155)	... →	(C-163,164)	(163)	(C-177) ... → (C-179) ... → (C-181)
No travel/contact	(C-156)	...			
No travel/contact	(C-183)	...			
Malaysia	(C-184,189,273,280)	(C-182,185,186,191,188,190,187,200,201,232,275,282)			
UAE	(C-300,301,315,316,337,340)	(C-193,192,194,195,196,197,198,199,301,314)			
Italy	(C-243,202)				
No travel/Contact	(C-231)				
Bangladesh	(C-234,244,247,250,262,308,309,310,325,326,334)	(C-244,245,247,248,250,262,291,292,293)			
No travel/contact	(C-245)	...			
No travel/contact	(C-249)				
No travel/contact	(C-263)	...			
Thailand	(C-269,279,332,333,335,336,338)	(C-264,265,266,267,268,270,271,272,273,274,276,277,278,280,281,283,284,285,286,287,294,304,312)			
Quata	(C-288)	(C-289,290)			
India	(C-203,205.....214,216...219,221.... 229,235....240,241,246,251,253,254... 258,260,261,295,297,298,307,318,322,323,324,328,329,330)				
Lao	(C-311)	...			
Singapore	(C-313)	...			
Philippines	(C-319,320,321,342,343) ...				
USA	(C-331)	...			
No travel/contact	(C-339)	...			

Summary of current situation

Type	New (22.7.2020-23.7.2020)	Total (on 23.7.2020)
Suspected and Person Under Investigation (PUI)	18	173
Hospital Quarantine	4	57
Facility Quarantine	1,118	21,487

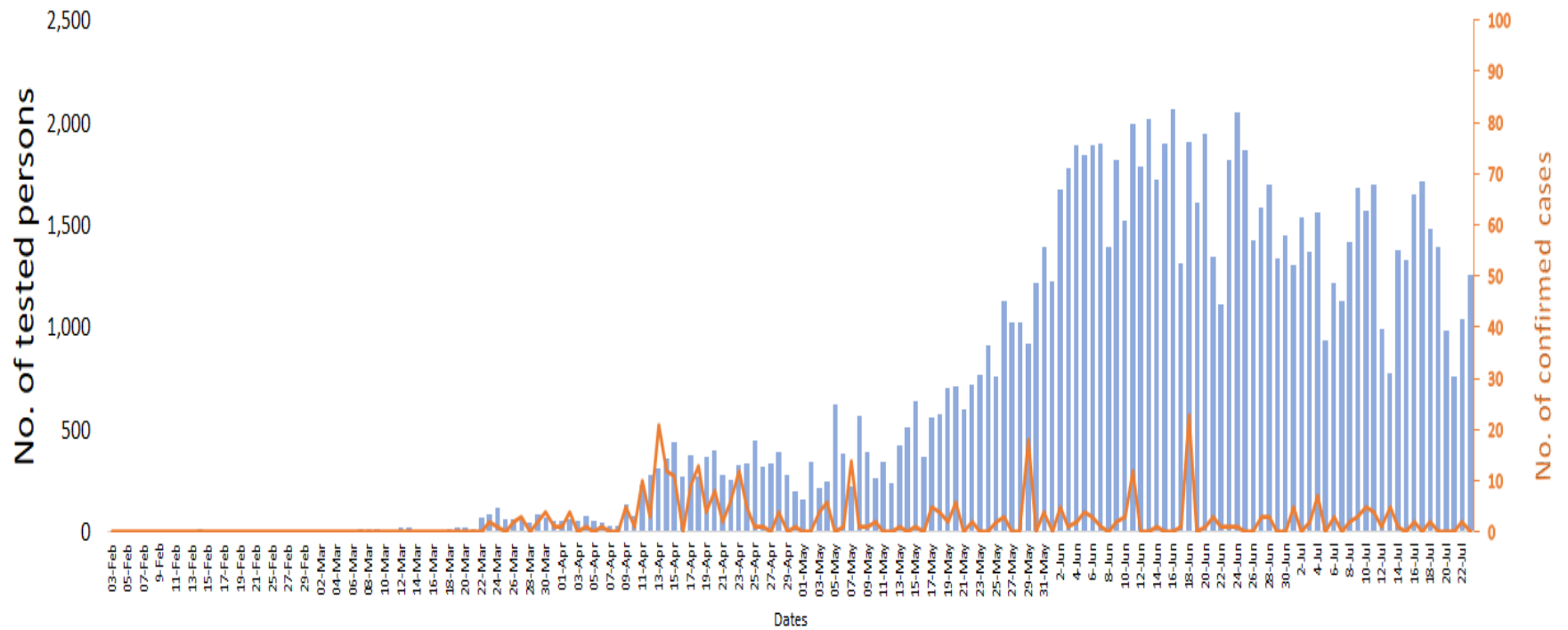
Person under Investigation (PUI) by State/Region hospitals (31.1.2020 – 23.7.2020) n= 6,629

No.	State/Region	PUI
1	Yangon	3,342
2	Mandalay	1,344
3	Kayin	286
4	Mon	268
5	Shan (N)	226
6	Magway	210
7	Bago	180
8	Shan (E)	123
9	Shan (S)	103
10	Ayeyarwaddy	102
11	Sagaing	90
12	Kayah	80
13	Thanintharyi	73
14	Rakhine	69
15	Naypyitaw	64
16	Kachin	40
17	Chin	29
Total		6,629

No. of Facility Quarantine sites and Quarantined people on 23.7.2020

No.	State/Region	No. of facilities	Total no. of quarantine
1	Yangon	63	3,253
2	Bago	260	2,972
3	Mon	315	2,849
4	Kayin	436	2,712
5	Tanintharyi	189	1,891
6	Magway	304	1,711
7	Sagaing	174	1,055
8	Mandalay	79	1,049
9	Rakhine	277	912
10	Shan South	96	749
11	Ayeyarwaddy	167	720
12	Kachin	423	698
13	Naypyitaw	2	390
14	Shan North	263	187
15	Kayah	18	144
16	Chin	15	135
17	Shan East	11	60
Total		3,092	21,487

COVID-19 confirmed cases among tested by date (as of 23.7.2020)

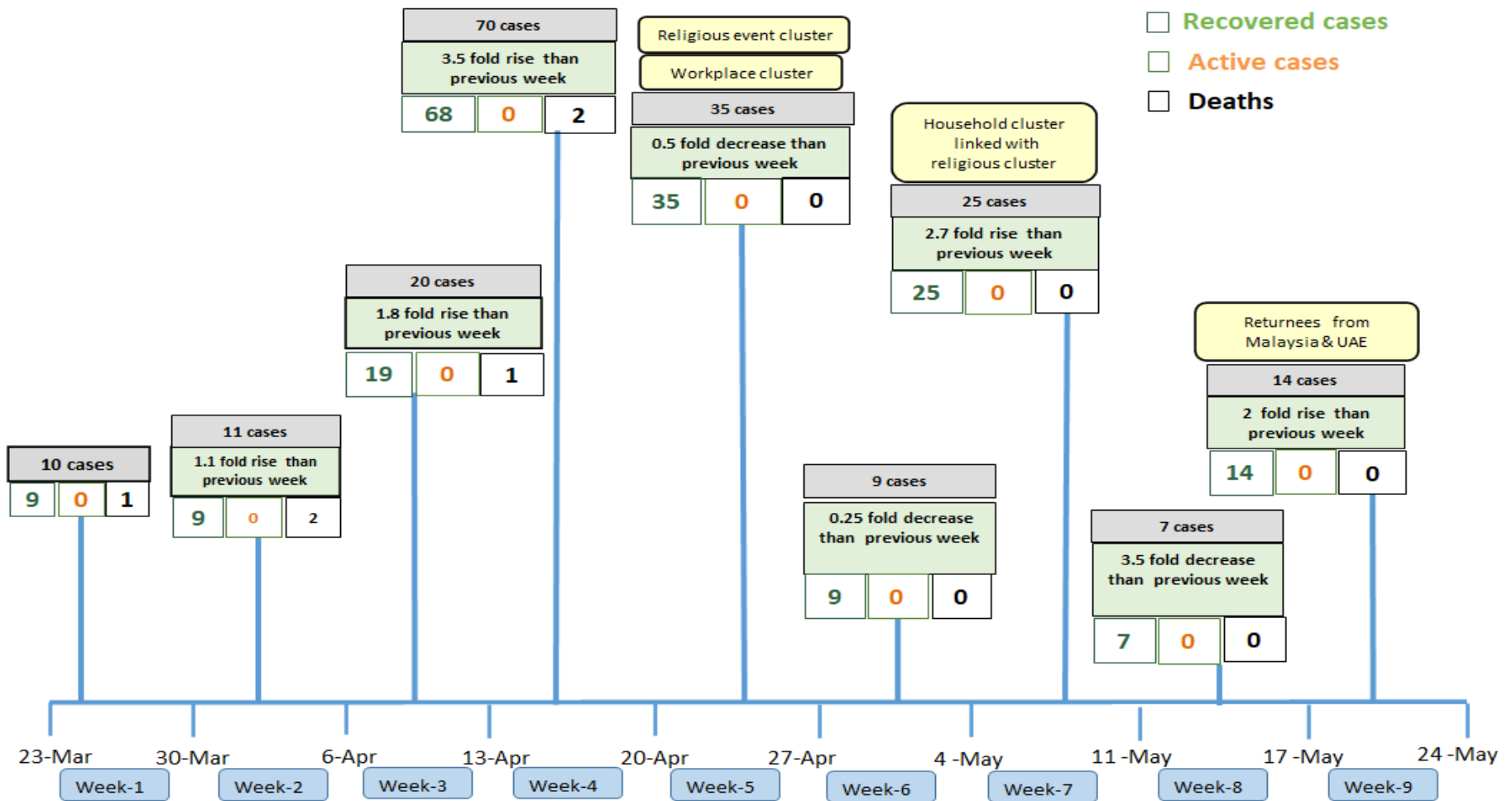


Total tested persons - 107,928

Total confirmed cases - 343

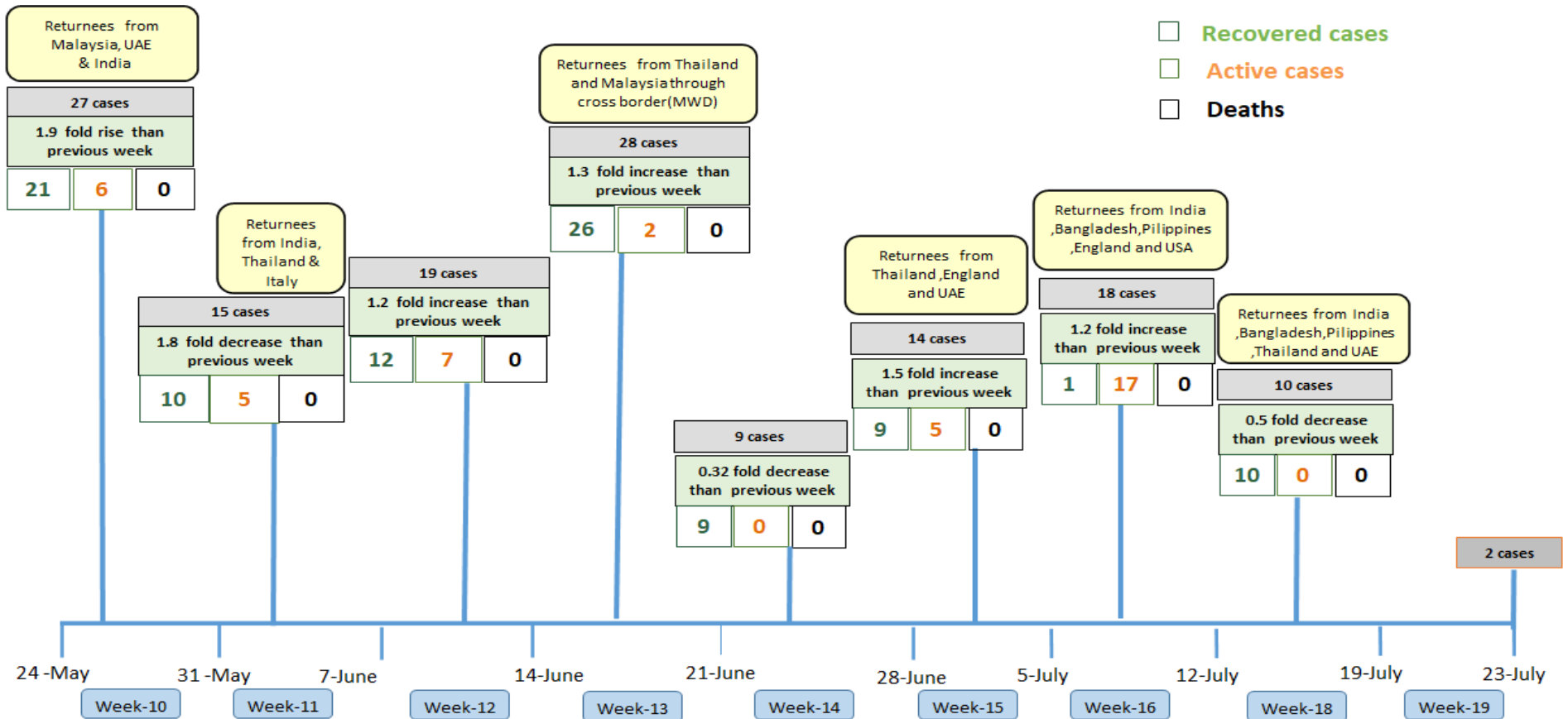
■ Tested person — Confirmed case

Summary of new confirmed cases detection after first two cases (as of 23.7.2020)



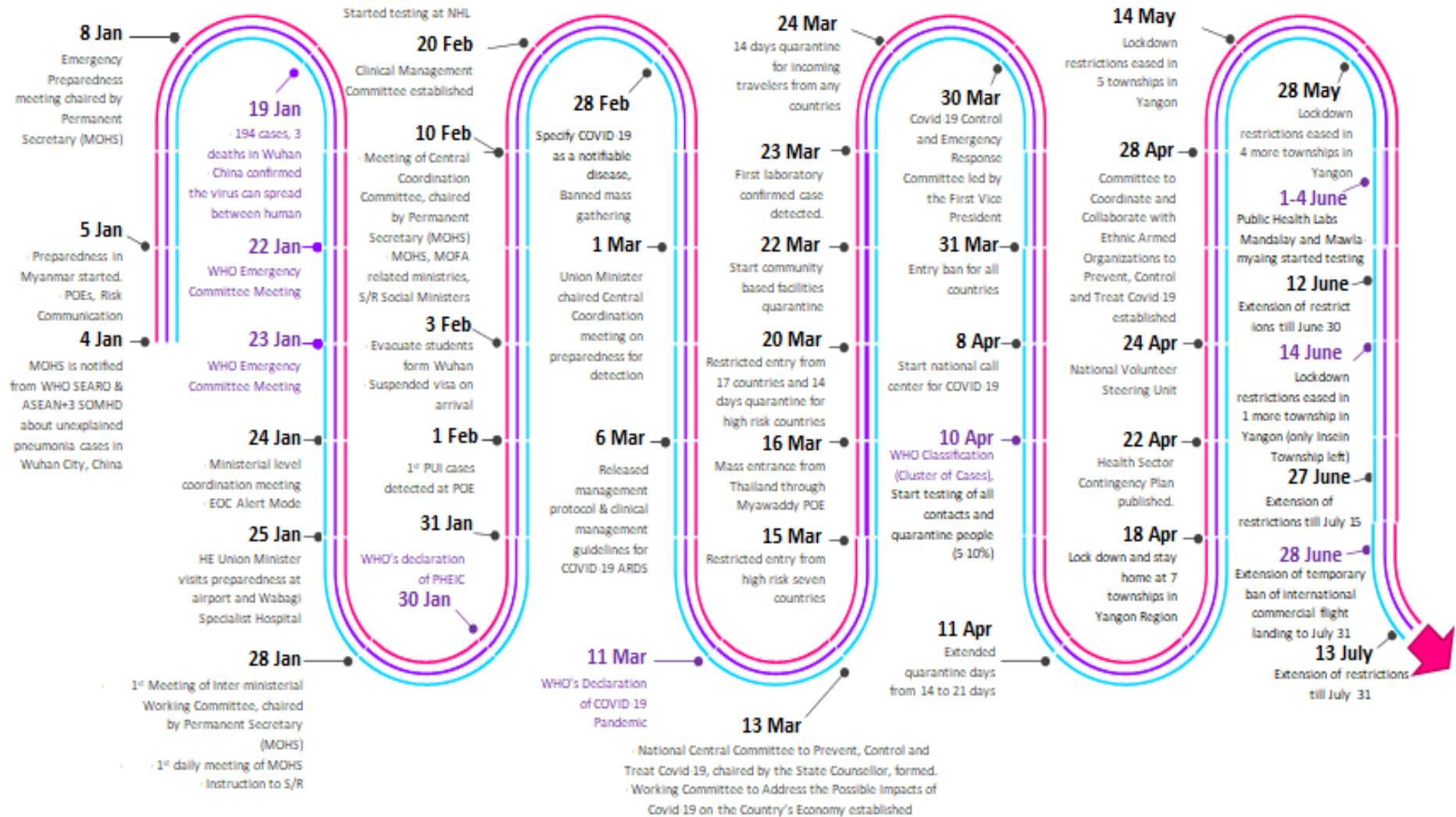
- Confirmed cases were detected as a peak in the 4th week after first confirmed cases due to the religious event cluster.
- Confirmed cases were decreased but still raised than the first 3 weeks due to the religious event cluster and workplace cluster.
- There were an increased in numbers of cases in the 7th week after the first two cases due to the household cluster linked with a religious cluster.
- Confirmed cases were detected by a nearly two-fold rise in the 9th and 10th weeks after the first two cases because of returnees coming back by relief flights.

Summary of new confirmed cases detection after first two cases (as of 23.7.2020)



- Confirmed cases were detected as a peak in the 4th week after first confirmed cases due to the religious event cluster.
- Confirmed cases were decreased but still raised than the first 3 weeks due to the religious event cluster and workplace cluster.
- There were an increased in numbers of cases in the 7th week after the first two cases due to the household cluster linked with a religious cluster.
- Confirmed cases were detected by a nearly two-fold rise in the 9th and 10th weeks after the first two cases because of returnees coming back by relief flights.

Timeline of Preparedness and Response to COVID-19 in Myanmar (as of 23.7.2020)



Hotline Number— 0673 420 268

Data source - CEU, DMS, NHL, PHL (MDY and MLM), DMR, DSGH, State and Region Health Departments