



Ministry of Health and Sports (Myanmar)

Department of Public Health

Central Epidemiology Unit

(25 July 2020)

Coronavirus Disease 2019 (COVID-19)

Situation Report - 109

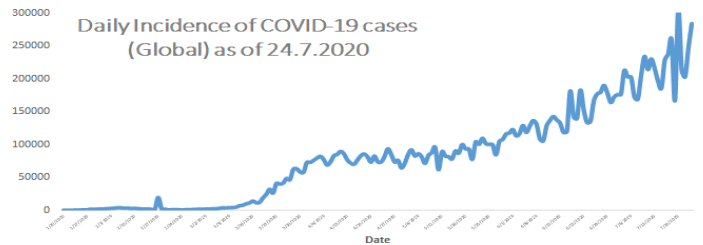
Data as reported by States and Regions by 10:00 PM MST 24 July 2020

Global Situation (WHO situation report - 186) data as of 14:30 MST 24 July 2020

Confirmed cases
15,296,926

Deaths
628,903

Case Fatality Rate
4.1 %



Myanmar Situation

Total Tested

109,334

Confirmed Cases

346

Negative

108,988

Recovered

288

83.2% of Confirmed cases

Active

52

15.0% of Confirmed cases

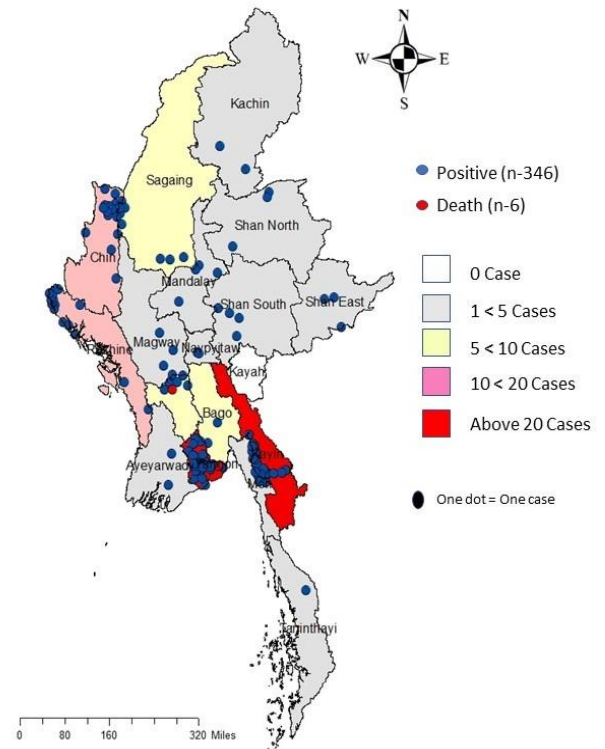
Death

6

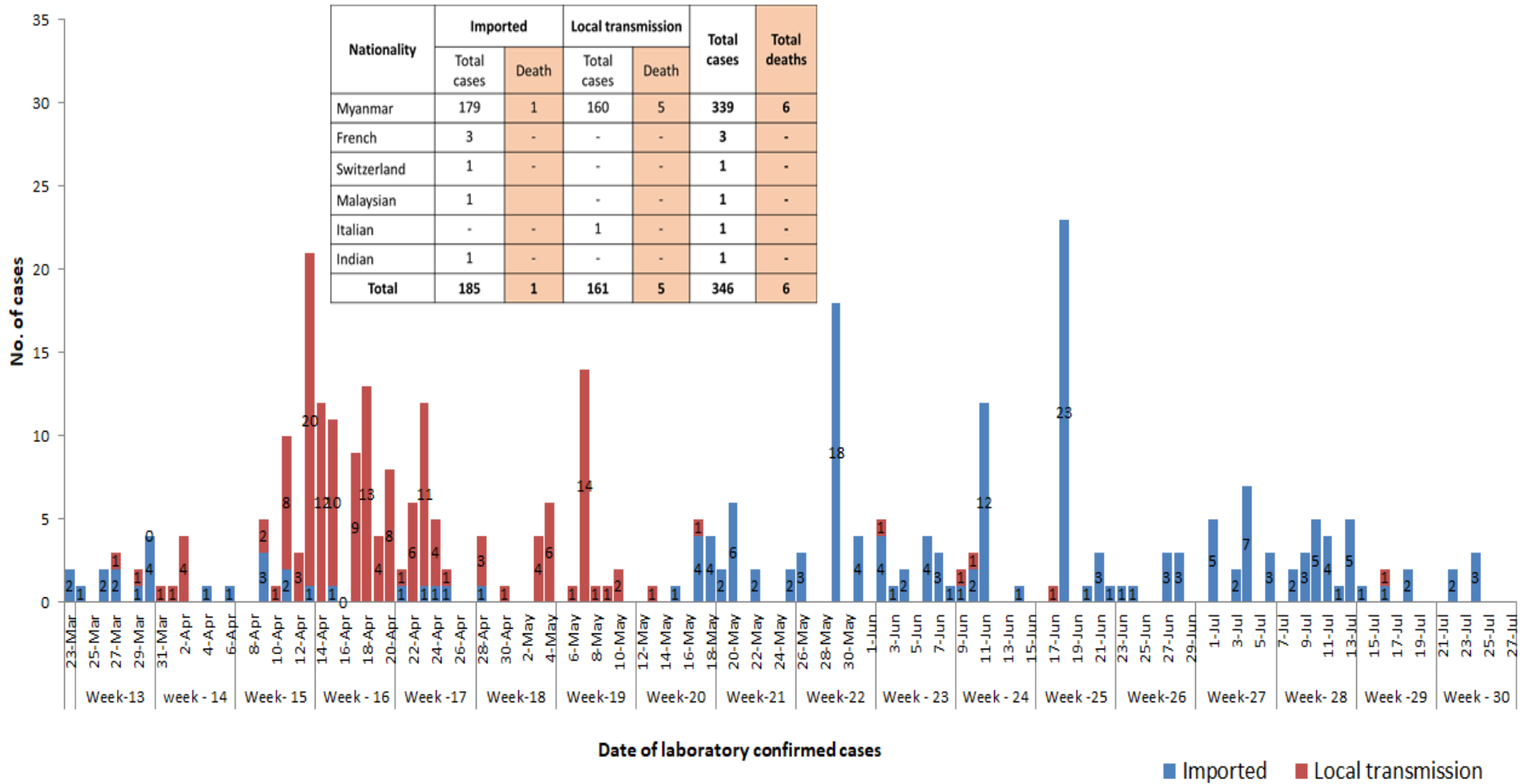
1.7% of Confirmed cases

No	State/Region	COVID –19 Confirmed case	Recovered	Deaths
1	Yangon	246	199(4 New)	5
2	Kayin	27(1 New)	24	-
3	Rakhine	15	12	-
4	Chin	14(2 New)	11(1 New)	-
5	Sagaing	9	9	-
6	Bago	9	8	1
7	Shan (South)	4	4	-
8	Mandalay	4	3	-
9	Shan (East)	3	3	-
10	Shan (North)	3	3	-
11	Magway	3	3	-
12	Naypyitaw	2	2	-
13	Ayeyarwaddy	2	2	-
14	Kachin	2	2	-
15	Mon	2	2	-
16	Thanintharyi	1	1	-
17	Kayah	-	-	-
Total		346(3 New)	288(5 New)	6

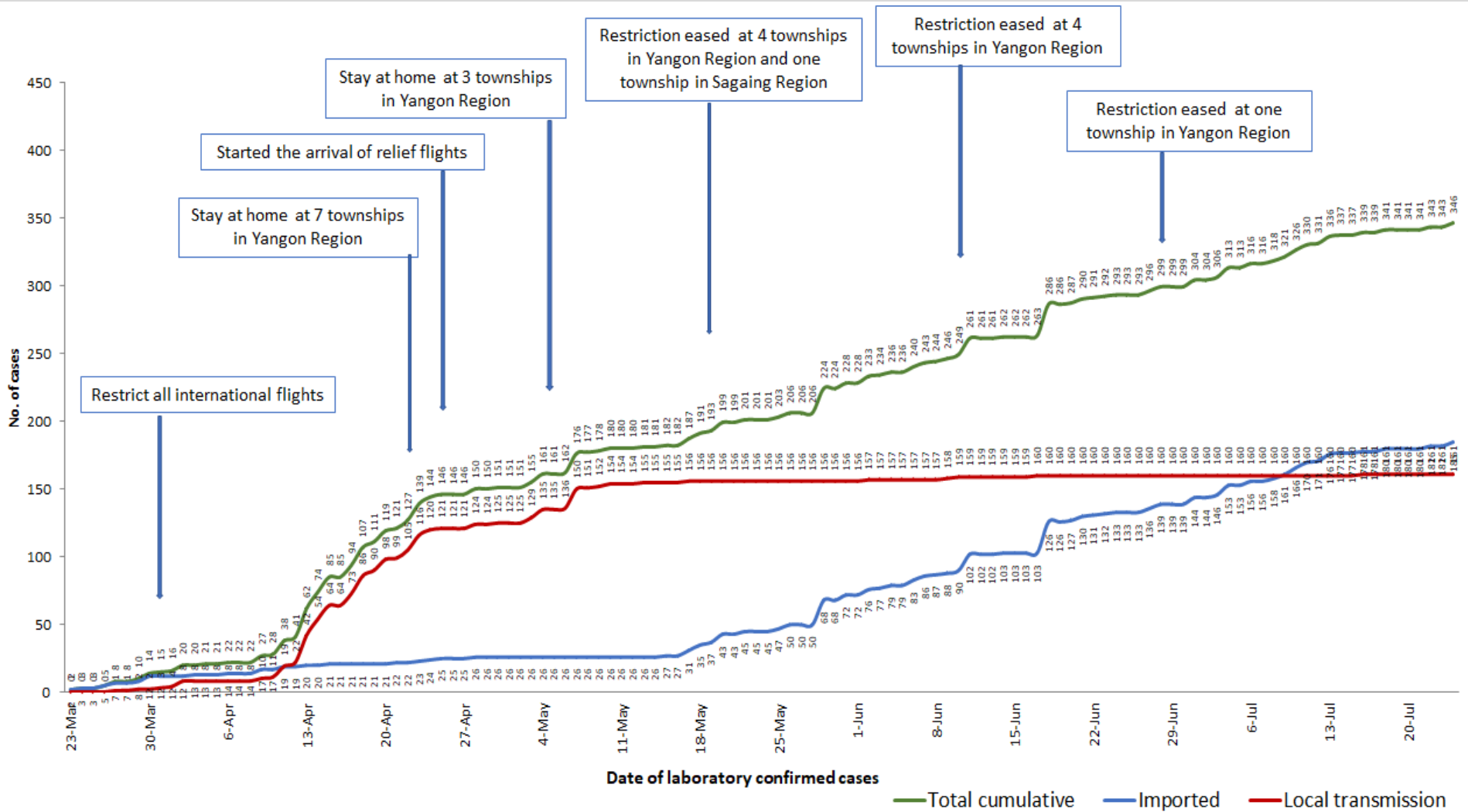
Map showing COVID-19 laboratory confirmed cases



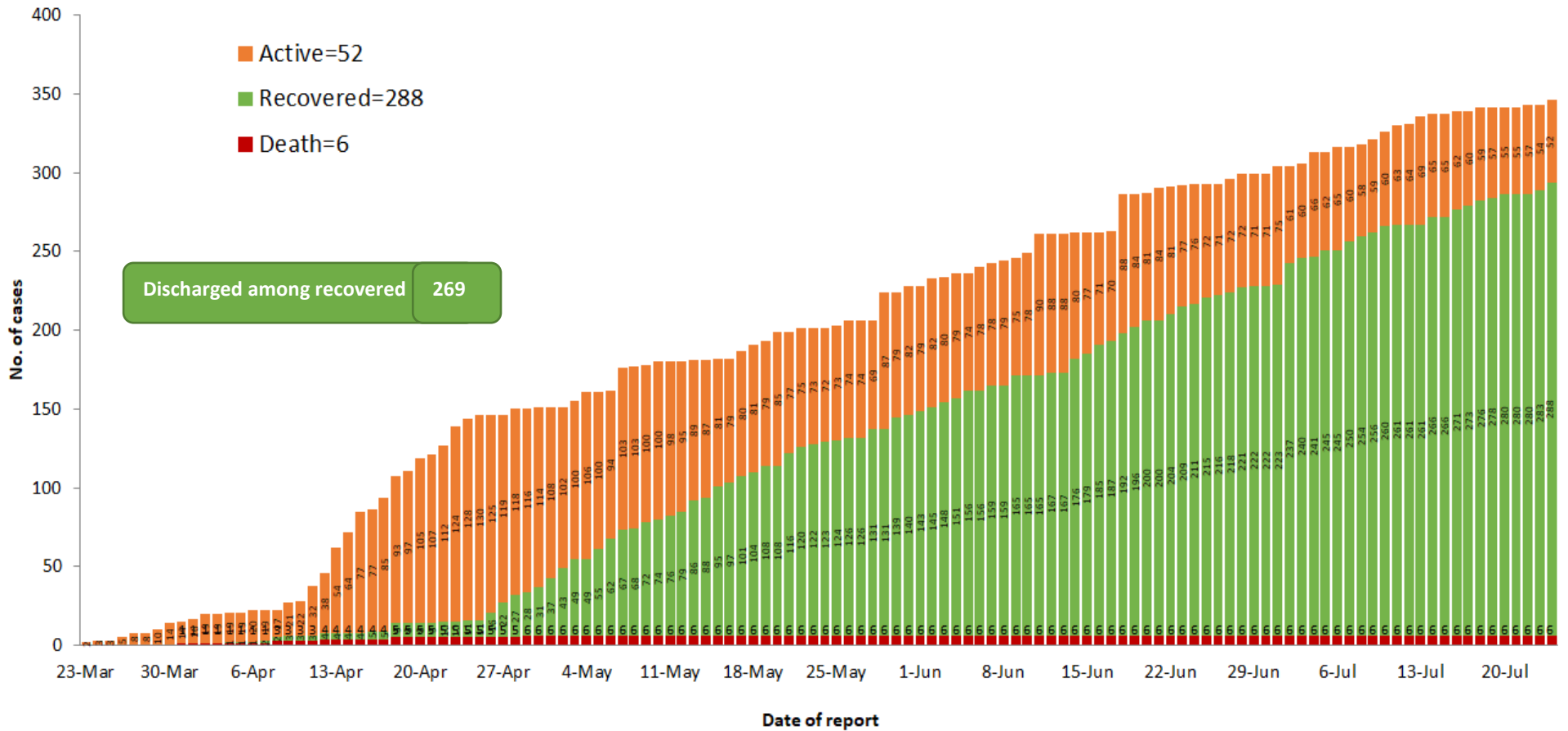
COVID-19 confirmed cases by types of transmissions (as of 24.7.2020, 10:00 pm) n=346



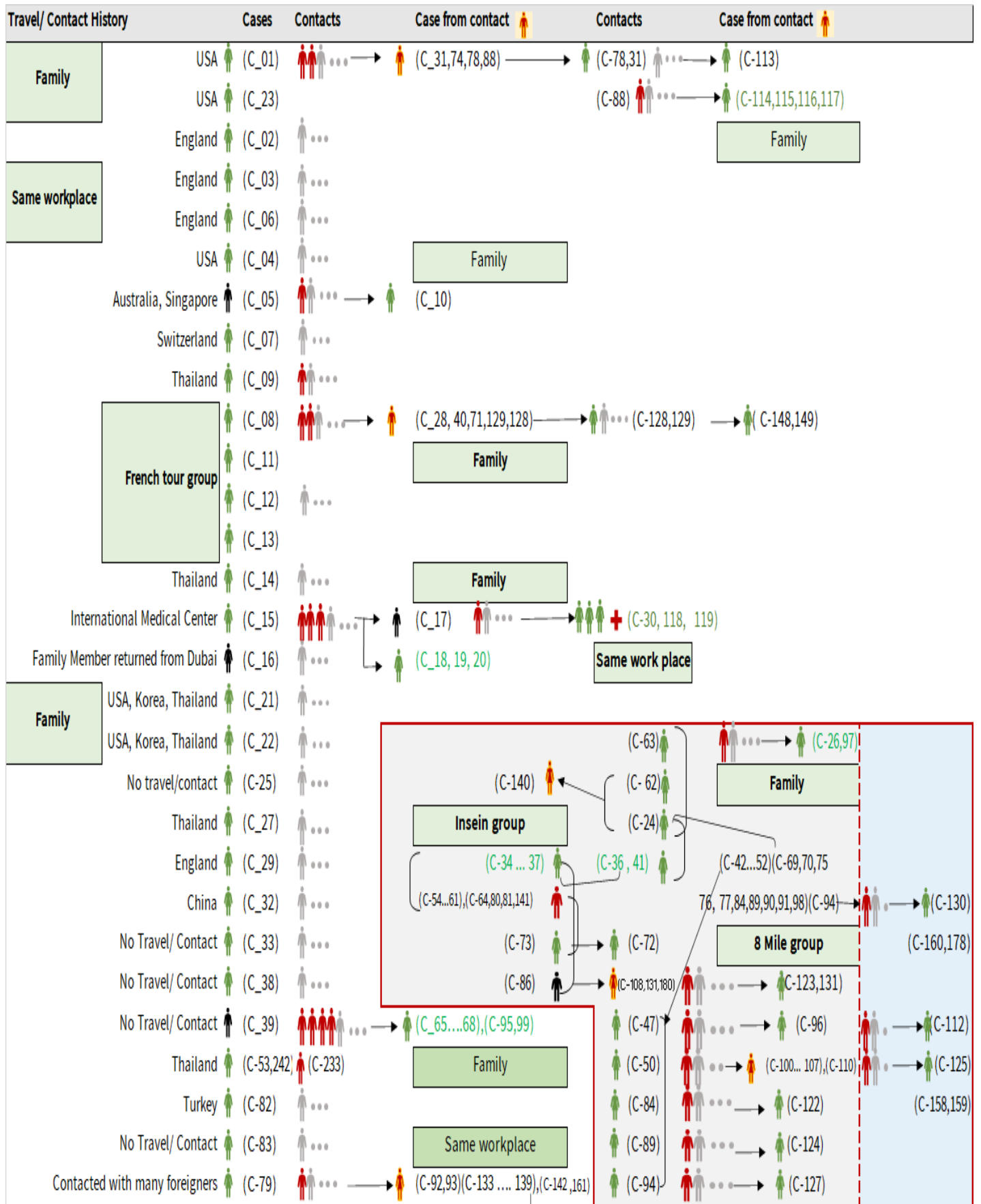
Total laboratory confirmed cases by date (as of 24.7.2020, 10:00 pm), n= 346



Cumulative Number of active confirmed cases, recovered and deaths (23.3.2020 – 24.7.2020), n (cumulative)=346



Summary of COVID-19 confirmed cases (as of 24.7.2020), n (contacts)= 5,774



Summary of COVID-19 confirmed cases (as of 24.7.2020), n (contacts)= 5,774

Travel/ Contact History	Cases	Contacts	Case from contact	Contacts	Case from contact
No Travel/ Contact	(C-85)	...			(C-110)
No travel / Contact	(C-87)	...	→ (C-126)		(C-28,40,42,43,44,45,46,48,49,51,52)
No travel / Contact	(C-109)	...	(C-139) →	(C-146)	(C-54,55,56,57,58,60,61,63,64,69,70)
No travel / Contact	(C-111)	...	(C-133,134,142) →	(C-147)	(C-71,74,75,76,77,80,81,88,90,91,92,93)
No travel/Contact	(C-120)	...			(C-98,100,101,102,103,104,105,106,107,108)
England	(C-317,327)	(C-121,302,303)			(C-133,134,135,136,137,138,139,140,141,142)
No travel/Contact	(C-132)	...			(C-151,152,153,154,157,158,159,160,161)
Dubai/Thailand	(C-143)	...			(C-164,165,167,168,170,171,172,174)
No travel/Contact	(C-144)	...			(C-178,184,189,191,193,205,207,216,217,218)
India	(C-145,204,209,210,212,213,215,220,221,223,224,229,225,227,228,252,255,259,296,299,305,306,307)				(C-226,233,234,235,237,246,253,258)
China	(C-150,230)			Household	
Contact with religious event cluster	(C-162)	...	→ (C-151,152,153,154,157)	→ (C-165 ... 177)	(C-166,169,173,175,176,177)
No travel/contact	(C-155)	...	→ (C-163,164)	(C-163)	(C-177) → (C-179) → (C-181)
No travel/contact	(C-156)	...			
No travel/contact	(C-183)	...			
Malaysia	(C-184,189,273,280)	(C-182,185,186,191,188,190,187,200,201,232,275,282)			
UAE	(C-300,301,315,316,337,340)	(C-193,192,194,195,196,197,198,199,301,314)			
Italy	(C-243,202)				
No travel/Contact	(C-231)				
Bangladesh	(C-234,244,247,250,262,308,309,310,325,326,334)	(C-244,245,247,248,250,262,291,292,293)			
No travel/contact	(C-245)	...			
No travel/contact	(C-249)				
No travel/contact	(C-263)	...			
Thailand	(C-269,279,332,333,335,336,338,346)	(C-264,265,266,267,268,270,271,272,273,274,276,277,278,280,281,283,284,285,286,287,294,304,312)			
Quata	(C-288)	(C-289,290)			
India	(C-203,205.....214,216...219,221.... 229,235....240,241,246,251,253,254...258,260,261,295,297,298,307,322,323,324,344,345)	(C-328,329,330)			
Lao	(C-311)	...			
Singapore	(C-313)	...			
Philippines	(C-319,320,321,342,343)	...			
USA	(C-331)	...			
No travel/contact	(C-339)	...			

Summary of current situation

Type	New (23.7.2020-24.7.2020)	Total (on 24.7.2020)
Suspected and Person Under Investigation (PUI)	29	170
Hospital Quarantine	7	49
Facility Quarantine	1,199	21,739

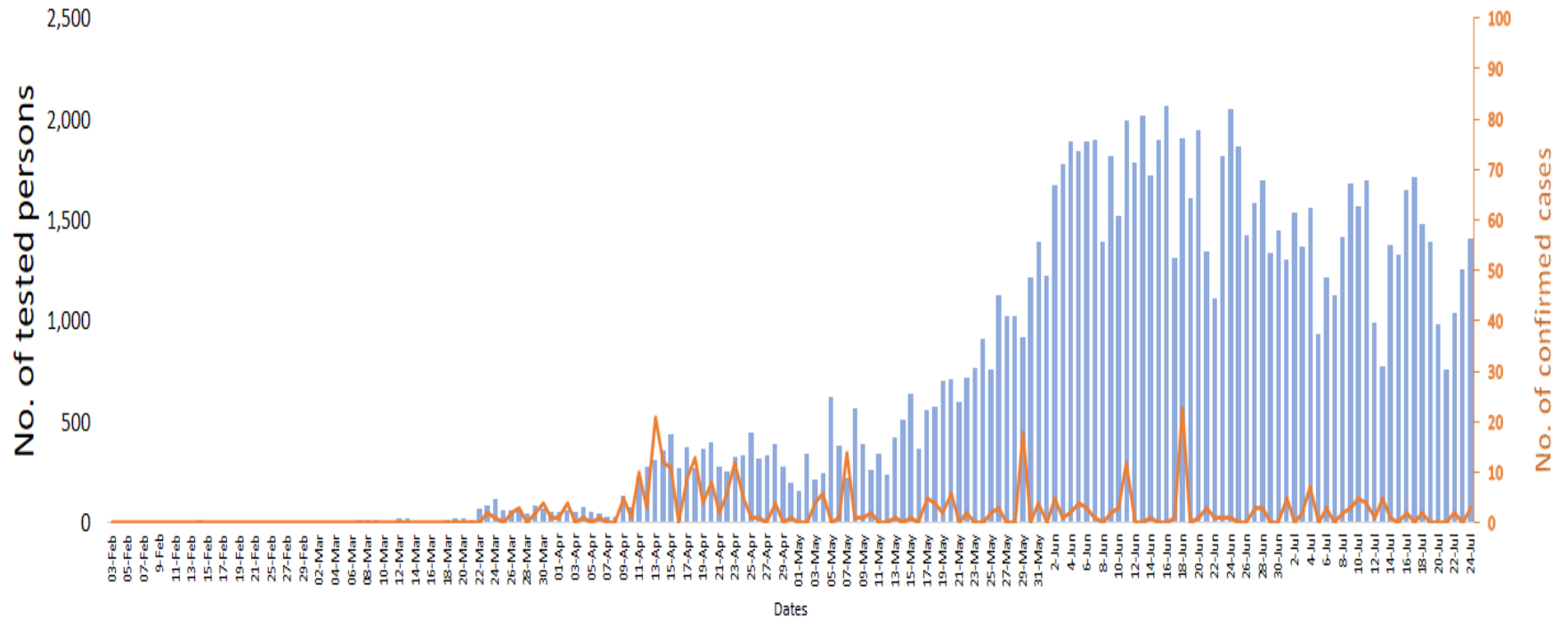
Person under Investigation (PUI) by State/Region hospitals (31.1.2020 – 24.7.2020) n= 6,658

No.	State/Region	PUI
1	Yangon	3351
2	Mandalay	1357
3	Kayin	289
4	Mon	269
5	Shan (N)	227
6	Magway	212
7	Bago	180
8	Shan (E)	123
9	Shan (S)	103
10	Ayeyarwaddy	102
11	Sagaing	90
12	Kayah	80
13	Thanintharyi	73
14	Rakhine	69
15	Naypyitaw	64
16	Kachin	40
17	Chin	29
Total		6,658

No. of Facility Quarantine sites and Quarantined people on 24.7.2020

No.	State/Region	No. of facilities	Total no. of quarantine
1	Yangon	63	3,268
2	Bago	259	2,980
3	Mon	319	2,896
4	Kayin	416	2,653
5	Tanintharyi	189	1,915
6	Magway	304	1,711
7	Sagaing	176	1,113
8	Mandalay	73	1,091
9	Rakhine	272	884
10	Ayeyarwaddy	167	792
11	Shan South	97	779
12	Kachin	424	687
13	Naypyitaw	2	397
14	Shan North	263	228
15	Kayah	18	144
16	Chin	15	141
17	Shan East	11	60
Total		3,068	21,739

COVID-19 confirmed cases among tested by date (as of 24.7.2020)

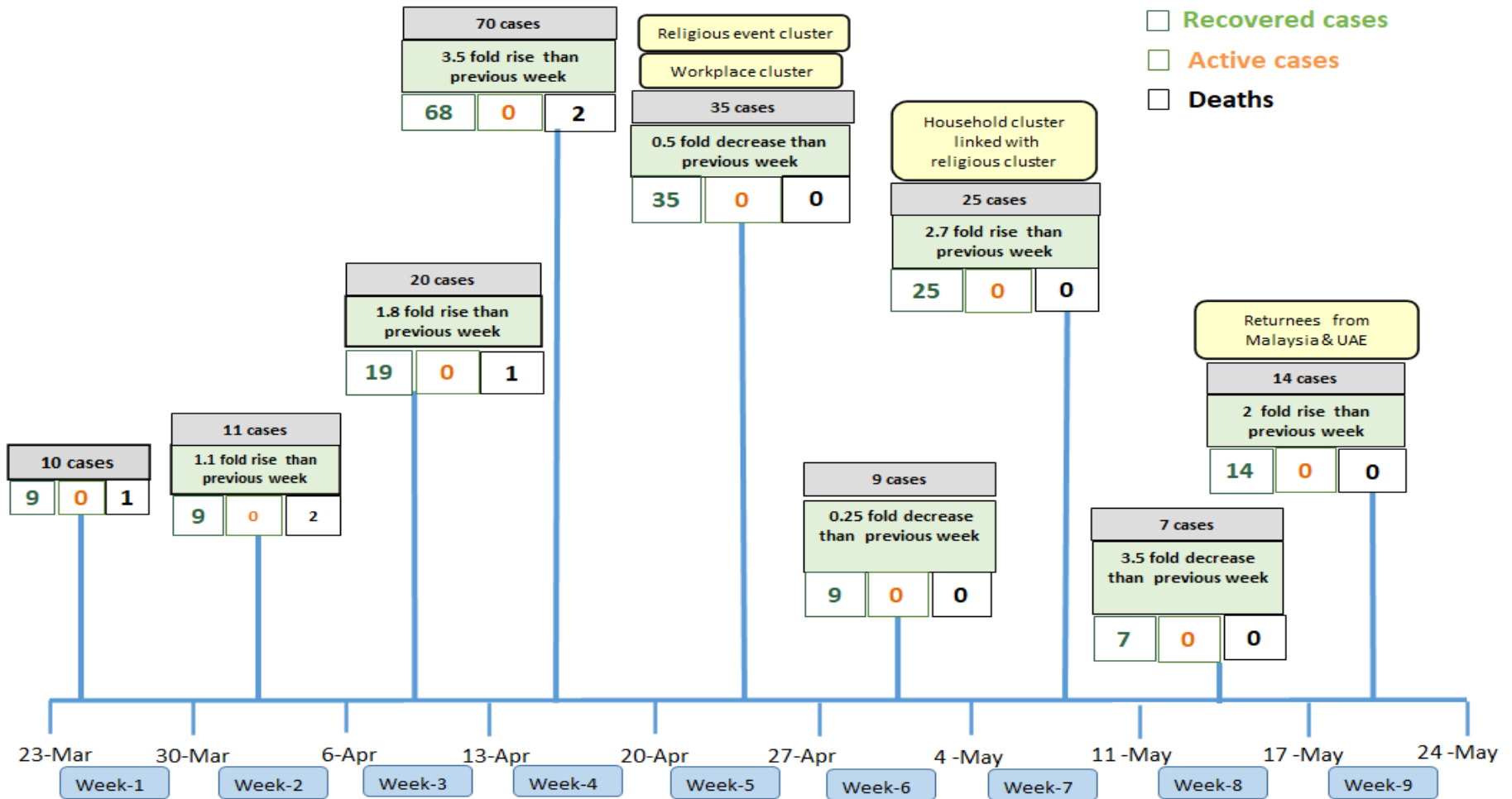


Total tested persons - 109,334

Total confirmed cases - 346

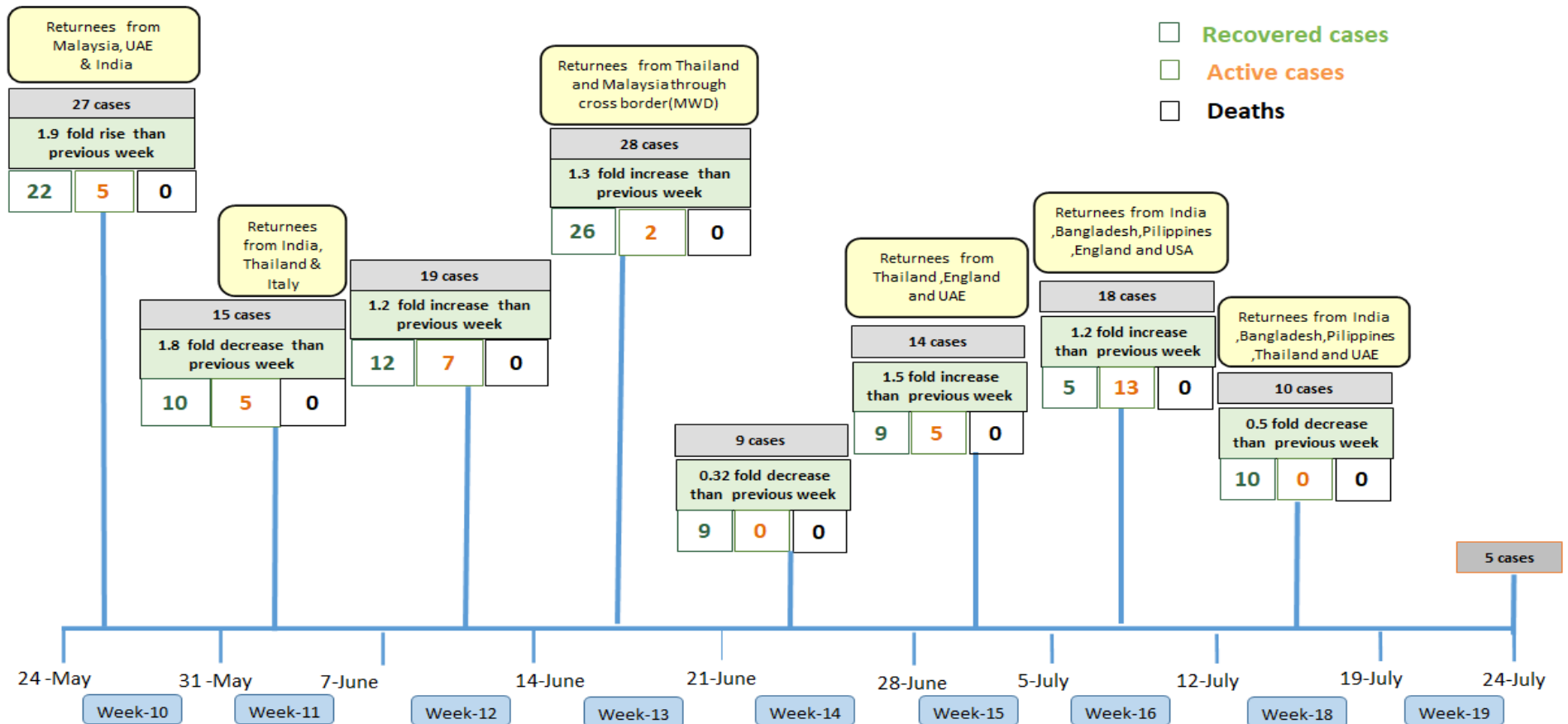
Tested person Confirmed case

Summary of new confirmed cases detection after first two cases (as of 24.7.2020)



- Confirmed cases were detected as a peak in the 4th week after first confirmed cases due to the religious event cluster.
- Confirmed cases were decreased but still raised than the first 3 weeks due to the religious event cluster and workplace cluster.
- There were an increased in numbers of cases in the 7th week after the first two cases due to the household cluster linked with a religious cluster.
- Confirmed cases were detected by a nearly two-fold rise in the 9th and 10th weeks after the first two cases because of returnees coming back by relief flights.

Summary of new confirmed cases detection after first two cases (as of 24.7.2020)



- Confirmed cases were detected as a peak in the 4th week after first confirmed cases due to the religious event cluster.
- Confirmed cases were decreased but still raised than the first 3 weeks due to the religious event cluster and workplace cluster.
- There were an increased in numbers of cases in the 7th week after the first two cases due to the household cluster linked with a religious cluster.
- Confirmed cases were detected by a nearly two-fold rise in the 9th and 10th weeks after the first two cases because of returnees coming back by relief flights.

Timeline of Preparedness and Response to COVID-19 in Myanmar (as of 24.7.2020)



Hotline Number — 0673 420 268

Data source - CEU, DMS, NHL, PHL (MDY and MLM), DMR, DSGH, State and Region Health Departments