



Ministry of Health and Sports (Myanmar)

Department of Public Health

Central Epidemiology Unit

(17 July 2020)

Situation Report - 101

Coronavirus Disease 2019 (COVID-19)

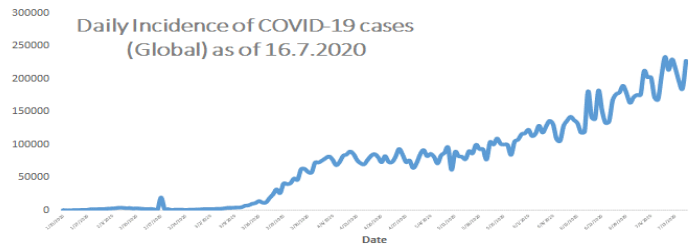
Data as reported by States and Regions by 9:00 PM MST 16 July 2020

Global Situation (WHO situation report - 178) data as of 14:30 MST 16 July 2020

Confirmed cases
13,378,853

Deaths
580,045

Case Fatality Rate
4.3 %



Myanmar Situation

Total Tested

99,302

Confirmed Cases

339

Negative

98,963

Recovered

271

79.9% of Confirmed cases

Active

62

18.2% of Confirmed cases

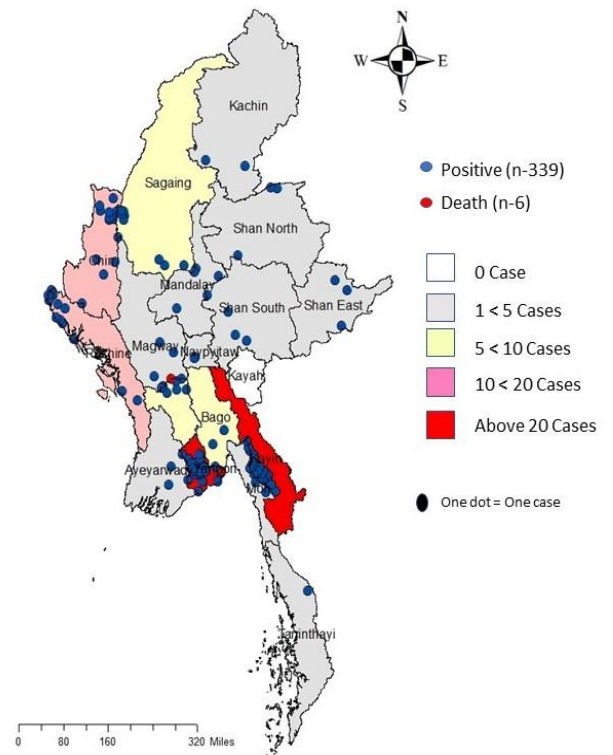
Death

6

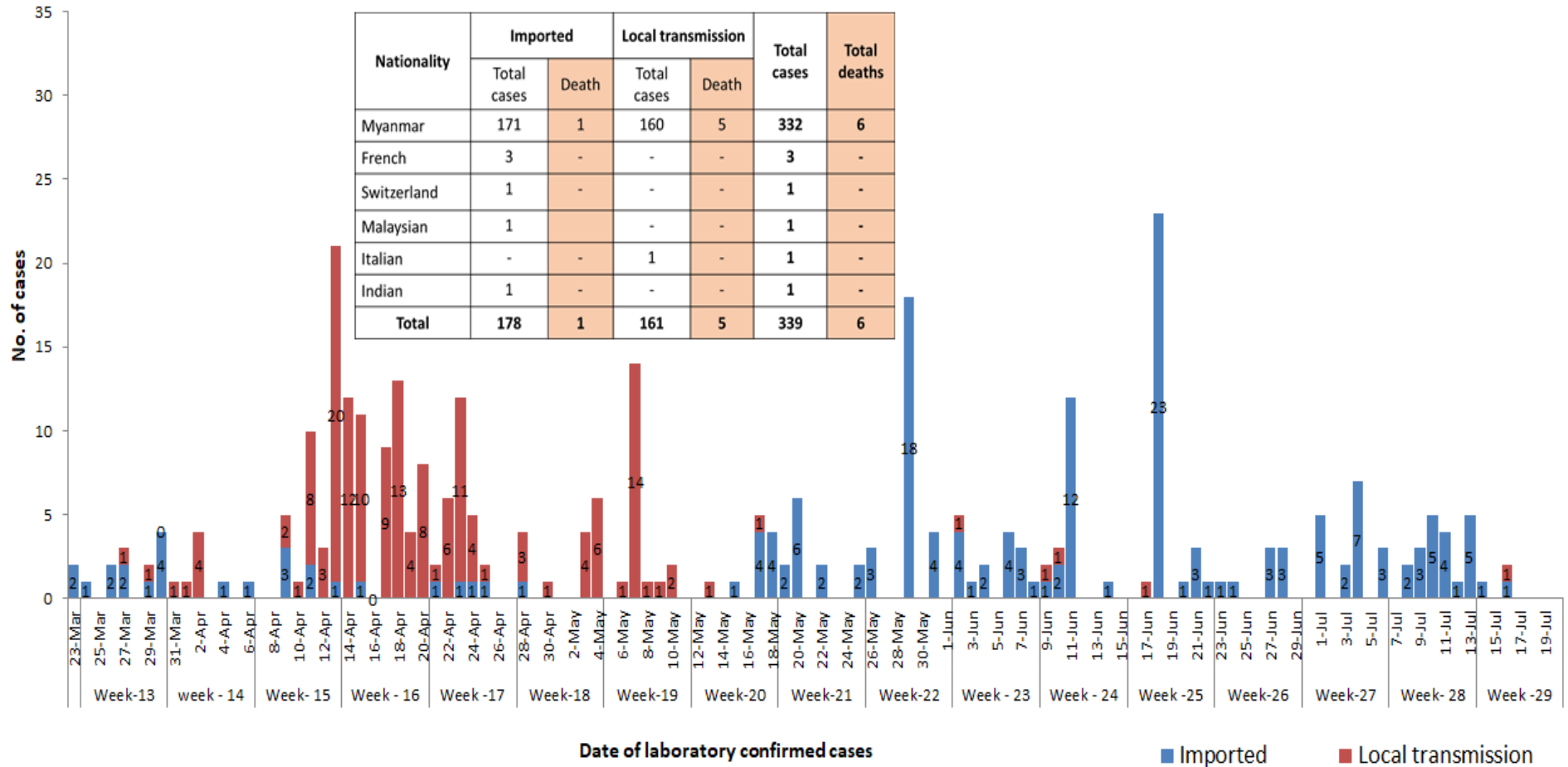
1.7% of Confirmed cases

No	State/Region	COVID-19 Confirmed case	Recovered	Deaths
1	Yangon	243	186(4 New)	5
2	Kayah	26	24(1 New)	-
3	Rakhine	15(1 New)	10	-
4	Chin	11	10	-
5	Sagaing	9	8	-
6	Bago	9	8	1
7	Shan (South)	4	4	-
8	Mandalay	4(1 New)	3	-
9	Shan (East)	3	3	-
10	Shan (North)	3	3	-
11	Magway	3	3	-
12	Naypyitaw	2	2	-
13	Ayeyarwaddy	2	2	-
14	Kachin	2	2	-
15	Mon	2	2	-
16	Thanintharyi	1	1	-
17	Kayah	-	-	-
Total		339(2 New)	271(5 New)	6

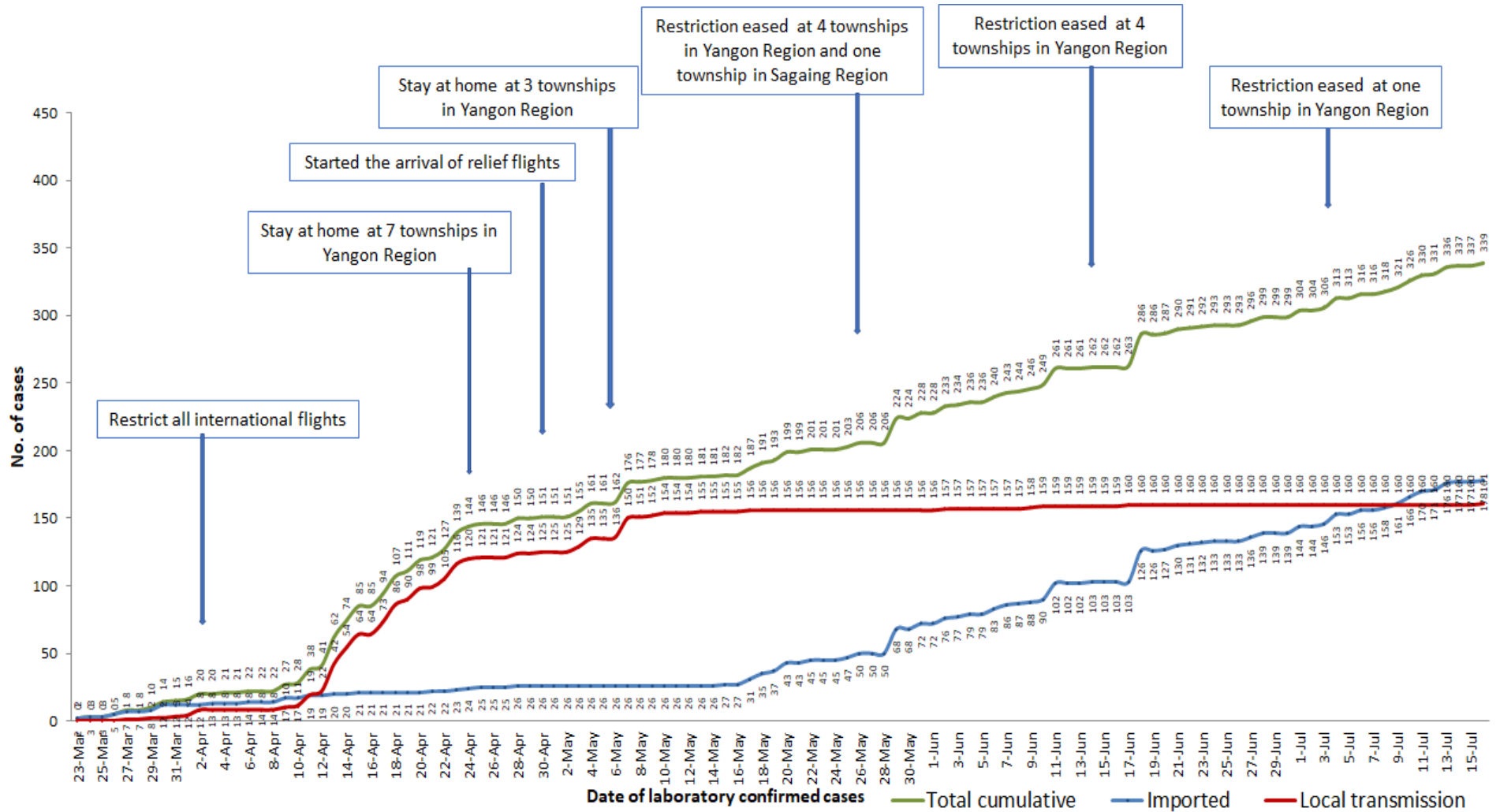
Map showing COVID-19 laboratory confirmed cases



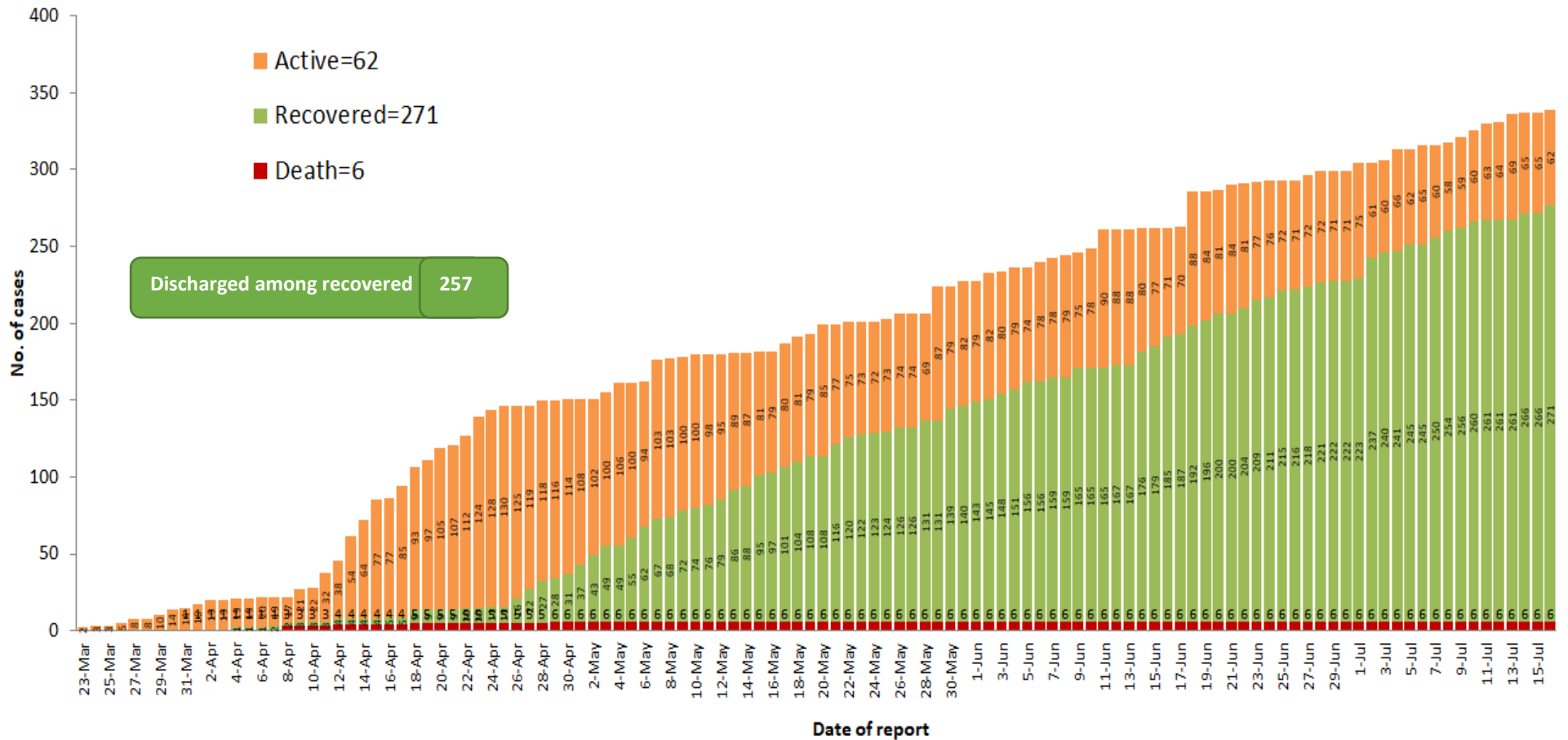
COVID-19 confirmed cases by types of transmissions (as of 16.7.2020, 9:00 pm) n=339



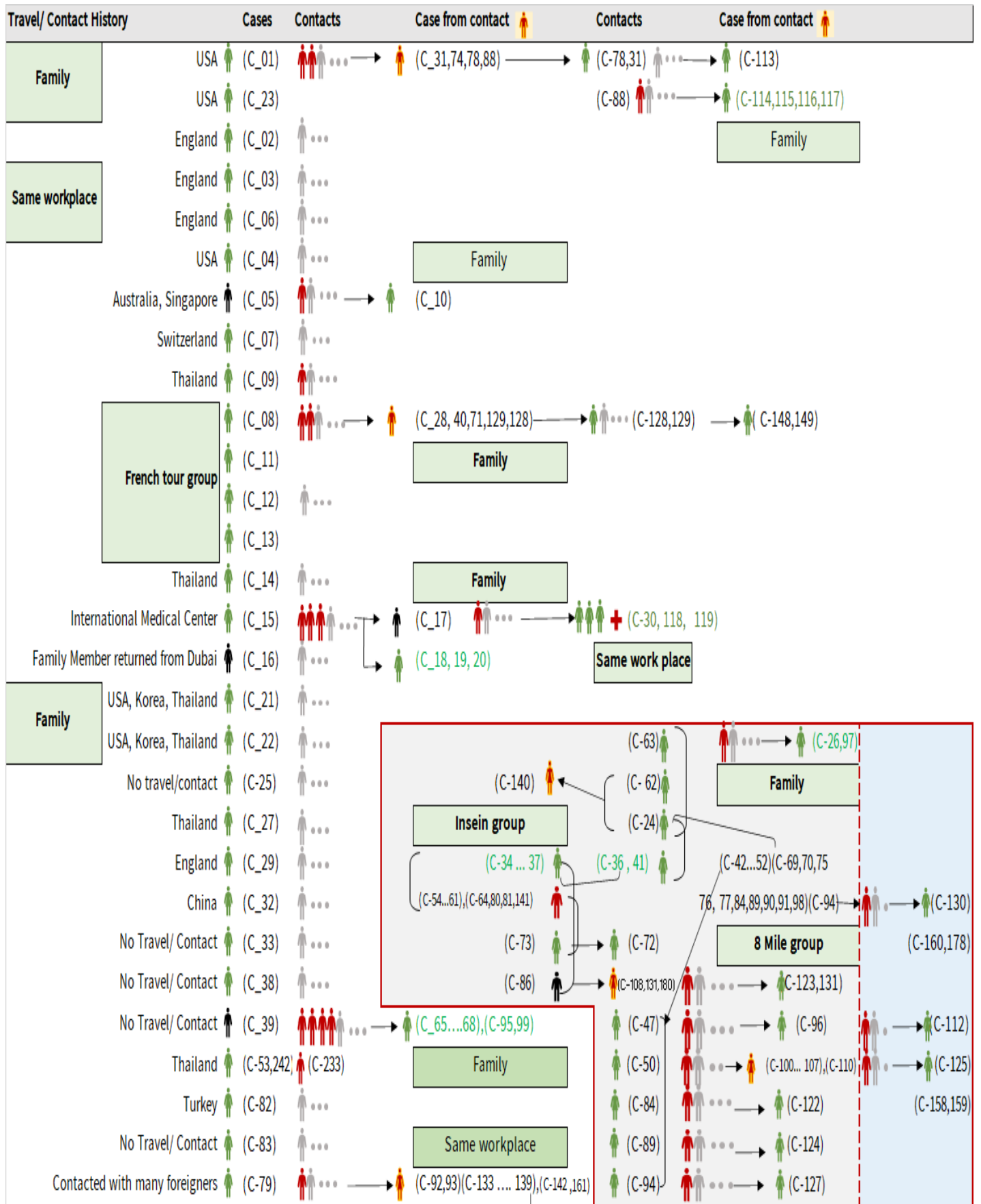
Total laboratory confirmed cases by date (as of 16.7.2020, 9:00 pm), n= 339



Cumulative Number of active confirmed cases, recovered and deaths (23.3.2020 – 16.7.2020), n (cumulative)=339



Summary of COVID-19 confirmed cases (as of 16.7.2020), n (contacts)= 5,748



Summary of COVID-19 confirmed cases (as of 16.7.2020), n (contacts)= 5,748

Travel/ Contact History	Cases	Contacts	Case from contact	Contacts	Case from contact
No Travel/ Contact	(C-85)	...			(C-110)
No travel / Contact	(C-87)	... → (C-126)			(C-28,40,42,43,44,45,46,48,49,51,52)
No travel / Contact	(C-109)	...	(C-139) ... → (C-146)		(C-54,55,56,57,58,60,61,63,64,69,70)
No travel / Contact	(C-111)	...	(C-133,134,142) ... → (C-147)		(C-71,74,75,76,77,80,81,88,90,91,92,93)
No travel/Contact	(C- 120)	...			(C-98,100,101,102,103,104,105,106,107,108)
England	(C-303,317,327) (C-121,302)				(C- 133,134,135,136,137,138,139,140,141,142)
No travel/Contact	(C-132)	...			(C-151,152,153,154,157,158,159,160,161)
Dubai/Thailand	(C-143)	...			(C-164,165,167,168,170,171,172,174)
No travel/Contact	(C-144)	...			(C-178,184,189,191,193,205,207,216,217,218)
India	(C- 145,209,210,213,221,223,224,229,225,227,228,252,255,259,295,296,297,298,299,307)				(C-226,233,234,235,237,246,253,258)
China	(C-150,230)				
Contact with religious event cluster	(C- 162)	... → (C-151,152,153,154,157) → (C-165 ... 177) (C-166,169,173,175,176,177)			
No travel/contact	(C-155)	... → (C-163,164) (163) → (C-177) ... → (C-179) ... → (C-181)			
No travel/contact	(C-156)	...			
No travel/contact	(C- 183)	...			
Malaysia	(C-184,189,273,280) (C-182,185,186,191,188,190,187,200,201,232,275,282)				
UAE	(C-300,301,314,315,316,337) (C-193,192,194,195,196,197,198,199,301)				
Italy	(C-243,202)				
No travel/Contact	(C- 231)				
Bangladesh	(C-234,244,247,250,262,293,308,309,310,325,326,334) (C-244,245,247,248,250,262,291,292)				
No travel/contact	(C-245)	...			
No travel/contact	(C-249)				
No travel/contact	(C-263)	...			
Thailand	(C-269,279,312,332,333,335,336,338) (C-264,265,266,267,268,270,271,272,273,274,276,277,278,280,281,283,284,285,286,287,294,304)				
Quata	(C-288) (C-289,290)				
India	(C-203... 229,235...240,241,246,251,253,254...258,260,261,305,306,318,322,323,324,328,329,330)				
Lao	(C-311)	...			
Singapore	(C-313)	...			
Philippines	(C-319,320,321) ...				
USA	(C-331)	...			
No travel/contact	(C-339)	...			

Summary of current situation

Type	New (15.7.2020-16.7.2020)	Total (on 16.7.2020)
Suspected and Person Under Investigation (PUI)	26	193
Hospital Quarantine	10	63
Facility Quarantine	989	22,813

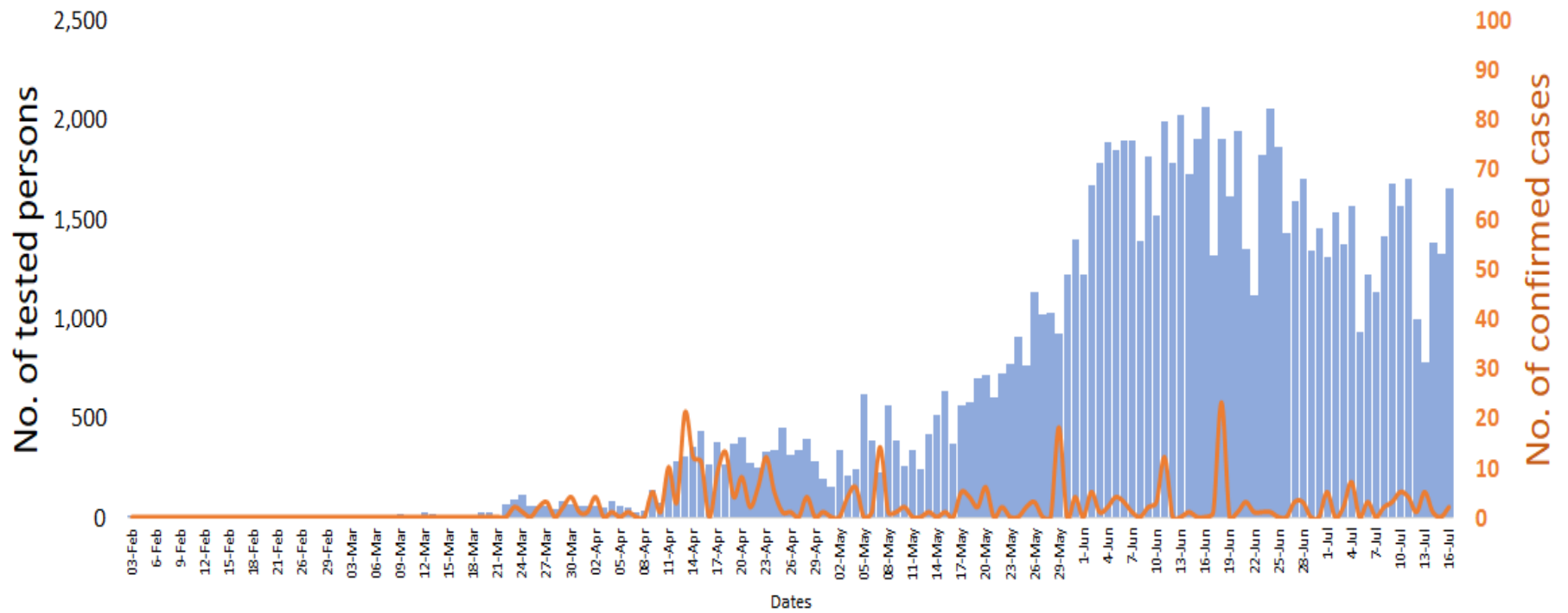
Person under Investigation (PUI) by State/Region hospitals (31.1.2020 – 16.7.2020) n= 6,455

No.	State/Region	PUI
1	Yangon	3,265
2	Mandalay	1,297
3	Kayin	270
4	Mon	259
5	Shan (N)	218
6	Magway	210
7	Bago	180
8	Shan (E)	121
9	Ayeyarwaddy	102
10	Shan (S)	99
11	Sagaing	90
12	Kayah	80
13	Thanintharyi	70
14	Rakhine	68
15	Naypyitaw	63
16	Kachin	36
17	Chin	27
Total		6,455

No. of Facility Quarantine sites and Quarantined people on 16.7.2020

No.	State/Region	No. of facilities	Total no. of quarantine
1	Yangon	64	3,915
2	Bago	267	3,222
3	Kayin	346	2,715
4	Mon	287	2,667
5	Magway	307	1,856
6	Tanintharyi	189	1,539
7	Mandalay	101	1,199
8	Sagaing	185	1,193
9	Rakhine	267	926
10	Shan South	116	916
11	Kachin	420	856
12	Ayeyarwaddy	165	811
13	Naypyitaw	3	436
14	Shan North	255	191
15	Chin	15	156
16	Kayah	18	135
17	Shan East	11	80
Total		3,016	22,813

COVID-19 confirmed cases among tested by date (as of 16.7.2020)



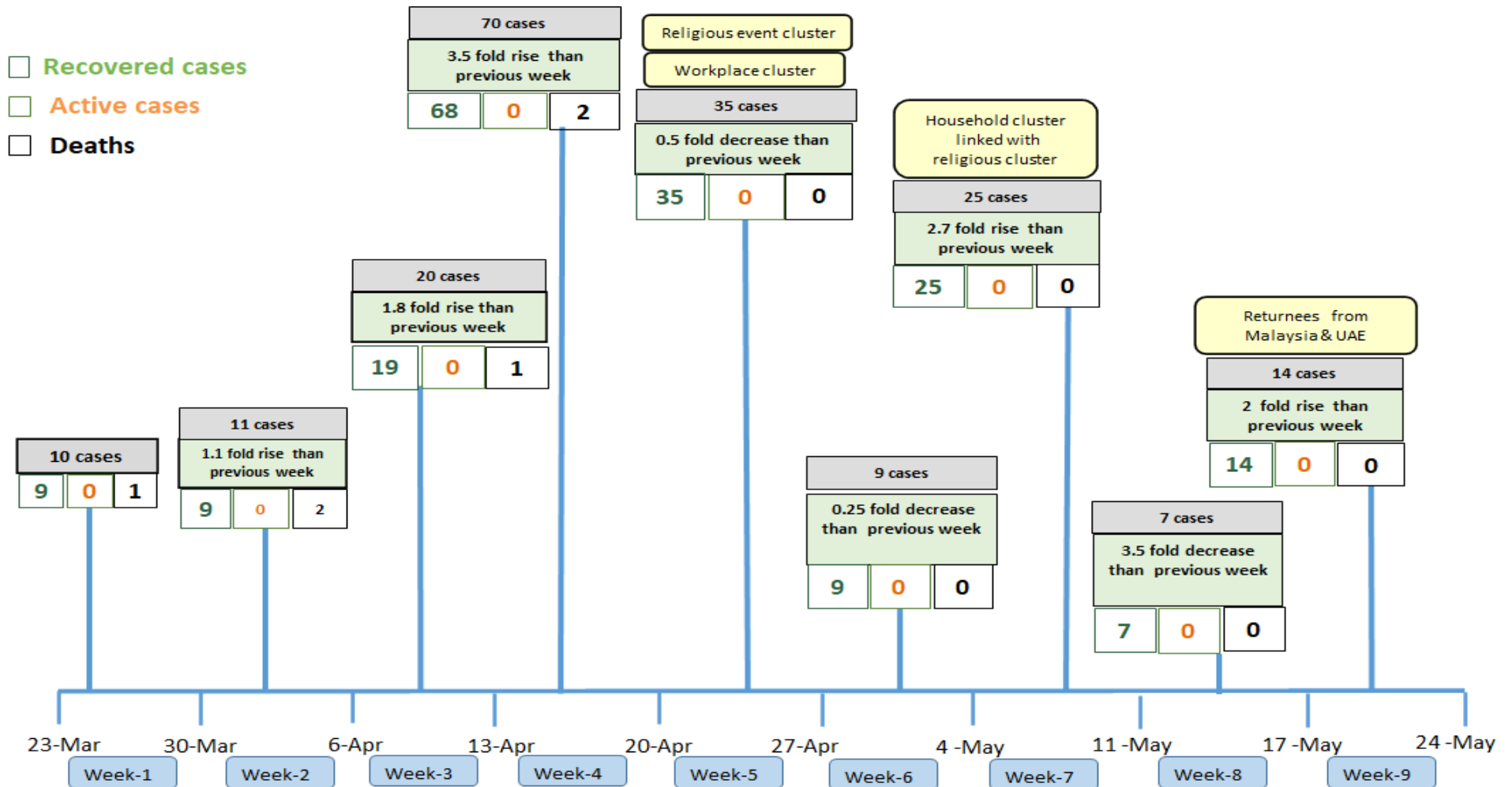
Total tested persons - 99,302

Total confirmed cases - 339

Tested person

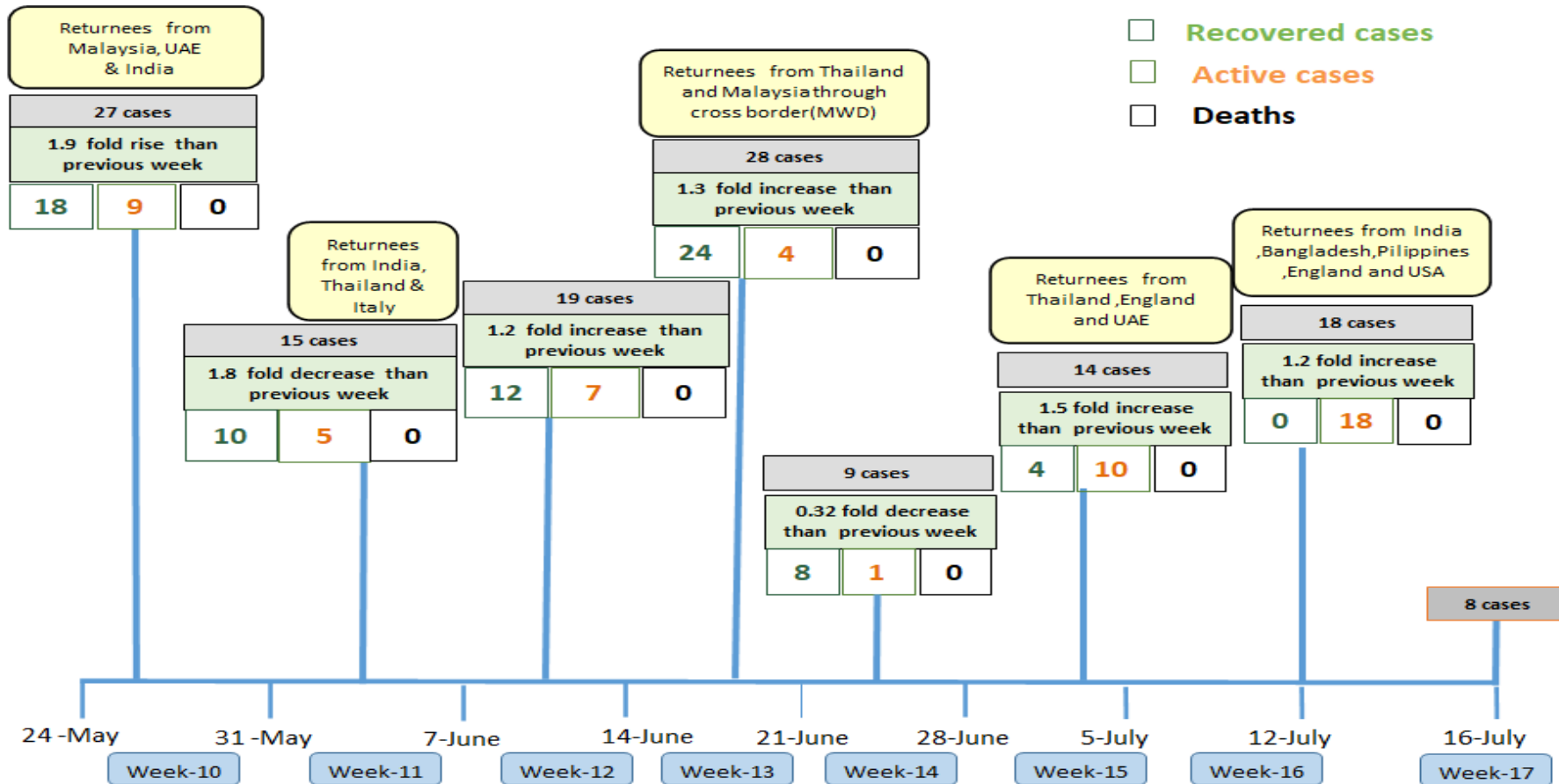
Confirmed case

Summary of new confirmed cases detection after first two cases (as of 16.7.2020)



- Confirmed cases were detected as a peak in the 4th week after first confirmed cases due to the religious event cluster.
- Confirmed cases were decreased but still raised than the first 3 weeks due to the religious event cluster and workplace cluster.
- There were an increased in numbers of cases in the 7th week after the first two cases due to the household cluster linked with a religious cluster.
- Confirmed cases were detected by a nearly two-fold rise in the 9th and 10th weeks after the first two cases because of returnees coming back by relief flights.

Summary of new confirmed cases detection after first two cases (as of 16.7.2020)



- Confirmed cases were detected as a peak in the 4th week after first confirmed cases due to the religious event cluster.
- Confirmed cases were decreased but still raised than the first 3 weeks due to the religious event cluster and workplace cluster.
- There were an increased in numbers of cases in the 7th week after the first two cases due to the household cluster linked with a religious cluster.
- Confirmed cases were detected by a nearly two-fold rise in the 9th and 10th weeks after the first two cases because of returnees coming back by relief flights.

Timeline of Preparedness and Response to COVID-19 in Myanmar (as of 16.7.2020)

