



Ministry of Health and Sports (Myanmar)

Department of Public Health

Central Epidemiology Unit

(14 August 2020)

Coronavirus Disease 2019 (COVID-19)

Situation Report - 129

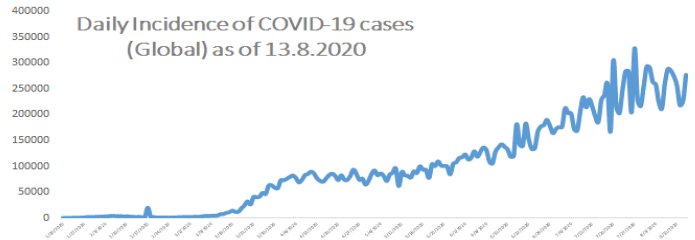
Data as reported by States and Regions by 8:30 PM MST 13 August 2020

Global Situation (WHO situation report - 206) data as of 14:30 MST 13 August 2020

Confirmed cases
20,439,814

Deaths
744,385

Case Fatality Rate
3.6 %



Myanmar Situation

Total Tested

132,299

Confirmed Cases

369

Negative

131,930

Recovered

322

87.3% of Confirmed cases

Active

41

11.1% of Confirmed cases

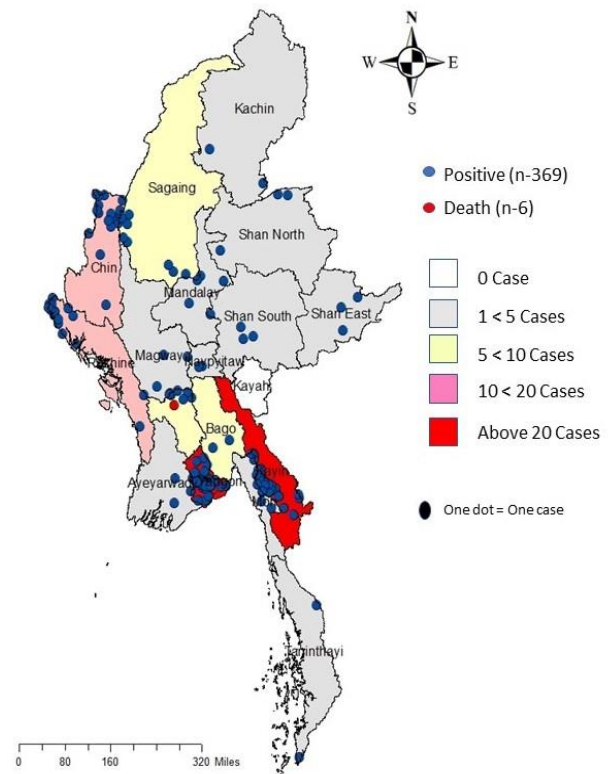
Death

6

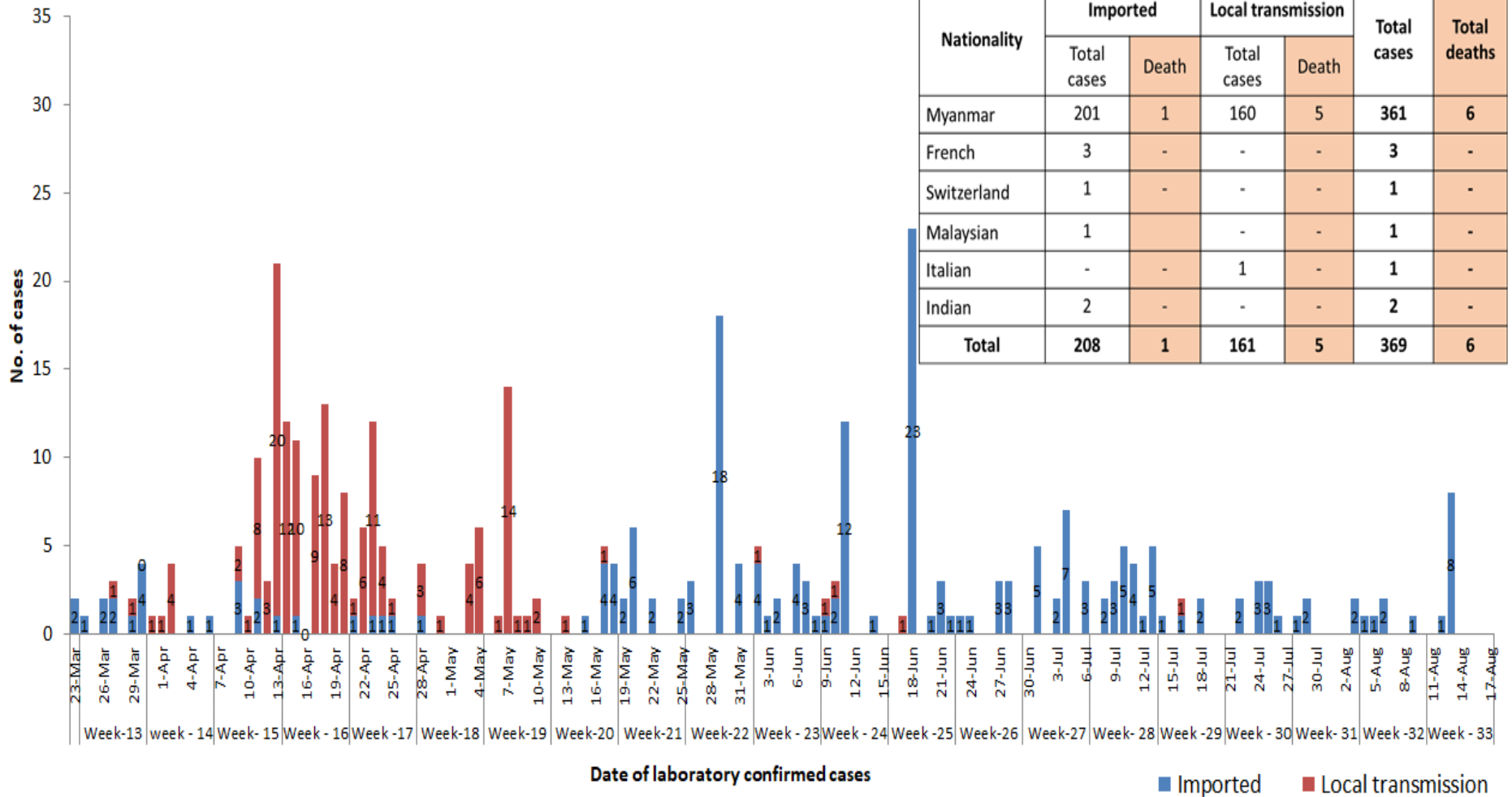
1.6% of Confirmed cases

No	State/Region	COVID –19 Confirmed case	Recovered	Deaths
1	Yangon	262(8 New)	220	5
2	Kayin	29	29	-
3	Chin	17	13	-
4	Rakhine	16	16	-
5	Sagaing	9	9	-
6	Bago	9	8	1
7	Shan (South)	4	4	-
8	Mandalay	4	4	-
9	Shan (East)	3	3	-
10	Shan (North)	3	3	-
11	Magway	3	3	-
12	Naypyitaw	2	2	-
13	Ayeyarwaddy	2	2	-
14	Kachin	2	2	-
15	Mon	2	2	-
16	Thanintharyi	2	2(1 New)	-
17	Kayah	-	-	-
Total		369(8 New)	322(1 New)	6

Map showing COVID-19 laboratory confirmed cases

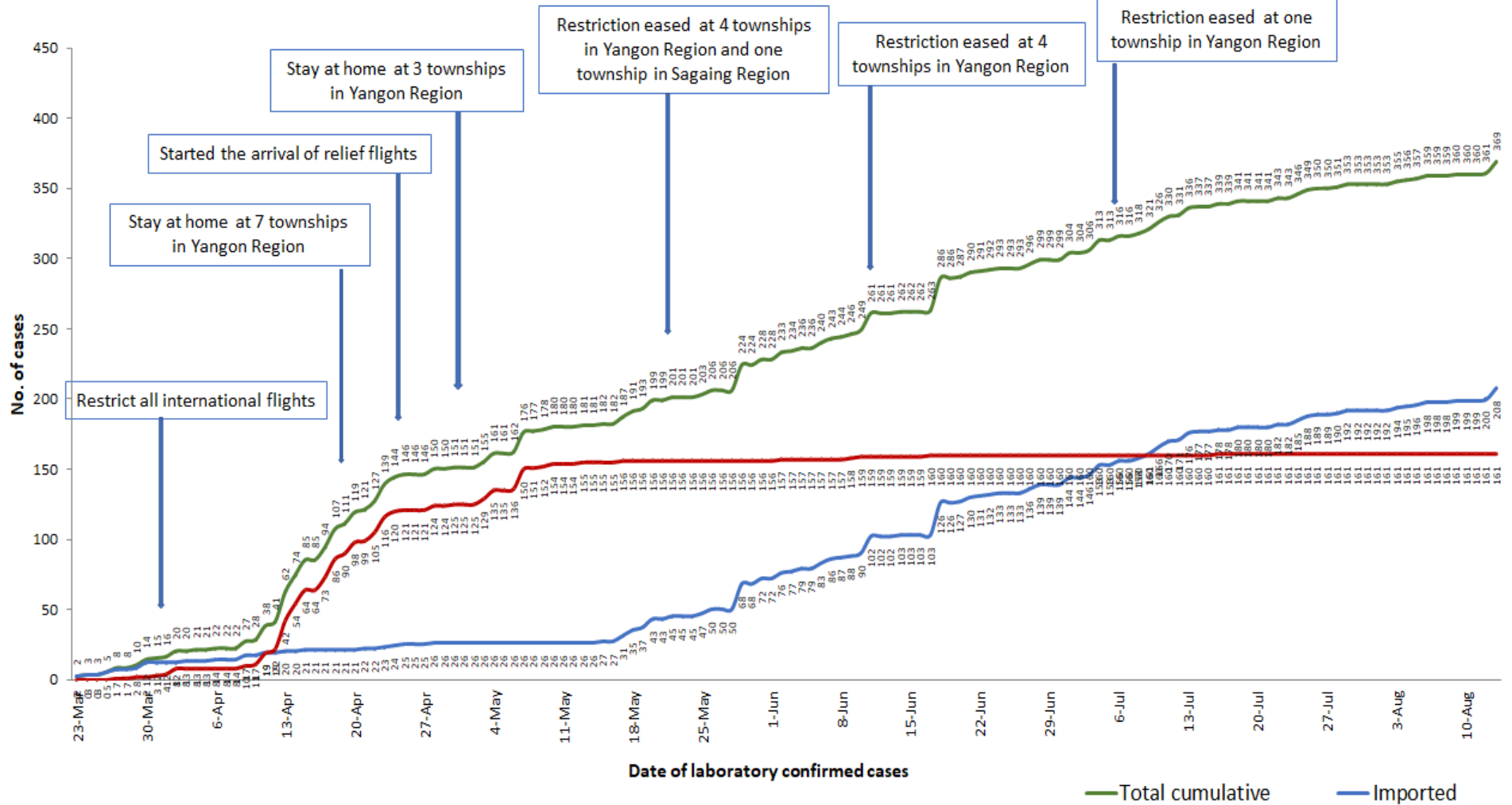


COVID-19 confirmed cases by types of transmissions (as of 13.8.2020, 8:30 pm) n=369



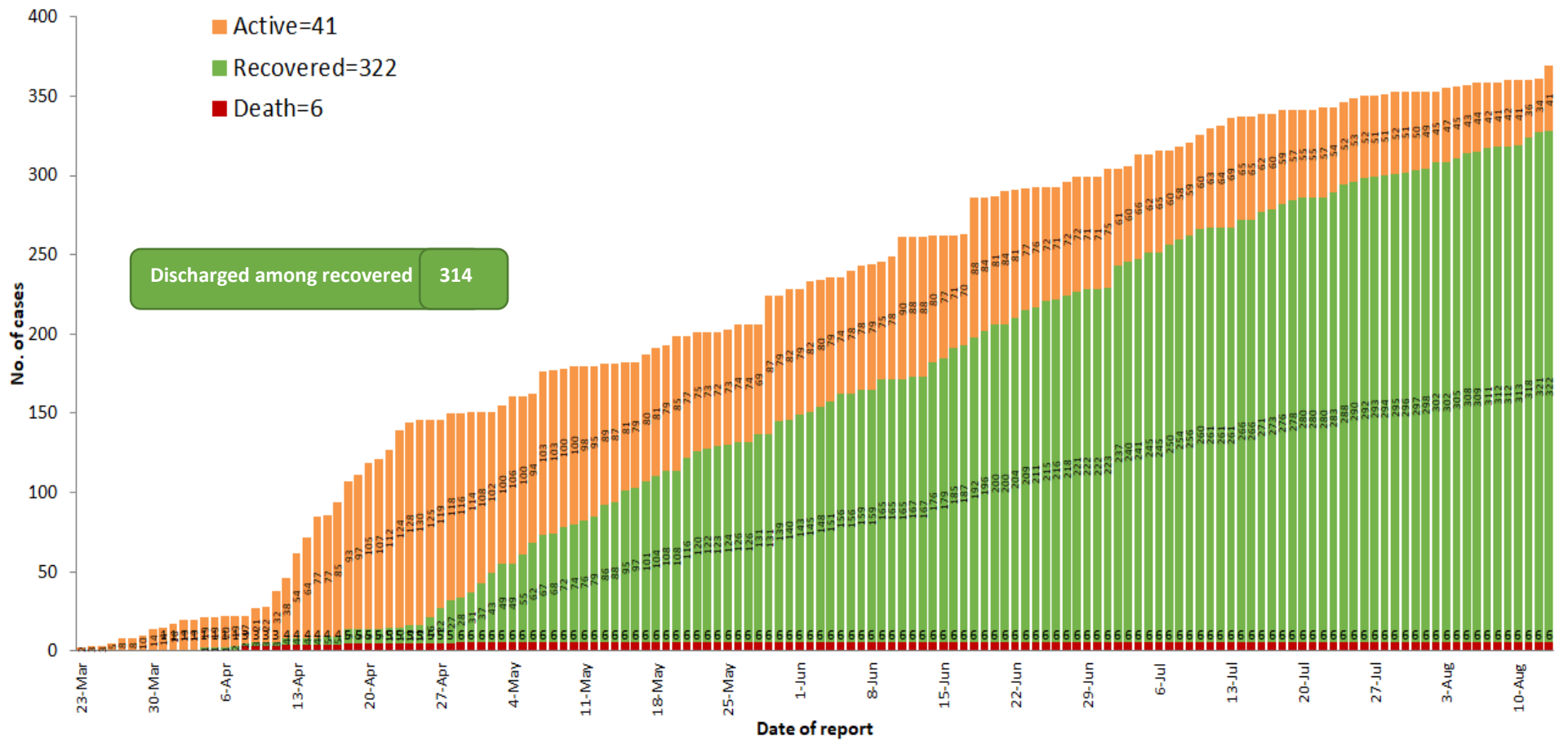
Nationality	Imported		Local transmission		Total cases	Total deaths
	Total cases	Death	Total cases	Death		
Myanmar	201	1	160	5	361	6
French	3	-	-	-	3	-
Switzerland	1	-	-	-	1	-
Malaysian	1	-	-	-	1	-
Italian	-	-	1	-	1	-
Indian	2	-	-	-	2	-
Total	208	1	161	5	369	6

Total laboratory confirmed cases by date (as of 13.8.2020, 8:30 pm), n= 369

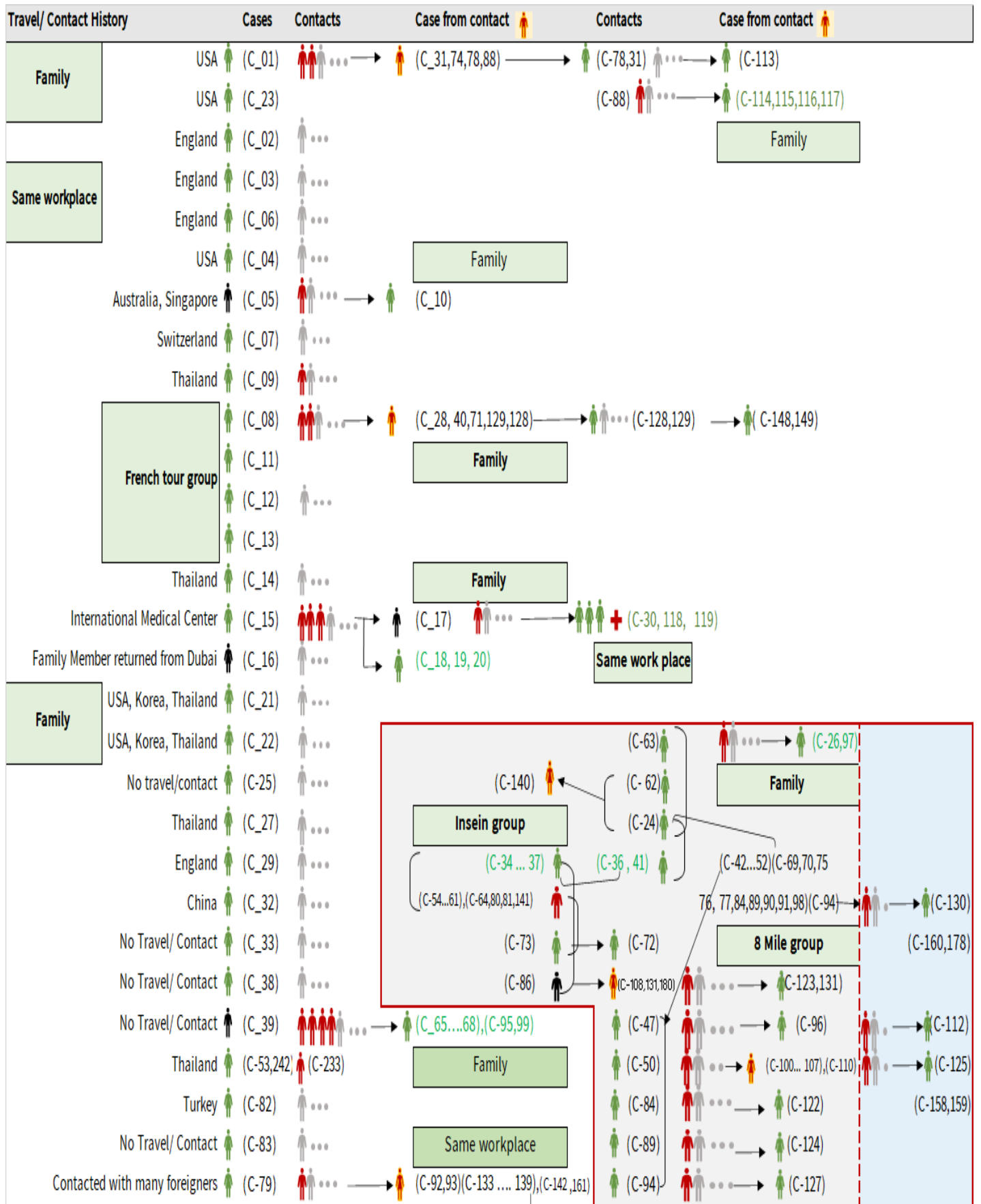


— Total cumulative — Imported

Cumulative Number of active confirmed cases, recovered and deaths (23.3.2020 – 13.8.2020), n (cumulative)=369



Summary of COVID-19 confirmed cases (as of 13.8.2020), n (contacts)= 5,789



Summary of COVID-19 confirmed cases (as of 13.8.2020), n (contacts)= 5,789

Travel/ Contact History	Cases	Contacts	Case from contact	Contacts	Case from contact
No Travel/ Contact	(C-85)	...			(C-110)
No travel / Contact	(C-87)	... → (C-126)			(C-28,40,42,43,44,45,46,48,49,51,52)
No travel / Contact	(C-109)	...	(C-139) ... → (C-146)		(C-54,55,56,57,58,60,61,63,64,69,70)
No travel / Contact	(C-111)	...	(C-133,134,142) ... → (C-147)		(C-71,74,75,76,77,80,81,88,90,91,92,93)
No travel/Contact	(C- 120)	...			(C-98,100,101,102,103,104,105,106,107,108)
England	(C-327,121,302,303,317)				C- 133,134,135,136,137,138,139,140,141,142)
No travel/Contact	(C-132)	...			(C-151,152,153,154,157,158,159,160,161)
Dubai/Thailand	(C-143)	...			(C-164,165,167,168,170,171,172,174)
No travel/Contact	(C-144)	...			(C-178,184,189,191,193,205,207,216,217,218)
India	(C- 145,204,208,209,210,211,212,213,215,220,221,223,224,229,225,227,228,252,255,259,296)				(C-226,233,234,235,237,246,253,258,306,318)
China	(C-150,230)			Household	
Contact with religious event cluster	(C- 162)	... → (C-151,152,153,154,157) → (C-165 177) (C-166,169,173,175,176,177)			
No travel/contact	(C-155)	... → (C-163,164) (163) → (C-177) ... → (C-179) ... → (C-181)			
No travel/contact	(C-156)	...			
No travel/contact	(C- 183)	...			
Malaysia	(C-184,189,273,280)		(C-182,185,186,191,188,190,187,200,201,232,275,282,351,353)		
UAE	(C-301,315,316,337,364,365,366,367,368,369)		(C-193,192,194,195,196,197,198,199,300,301,314,340)		
Italy	(C-243,202)				
No travel/Contact	(C- 231)				
Bangladesh	(C-234,244,247,250,262,310,334)	(C-244,245,247,248,250,262,291,292,293,308,309,325,326,348)			
No travel/contact	(C-245)	...			
No travel/contact	(C-249)				
No travel/contact	(C-263)	...			
Thailand	(C-332,333,335)	(C-264,265,266,267,268,269,270,271,272,273,274,276,277,278,279,280,281,283,284,285,286,287,294,304,312,336,338,346,349,352)			
Quata	(C-288,354,355)	(C-289,290)			
India	(C-205.....214,216...219,222.... 229,....241,246,253...258,260,295,297,298,307,322,323,324,345,357,358,359,361)	(C-203,240,251,254,256,328,329,3			
Lao	(C-311)	...			
Singapore	(C-313)	...			
Philippines	(C-319,321)	(C-320,342,343)			
USA	(C-347)	(C-331,350,360)			
No travel/contact	(C-339)	...			
Sudan	(C-356)				
India	(C-261,299,305,341,344)				
Japan	(C-362,363)				

Summary of current situation

Type	New (12.8.2020-13.8.2020)	Total (on 13.8.2020)
Suspected and Person Under Investigation (PUI)	18	129
Hospital Quarantine	3	33
Facility Quarantine	911	19,669

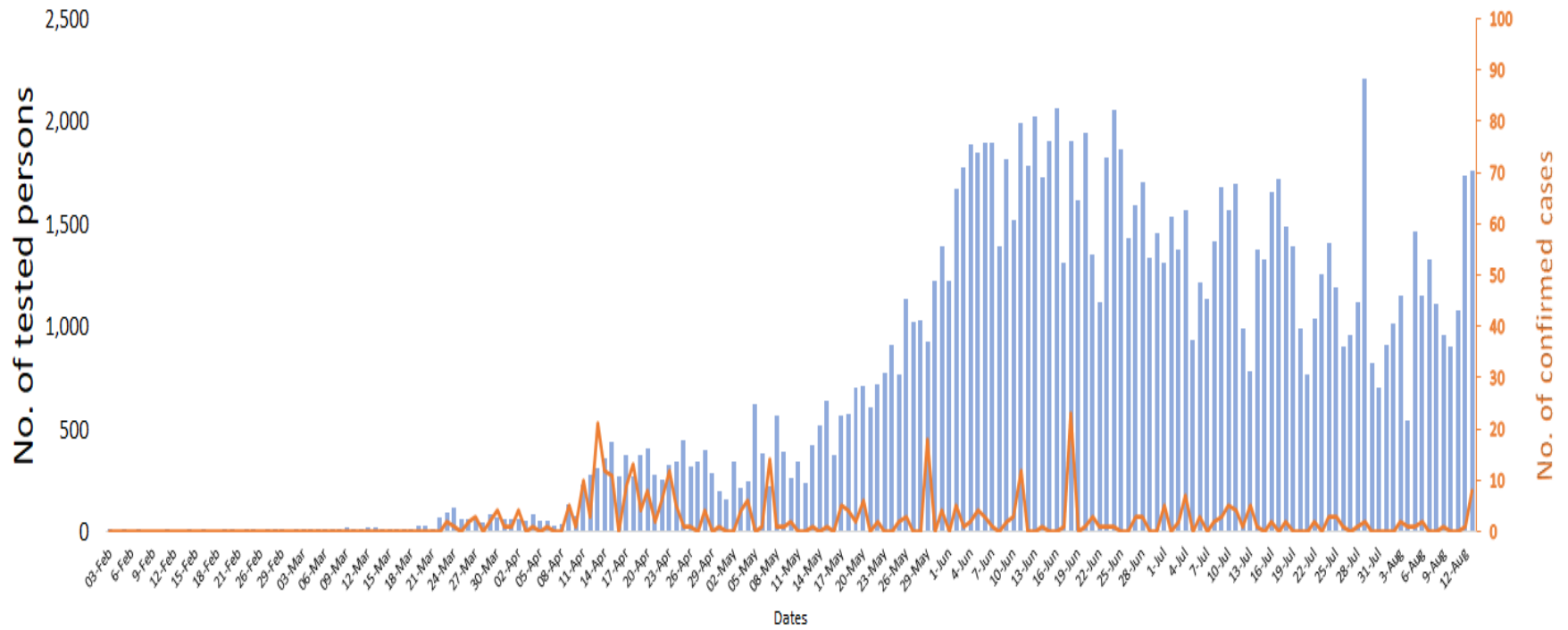
Person under Investigation (PUI) by State/Region hospitals (31.1.2020 – 13.8.2020) n= 7,018

No.	State/Region	PUI
1	Yangon	3503
2	Mandalay	1459
3	Kayin	324
4	Mon	287
5	Shan(N)	251
6	Magway	222
7	Bago	181
8	Shan (E)	129
9	Shan(S)	105
10	Ayeyarwaddy	102
11	Sagaing	90
12	Kayah	81
13	Thanintharyi	77
14	Rakhine	69
15	Naypyitaw	65
16	Kachin	43
17	Chin	30
Total		7,018

No. of Facility Quarantine sites and Quarantined people on 13.8.2020

No.	State/Region	No. of facilities	Total no. of quarantine
1	Yangon	66	4039
2	Mon	224	2734
3	Bago	198	2568
4	Kayin	367	2523
5	Tanintharyi	189	1613
6	Magway	407	1216
7	Mandalay	67	1015
8	Sagaing	169	879
9	Shan South	79	674
10	Rakhine	231	665
11	Ayeyarwaddy	108	662
12	Kachin	111	436
13	Naypyitaw	2	336
14	Shan North	263	122
15	Kayah	18	87
16	Chin	19	56
17	Shan East	7	44
Total		2,525	19,669

COVID-19 confirmed cases among tested by date (as of 13.8.2020)

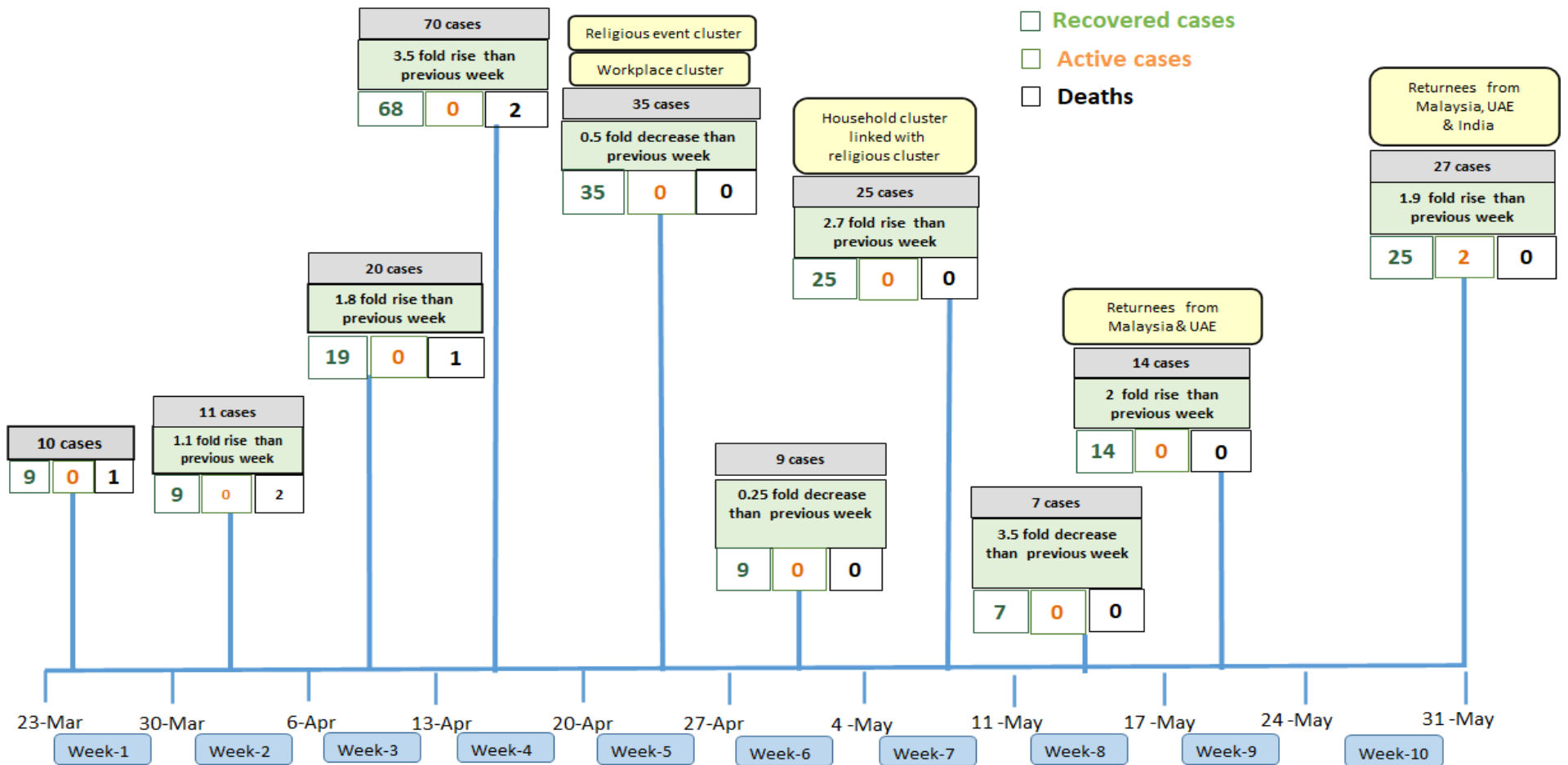


Total tested persons - 132,299

Total confirmed cases - 369

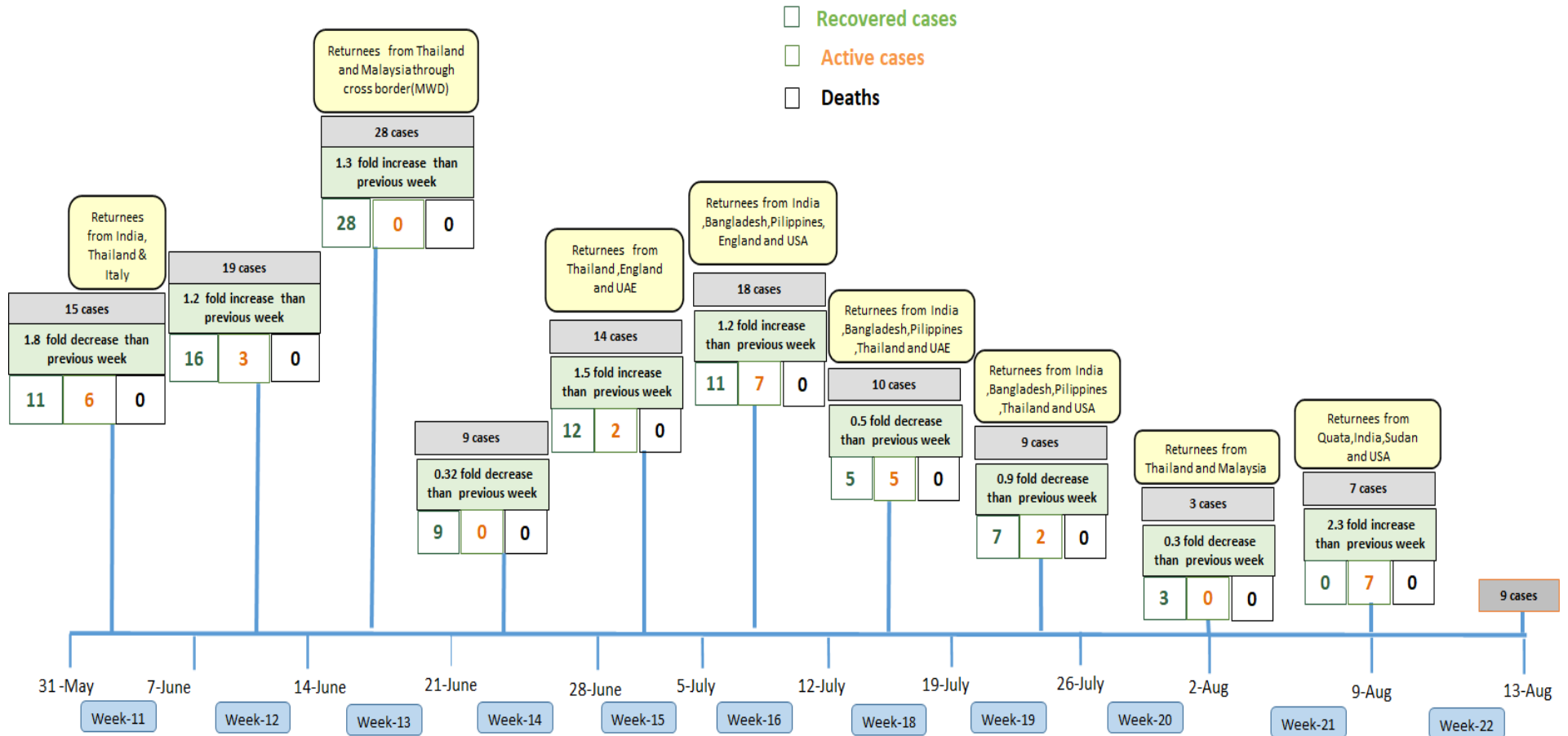
■ Tested person — Confirmed case

Summary of new confirmed cases detection after first two cases (as of 13.8.2020)



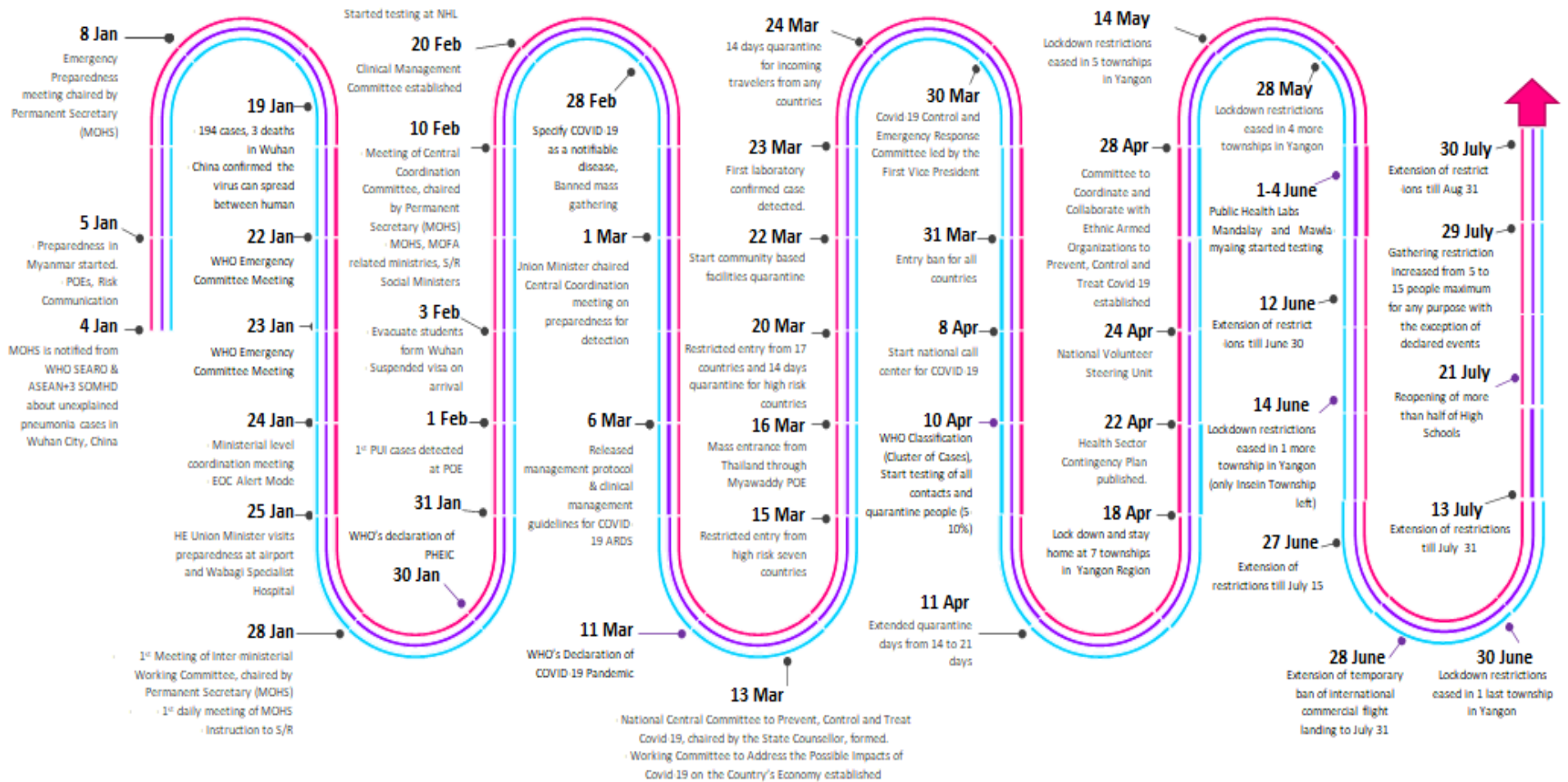
- Confirmed cases were detected as a peak in the 4th week after first confirmed cases due to the religious event cluster.
- Confirmed cases were decreased but still raised than the first 3 weeks due to the religious event cluster and workplace cluster.
- There were an increased in numbers of cases in the 7th week after the first two cases due to the household cluster linked with a religious cluster.
- Confirmed cases were detected by a nearly two-fold rise in the 9th and 10th weeks after the first two cases because of returnees coming back by relief flights.

Summary of new confirmed cases detection after first two cases (as of 13.8.2020)



- Confirmed cases were detected as a peak in the 4th week after first confirmed cases due to the religious event cluster.
- Confirmed cases were decreased but still raised than the first 3 weeks due to the religious event cluster and workplace cluster.
- There were an increased in numbers of cases in the 7th week after the first two cases due to the household cluster linked with a religious cluster.
- Confirmed cases were detected by a nearly two-fold rise in the 9th and 10th weeks after the first two cases because of returnees coming back by relief flights.

Timeline of Preparedness and Response to COVID-19 in Myanmar (as of 13.8.2020)



Hotline Number — 0673 420 268

Data source - CEU, DMS, NHL, PHL (MDY and MLM), DMR, DSGH, State and Region Health Departments