



Ministry of Health and Sports (Myanmar)

Department of Public Health

Central Epidemiology Unit

(8 August 2020)

Coronavirus Disease 2019 (COVID-19)

Situation Report - 123

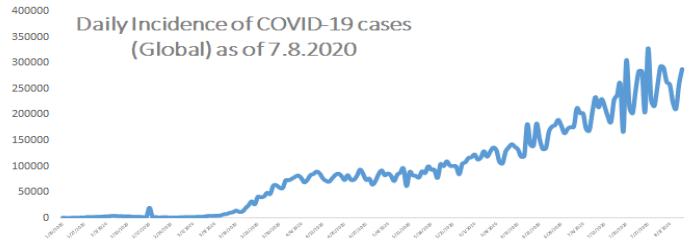
Data as reported by States and Regions by 9:30 PM MST 7 August 2020

Global Situation (WHO situation report - 200) data as of 14:30 MST 7 August 2020

Confirmed cases
18,902,735

Deaths
709,511

Case Fatality Rate
3.7 %



Myanmar Situation

Total Tested

124,765

Confirmed Cases

359

Negative

124,406

Recovered

311

86.6% of Confirmed cases

Active

42

11.6% of Confirmed cases

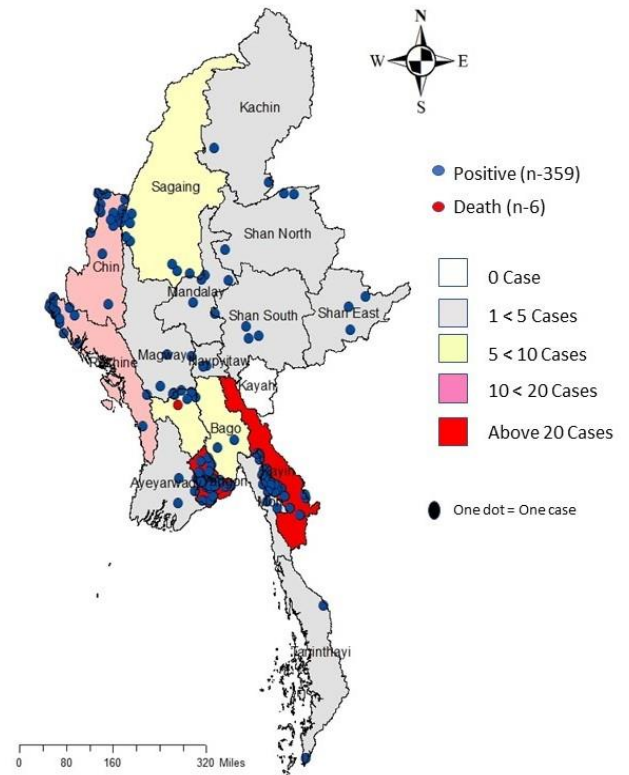
Death

6

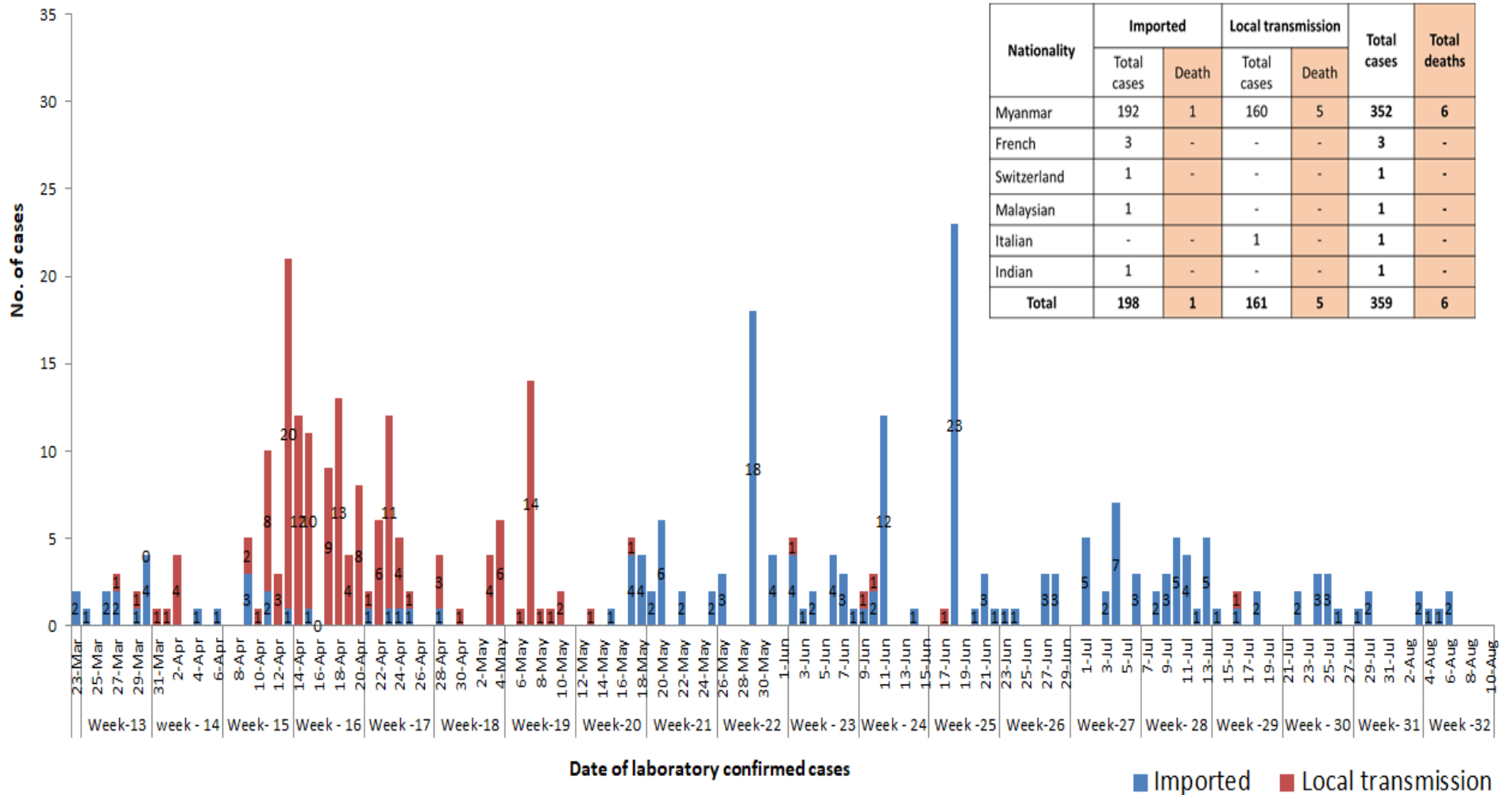
1.6% of Confirmed cases

No	State/Region	COVID –19 Confirmed case	Recovered	Deaths
1	Yangon	252	215(2 New)	5
2	Kayin	29	26	-
3	Chin	17	11	-
4	Rakhine	16	16	-
5	Sagaing	9	9	-
6	Bago	9	8	1
7	Shan (South)	4	4	-
8	Mandalay	4	4	-
9	Shan (East)	3	3	-
10	Shan (North)	3	3	-
11	Magway	3	3	-
12	Naypyitaw	2	2	-
13	Ayeyarwaddy	2	2	-
14	Kachin	2	2	-
15	Mon	2	2	-
16	Thanintharyi	2	1	-
17	Kayah	-	-	-
Total		359	311(2 New)	6

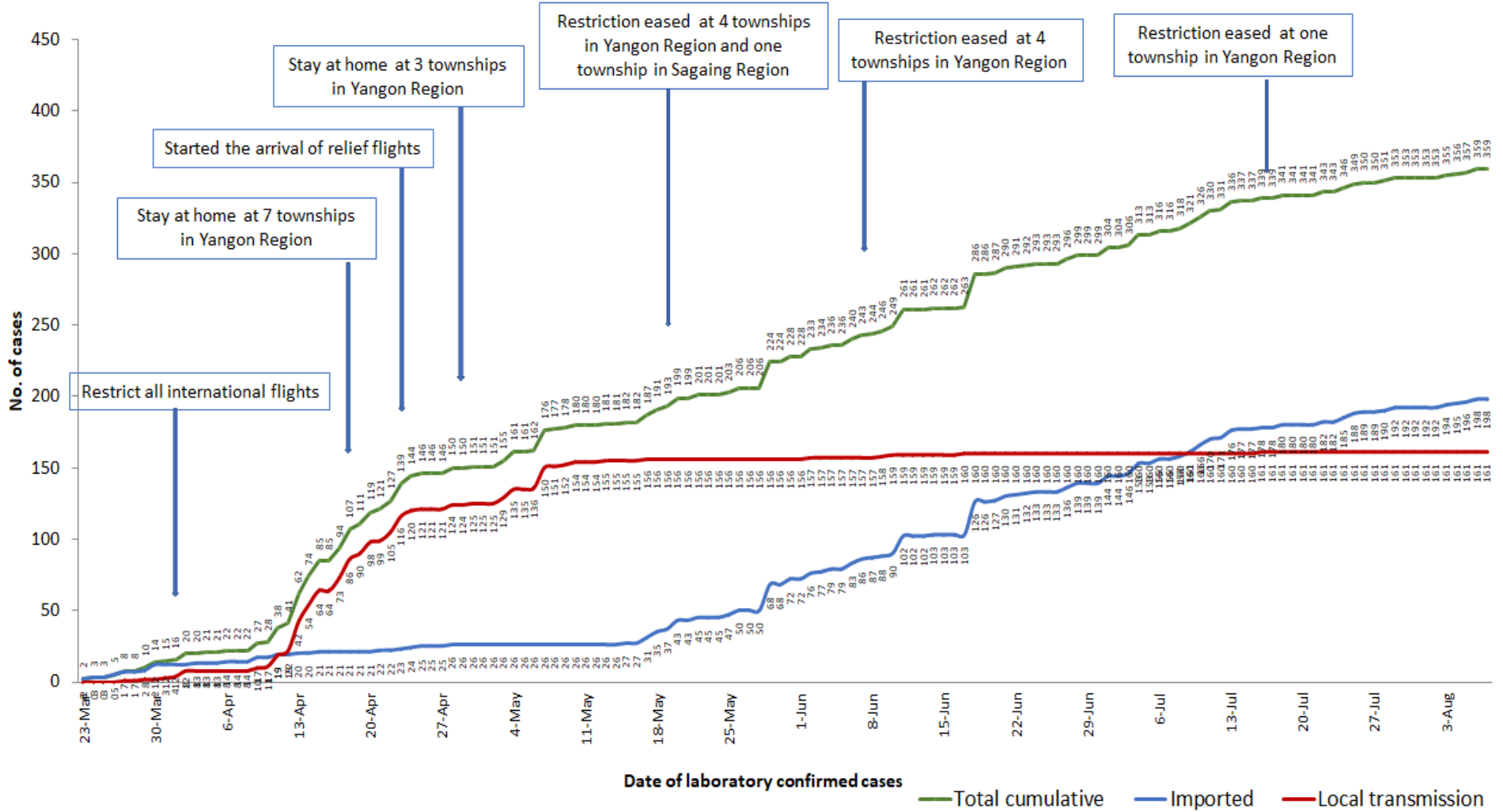
Map showing COVID-19 laboratory confirmed cases



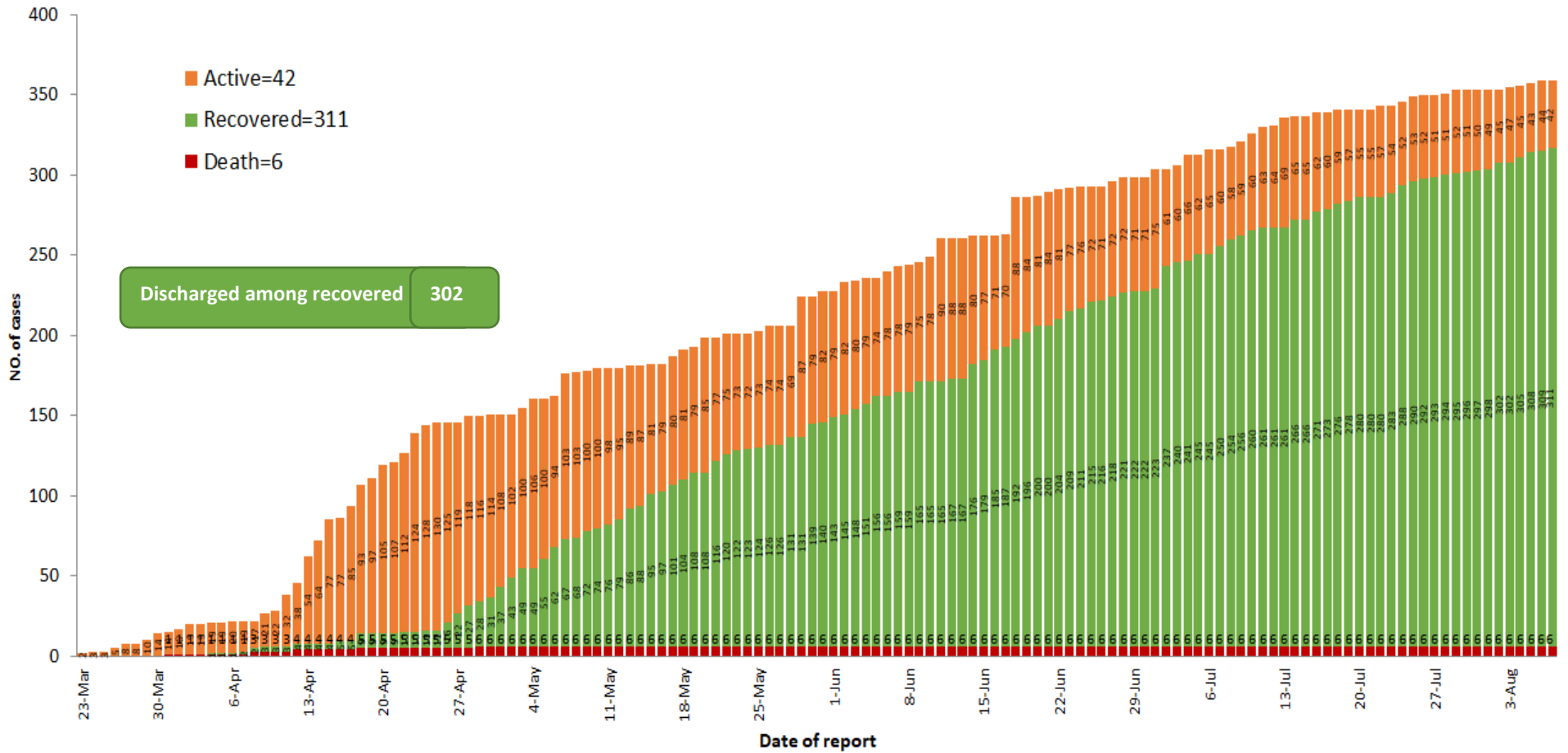
COVID-19 confirmed cases by types of transmissions (as of 7.8.2020, 9:30 pm) n=359



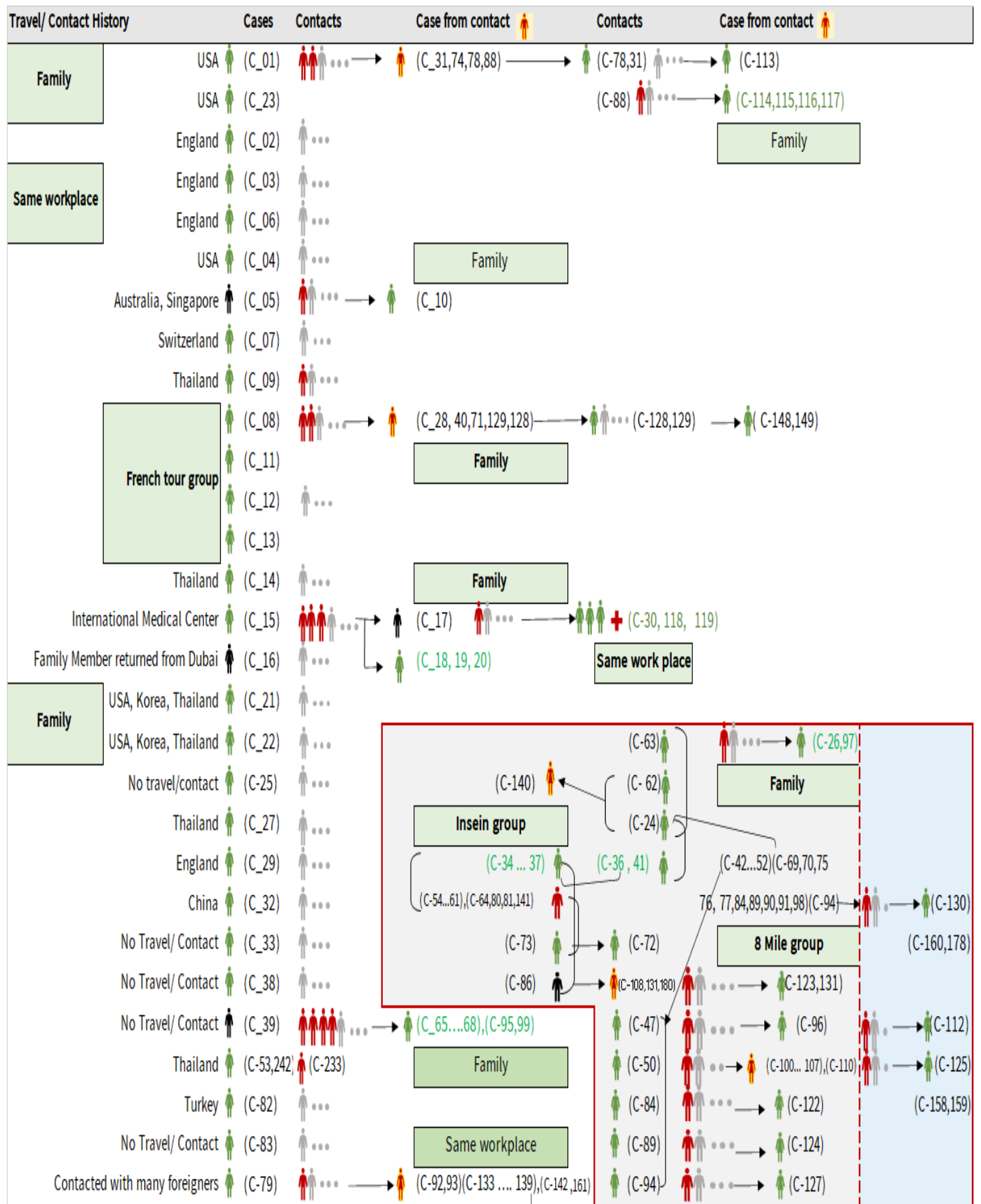
Total laboratory confirmed cases by date (as of 7.8.2020, 9:30 pm), n= 359



Cumulative Number of active confirmed cases, recovered and deaths (23.3.2020 – 7.8.2020), n (cumulative)=359



Summary of COVID-19 confirmed cases (as of 7.8.2020), n (contacts)= 5,789



Summary of COVID-19 confirmed cases (as of 7.8.2020), n (contacts)= 5,789

Travel/ Contact History	Cases	Contacts	Case from contact	Contacts	Case from contact
No Travel/ Contact	(C-85)	...			(C-110)
No travel / Contact	(C-87)	...	(C-126)		(C-28,40,42,43,44,45,46,48,49,51,52)
No travel / Contact	(C-109)	...	(C-139)	(C-146)	(C-54,55,56,57,58,60,61,63,64,69,70)
No travel / Contact	(C-111)	...	(C-133,134,142)	(C-147)	(C-71,74,75,76,77,80,81,88,90,91,92,93)
No travel/Contact	(C-120)	...			(C-98,100,101,102,103,104,105,106,107,108)
England	(C-327,121,302,303,317)				(C-133,134,135,136,137,138,139,140,141,142)
No travel/Contact	(C-132)	...			(C-151,152,153,154,157,158,159,160,161)
Dubai/Thailand	(C-143)	...			(C-164,165,167,168,170,171,172,174)
No travel/Contact	(C-144)	...			(C-178,184,189,191,193,205,207,216,217,218)
India	(C-145,204,208,209,210,211,212,213,215,220,221,223,224,229,225,227,228,252,255,259,296,299,300)				(C-226,233,234,235,237,246,253,258,306,318)
China	(C-150,230)			Household	
Contact with religious event cluster	(C-162)	...	(C-151,152,153,154,157)	(C-165 ... 177)	(C-166,169,173,175,176,177)
No travel/contact	(C-155)	...	(C-163,164)	(C-177)	(C-179)
No travel/contact	(C-156)	...			(C-181)
No travel/contact	(C-183)	...			
Malaysia	(C-184,189,273,280,351,353)		(C-182,185,186,191,188,190,187,200,201,232,275,282)		
UAE	(C-301,315,316,337)		(C-193,192,194,195,196,197,198,199,300,301,314,340)		
Italy	(C-243,202)				
No travel/Contact	(C-231)				
Bangladesh	(C-234,244,247,250,262,309,310,334)		(C-244,245,247,248,250,262,291,292,293,308,325,326,348)		
No travel/contact	(C-245)	...			
No travel/contact	(C-249)				
No travel/contact	(C-263)	...			
Thailand	(C-332,333,335,346,349,352)		(C-264,265,266,267,268,269,270,271,272,273,274,276,277,278,279,280,281,283,284,285,286,287,294,304,312,336,338)		
Quata	(C-288,354,355)		(C-289,290)		
India	(C-205.....214,216...219,222.... 229,....241,246,253....258,260,261,295,297,298,307,322,323,324,344,345,357,358,359)		(C-203,240,251,254,328,329,330)		
Lao	(C-311)	...			
Singapore	(C-313)	...			
Philippines	(C-319,321)	(C-320,342,343)			
USA	(C-347,350)	(C-331)			
No travel/contact	(C-339)	...			
Sudan	(C-356)				

Summary of current situation

Type	New (6.8.2020-7.8.2020)	Total (on 7.8.2020)
Suspected and Person Under Investigation (PUI)	24	134
Hospital Quarantine	4	34
Facility Quarantine	801	18,957

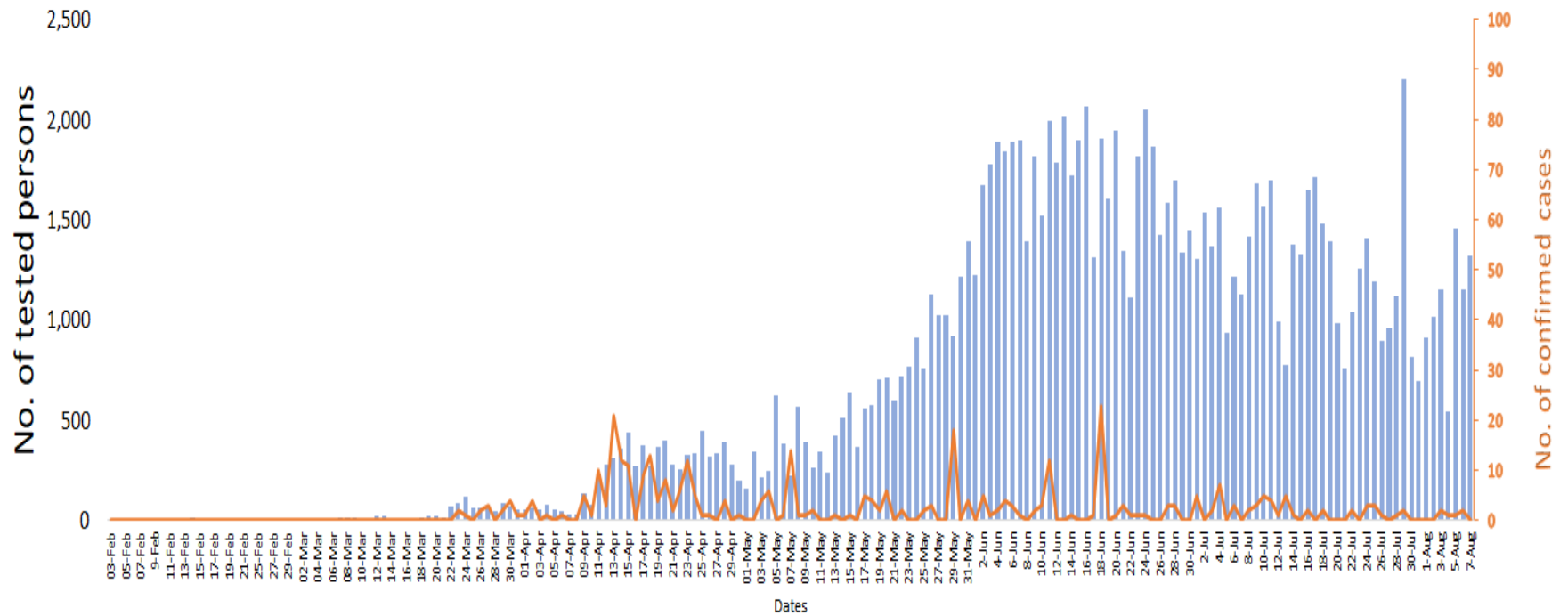
Person under Investigation (PUI) by State/Region hospitals (31.1.2020 – 7.8.2020) n= 6,930

No.	State/Region	PUI
1	Yangon	3457
2	Mandalay	1442
3	Kayin	312
4	Mon	285
5	Shan (N)	248
6	Magway	220
7	Bago	181
8	Shan (E)	127
9	Shan (S)	104
10	Ayeyarwaddy	102
11	Sagaing	90
12	Kayah	81
13	Thanintharyi	75
14	Rakhine	69
15	Naypyitaw	64
16	Kachin	43
17	Chin	30
Total		6,930

No. of Facility Quarantine sites and Quarantined people on 7.8.2020

No.	State/Region	No. of facilities	Total no. of quarantine
1	Yangon	58	3752
2	Mon	259	2596
3	Kayin	361	2565
4	Bago	192	2404
5	Tanintharyi	189	1597
6	Magway	407	1216
7	Sagaing	168	903
8	Mandalay	58	857
9	Rakhine	244	695
10	Shan South	79	612
11	Ayeyarwaddy	149	589
12	Kachin	114	508
13	Naypyitaw	1	280
14	Kayah	18	85
15	Shan North	271	144
16	Shan East	7	103
17	Chin	18	51
Total		2,593	18,957

COVID-19 confirmed cases among tested by date (as of 7.8.2020)

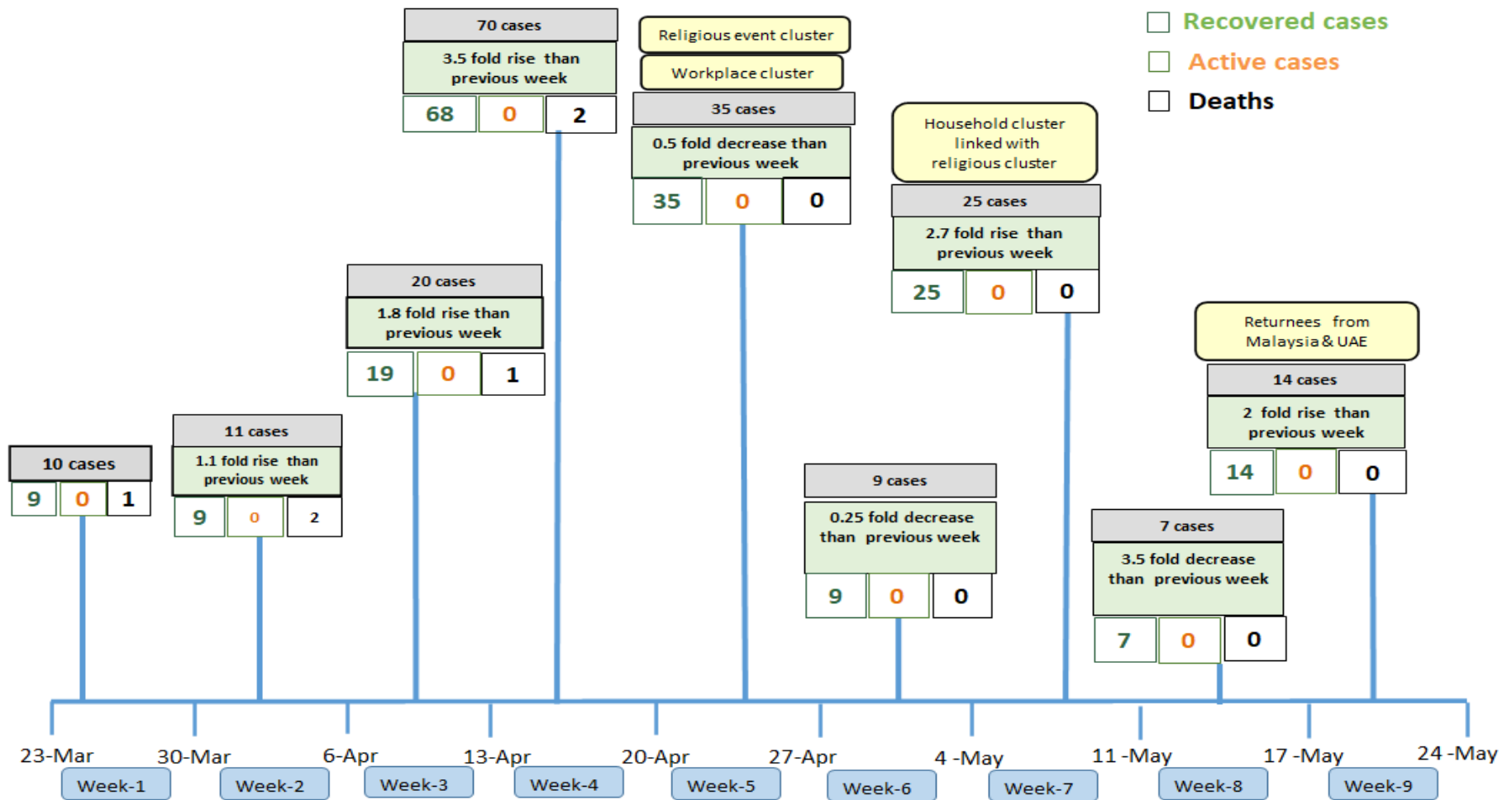


Total tested persons - 124,765

Total confirmed cases - 359

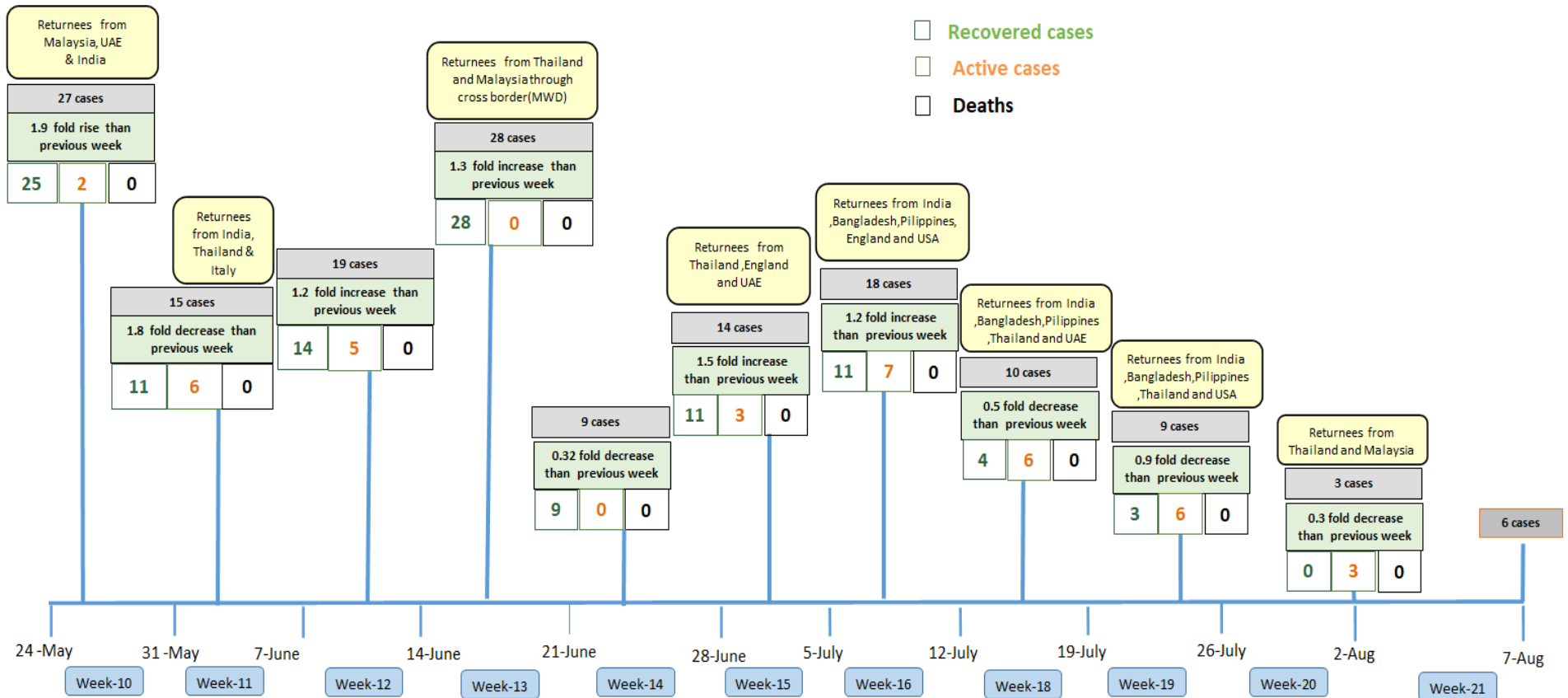
■ Tested person — Confirmed case

Summary of new confirmed cases detection after first two cases (as of 7.8.2020)



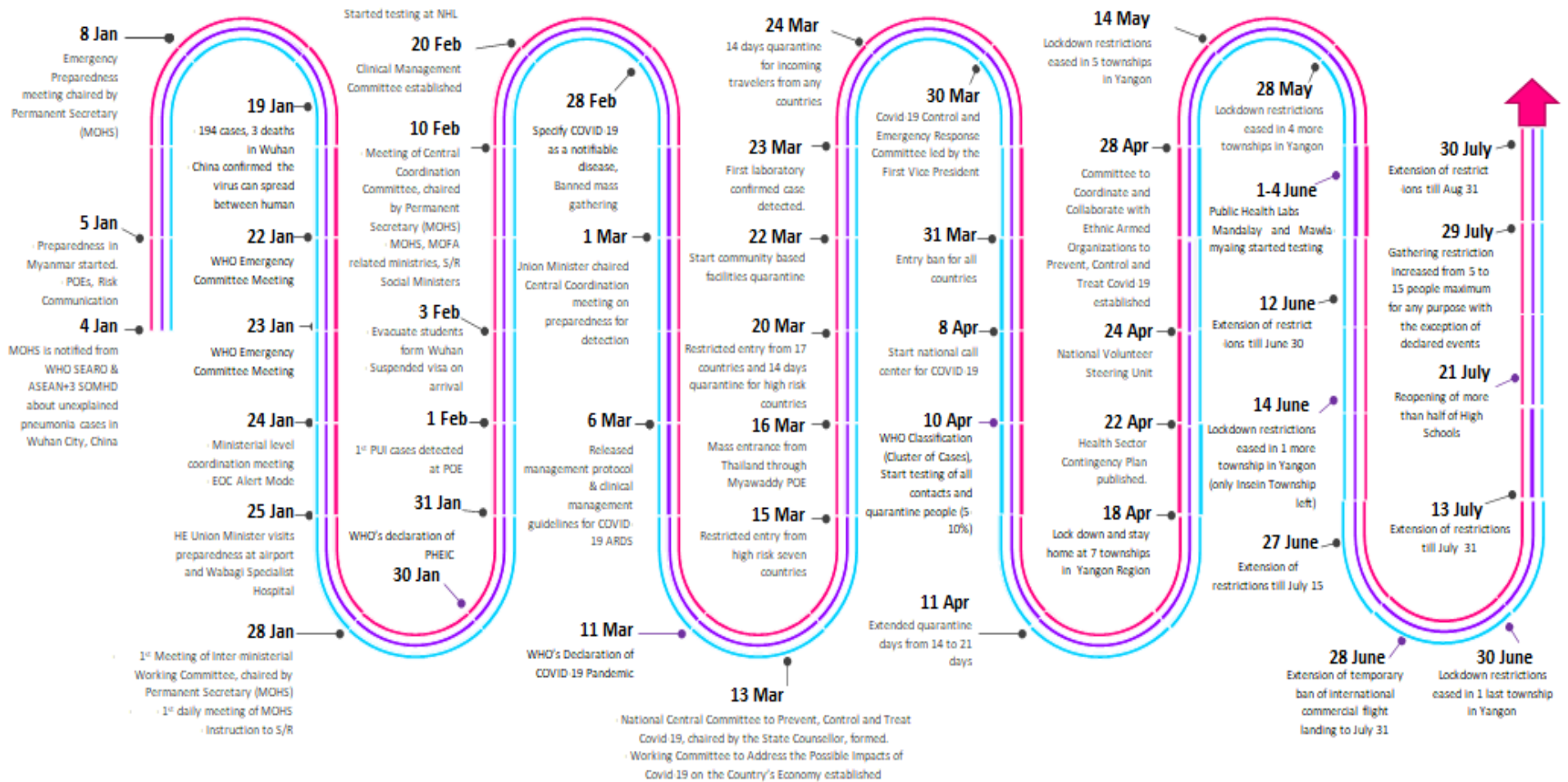
- Confirmed cases were detected as a peak in the 4th week after first confirmed cases due to the religious event cluster.
- Confirmed cases were decreased but still raised than the first 3 weeks due to the religious event cluster and workplace cluster.
- There were an increased in numbers of cases in the 7th week after the first two cases due to the household cluster linked with a religious cluster.
- Confirmed cases were detected by a nearly two-fold rise in the 9th and 10th weeks after the first two cases because of returnees coming back by relief flights.

Summary of new confirmed cases detection after first two cases (as of 7.8.2020)



- Confirmed cases were detected as a peak in the 4th week after first confirmed cases due to the religious event cluster.
- Confirmed cases were decreased but still raised than the first 3 weeks due to the religious event cluster and workplace cluster.
- There were an increased in numbers of cases in the 7th week after the first two cases due to the household cluster linked with a religious cluster.
- Confirmed cases were detected by a nearly two-fold rise in the 9th and 10th weeks after the first two cases because of returnees coming back by relief flights.

Timeline of Preparedness and Response to COVID-19 in Myanmar (as of 7.8.2020)



Hotline Number— 0673 420 268

Data source - CEU, DMS, NHL, PHL (MDY and MLM), DMR, DSGH, State and Region Health Departments