



Ministry of Health and Sports (Myanmar)

Department of Public Health

Central Epidemiology Unit

(6 August 2020)

Coronavirus Disease 2019 (COVID-19)

Situation Report - 121

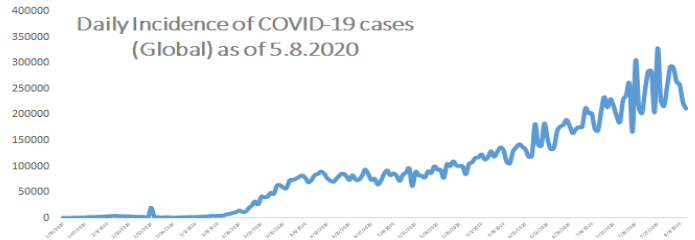
Data as reported by States and Regions by 8:30 PM MST 5 August 2020

Global Situation (WHO situation report - 198) data as of 14:30 MST 5 August 2020

Confirmed cases
18,354,342

Deaths
696,147

Case Fatality Rate
3.7 %



Myanmar Situation

Total Tested
122,290

Confirmed Cases
357

Negative
121,933

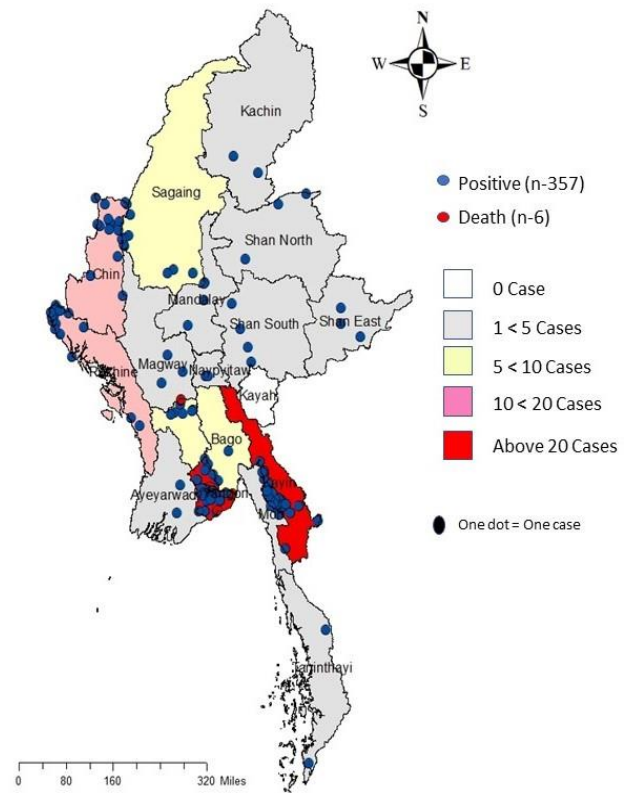
Recovered
308
86.2% of Confirmed cases

Active
43
12.0% of Confirmed cases

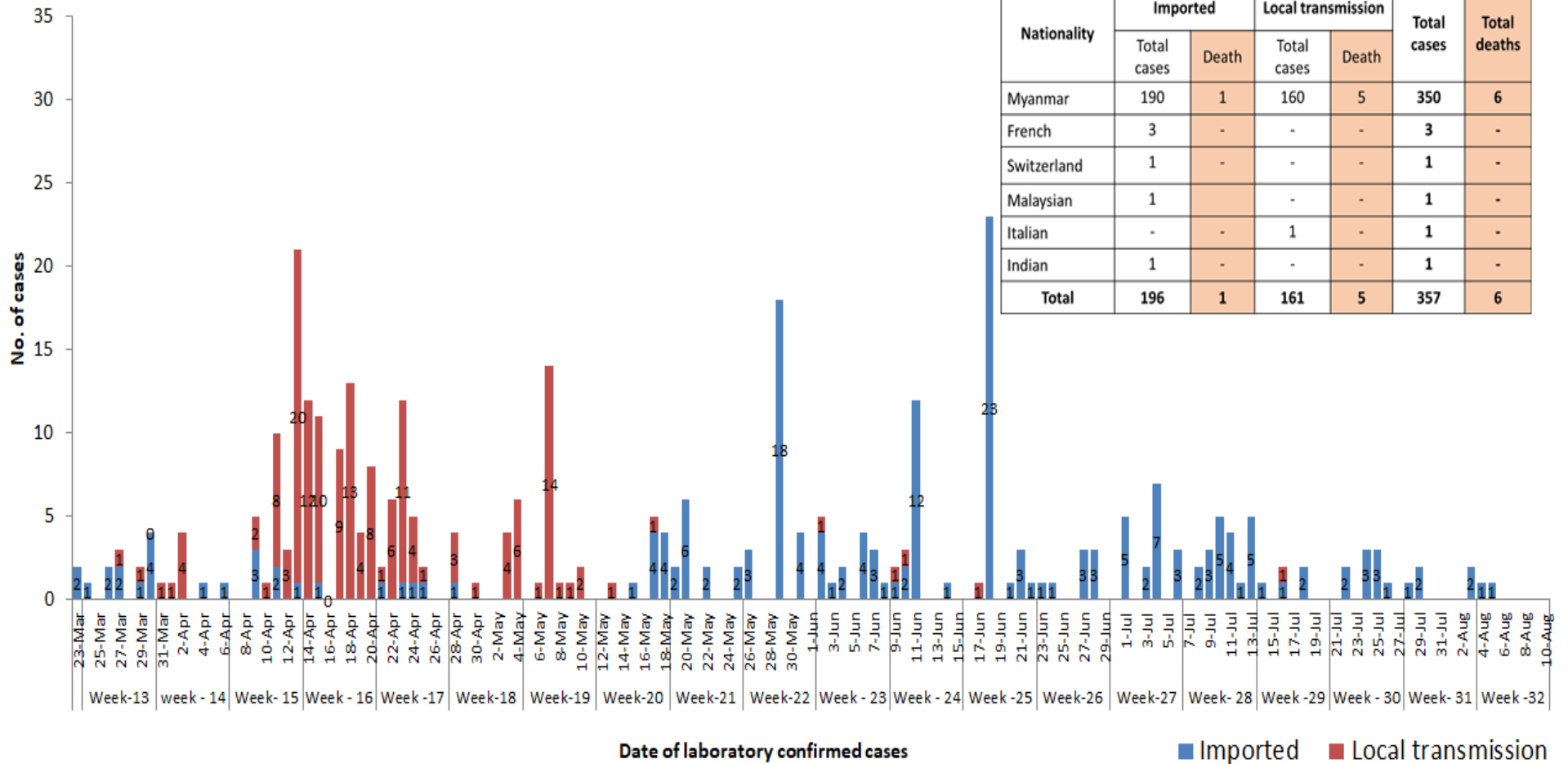
Death
6
1.6% of Confirmed cases

No	State/Region	COVID –19 Confirmed case	Recovered	Deaths
1	Yangon	252	212(2 New)	5
2	Kayin	29	26(1 New)	-
3	Rakhine	16	16	-
4	Chin	15(1 New)	11	-
5	Sagaing	9	9	-
6	Bago	9	8	1
7	Shan (South)	4	4	-
8	Mandalay	4	4	-
9	Shan (East)	3	3	-
10	Shan (North)	3	3	-
11	Magway	3	3	-
12	Naypyitaw	2	2	-
13	Ayeyarwaddy	2	2	-
14	Kachin	2	2	-
15	Mon	2	2	-
16	Thanintharyi	2	1	-
17	Kayah	-	-	-
Total		357(1 New)	308(3 New)	6

Map showing COVID-19 laboratory confirmed cases

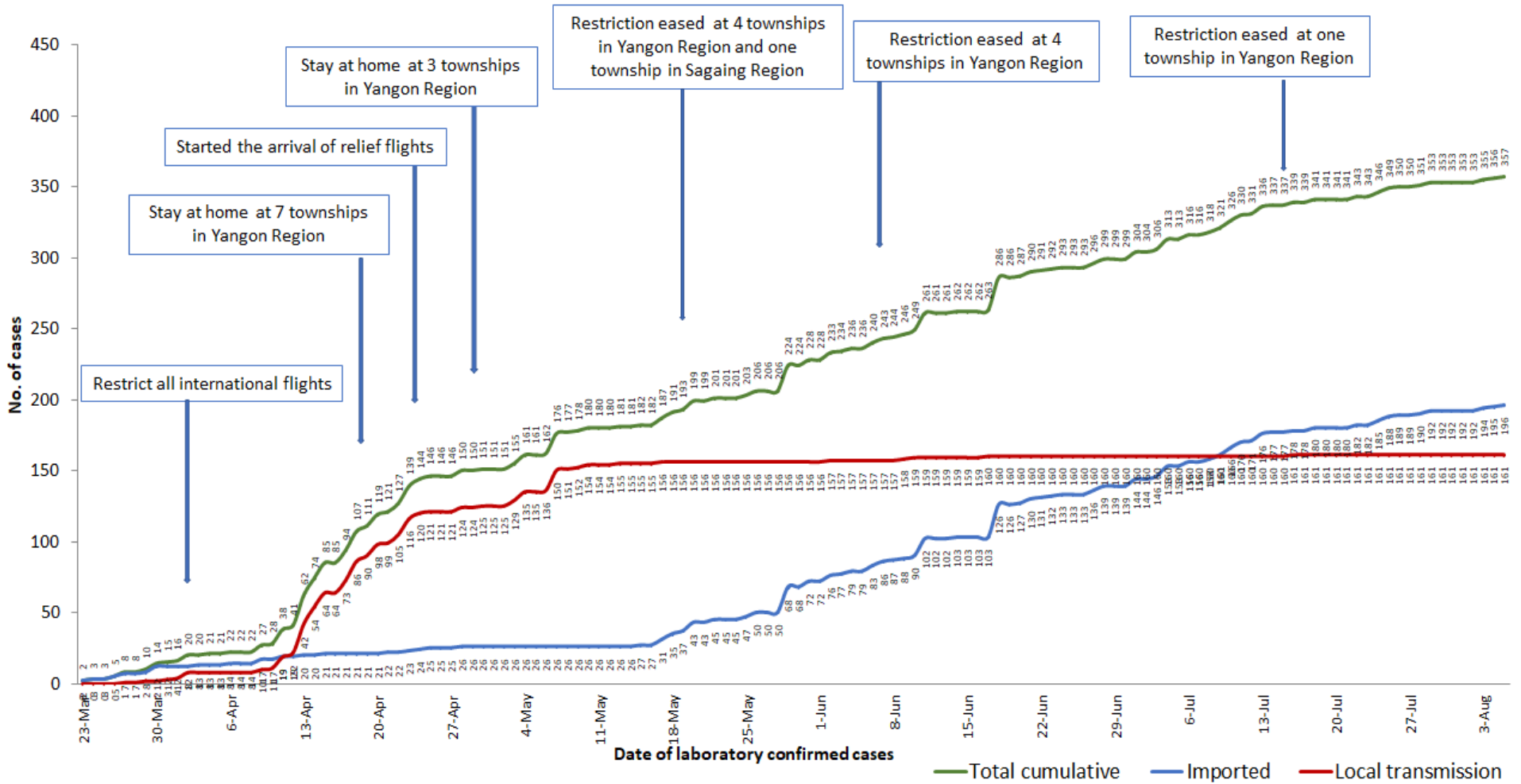


COVID-19 confirmed cases by types of transmissions (as of 5.8.2020, 8:30 pm) n=357

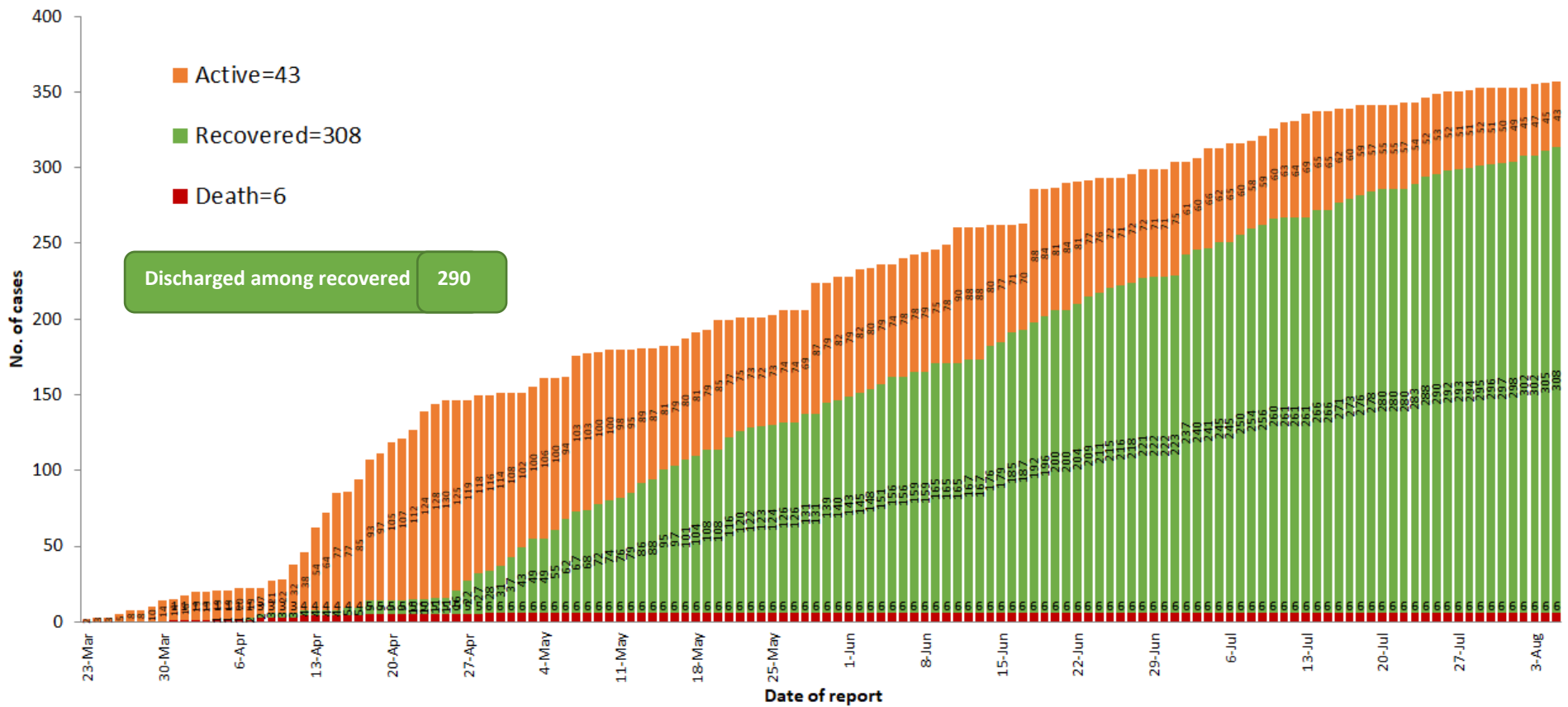


Nationality	Imported		Local transmission		Total cases	Total deaths
	Total cases	Death	Total cases	Death		
Myanmar	190	1	160	5	350	6
French	3	-	-	-	3	-
Switzerland	1	-	-	-	1	-
Malaysian	1	-	-	-	1	-
Italian	-	-	1	-	1	-
Indian	1	-	-	-	1	-
Total	196	1	161	5	357	6

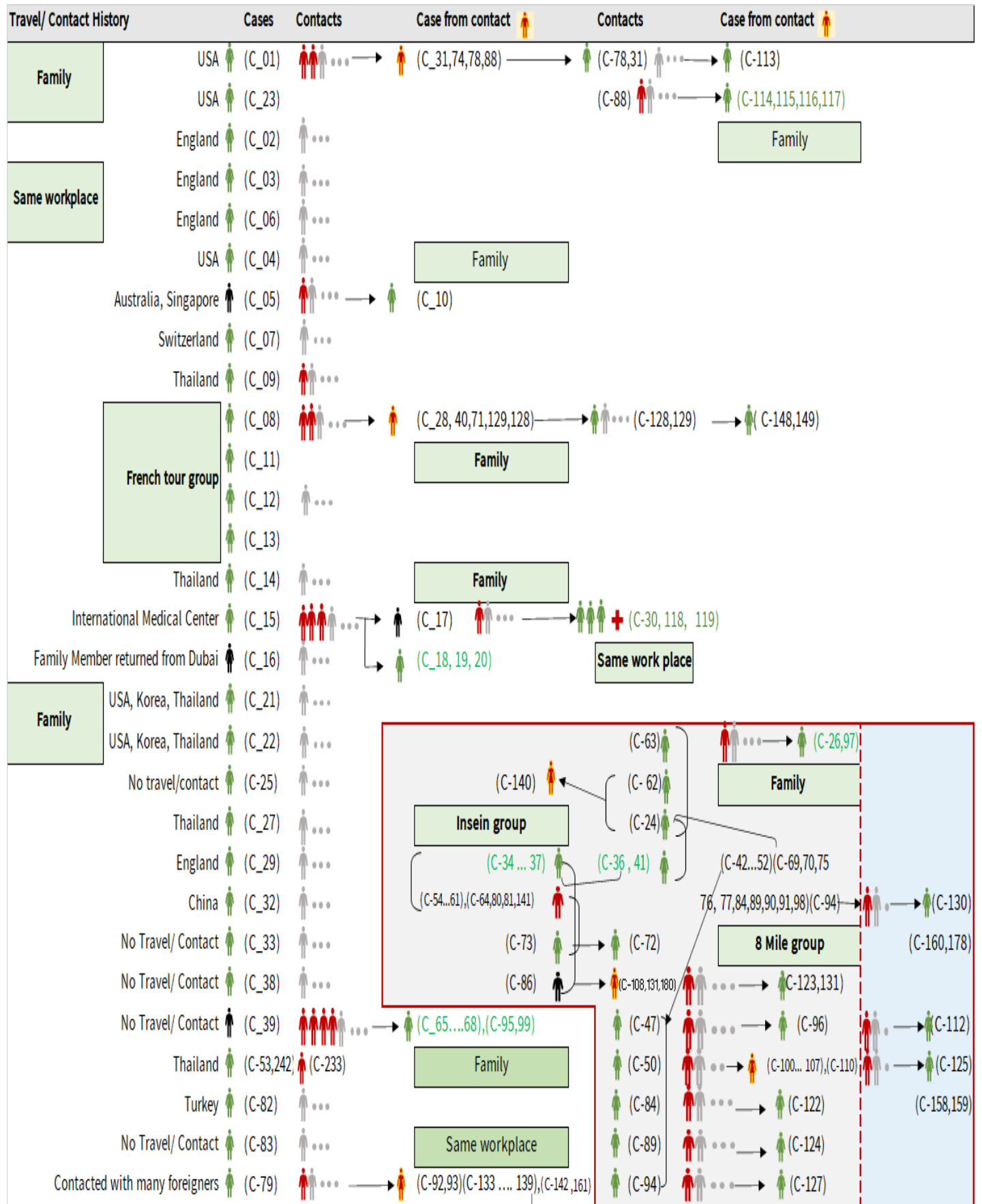
Total laboratory confirmed cases by date (as of 5.8.2020, 8:30 pm), n= 357



Cumulative Number of active confirmed cases, recovered and deaths (23.3.2020 – 5.8.2020), n (cumulative)=357



Summary of COVID-19 confirmed cases (as of 5.8.2020), n (contacts)= 5,787



Summary of COVID-19 confirmed cases (as of 5.8.2020), n (contacts)= 5,787

Travel/ Contact History	Cases	Contacts	Case from contact	Contacts	Case from contact
No Travel/ Contact	(C-85)	...			(C-110)
No travel / Contact	(C-87)	... → (C-126)			(C-28,40,42,43,44,45,46,48,49,51,52)
No travel / Contact	(C-109)	...	(C-139) ... → (C-146)		(C-54,55,56,57,58,60,61,63,64,69,70)
No travel / Contact	(C-111)	...	(C-133,134,142) ... → (C-147)		(C-71,74,75,76,77,80,81,88,90,91,92,93)
No travel/Contact	(C- 120)	...			(C-98,100,101,102,103,104,105,106,107,108)
England	(C-327,121,302,303,317)				(C- 133,134,135,136,137,138,139,140,141,142)
No travel/Contact	(C-132)	...			(C-151,152,153,154,157,158,159,160,161)
Dubai/Thailand	(C-143)	...			(C-164,165,167,168,170,171,172,174)
No travel/Contact	(C-144)	...			(C-178,184,189,191,193,205,207,216,217,218)
India	(C- 145,204,209,210,212,213,215,220,221,223,224,229,225,227,228,252,255,259,296,299,305,306,3				(C-226,233,234,235,237,246,253,258)
China	(C-150,230)			<div style="border: 1px solid black; padding: 2px; display: inline-block;">Household</div>	
Contact with religious event cluster	(C- 162)	... → (C-151,152,153,154,157) → (C-165 177) (C-166,169,173,175,176,177)			
No travel/contact	(C-155)	... → (C-163,164) (163) → (C-177) ... → (C-179) ... → (C-181)			
No travel/contact	(C-156)	...			
No travel/contact	(C- 183)	...			
Malaysia	(C-184,189,273,280,351,353) (C-182,185,186,191,188,190,187,200,201,232,275,282)				
UAE	(C-301,315,316,337) (C-193,192,194,195,196,197,198,199,300,301,314,340)				
Italy	(C-243,202)				
No travel/Contact	(C- 231)				
Bangladesh	(C-234,244,247,250,262,309,310,334) (C-244,245,247,248,250,262,291,292,293,308,325,326,348)				
No travel/contact	(C-245) ...				
No travel/contact	(C-249)				
No travel/contact	(C-263) ...				
Thailand	(C-332,333,335,346,349,352) (C-264,265,266,267,268,269,270,271,272,273,274,276,277,278,279,280,281,283,284,285,286,287,294,304,312,336,338)				
Quata	(C-288,354,355) (C-289,290)				
India	(C-205.....214,216...219,221.... 229,....241,246,253,254...258,260,261,295,297,298,307,322,323,324,344,345,357) (C-203,240,251,328,329,330)				
Lao	(C-311) ...				
Singapore	(C-313) ...				
Philippines	(C-319,321) (C-320,342,343)				
USA	(C-347,350) (C-331)				
No travel/contact	(C-339) ...				
Sudan	(C-356)				

Summary of current situation

Type	New (4.8.2020-5.8.2020)	Total (on 5.8.2020)
Suspected and Person Under Investigation (PUI)	24	129
Hospital Quarantine	5	44
Facility Quarantine	1,345	19,155

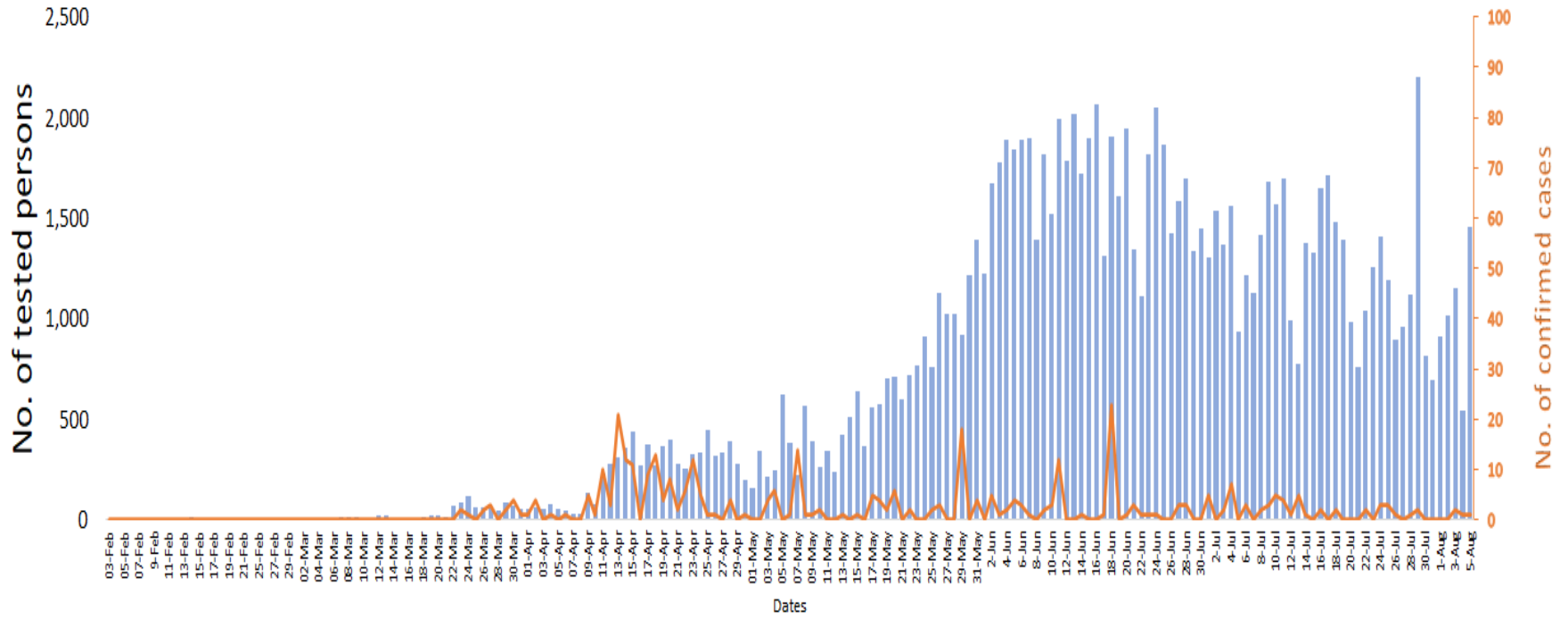
Person under Investigation (PUI) by State/Region hospitals (31.1.2020 – 5.8.2020) n= 6,889

No.	State/Region	PUI
1	Yangon	3445
2	Mandalay	1422
3	Kayin	307
4	Mon	285
5	Shan (N)	245
6	Magway	220
7	Bago	181
8	Shan (E)	126
9	Shan (S)	104
10	Ayeyarwaddy	102
11	Sagaing	90
12	Kayah	81
13	Thanintharyi	75
14	Rakhine	69
15	Naypyitaw	64
16	Kachin	43
17	Chin	30
Total		6,889

No. of Facility Quarantine sites and Quarantined people on 5.8.2020

No.	State/Region	No. of facilities	Total no. of quarantine
1	Yangon	57	3758
2	Mon	278	2510
3	Kayin	357	2341
4	Bago	214	2275
5	Tanintharyi	189	1643
6	Magway	418	1538
7	Sagaing	170	917
8	Mandalay	62	770
9	Rakhine	248	728
10	Ayeyarwaddy	156	598
11	Kachin	429	525
12	Shan South	79	523
13	Shan East	9	338
14	Naypyitaw	1	267
15	Shan North	270	221
16	Kayah	18	146
17	Chin	18	57
Total		2,973	19,155

COVID-19 confirmed cases among tested by date (as of 5.8.2020)

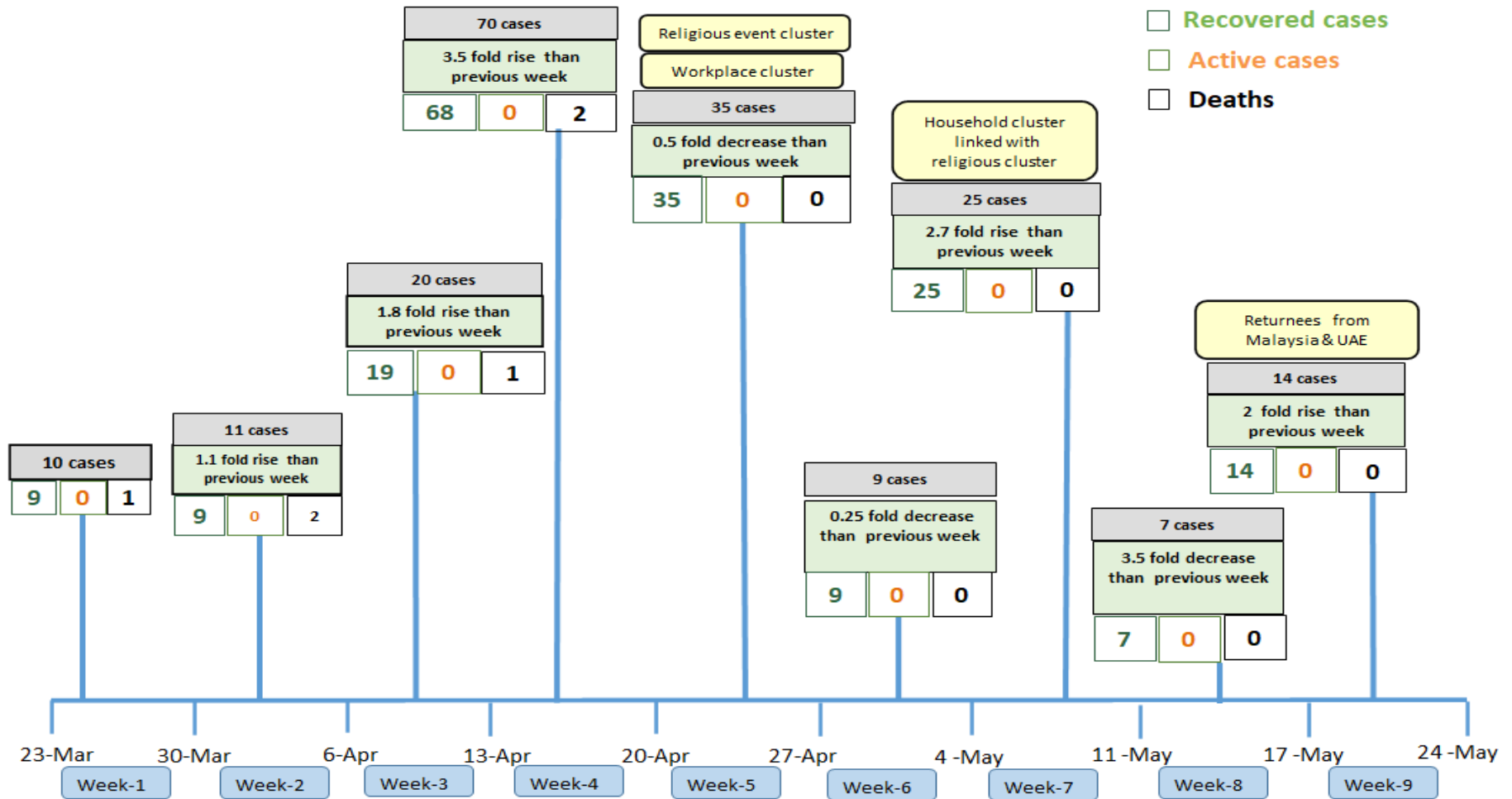


Total tested persons - 122,290

Total confirmed cases - 357

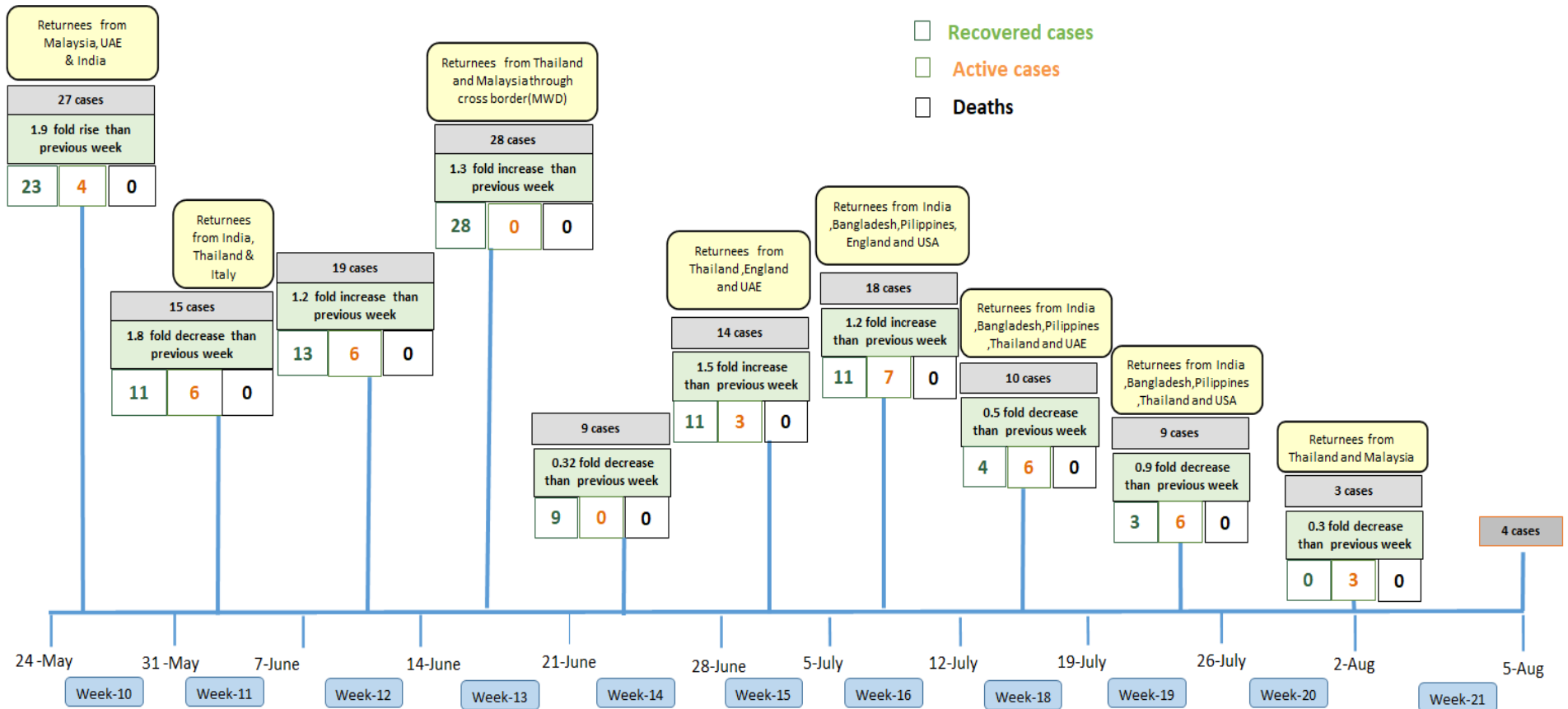
■ Tested person — Confirmed case

Summary of new confirmed cases detection after first two cases (as of 5.8.2020)



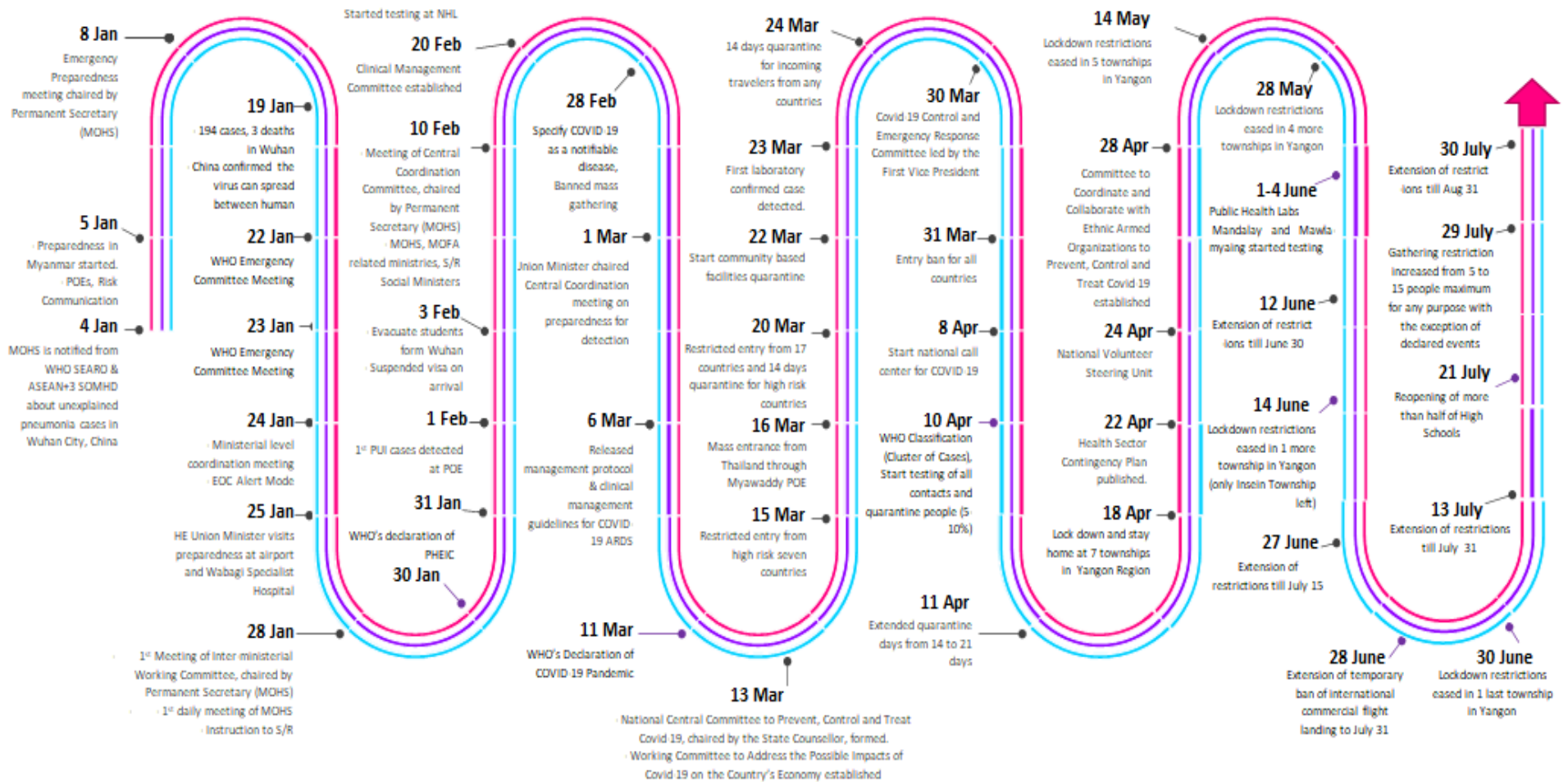
- Confirmed cases were detected as a peak in the 4th week after first confirmed cases due to the religious event cluster.
- Confirmed cases were decreased but still raised than the first 3 weeks due to the religious event cluster and workplace cluster.
- There were an increased in numbers of cases in the 7th week after the first two cases due to the household cluster linked with a religious cluster.
- Confirmed cases were detected by a nearly two-fold rise in the 9th and 10th weeks after the first two cases because of returnees coming back by relief flights.

Summary of new confirmed cases detection after first two cases (as of 5.8.2020)



- Confirmed cases were detected as a peak in the 4th week after first confirmed cases due to the religious event cluster.
- Confirmed cases were decreased but still raised than the first 3 weeks due to the religious event cluster and workplace cluster.
- There were an increased in numbers of cases in the 7th week after the first two cases due to the household cluster linked with a religious cluster.
- Confirmed cases were detected by a nearly two-fold rise in the 9th and 10th weeks after the first two cases because of returnees coming back by relief flights.

Timeline of Preparedness and Response to COVID-19 in Myanmar (as of 5.8.2020)



Hotline Number — 0673 420 268

Data source - CEU, DMS, NHL, PHL (MDY and MLM), DMR, DSGH, State and Region Health Departments