



Ministry of Health and Sports (Myanmar)

Department of Public Health

Central Epidemiology Unit

(5 August 2020)

Coronavirus Disease 2019 (COVID-19)

Situation Report - 120

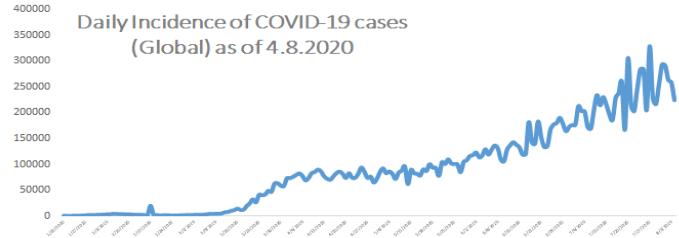
Data as reported by States and Regions by 8:30 PM MST 4 August 2020

Global Situation (WHO situation report - 197) data as of 14:30 MST 4 August 2020

Confirmed cases
18,142,718

Deaths
691,013

Case Fatality Rate
3.8 %



Myanmar Situation

Total Tested
120,832

Confirmed Cases
356

Negative
120,476

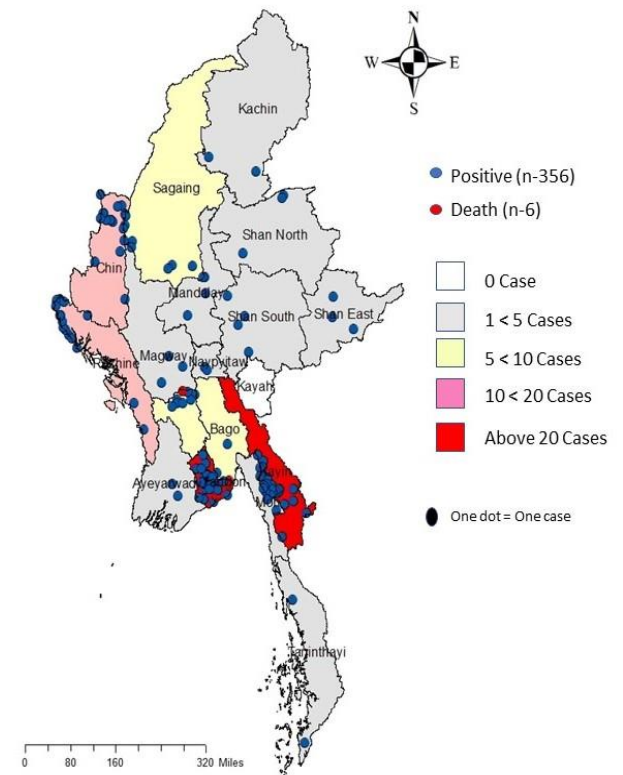
Recovered
305
85.6% of Confirmed cases

Active
45
12.6% of Confirmed cases

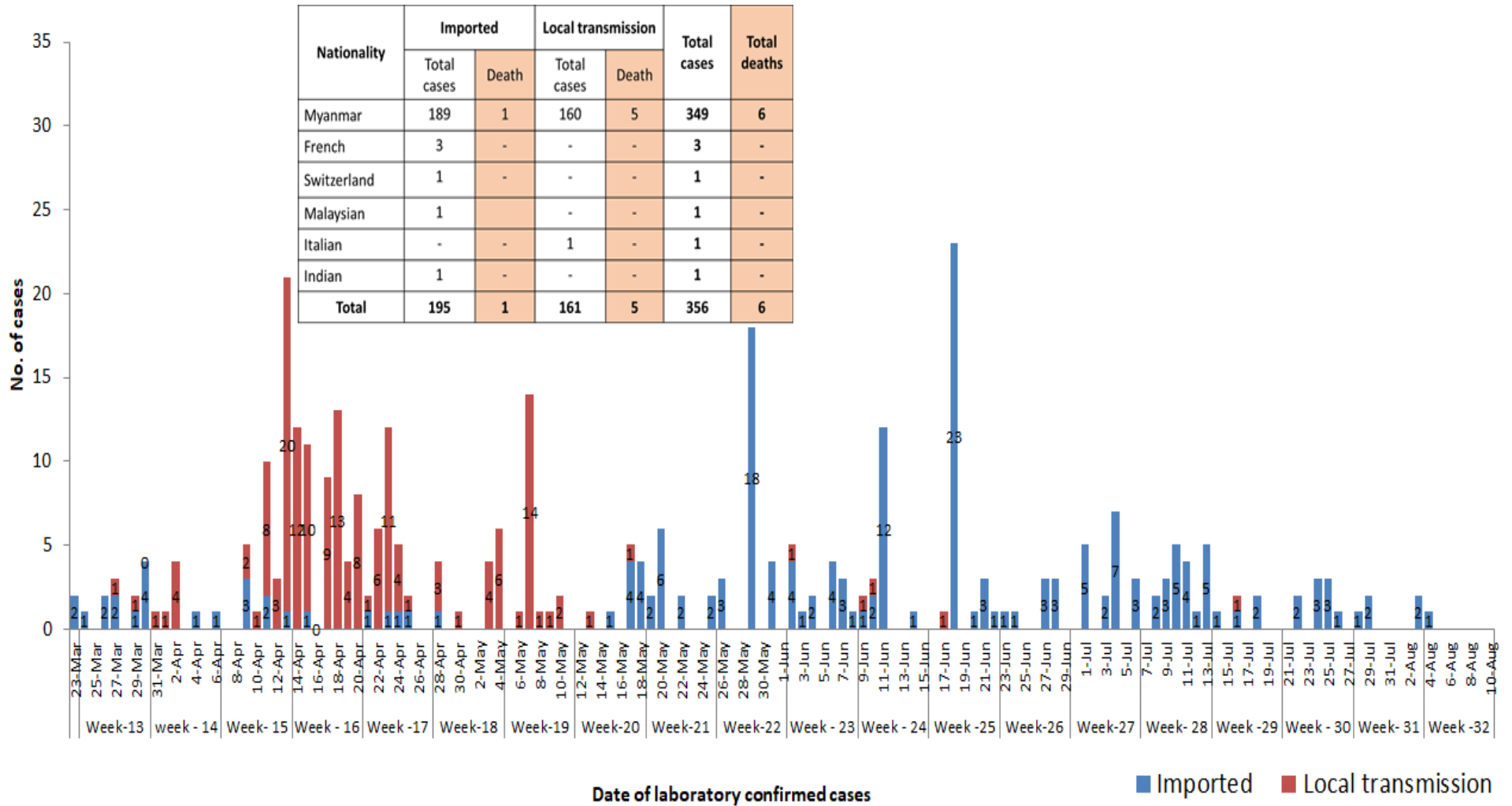
Death
6
1.6% of Confirmed cases

No	State/Region	COVID –19 Confirmed case	Recovered	Deaths
1	Yangon	252(1 New)	207(3 New)	5
2	Kayin	29	25	-
3	Rakhine	16	16	-
4	Chin	14	11	-
5	Sagaing	9	9	-
6	Bago	9	8	1
7	Shan (South)	4	4	-
8	Mandalay	4	4	-
9	Shan (East)	3	3	-
10	Shan (North)	3	3	-
11	Magway	3	3	-
12	Naypyitaw	2	2	-
13	Ayeyarwaddy	2	2	-
14	Kachin	2	2	-
15	Mon	2	2	-
16	Thanintharyi	2	1	-
17	Kayah	-	-	-
Total		356(1 New)	305(3 New)	6

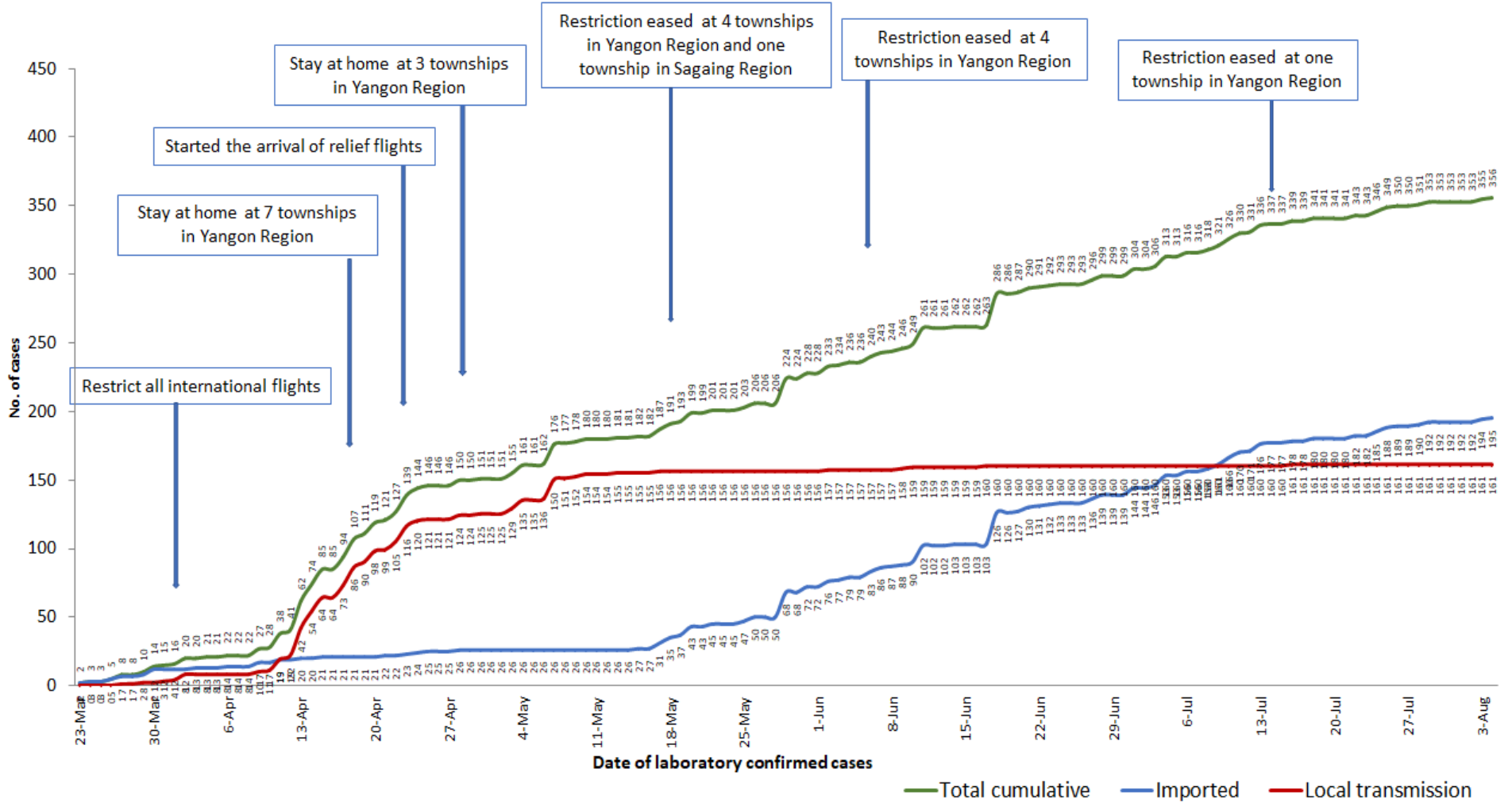
Map showing COVID-19 laboratory confirmed cases



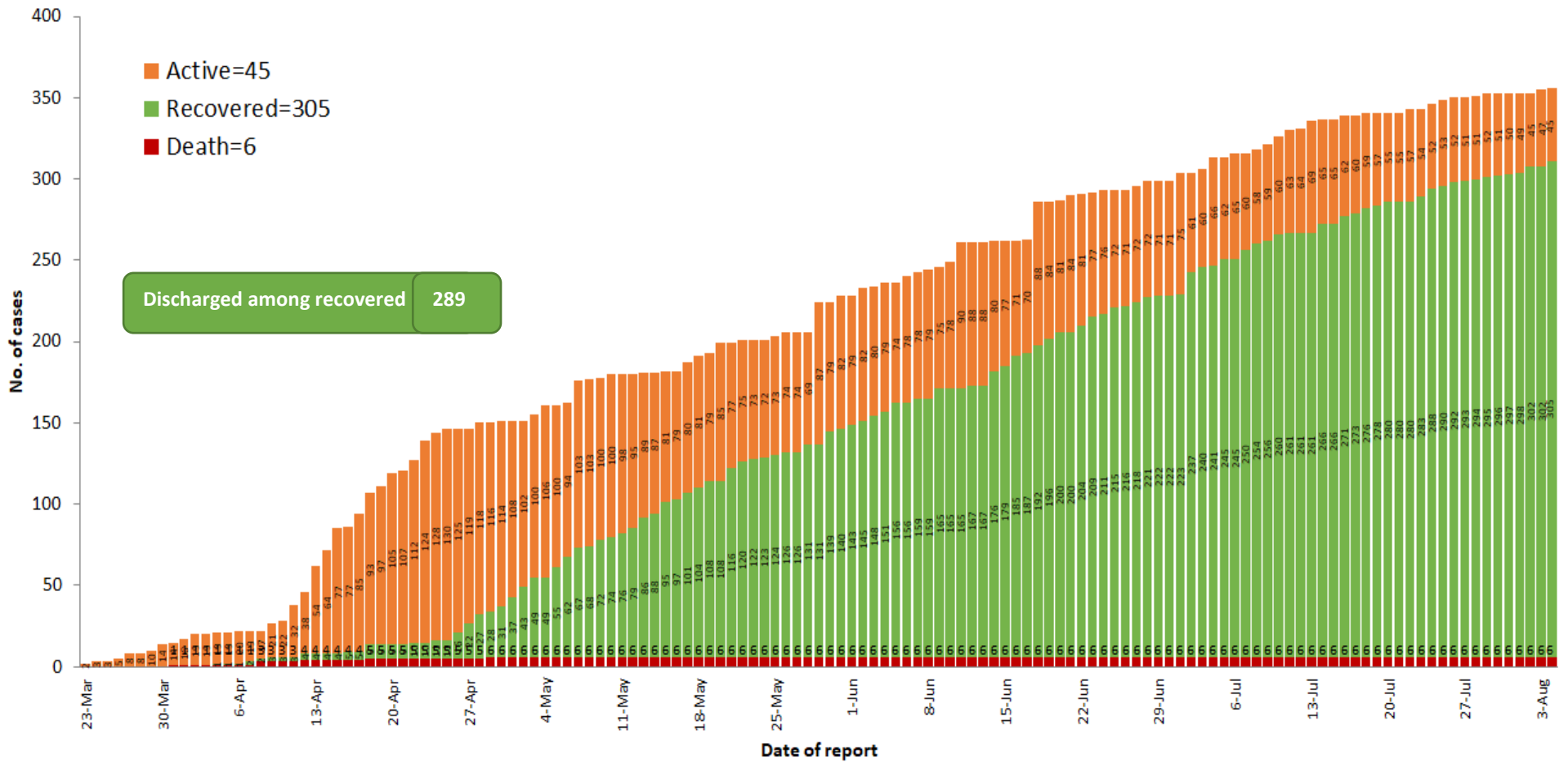
COVID-19 confirmed cases by types of transmissions (as of 4.8.2020, 8:30 pm) n=356



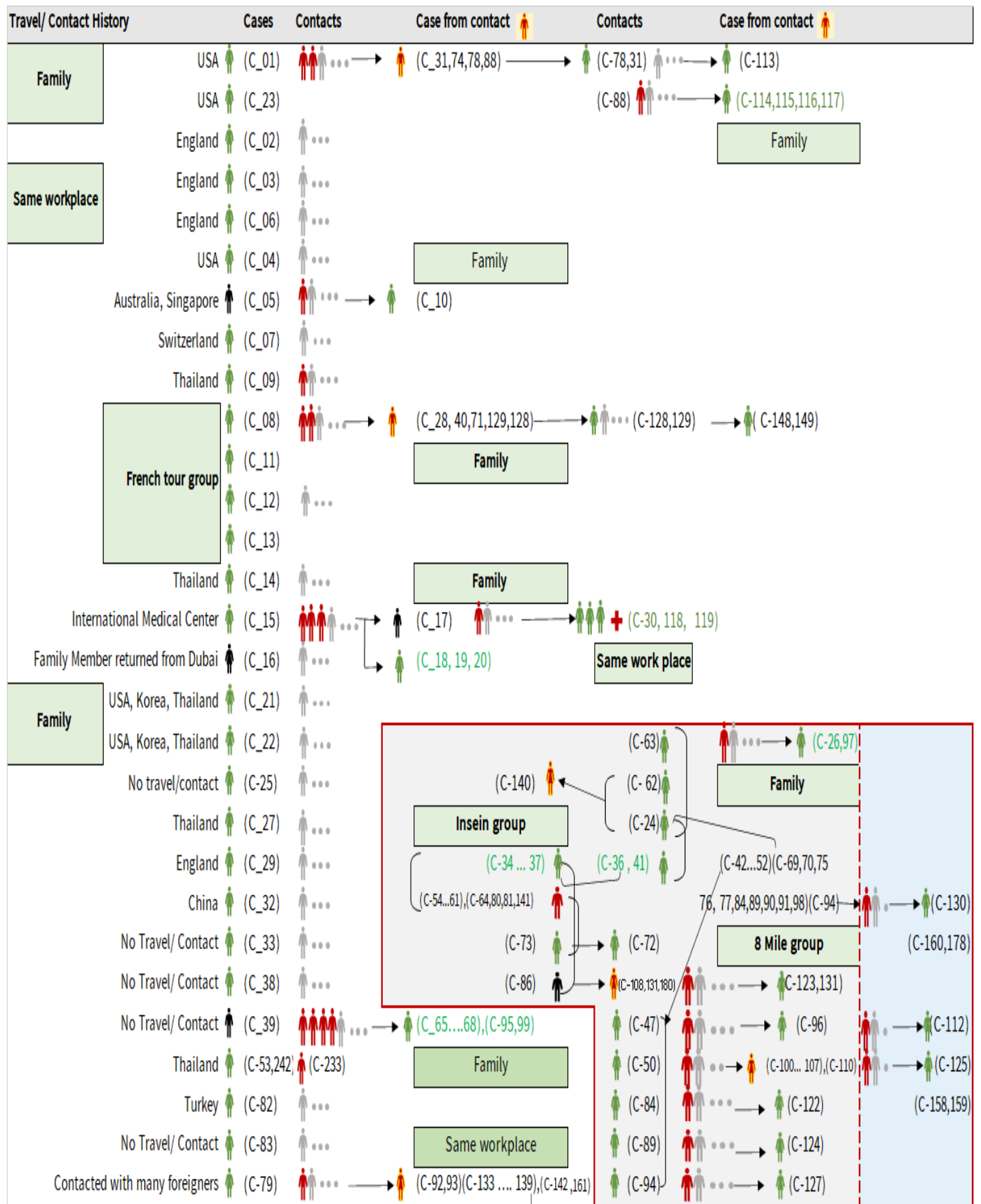
Total laboratory confirmed cases by date (as of 4.8.2020, 8:30 pm), n= 356



Cumulative Number of active confirmed cases, recovered and deaths (23.3.2020 – 4.8.2020), n (cumulative)=356



Summary of COVID-19 confirmed cases (as of 4.8.2020), n (contacts)= 5,781



Summary of COVID-19 confirmed cases (as of 4.8.2020), n (contacts)= 5,781

Travel/ Contact History	Cases	Contacts	Case from contact	Contacts	Case from contact
No Travel/ Contact	(C-85)	...			(C-110)
No travel / Contact	(C-87)	...	→ (C-126)		(C-28,40,42,43,44,45,46,48,49,51,52)
No travel / Contact	(C-109)	...	(C-139)	→ (C-146)	(C-54,55,56,57,58,60,61,63,64,69,70)
No travel / Contact	(C-111)	...	(C-133,134,142)	→ (C-147)	(C-71,74,75,76,77,80,81,88,90,91,92,93)
No travel/Contact	(C-120)	...			(C-98,100,101,102,103,104,105,106,107,108)
England	(C-327,121,302,303,317)				(C-133,134,135,136,137,138,139,140,141,142)
No travel/Contact	(C-132)	...			(C-151,152,153,154,157,158,159,160,161)
Dubai/Thailand	(C-143)	...			(C-164,165,167,168,170,171,172,174)
No travel/Contact	(C-144)	...			(C-178,184,189,191,193,205,207,216,217,218)
India	(C-145,204,209,210,212,213,215,220,221,223,224,229,225,227,228,252,255,259,296,299,305,306,307,308,309,310,311,312,313,314,315,316,317,318,319,320,321,322,323,324,325,326,327,328,329,330,331,332,333,334,335,336,337,338,339,340,341,342,343,344,345,346,347,348,349,350,351,352,353,354,355,356,357,358,359,360,361,362,363,364,365,366,367,368,369,370,371,372,373,374,375,376,377,378,379,380,381,382,383,384,385,386,387,388,389,390,391,392,393,394,395,396,397,398,399,400,401,402,403,404,405,406,407,408,409,410,411,412,413,414,415,416,417,418,419,420,421,422,423,424,425,426,427,428,429,430,431,432,433,434,435,436,437,438,439,440,441,442,443,444,445,446,447,448,449,450,451,452,453,454,455,456,457,458,459,460,461,462,463,464,465,466,467,468,469,470,471,472,473,474,475,476,477,478,479,480,481,482,483,484,485,486,487,488,489,490,491,492,493,494,495,496,497,498,499,500,501,502,503,504,505,506,507,508,509,510,511,512,513,514,515,516,517,518,519,520,521,522,523,524,525,526,527,528,529,530,531,532,533,534,535,536,537,538,539,540,541,542,543,544,545,546,547,548,549,550,551,552,553,554,555,556,557,558,559,560,561,562,563,564,565,566,567,568,569,570,571,572,573,574,575,576,577,578,579,580,581,582,583,584,585,586,587,588,589,590,591,592,593,594,595,596,597,598,599,600,601,602,603,604,605,606,607,608,609,610,611,612,613,614,615,616,617,618,619,620,621,622,623,624,625,626,627,628,629,630,631,632,633,634,635,636,637,638,639,640,641,642,643,644,645,646,647,648,649,650,651,652,653,654,655,656,657,658,659,660,661,662,663,664,665,666,667,668,669,670,671,672,673,674,675,676,677,678,679,680,681,682,683,684,685,686,687,688,689,690,691,692,693,694,695,696,697,698,699,700,701,702,703,704,705,706,707,708,709,710,711,712,713,714,715,716,717,718,719,720,721,722,723,724,725,726,727,728,729,730,731,732,733,734,735,736,737,738,739,740,741,742,743,744,745,746,747,748,749,750,751,752,753,754,755,756,757,758,759,760,761,762,763,764,765,766,767,768,769,770,771,772,773,774,775,776,777,778,779,780,781,782,783,784,785,786,787,788,789,790,791,792,793,794,795,796,797,798,799,800,801,802,803,804,805,806,807,808,809,810,811,812,813,814,815,816,817,818,819,820,821,822,823,824,825,826,827,828,829,830,831,832,833,834,835,836,837,838,839,840,841,842,843,844,845,846,847,848,849,850,851,852,853,854,855,856,857,858,859,860,861,862,863,864,865,866,867,868,869,870,871,872,873,874,875,876,877,878,879,880,881,882,883,884,885,886,887,888,889,890,891,892,893,894,895,896,897,898,899,900,901,902,903,904,905,906,907,908,909,910,911,912,913,914,915,916,917,918,919,920,921,922,923,924,925,926,927,928,929,930,931,932,933,934,935,936,937,938,939,940,941,942,943,944,945,946,947,948,949,950,951,952,953,954,955,956,957,958,959,960,961,962,963,964,965,966,967,968,969,970,971,972,973,974,975,976,977,978,979,980,981,982,983,984,985,986,987,988,989,990,991,992,993,994,995,996,997,998,999,1000)		(C-226,233,234,235,237,246,253,258)		
China	(C-150,230)			Household	
Contact with religious event cluster	(C-162)	...	→ (C-151,152,153,154,157)	→ (C-165 177)	(C-166,169,173,175,176,177)
No travel/contact	(C-155)	...	→ (C-163,164) (163)	(C-177) → (C-179)	(C-181)
No travel/contact	(C-156)	...			
No travel/contact	(C-183)	...			
Malaysia	(C-184,189,273,280,351,353)		(C-182,185,186,191,188,190,187,200,201,232,275,282)		
UAE	(C-301,315,316,337)		(C-193,192,194,195,196,197,198,199,300,301,314,340)		
Italy	(C-243,202)				
No travel/Contact	(C-231)				
Bangladesh	(C-234,244,247,250,262,309,310,334)		(C-244,245,247,248,250,262,291,292,293,308,325,326,348)		
No travel/contact	(C-245)	...			
No travel/contact	(C-249)				
No travel/contact	(C-263)	...			
Thailand	(C-279,332,333,335,346,349,352)		(C-264,265,266,267,268,269,270,271,272,273,274,276,277,278,280,281,283,284,285,286,287,294,304,312,336,338)		
Quata	(C-288,354,355)		(C-289,290)		
India	(C-205.....214,216...219,221.... 229,....241,246,253,254...258,260,261,295,297,298,307,322,323,324,344,345)		(C-203,240,251,328,329,330)		
Lao	(C-311)	...			
Singapore	(C-313)	...			
Philippines	(C-319,321,342,343)		(C-320)		
USA	(C-347,350)		(C-331)		
No travel/contact	(C-339)	...			
Sudan	(C-356)				

Summary of current situation

Type	New (3.8.2020-4.8.2020)	Total (on 4.8.2020)
Suspected and Person Under Investigation (PUI)	9	123
Hospital Quarantine	4	44
Facility Quarantine	1,720	18,313

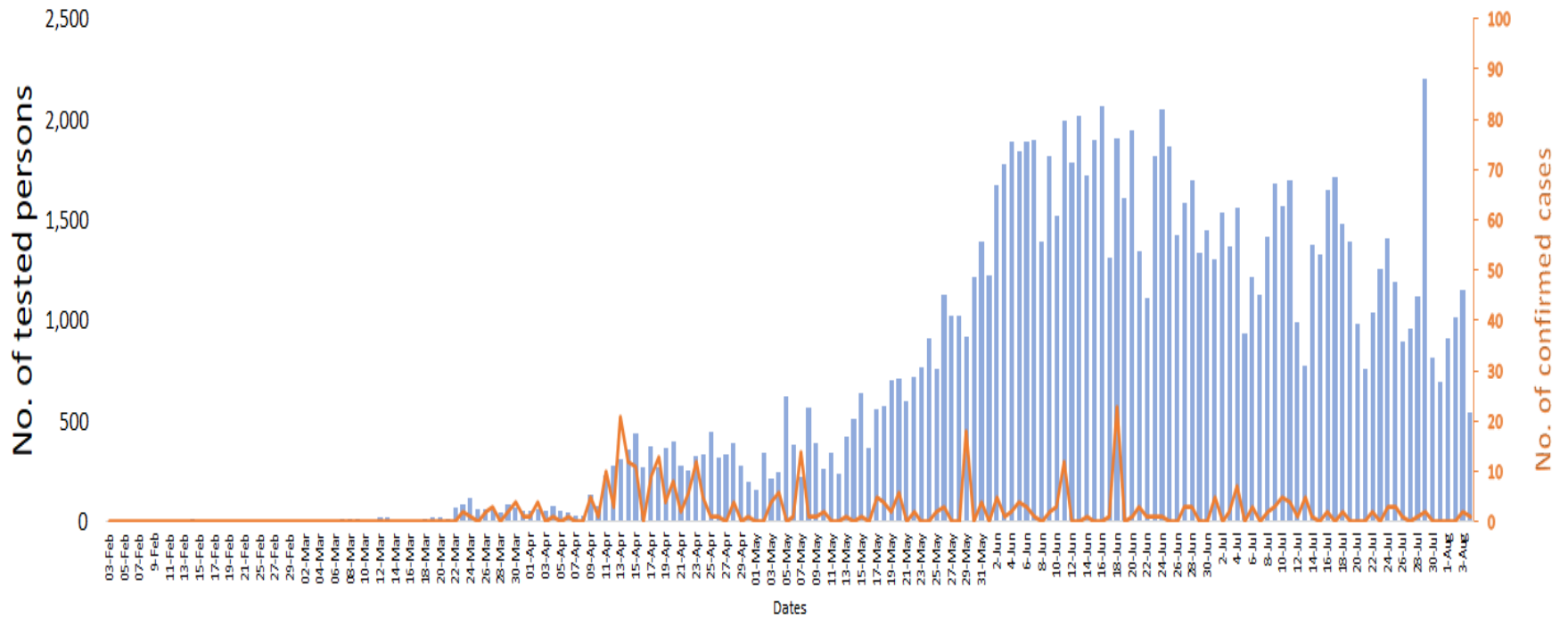
Person under Investigation (PUI) by State/Region hospitals (31.1.2020 – 4.8.2020) n= 6,865

No.	State/Region	PUI
1	Yangon	3429
2	Mandalay	1419
3	Kayin	307
4	Mon	284
5	Shan (N)	242
6	Magway	219
7	Bago	181
8	Shan (E)	126
9	Shan (S)	104
10	Ayeyarwaddy	102
11	Sagaing	90
12	Kayah	81
13	Thanintharyi	75
14	Rakhine	69
15	Naypyitaw	64
16	Kachin	43
17	Chin	30
Total		6,865

No. of Facility Quarantine sites and Quarantined people on 4.8.2020

No.	State/Region	No. of facilities	Total no. of quarantine
1	Yangon	57	3756
2	Mon	268	2439
3	Bago	213	2194
4	Kayin	349	1972
5	Tanintharyi	189	1666
6	Magway	418	1538
7	Sagaing	170	939
8	Mandalay	62	770
9	Rakhine	247	735
10	Kachin	427	589
11	Shan South	79	551
12	Ayeyarwaddy	156	539
13	Naypyitaw	1	265
14	Shan North	270	221
15	Kayah	18	79
16	Chin	18	57
17	Shan East	9	3
Total		2,951	18,313

COVID-19 confirmed cases among tested by date (as of 4.8.2020)

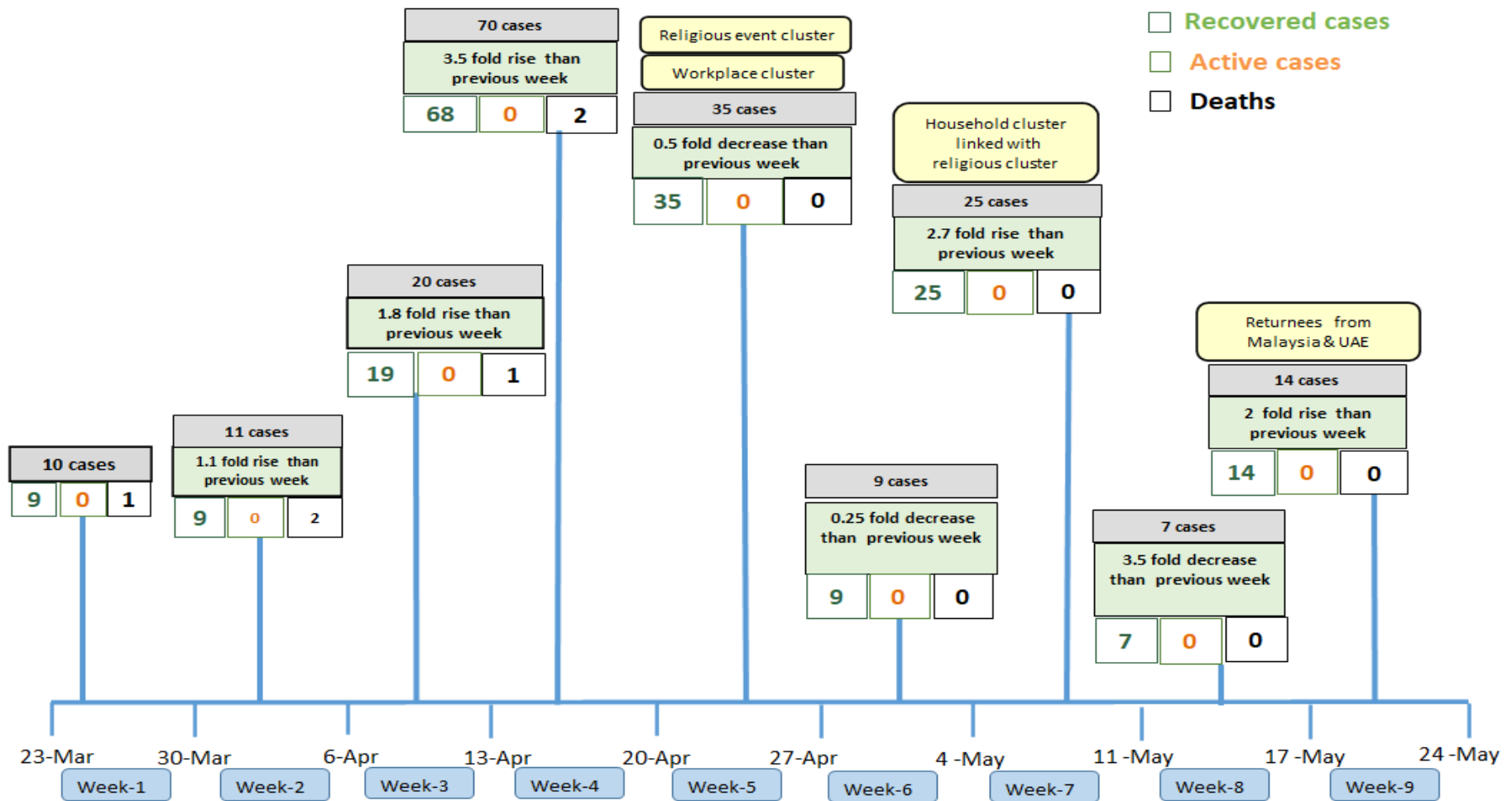


Total tested persons - 120,832

Total confirmed cases - 356

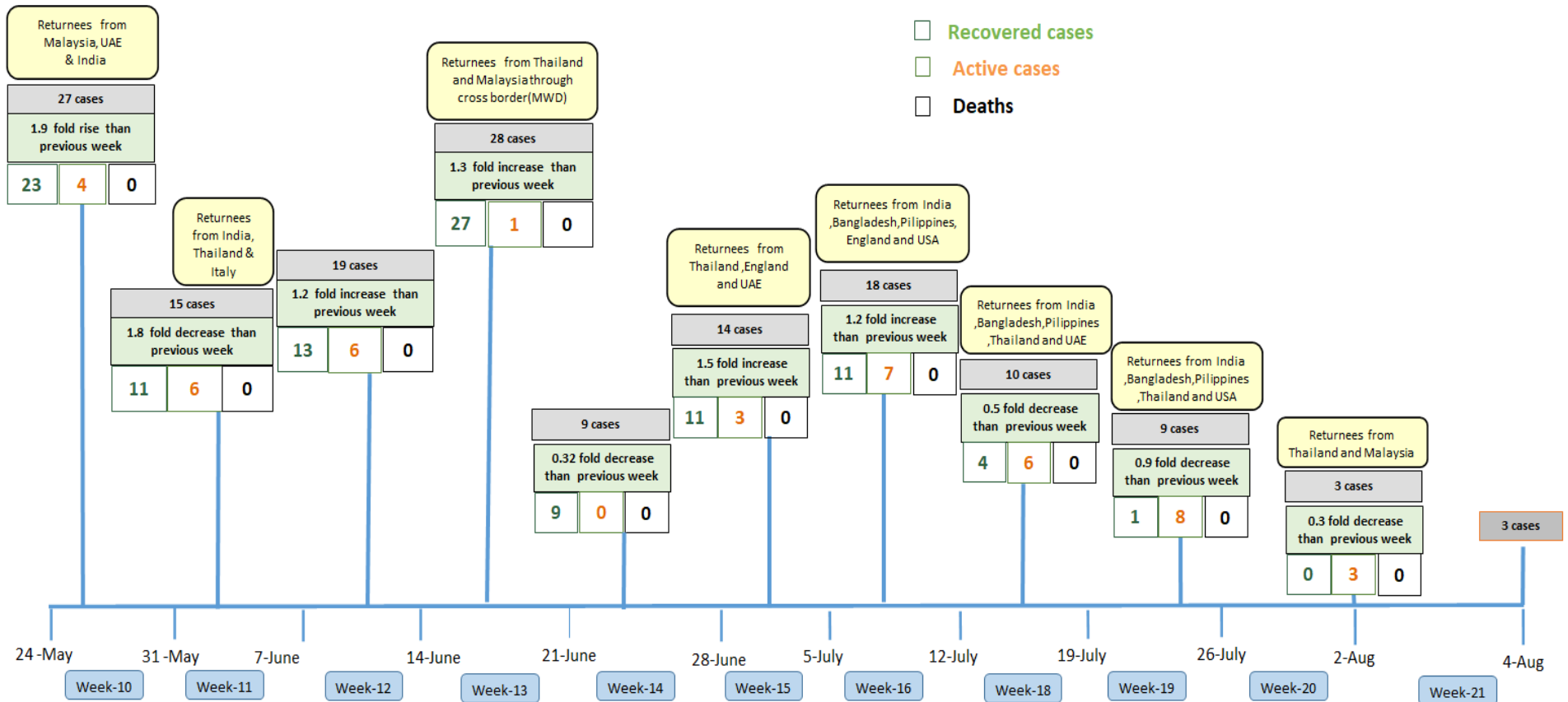
Tested person Confirmed case

Summary of new confirmed cases detection after first two cases (as of 4.8.2020)



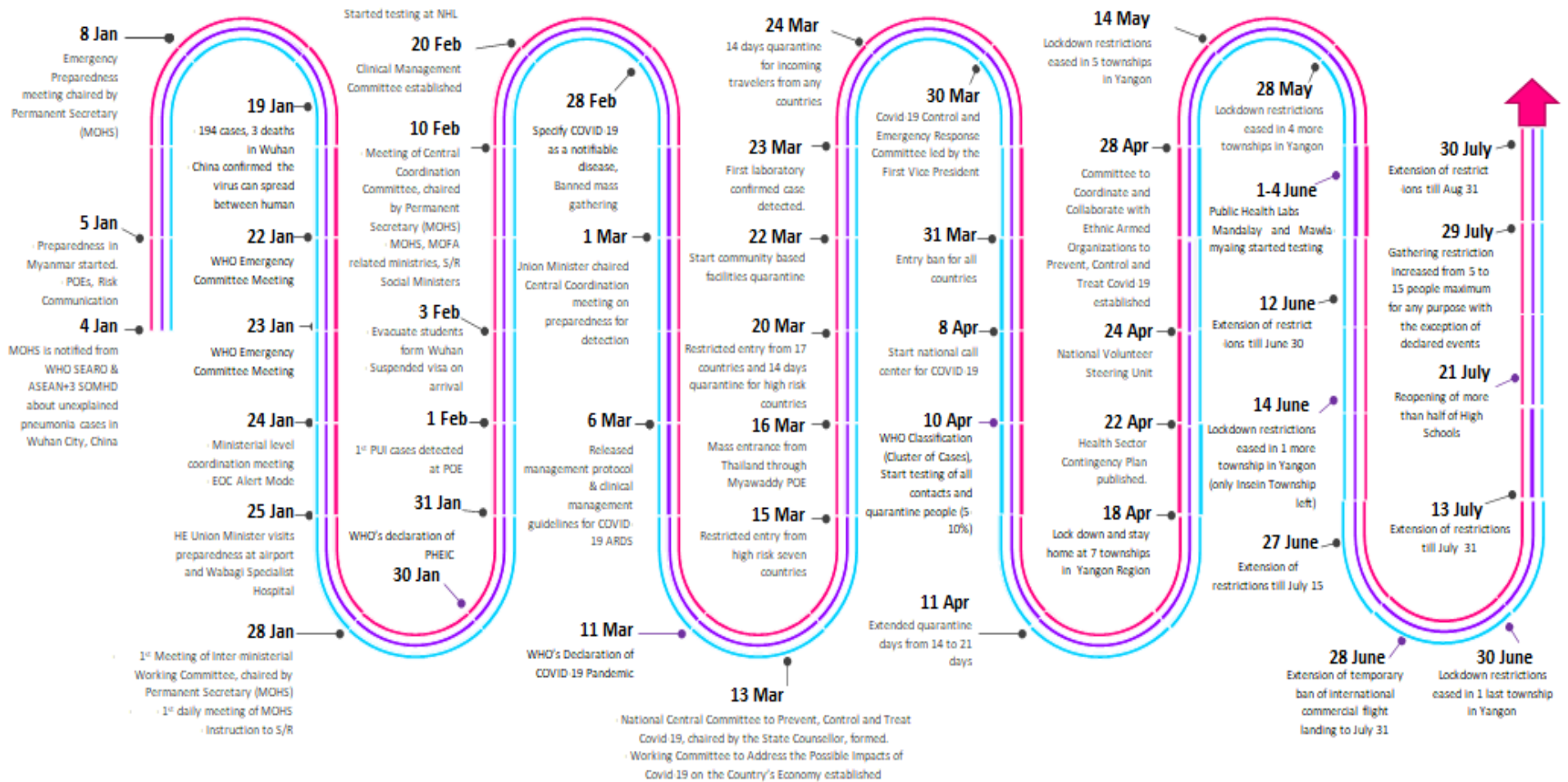
- Confirmed cases were detected as a peak in the 4th week after first confirmed cases due to the religious event cluster.
- Confirmed cases were decreased but still raised than the first 3 weeks due to the religious event cluster and workplace cluster.
- There were an increased in numbers of cases in the 7th week after the first two cases due to the household cluster linked with a religious cluster.
- Confirmed cases were detected by a nearly two-fold rise in the 9th and 10th weeks after the first two cases because of returnees coming back by relief flights.

Summary of new confirmed cases detection after first two cases (as of 3.8.2020)



- Confirmed cases were detected as a peak in the 4th week after first confirmed cases due to the religious event cluster.
- Confirmed cases were decreased but still raised than the first 3 weeks due to the religious event cluster and workplace cluster.
- There were an increased in numbers of cases in the 7th week after the first two cases due to the household cluster linked with a religious cluster.
- Confirmed cases were detected by a nearly two-fold rise in the 9th and 10th weeks after the first two cases because of returnees coming back by relief flights.

Timeline of Preparedness and Response to COVID-19 in Myanmar (as of 4.8.2020)



Data source - CEU, DMS, NHL, PHL (MDY and MLM), DMR, DSGH, State and Region Health Departments