



Ministry of Health and Sports (Myanmar)

Department of Public Health

Central Epidemiology Unit

(9 July 2020)

Situation Report - 93

Coronavirus Disease 2019 (COVID-19)

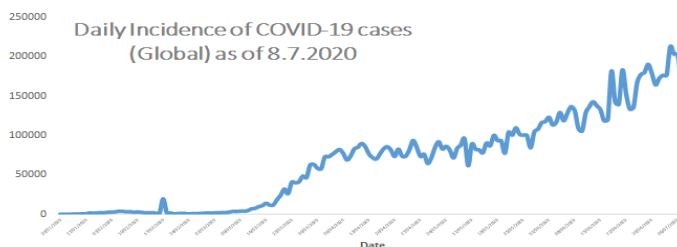
Data as reported by States and Regions by 8:30 PM MST 8 July 2020

Global Situation (WHO situation report - 170) data as of 14:30 MST 8 July 2020

Confirmed cases
11,669,259

Deaths
539,906

Case Fatality Rate
4.6 %



Myanmar Situation

Total Tested
88,234

Confirmed Cases
318

Negative
87,916

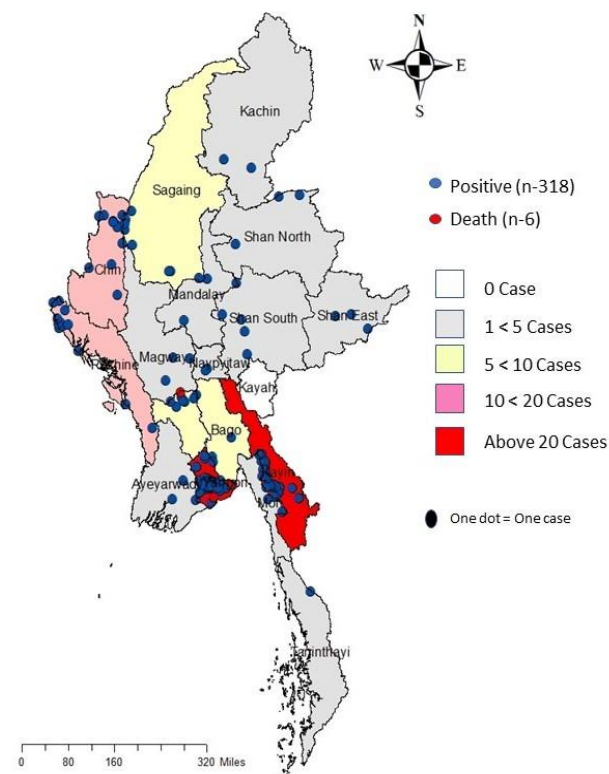
Recovered
254
79.8% of Confirmed cases

Active
58
18.2% of Confirmed cases

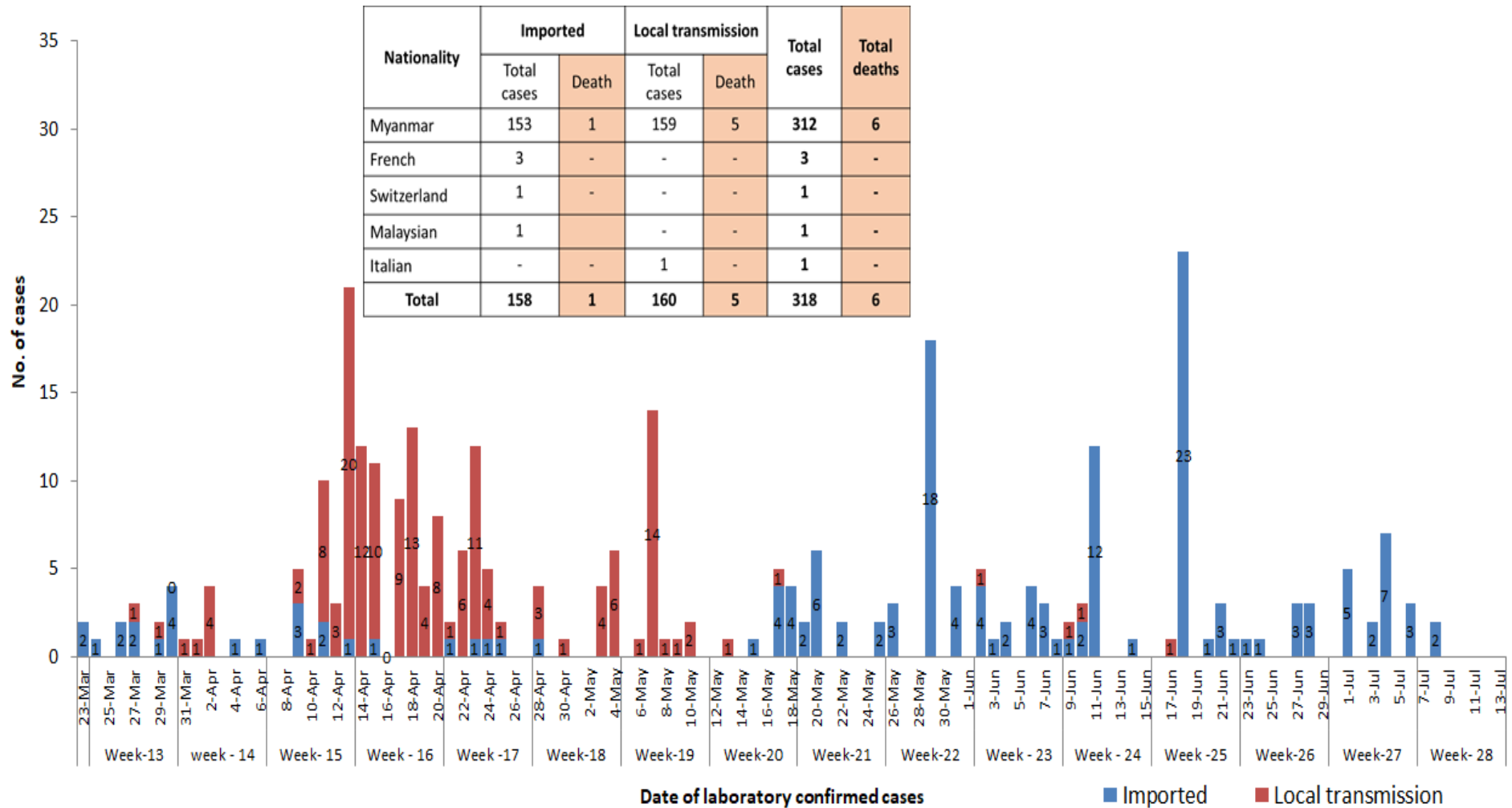
Death
6
1.8% of Confirmed cases

No	State/Region	COVID –19 Confirmed case	Recovered	Deaths
1	Yangon	226(1 New)	178 (2 New)	5
2	Kayin	26	18(2 New)	-
3	Rakhine	12	8	-
4	Chin	11(1 New)	10	-
5	Sagaing	9	8	-
6	Bago	9	7	1
7	Shan (South)	4	4	-
8	Mandalay	3	3	-
9	Shan (East)	3	4	-
10	Shan (North)	3	2	-
11	Magway	3	3	-
12	Naypyitaw	2	2	-
13	Ayeyarwaddy	2	2	-
14	Kachin	2	2	-
15	Mon	2	2	-
16	Thanintharyi	1	1	-
17	Kayah	-	-	-
Total		316(2 New)	254 (4 New)	6

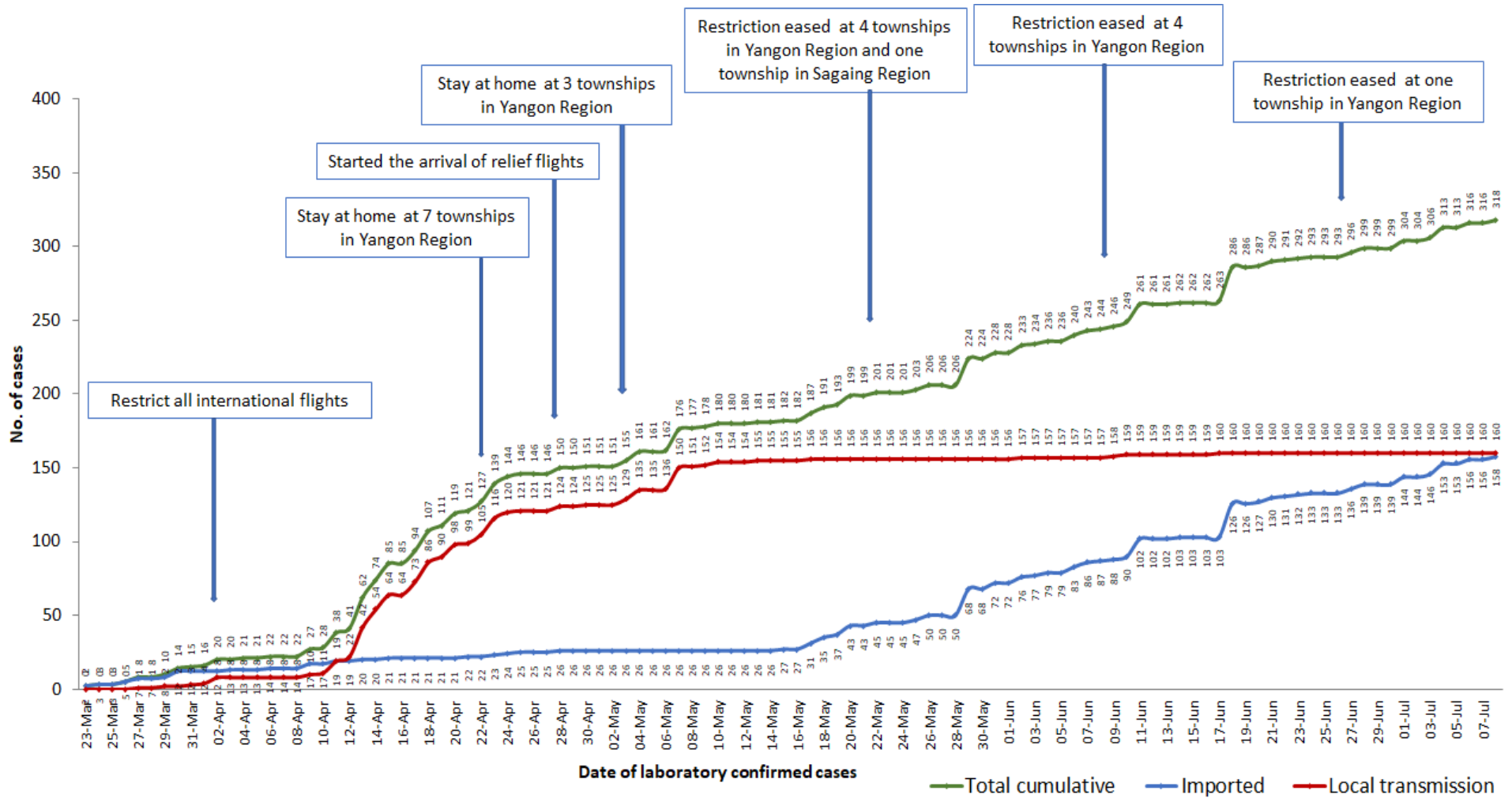
Map showing COVID-19 laboratory confirmed cases



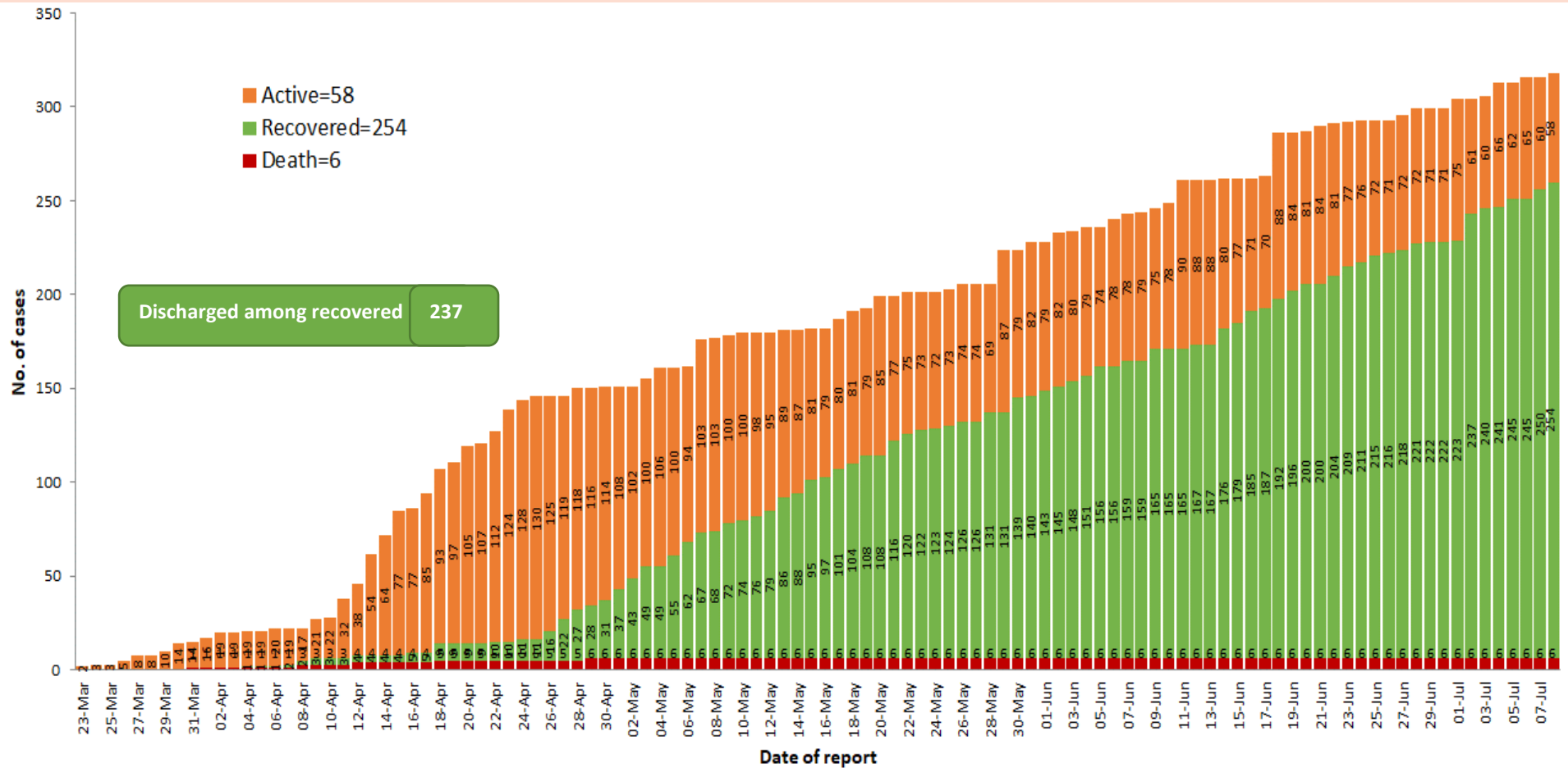
COVID-19 confirmed cases by types of transmissions (as of 8.7.2020, 8:30 pm) n=318



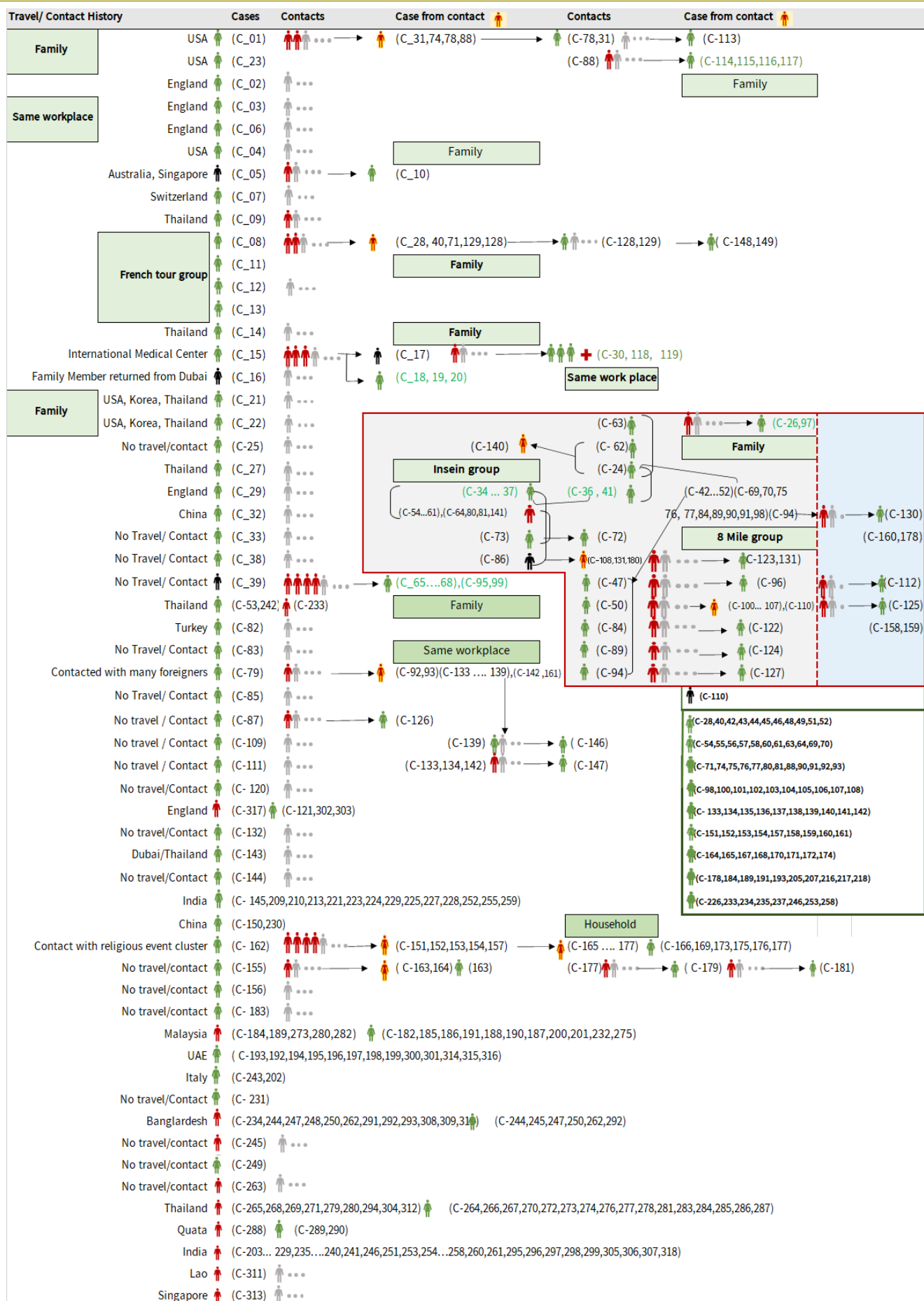
Total laboratory confirmed cases by date (as of 8.7.2020, 8:30 pm), n= 318



Cumulative Number of active confirmed cases, recovered and deaths (23.3.2020 – 8.7.2020), n (cumulative)=318



Summary of COVID-19 confirmed cases (as of 8.7.2020), n (contacts)= 5,695



Summary of current situation		
Type	New (7.7.2020-8.7.2020)	Total (on 8.7.2020)
Suspected and Person Under Investigation (PUI)	46	211
Hospital Quarantine	8	62
Facility Quarantine	1,395	23,780

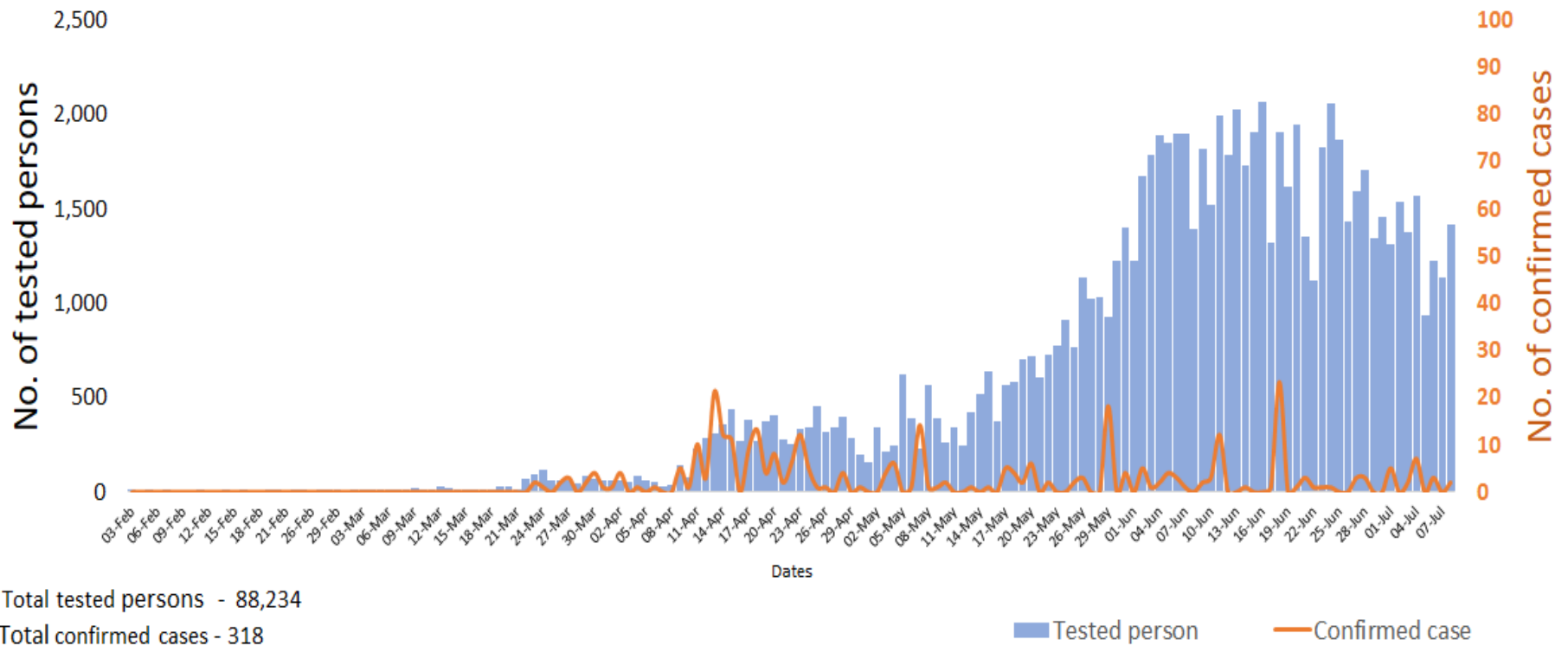
Person under Investigation (PUI) by State/Region hospitals (31.1.2020 – 8.7.2020) n= 6,233

No.	State/Region	PUI
1	Yangon	3,160
2	Mandalay	1,244
3	Kayin	251
4	Mon	234
5	Shan (N)	213
6	Magway	204
7	Bago	180
8	Shan (E)	120
9	Ayeyarwaddy	102
10	Shan (S)	99
11	Sagaing	89
12	Kayah	76
13	Rakhine	68
14	Thanintharyi	67
15	Naypyitaw	63
16	Kachin	36
17	Chin	27
Total		6,233

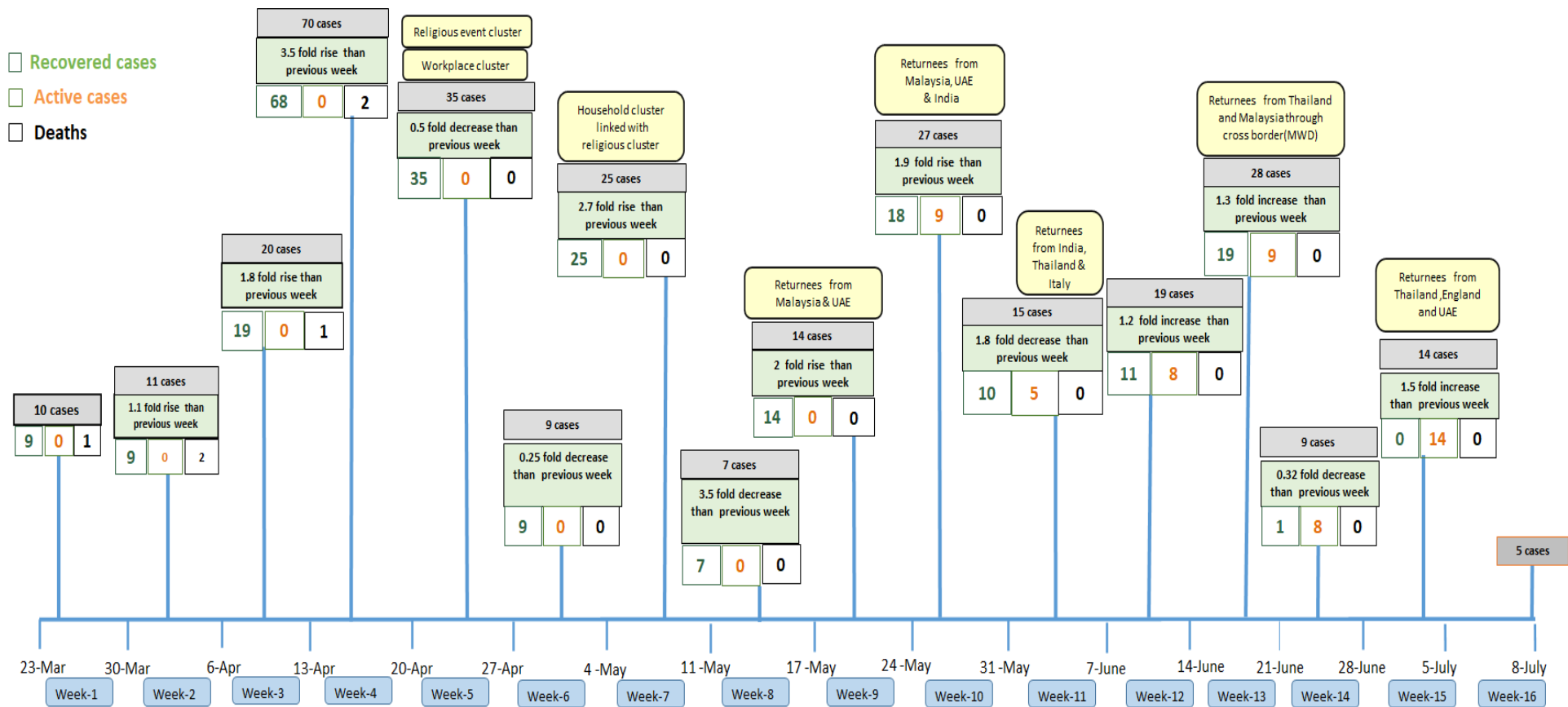
No. of Facility Quarantine sites and Quarantined people on 8.7.2020

No.	State/Region	No. of facilities	Total no. of quarantine
1	Yangon	72	4,425
2	Bago	281	3,301
3	Kayin	373	2,689
4	Mon	260	2,627
5	Magway	2,571	2,138
6	Mandalay	116	1,322
7	Kachin	417	1,203
8	Sagaing	969	1,155
9	Tanintharyi	189	1,141
10	Rakhine	274	1014
11	Shan South	117	847
12	Ayeyarwaddy	180	839
13	Naypyitaw	2	481
14	Shan North	248	206
15	Chin	16	165
16	Shan East	11	121
17	Kayah	18	106
Total		6,114	23,780

COVID-19 confirmed cases among tested by date (as of 8.7.2020)

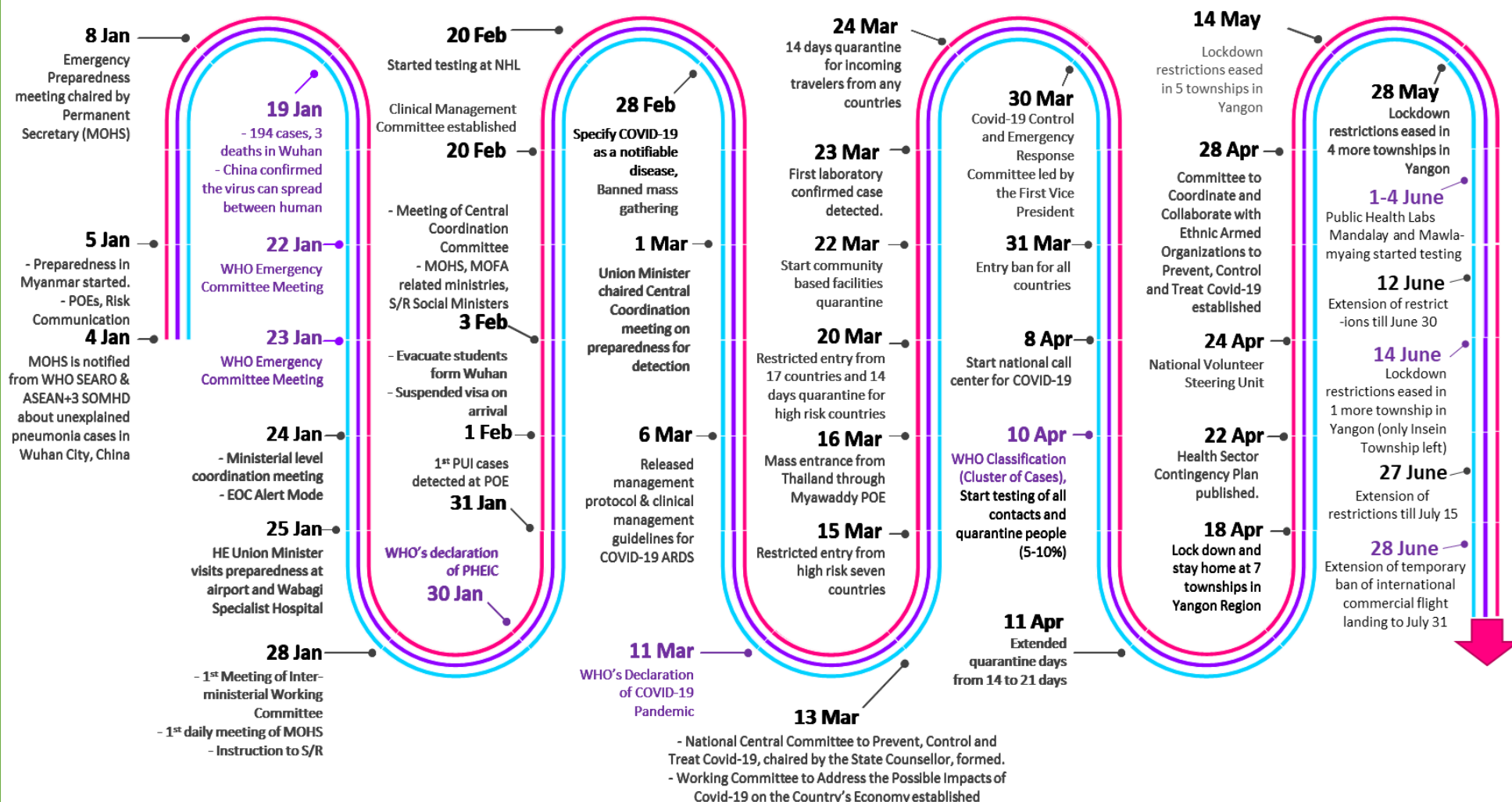


Summary of new confirmed cases detection after first two cases (as of 8.7.2020)



- Confirmed cases were detected as a peak in the 4th week after first confirmed cases due to the religious event cluster.
- Confirmed cases were decreased but still raised than the first 3 weeks due to the religious event cluster and workplace cluster.
- There were an increased in numbers of cases in the 7th week after the first two cases due to the household cluster linked with a religious cluster.
- Confirmed cases were detected by a nearly two-fold rise in the 9th and 10th weeks after the first two cases because of returnees coming back by relief flights.

Timeline of Preparedness and Response to COVID-19 in Myanmar (as of 8.7.2020)



Hotline Number— 0673 420 268

Data source - CEU, DMS, NHL, PHL (MDY and MLM), DMR, DSGH, State and Region Health Departments