



# Ministry of Health and Sports (Myanmar)

## Department of Public Health

### Central Epidemiology Unit

(2 October 2020)

#### Coronavirus Disease 2019 (COVID-19)

Situation Report - 178

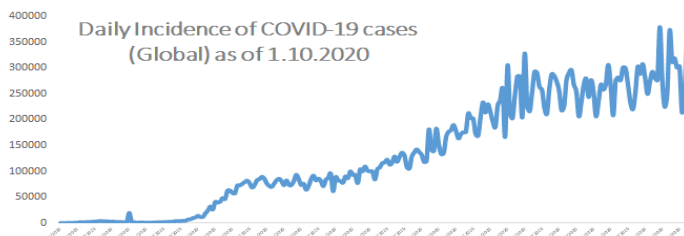
Data as reported by States and Regions by 1 October 2020

WHO Coronavirus Disease (COVID-19) Dashboard data as of 5:15 PM CEST 1 October 2020

**Confirmed cases**  
**33,842,281**

**Deaths**  
**1010,634**

**Case Fatality Rate**  
**3%**



#### Myanmar Situation

**Total Tested**  
**271,881**

**Confirmed Cases**  
**14,383**

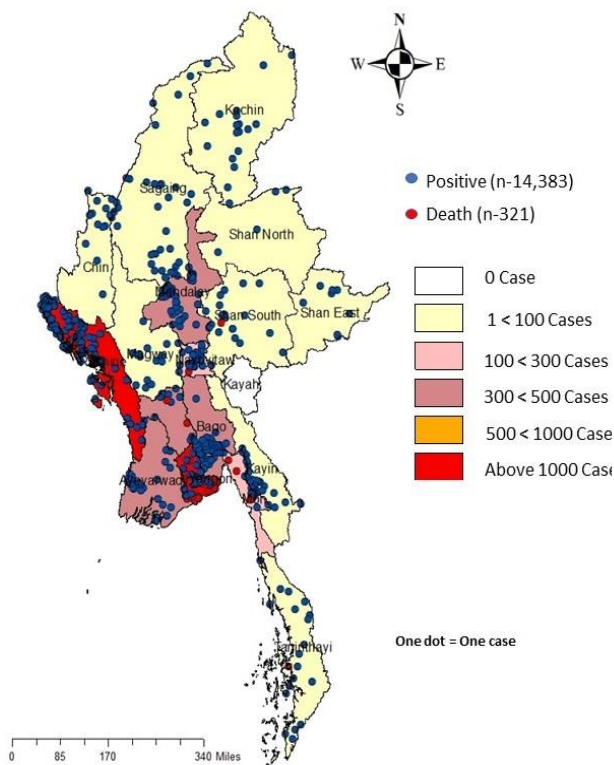
**Negative**  
**257,498**

**Discharged**  
**4,156**  
28.9% of Confirmed cases

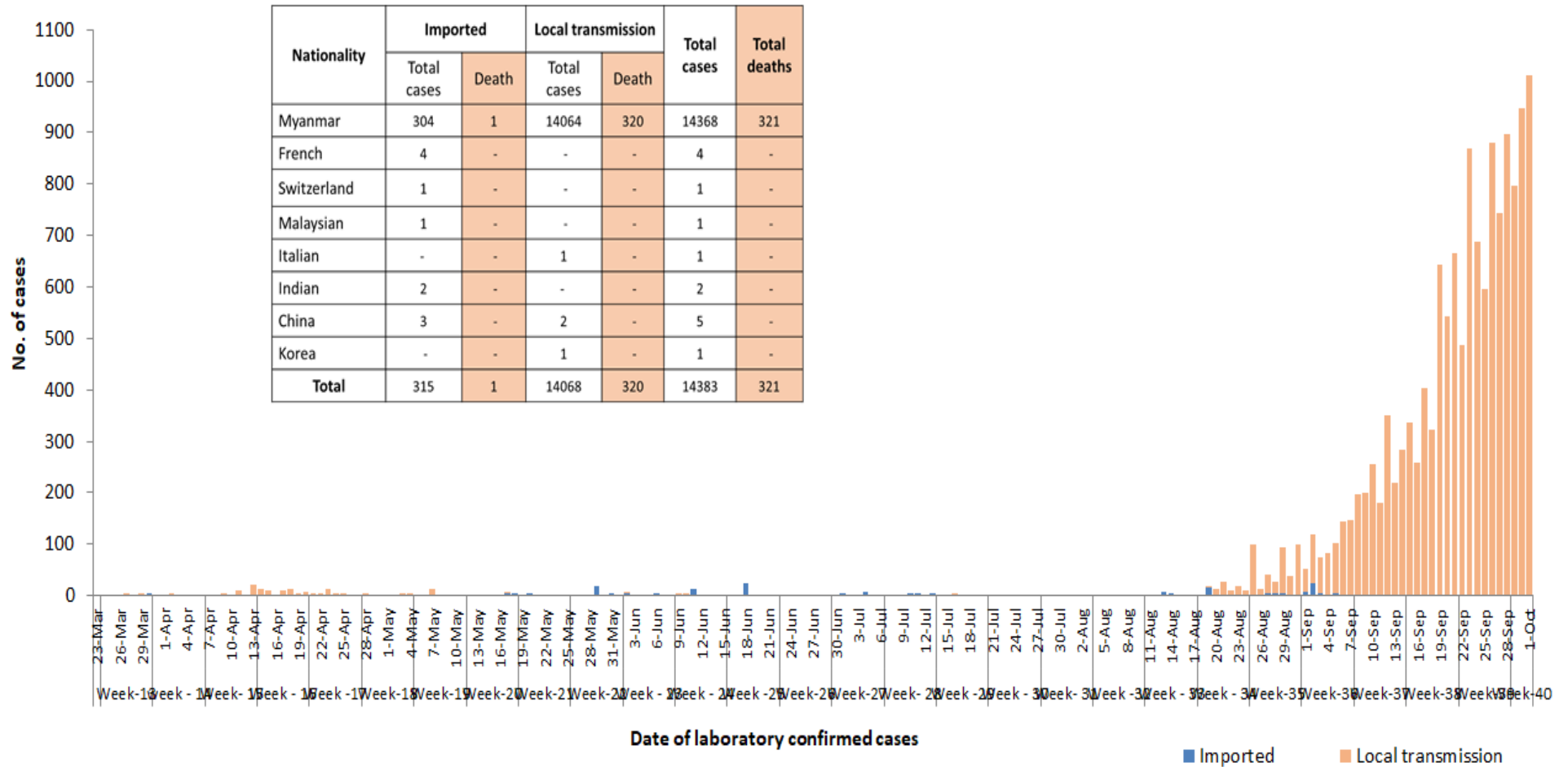
**Death**  
**321**  
2.2% of Confirmed cases

No	State/Region	COVID -19 Confirmed case	New confirmed cases within 24 hours	Deaths
1	Yangon	10,947	862	302
2	Rakhine	1,581	13	3
3	Bago	393	7	3
4	Mandalay	349	46	1
5	Ayeyarwaddy	346	36	-
6	Mon	290	16	6
7	Naypyitaw	136	5	3
8	Sagaing	91	14	-
9	Kachin	50	-	-
10	Kayin	49	4	1
11	Magway	44	1	-
12	Chin	39	1	-
13	Thanintharyi	37	5	1
14	Shan (South)	20	-	1
15	Shan (East)	6	-	-
16	Shan (North)	5	-	-
17	Kayah	-	-	-
<b>Total</b>		<b>14,383</b>	<b>1,010</b>	<b>321</b>

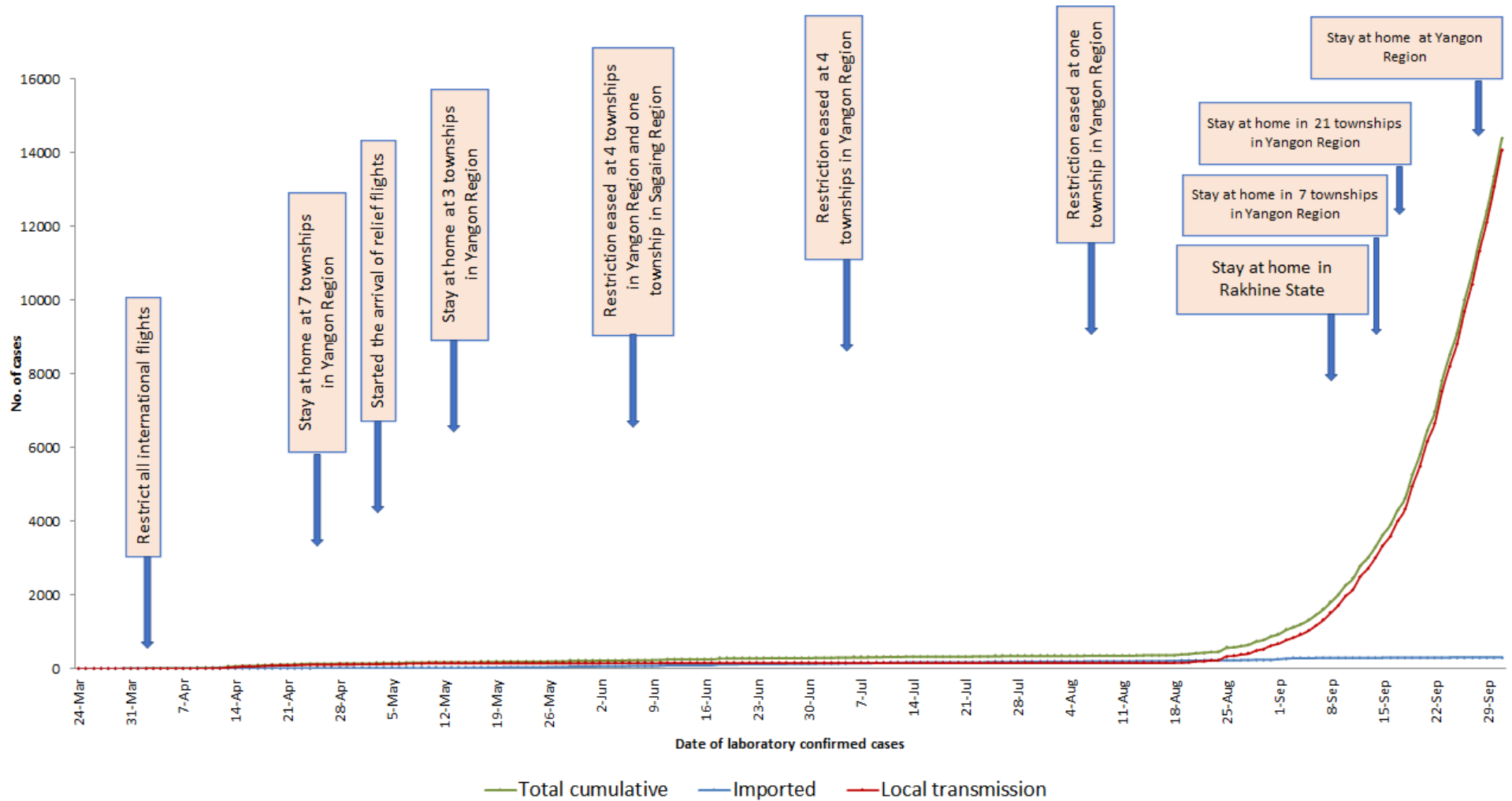
Map showing COVID-19 laboratory confirmed cases



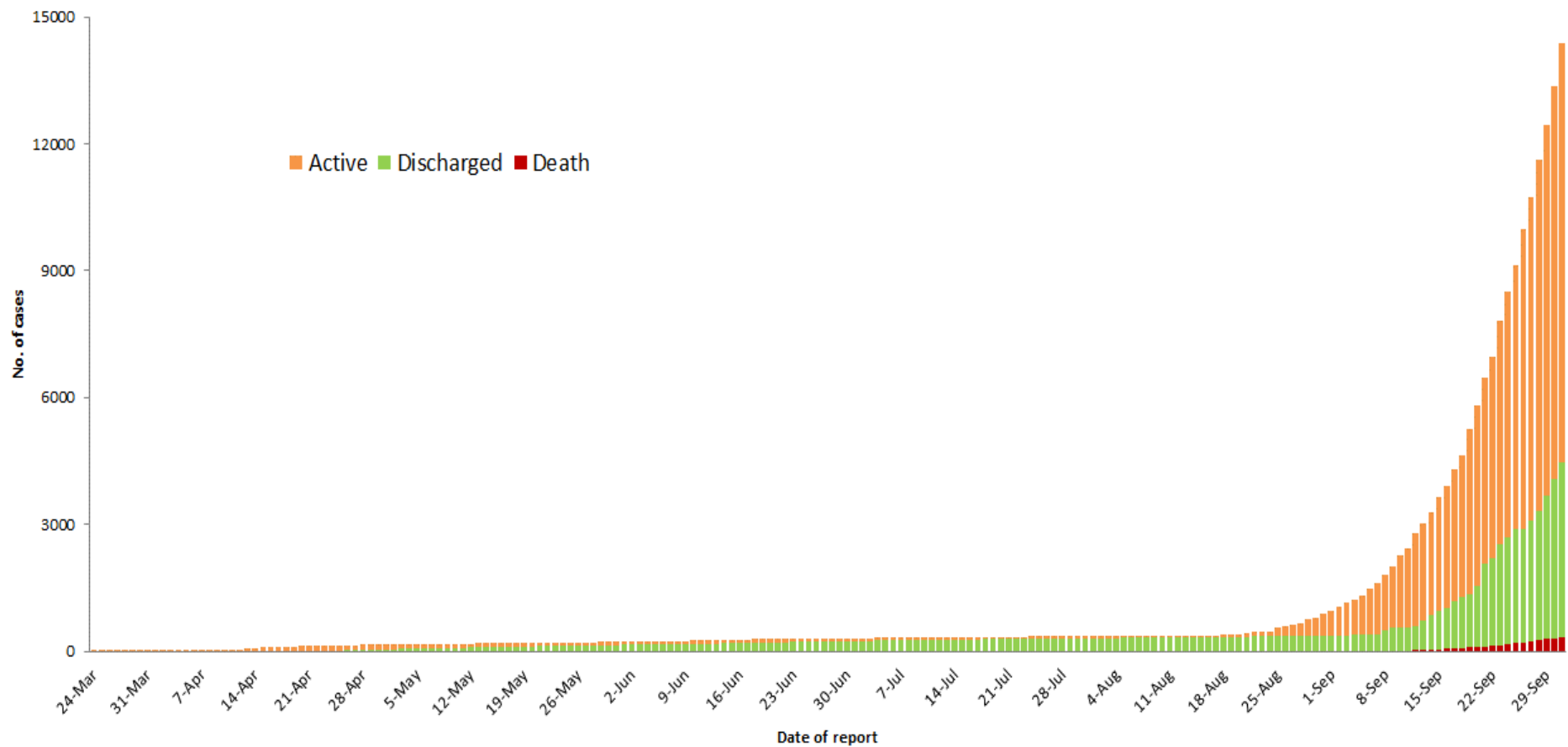
## COVID-19 confirmed cases by types of transmissions (as of 1.10.2020) n=14,383



## Total laboratory confirmed cases by date (as of 1.10.2020), n= 14,383



**Cumulative Number of active confirmed cases, recovered and deaths (23.3.2020 – 1.10.2020), n (cumulative)=14,383**

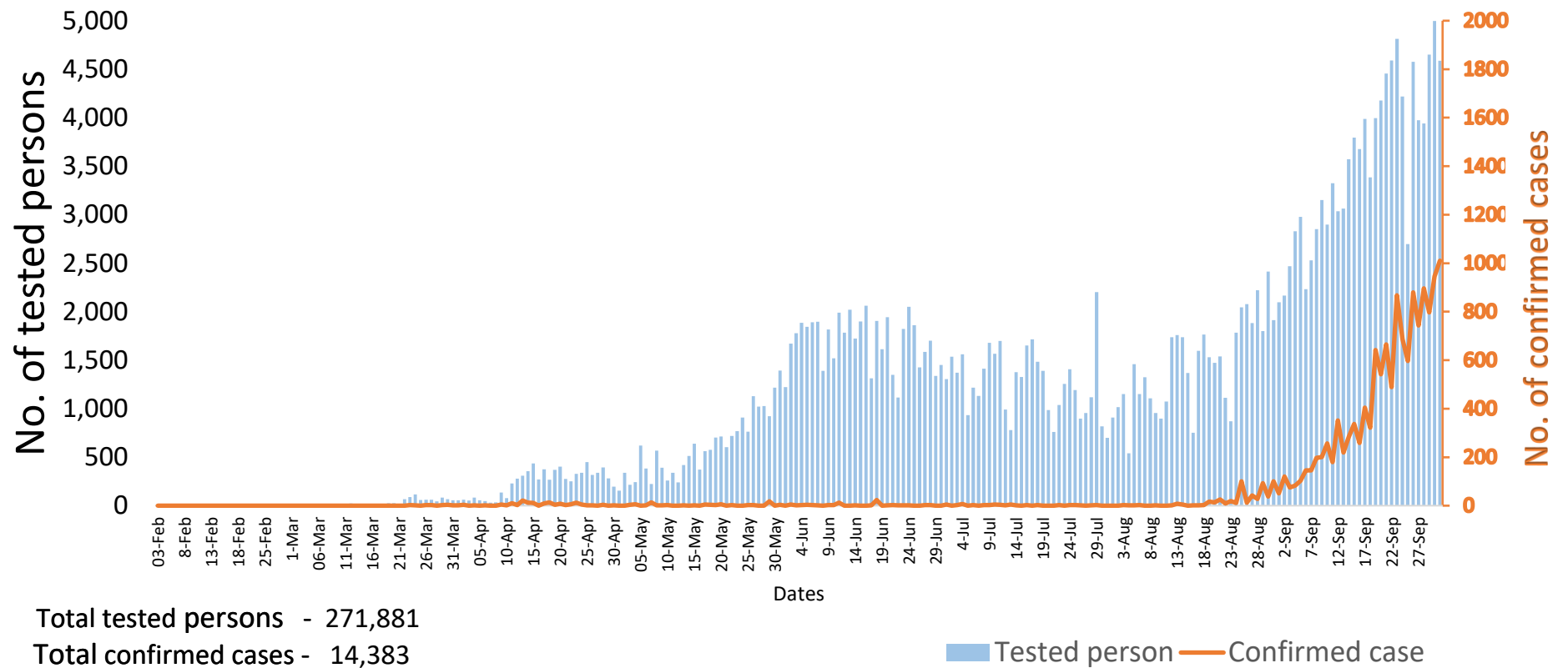


Summary of current situation		
Type	New (30.9.2020-1.10.2020)	Total (on 1.10.2020)
Suspected and Person Under Investigation (PUI)	425	1467
Hospital Quarantine	46	331
Facility Quarantine	2,323	44,863

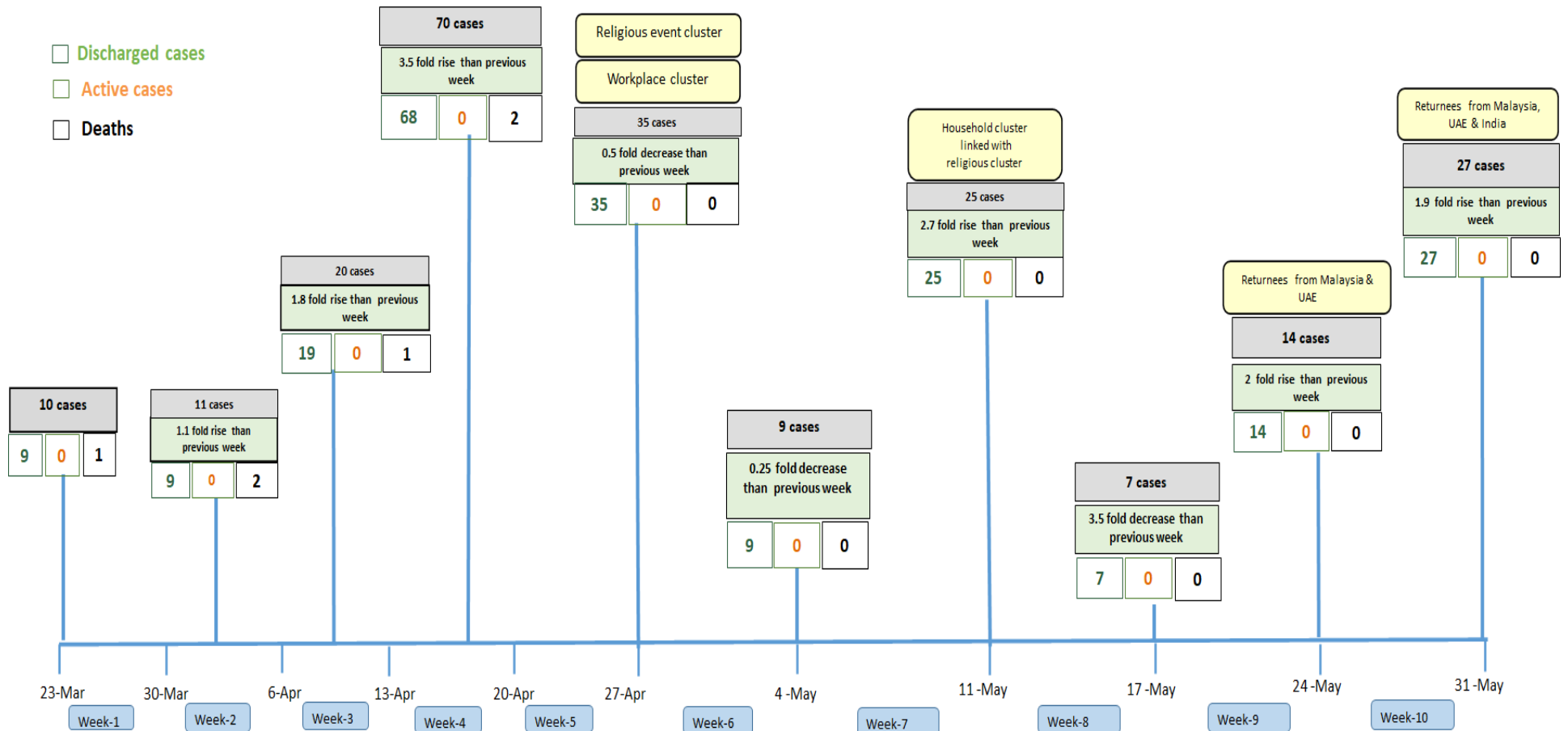
Person under Investigation (PUI) by State/Region hospitals (31.1.2020 – 1.10.2020) n= 16,583			No. of Facility Quarantine sites and Quarantined people on 1.10.2020			
No.	State/Region	PUI	No.	State/Region	No. of facilities	Total no. of quarantine
1	Yangon	10420	1	Bago	1085	8781
2	Mandalay	2392	2	Ayeyarwaddy	1143	6202
3	Mon	666	3	Magway	632	4589
4	Kayin	477	4	Yangon	87	4581
5	Magway	409	5	Sagaing	665	4302
6	Rakhine	345	6	Mon	99	2807
7	Shan (N)	338	7	Mandalay	382	2800
8	Bago	332	8	Kachin	254	2533
9	Ayeyarwaddy	314	9	Kayin	372	2037
10	Shan (S)	148	10	Rakhine	305	1631
11	Thanintharyi	147	11	Shan South	115	1179
12	Shan (E)	140	12	Tanintharyi	153	940
13	Sagaing	131	13	Shan North	386	888
14	Naypyitaw	103	14	Naypyitaw	10	736
15	Kayah	87	15	Kayah	12	383
16	Kachin	83	16	Chin	26	327
17	Chin	51	17	Shan East	19	147
Total		16,583	Total		5,745	44,863

\*Facility quarantine rule changed from 21 days to 14 days on 11-9-2020 while 7 days home quarantine rule remain unchanged.

## COVID-19 confirmed cases among tested by date (as of 1.10.2020)

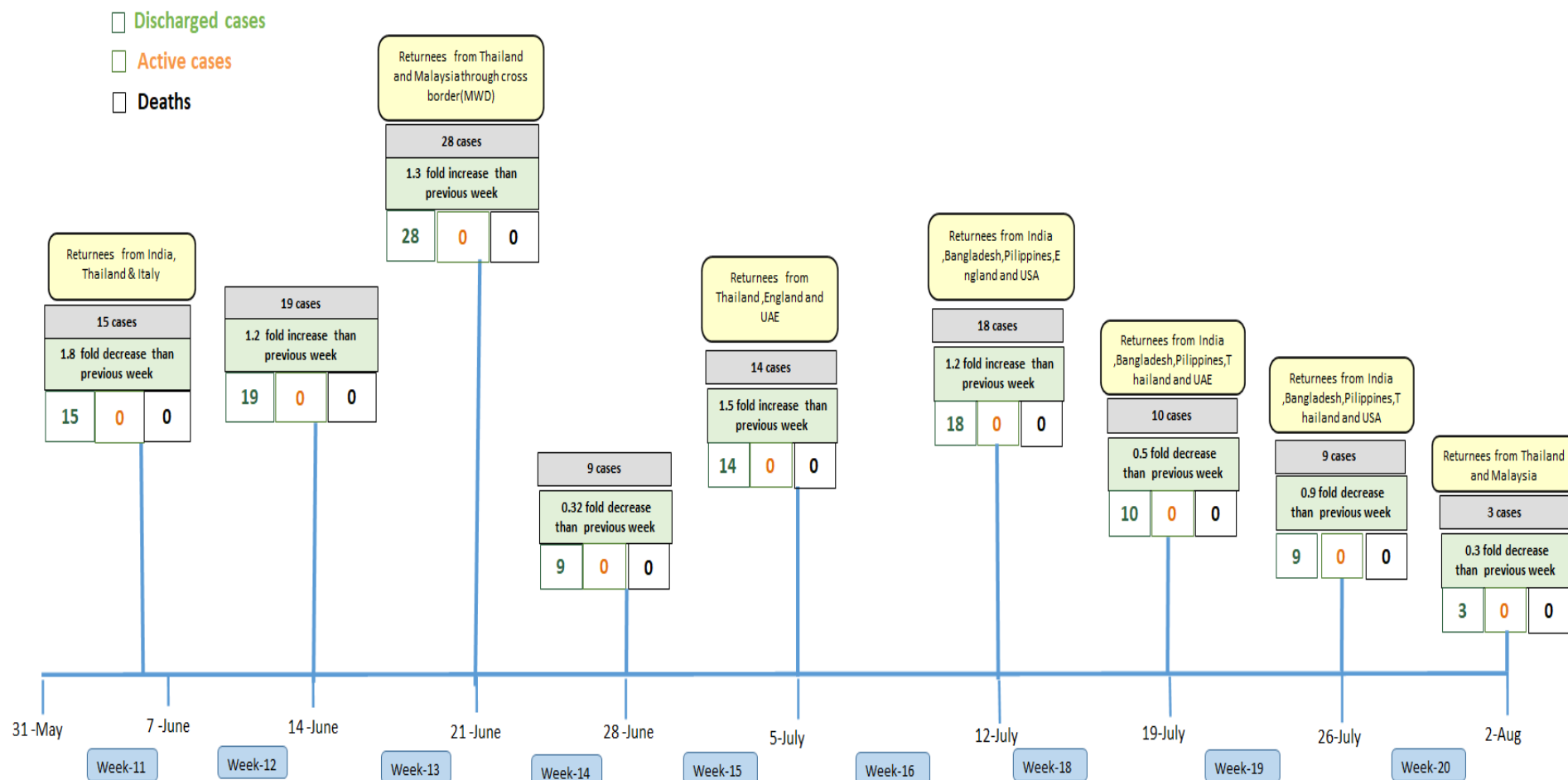


# Summary of new confirmed cases detection after first two cases (as of 1.10.2020)



- Confirmed cases were detected as a peak in the 4th week after first confirmed cases due to the religious event cluster.
- Confirmed cases were decreased but still raised than the first 3 weeks due to the religious event cluster and workplace cluster.
- There were an increased in numbers of cases in the 7th week after the first two cases due to the household cluster linked with a religious cluster.
- Confirmed cases were detected by a nearly two-fold rise in the 9th and 10th weeks after the first two cases because of returnees coming back by relief flights.

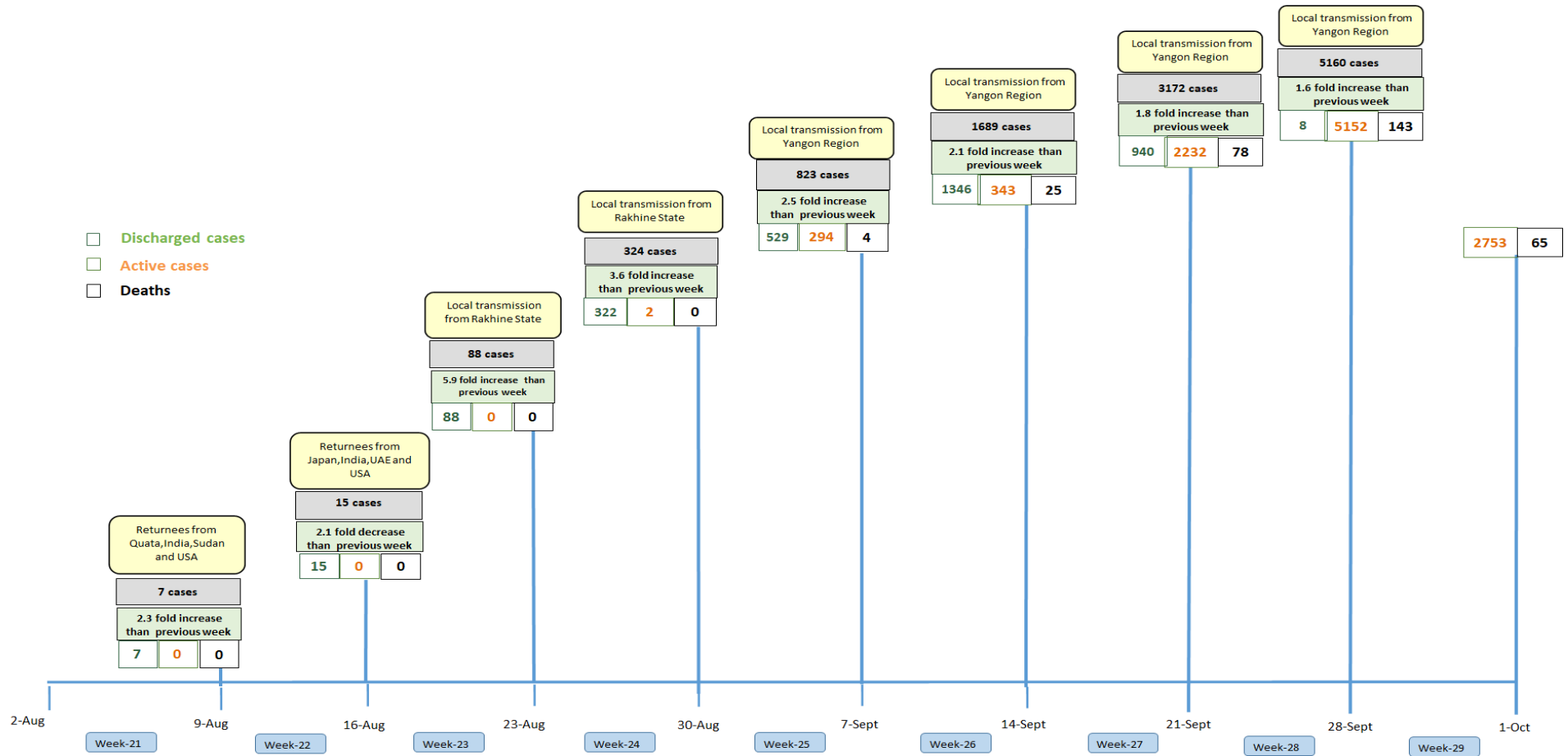
# Summary of new confirmed cases detection after first two cases (as of 1.10.2020)



- Confirmed cases were detected as a peak in the 4th week after first confirmed cases due to the religious event cluster.
- Confirmed cases were decreased but still raised than the first 3 weeks due to the religious event cluster and workplace cluster.
- There were an increased in numbers of cases in the 7th week after the first two cases due to the household cluster linked with a religious cluster.
- Confirmed cases were detected by a nearly two-fold rise in the 9th and 10th weeks after the first two cases because of returnees coming back by relief flights.

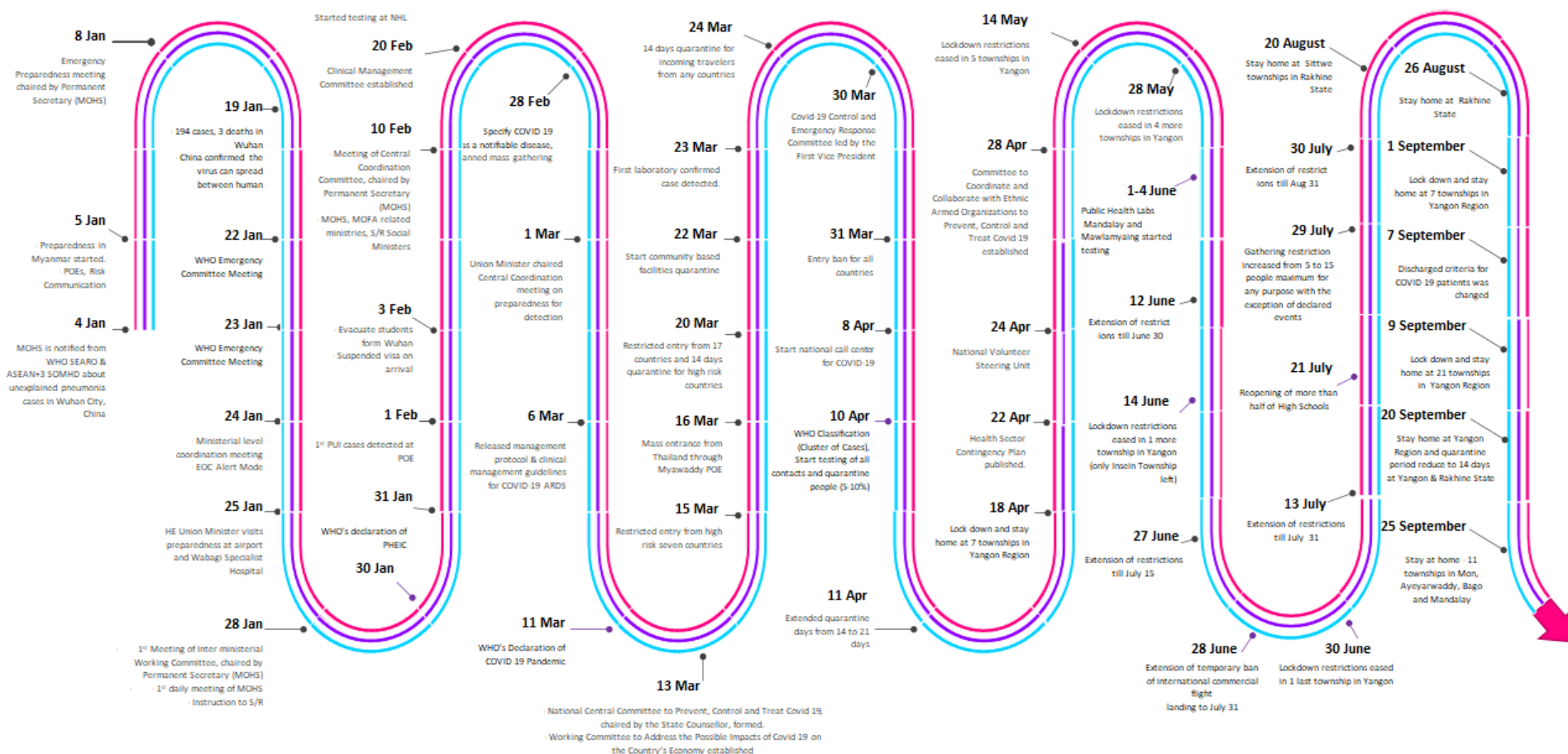


# Summary of new confirmed cases detection after first two cases (as of 1.10.2020)



- Confirmed cases were detected as a peak in the 4th week after first confirmed cases due to the religious event cluster.
- Confirmed cases were decreased but still raised than the first 3 weeks due to the religious event cluster and workplace cluster.
- There were an increased in numbers of cases in the 7th week after the first two cases due to the household cluster linked with a religious cluster.
- Confirmed cases were detected by a nearly two-fold rise in the 9th and 10th weeks after the first two cases because of returnees coming back by relief flights.

# Timeline of Preparedness and Response to COVID-19 in Myanmar (as of 1.10.2020)



Hotline Number— 0673 420 268

Data source - CEU, DMS, NHL, PHL (MDY and MLM), DMR, DSGH, State and Region Health Departments