



Ministry of Health and Sports (Myanmar)

Department of Public Health

Central Epidemiology Unit

(22 May 2020)

Coronavirus Disease 2019 (COVID-19)

Situation Report - 45

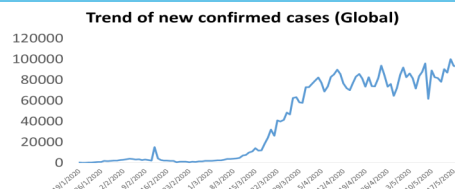
Data as reported by States and Regions by 12:00 Midnight MST 21 May 2020

Global Situation
(WHO situation report - 121)
data as of 14:30 MST 20 May 2020

Confirmed cases
4,893,186

Deaths
323,256

Case Fatality Rate
6.6 %



Myanmar

Total tested
17,674

Confirmed cases
199

Negative
16,953

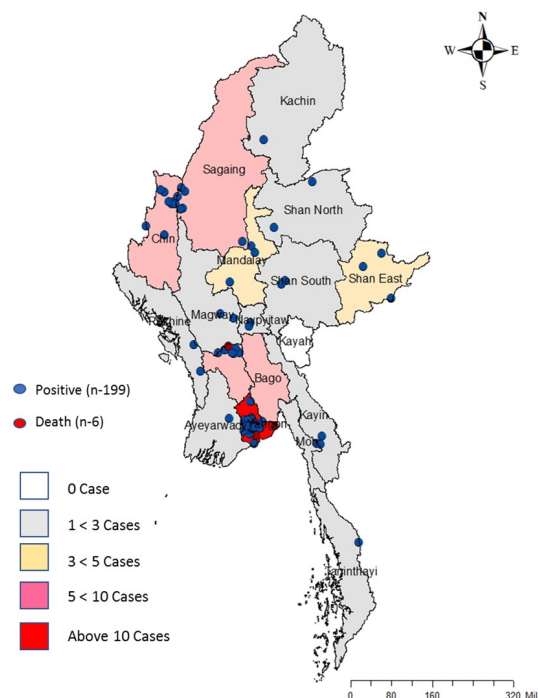
Recovered
116
58 % of confirmed cases

Active
77
39% of confirmed cases

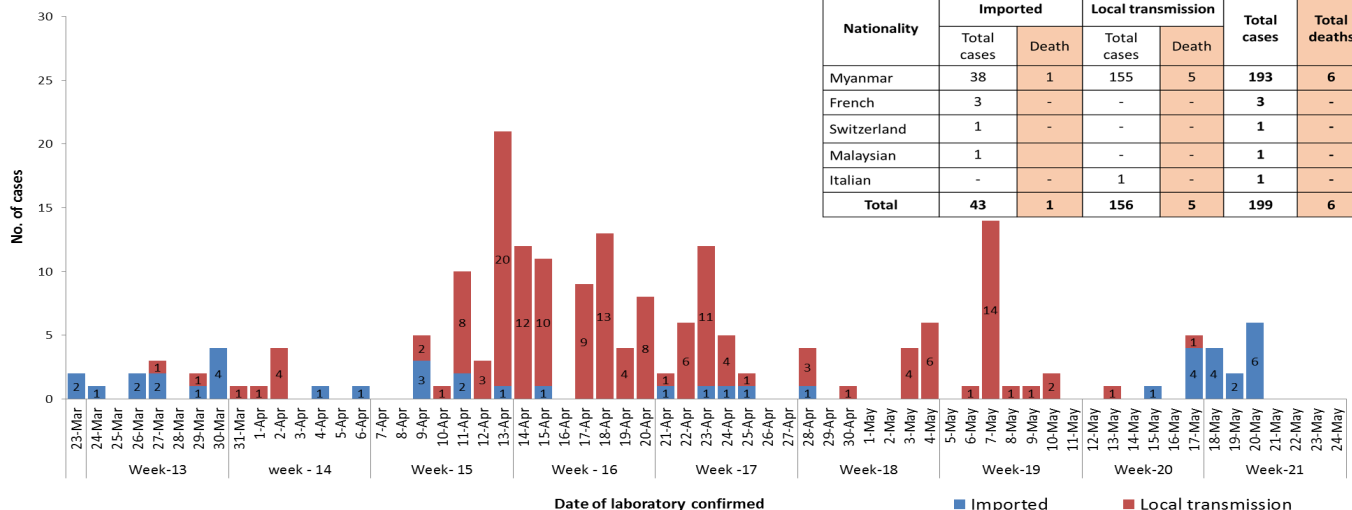
Death
6
3% of confirmed cases

No.	State/Region	COVID -19 Confirmed case	Recovered	Deaths
1.	Yangon	156 (6 new)	89 (7 new)	5
2.	Bago	7	5	1
3.	Sagaing	7	6	-
4.	Chin	7	2	-
5.	Shan(East)	3	2 (1 new)	-
6.	Mandalay	3	3	-
7.	Shan(South)	2	2	-
8.	Shan(North)	2	2	-
9.	Naypyitaw	2	2	-
10.	Kayin	2	-	-
11.	Magway	2	1	-
12.	Rakhine	2	-	-
13.	Mon	1	1	-
14.	Kachin	1	1	-
15.	Thanintharyi	1	-	-
16.	Ayeyarwady	1	-	-
17.	Kayah	-	-	-
Total		199 (6 new)	116 (8 new)	6

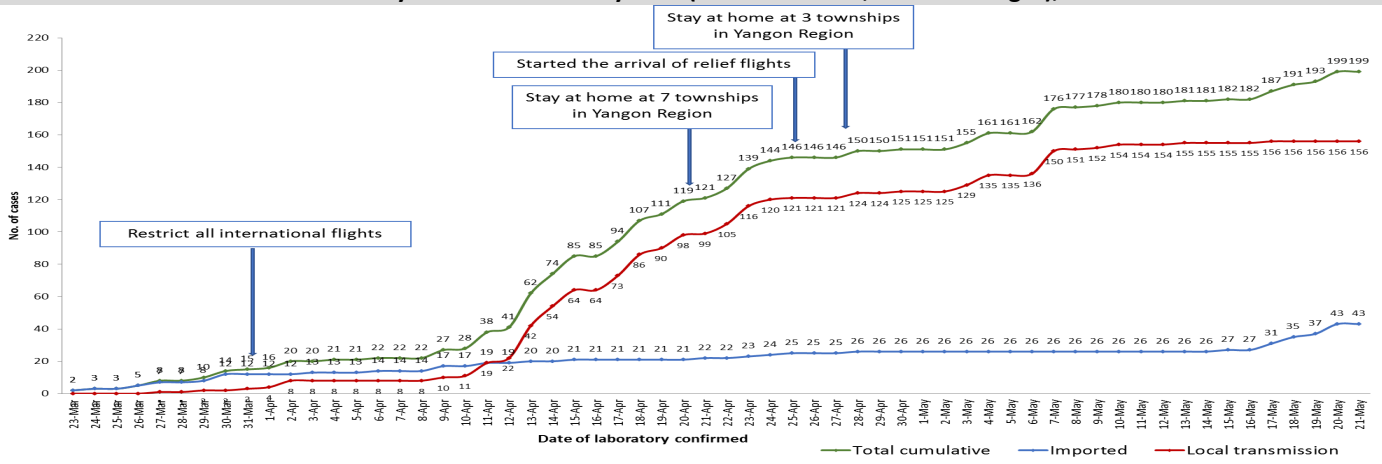
Map showing COVID-19 laboratory confirmed cases



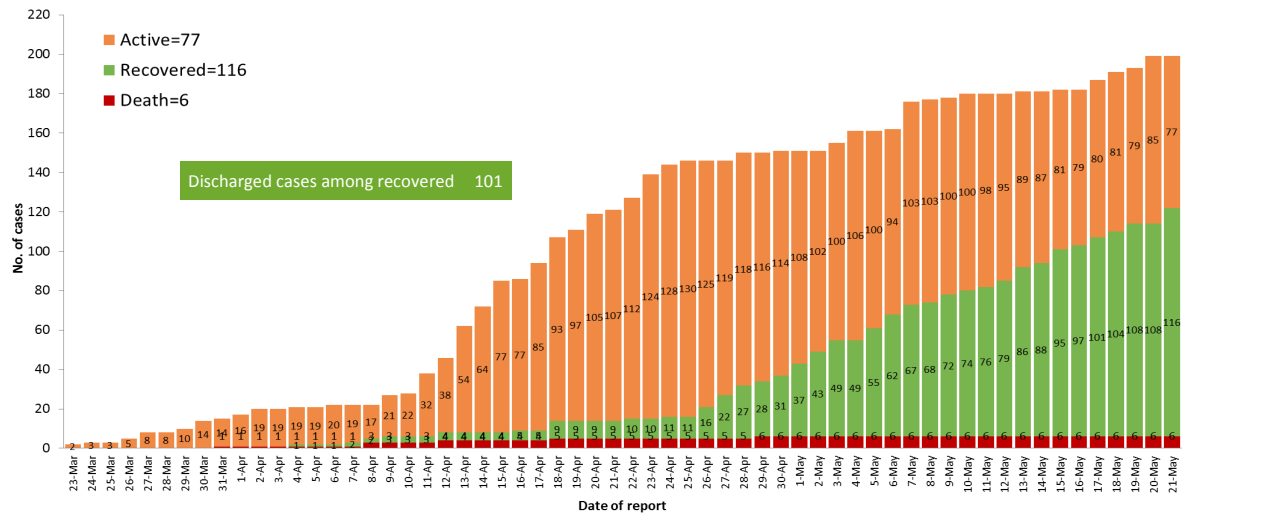
COVID-19 confirmed cases by types of transmissions (as of 21-5-2020,12:00 midnight) n=199



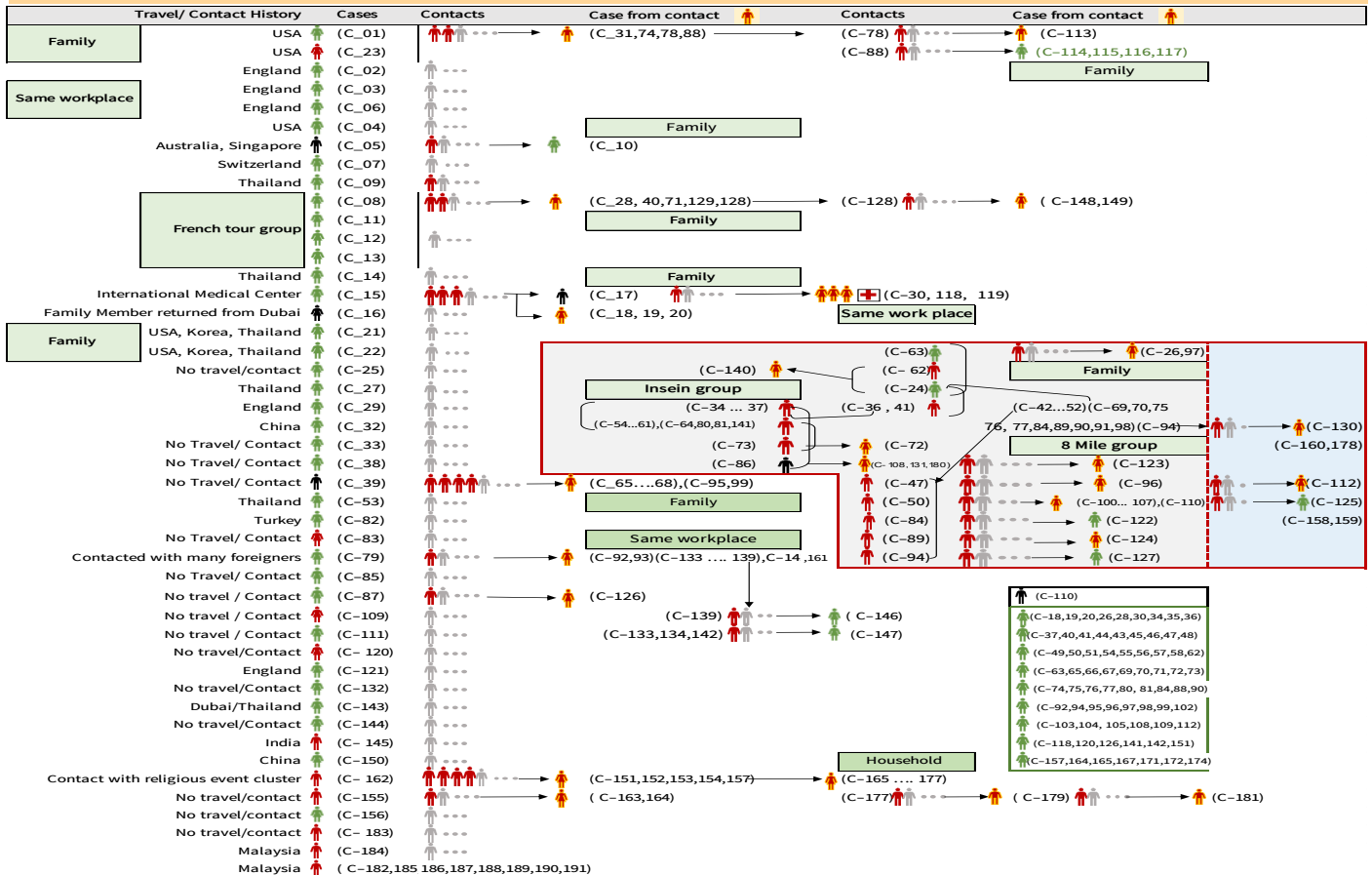
Total laboratory confirmed cases by date (as of 21.5.2020, 12:00 Midnight), n= 199



Cumulative Number of active confirmed cases, recovered and death (23.3.2020-21.5.2020), n=199



Summary of COVID-19 confirmed cases (as of 21-5-2020), n= 3,944



Summary of current situation

Type	New (20.5.2020–21.5.2020)	Total (on 21.5.2020)
Suspected and Person Under Investigation (PUI)	38	315
Hospital Quarantine	7	120
Facility Quarantine	2,161	60,783

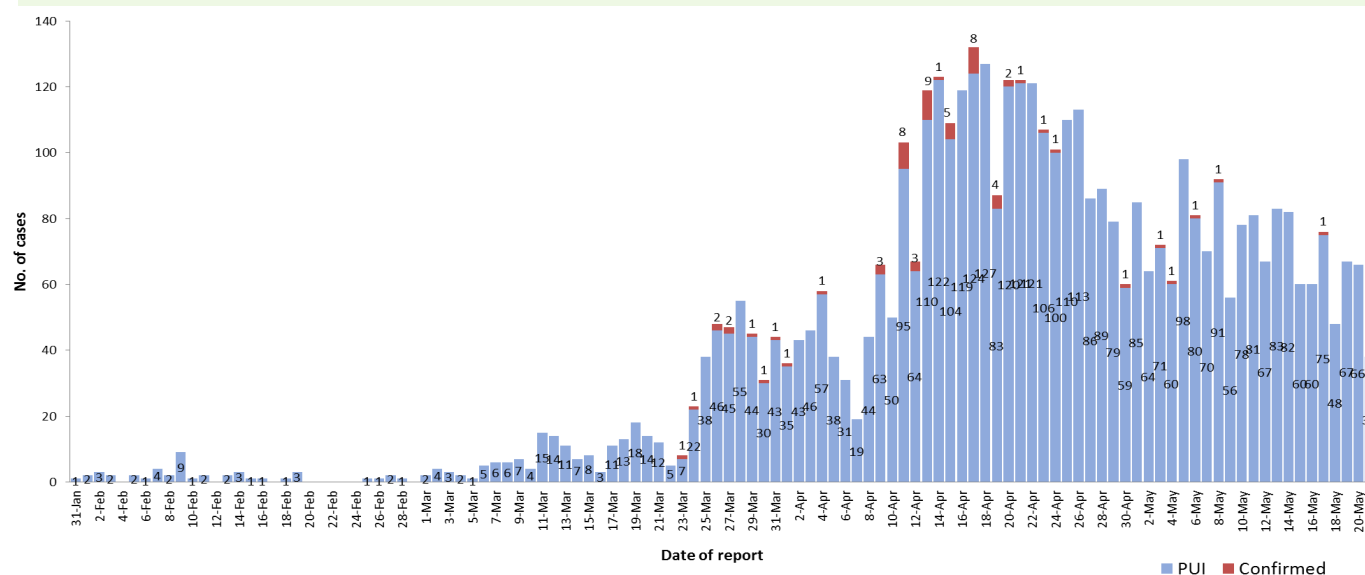
Person under Investigation (PUI) by State/Region hospitals (31.1.2020 – 21.5.2020) n= 4,563

No.	State/Region	PUI
1.	Yangon	2,361
2.	Mandalay	794
3.	Shan (N)	176
4.	Bago	168
5.	Mon	156
6.	Magway	152
7.	Kayin	147
8.	Shan (E)	93
9.	Ayeyarwaddy	92
10.	Shan (S)	81
11.	Sagaing	73
12.	Kayah	66
13.	Naypyitaw	59
14.	Rakhine	50
15.	Tanintharyi	50
16.	Kachin	26
17.	Chin	19
Total		4,563

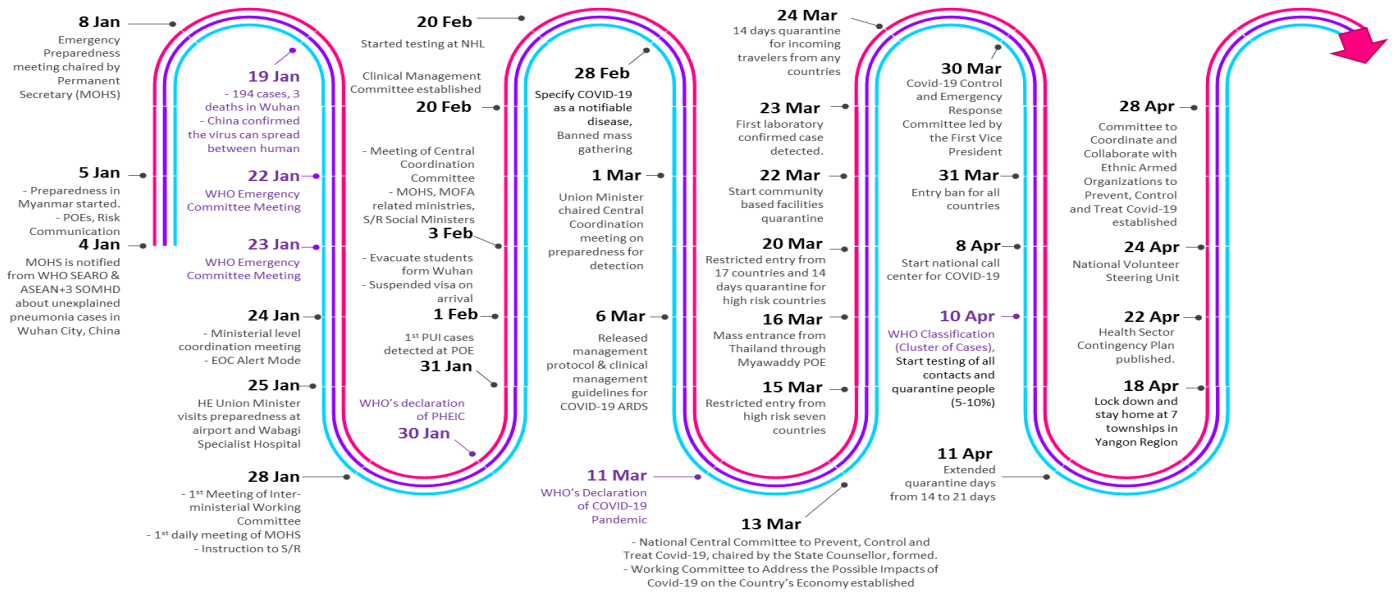
No. of Facility Quarantine sites and Quarantined people on 21.5.2020

No.	State/Region	No. of facilities	Total no. of quarantine people
1.	Magway	2,866	11,662
2.	Sagaing	2,105	9,661
3.	Mandalay	1,226	7,488
4.	Kachin	602	6,660
5.	Ayeyarwaddy	1,542	6,461
6.	Rakhine	719	4,239
7.	Bago	511	3,500
8.	Shan (N)	341	2,797
9.	Yangon	53	2,451
10.	Tanintharyi	189	1,225
11.	Shan(S)	113	1,207
12.	Naypyitaw	19	1,170
13.	Kayin	163	686
14.	Shan (E)	41	631
15.	Chin	38	392
16.	Mon	34	367
17.	Kayah	18	186
Total		10,580	60,783

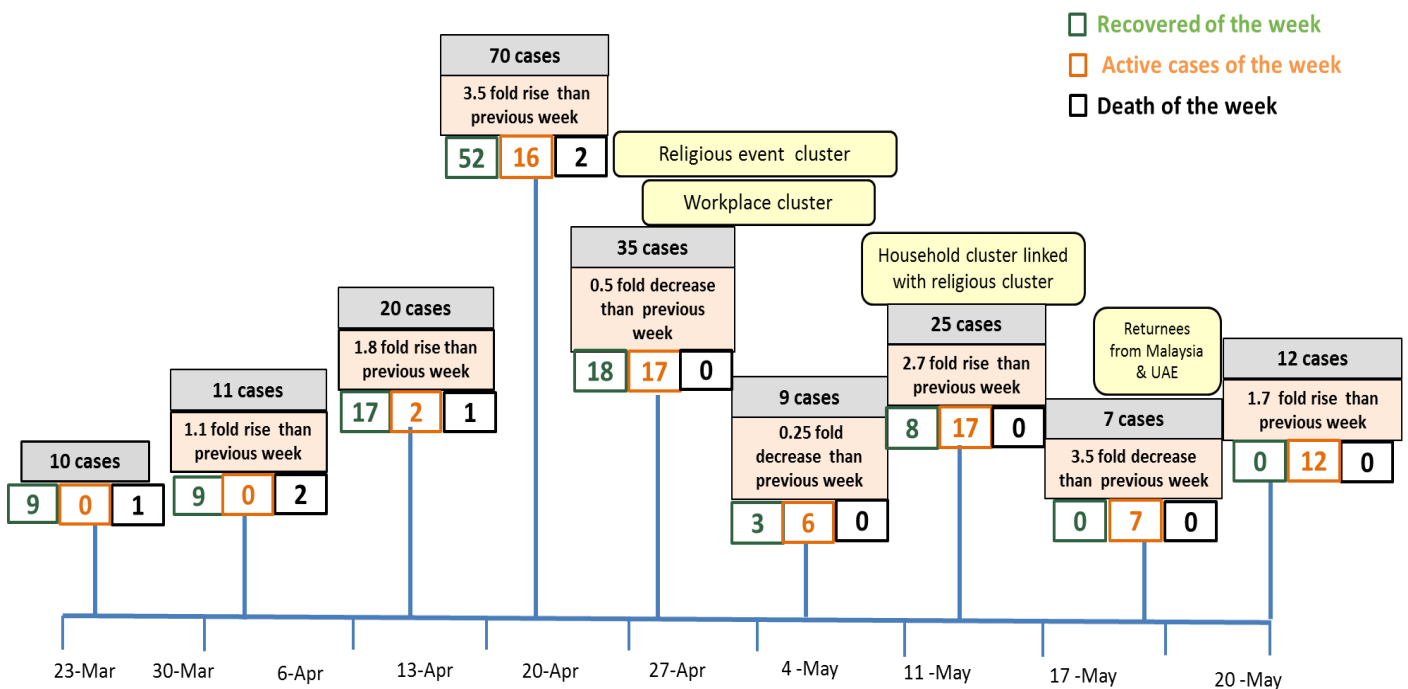
COVID-19 confirmed cases among PUI by date (as of 21.5.2020) n (PUI) = 4563, n (confirmed)= 63



Timeline of Preparedness and Response to COVID-19 in Myanmar (as of 21.5.2020)



Summary of new confirmed cases detection after first two cases (as of 21.5.2020)



- Confirmed cases were detected as peak in the 4th week after first confirmed cases due to religious event cluster.
- Confirmed cases were decreased but still raised than the first 3 weeks due to religious event cluster and workplace cluster.
- There were an increased in numbers of cases in week 7th after the first two cases due to household cluster linked with religious cluster.
- Confirmed cases were detected again in week 8 after the first two cases because of returnees.

Hotline Number— 0673420268

Data source - CEU, DMS, NHL, DMR, States and Regions Health Department