



Ministry of Health and Sports (Myanmar)

Department of Public Health

Central Epidemiology Unit

(31 July 2020)

Coronavirus Disease 2019 (COVID-19)

Situation Report - 115

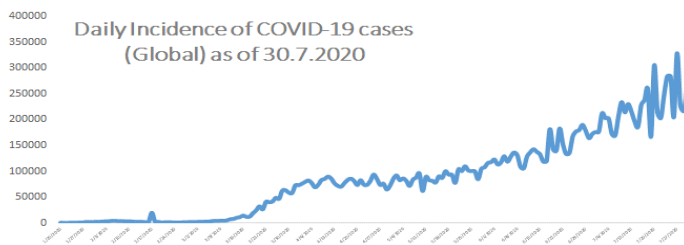
Data as reported by States and Regions by 8:00 PM MST 30 July 2020

Global Situation (WHO situation report - 192) data as of 14:30 MST 30 July 2020

Confirmed cases
16,812,763

Deaths
662,095

Case Fatality Rate
3.9 %



Myanmar Situation

Total Tested

116,520

Confirmed Cases

353

Negative

116,167

Recovered

296

83.8% of Confirmed cases

Active

51

14.4% of Confirmed cases

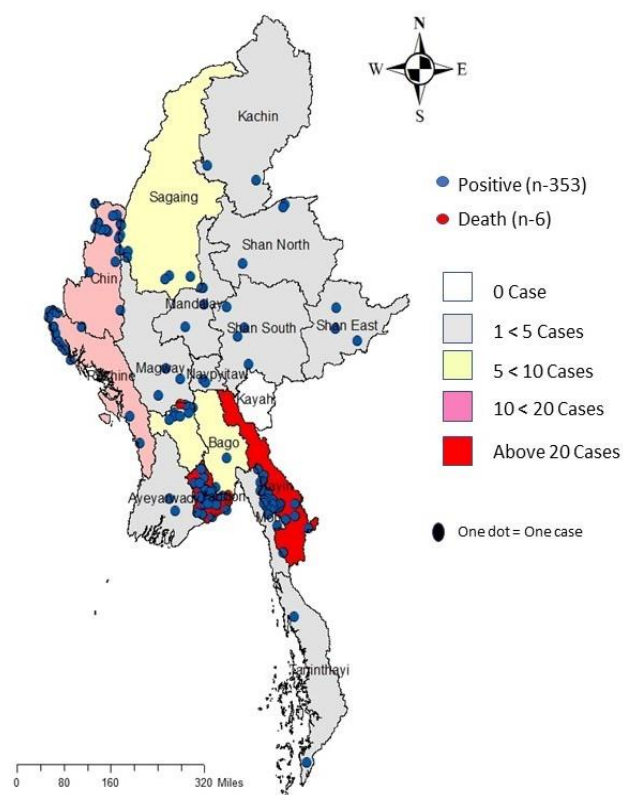
Death

6

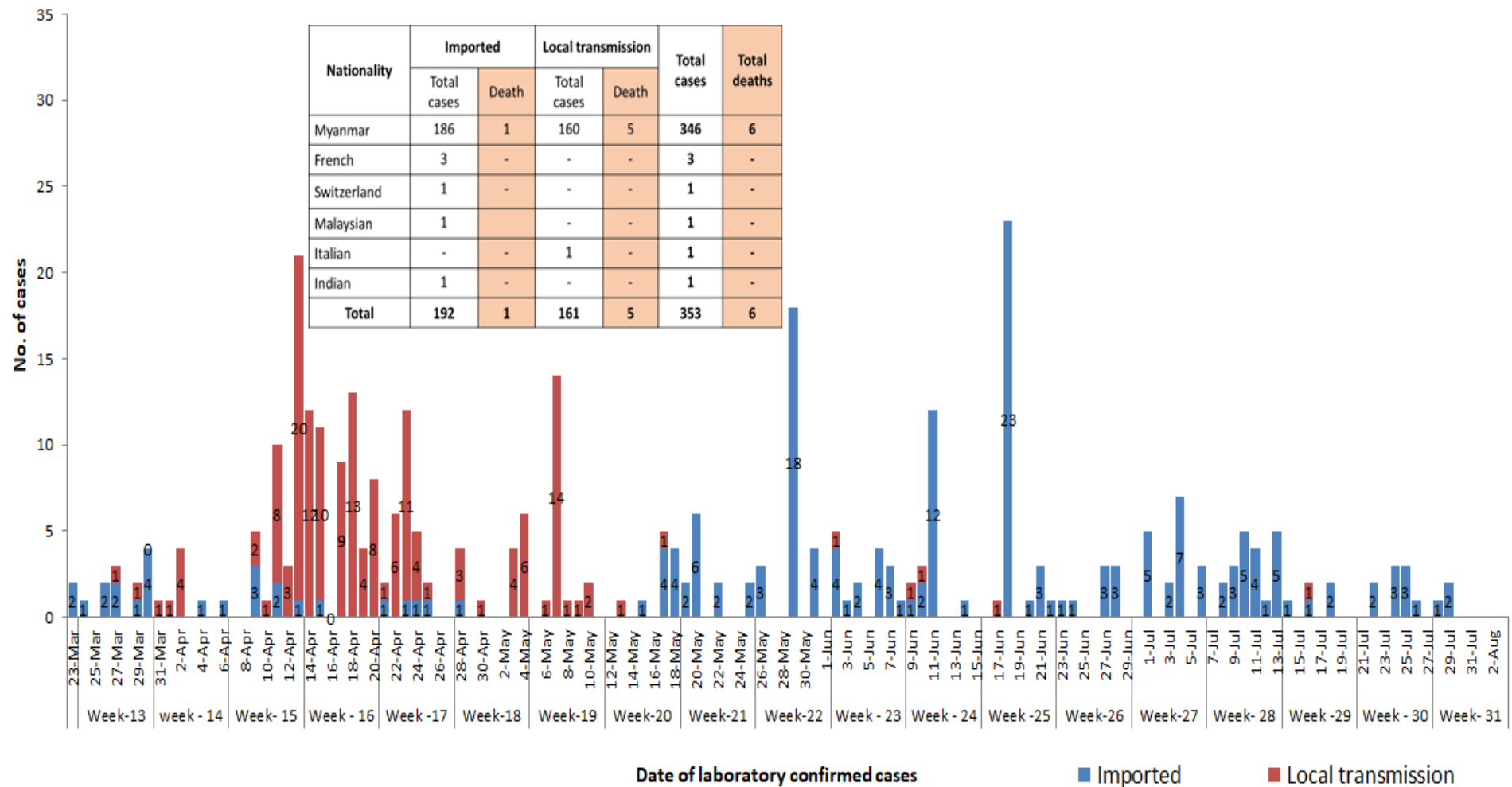
1.7% of Confirmed cases

No	State/Region	COVID –19 Confirmed case	Recovered	Deaths
1	Yangon	249	204(1 New)	5
2	Kayin	29	24	-
3	Rakhine	16	14	-
4	Chin	14	11	-
5	Sagaing	9	9	-
6	Bago	9	8	1
7	Shan (South)	4	4	-
8	Mandalay	4	4	-
9	Shan (East)	3	3	-
10	Shan (North)	3	3	-
11	Magway	3	3	-
12	Naypyitaw	2	2	-
13	Ayeyarwaddy	2	2	-
14	Kachin	2	2	-
15	Mon	2	2	-
16	Thanintharyi	2	1	-
17	Kayah	-	-	-
Total		353	296(1 New)	6

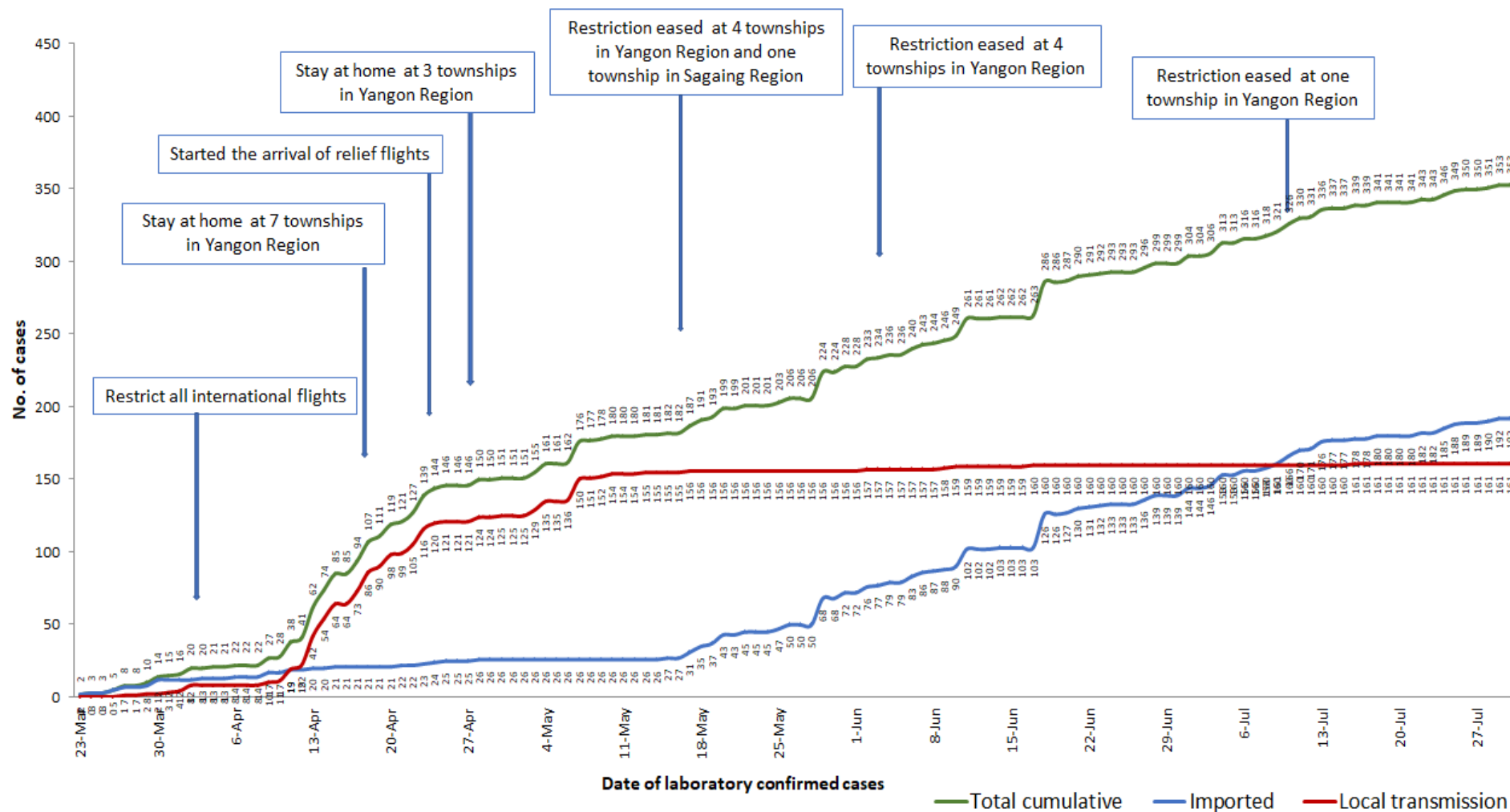
Map showing COVID-19 laboratory confirmed cases



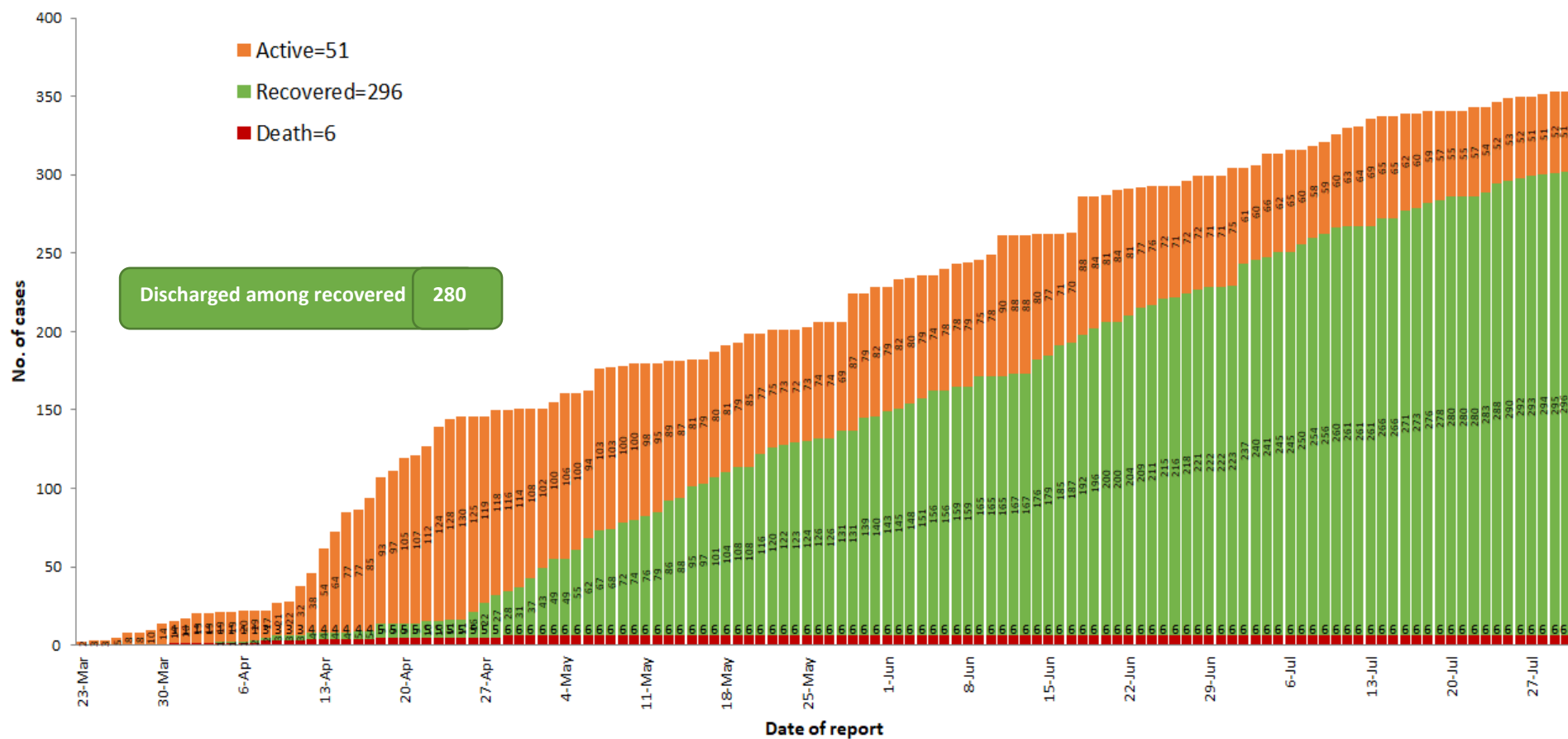
COVID-19 confirmed cases by types of transmissions (as of 30.7.2020, 8:00 pm) n=353



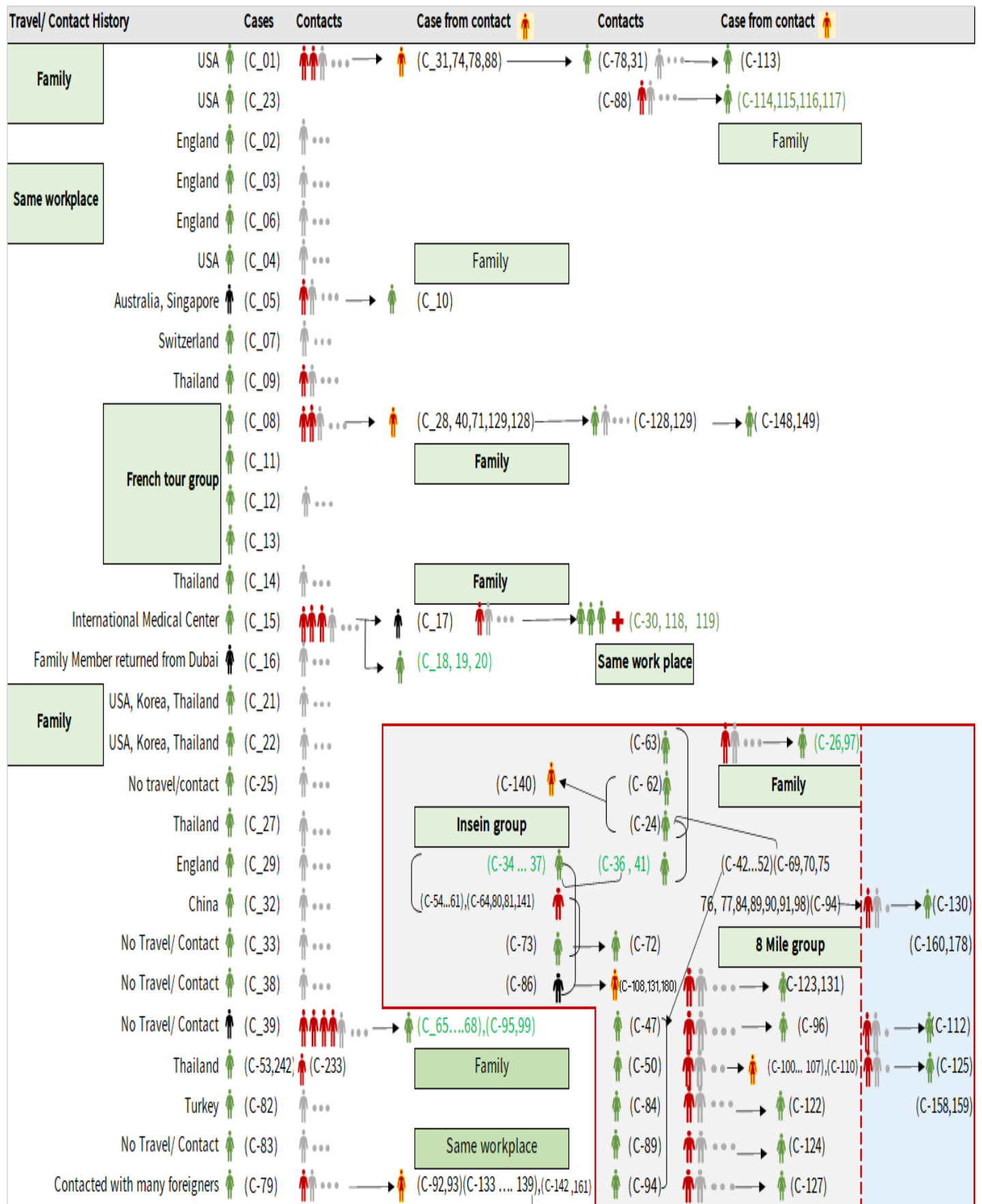
Total laboratory confirmed cases by date (as of 30.7.2020, 8:00 pm), n= 353



Cumulative Number of active confirmed cases, recovered and deaths (23.3.2020 – 30.7.2020), n (cumulative)=353



Summary of COVID-19 confirmed cases (as of 30.7.2020), n (contacts)= 5,781



Summary of COVID-19 confirmed cases (as of 30.7.2020), n (contacts)= 5,781

Travel/ Contact History	Cases	Contacts	Case from contact	Contacts	Case from contact
No Travel/ Contact	(C-85)	...			(C-110)
No travel / Contact	(C-87)	... →	(C-126)		(C-28,40,42,43,44,45,46,48,49,51,52)
No travel / Contact	(C-109)	...	(C-139) ... →	(C-146)	(C-54,55,56,57,58,60,61,63,64,69,70)
No travel / Contact	(C-111)	...	(C-133,134,142) ... →	(C-147)	(C-71,74,75,76,77,80,81,88,90,91,92,93)
No travel/Contact	(C-120)	...			(C-98,100,101,102,103,104,105,106,107,108)
England	(C-327)	(C-121,302,303,317)			(C-133,134,135,136,137,138,139,140,141,142)
No travel/Contact	(C-132)	...			(C-151,152,153,154,157,158,159,160,161)
Dubai/Thailand	(C-143)	...			(C-164,165,167,168,170,171,172,174)
No travel/Contact	(C-144)	...			(C-178,184,189,191,193,205,207,216,217,218)
India	(C-145,204,209,210,212,213,215,220,221,223,224,229,225,227,228,252,255,259,296,299,305,306,317)				(C-226,233,234,235,237,246,253,258)
China	(C-150,230)			Household	
Contact with religious event cluster	(C-162)	... →	(C-151,152,153,154,157) →	(C-165 177)	(C-166,169,173,175,176,177)
No travel/contact	(C-155)	... →	(C-163,164) (163)	(C-177) ... →	(C-179) ... → (C-181)
No travel/contact	(C-156)	...			
No travel/contact	(C-183)	...			
Malaysia	(C-184,189,273,280,351,353)	(C-182,185,186,191,188,190,187,200,201,232,275,282)			
UAE	(C-300,301,315,316,337)	(C-193,192,194,195,196,197,198,199,301,314,340)			
Italy	(C-243,202)				
No travel/Contact	(C-231)				
Bangladesh	(C-234,244,247,250,262,309,310,326,334,348)	(C-244,245,247,248,250,262,291,292,293,308,325)			
No travel/contact	(C-245)	...			
No travel/contact	(C-249)				
No travel/contact	(C-263)	...			
Thailand	(C-269,279,332,333,335,346,349,352)	(C-264,265,266,267,268,270,271,272,273,274,276,277,278,280,281,283,284,285,286,287,294,304,312,336,338)			
Quata	(C-288)	(C-289,290)			
India	(C-203,205.....214,216...219,221.... 229,....240,241,246,251,253,254...258,260,261,295,297,298,307,322,323,324,344,345)	(C-328,329,330)			
Lao	(C-311)	...			
Singapore	(C-313)	...			
Philippines	(C-319,321,342,343)	(C-320)			
USA	(C-331,347,350)	...			
No travel/contact	(C-339)	...			

Summary of current situation		
Type	New (29.7.2020-30.7.2020)	Total (on 30.7.2020)
Suspected and Person Under Investigation (PUI)	20	140
Hospital Quarantine	3	39
Facility Quarantine	661	19,432

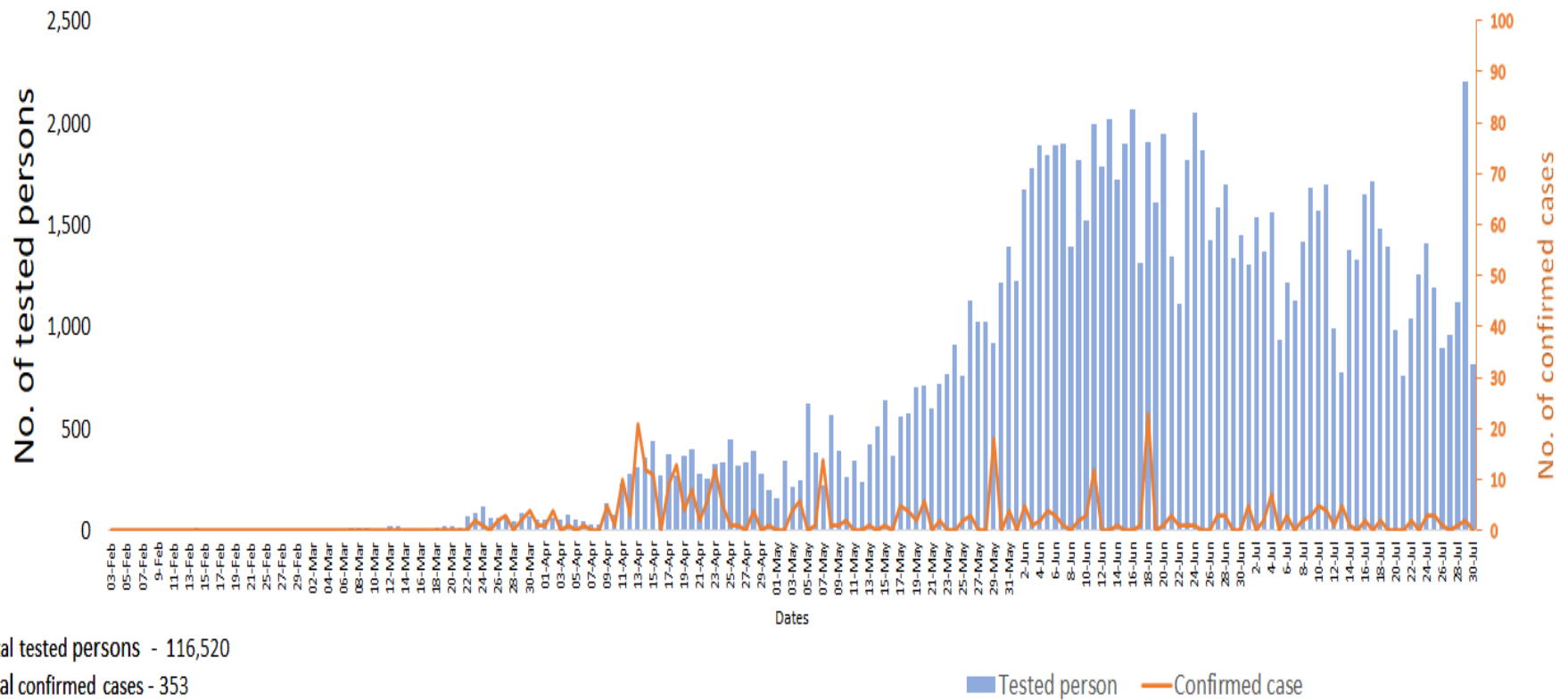
Person under Investigation (PUI) by State/Region hospitals (31.1.2020 – 30.7.2020) n= 6,787

No.	State/Region	PUI
1	Yangon	3405
2	Mandalay	1393
3	Kayin	297
4	Mon	280
5	Shan (N)	236
6	Magway	214
7	Bago	180
8	Shan (E)	125
9	Shan (S)	104
10	Ayeyarwaddy	102
11	Sagaing	90
12	Kayah	81
13	Thanintharyi	75
14	Rakhine	69
15	Naypyitaw	64
16	Kachin	42
17	Chin	30
Total		6,787

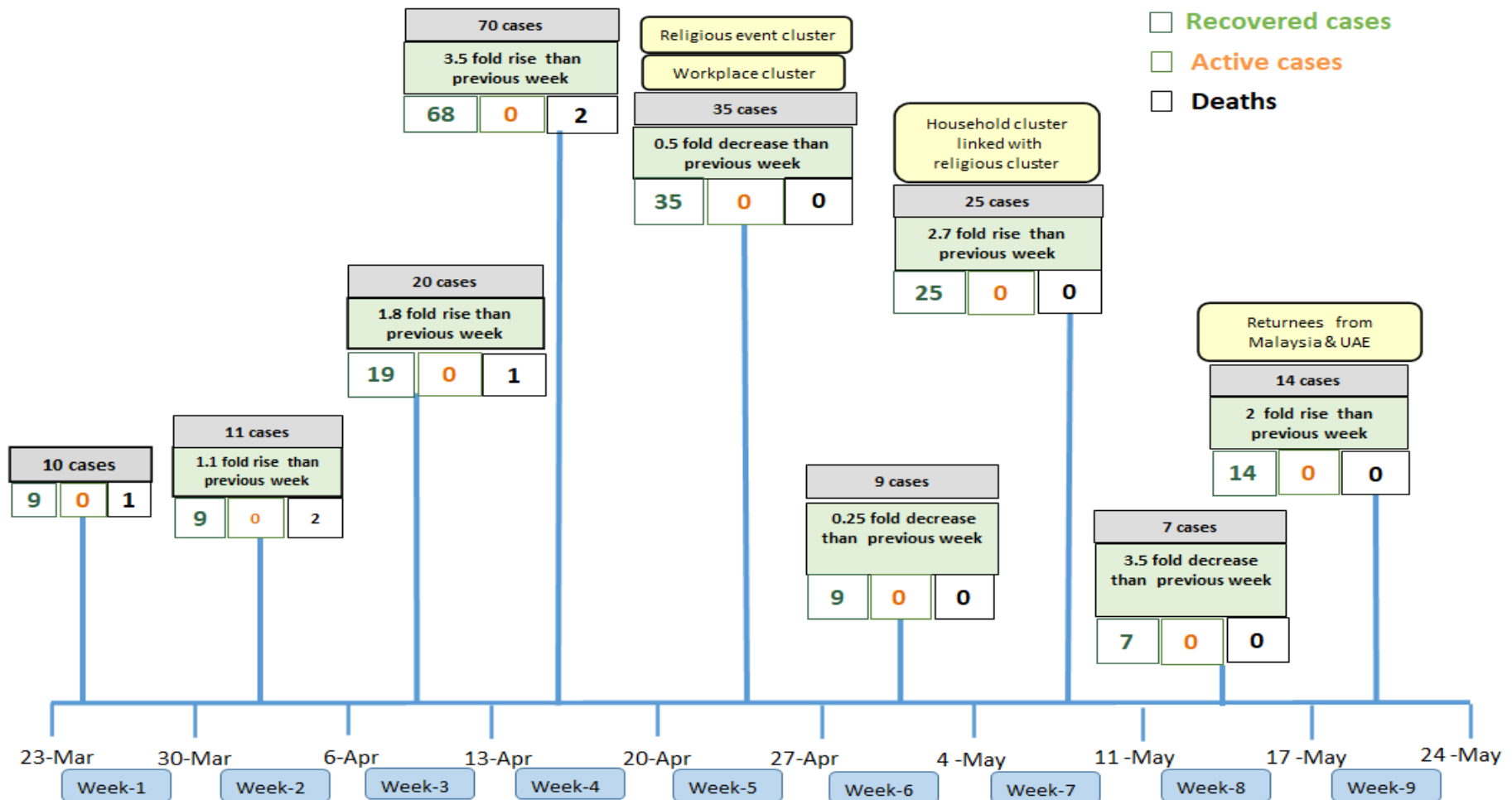
No. of Facility Quarantine sites and Quarantined people on 30.7.2020

No.	State/Region	No. of facilities	Total no. of quarantine
1	Yangon	55	3,253
2	Mon	261	2,626
3	Bago	241	2,512
4	Kayin	365	2,326
5	Tanintharyi	189	1,708
6	Magway	304	1,638
7	Sagaing	174	996
8	Mandalay	64	922
9	Rakhine	253	792
10	Shan South	92	664
11	Ayeyarwaddy	169	656
12	Kachin	426	614
13	Naypyitaw	1	296
14	Shan North	269	201
15	Kayah	18	89
16	Chin	16	83
17	Shan East	9	56
Total		2,906	19,432

COVID-19 confirmed cases among tested by date (as of 30.7.2020)

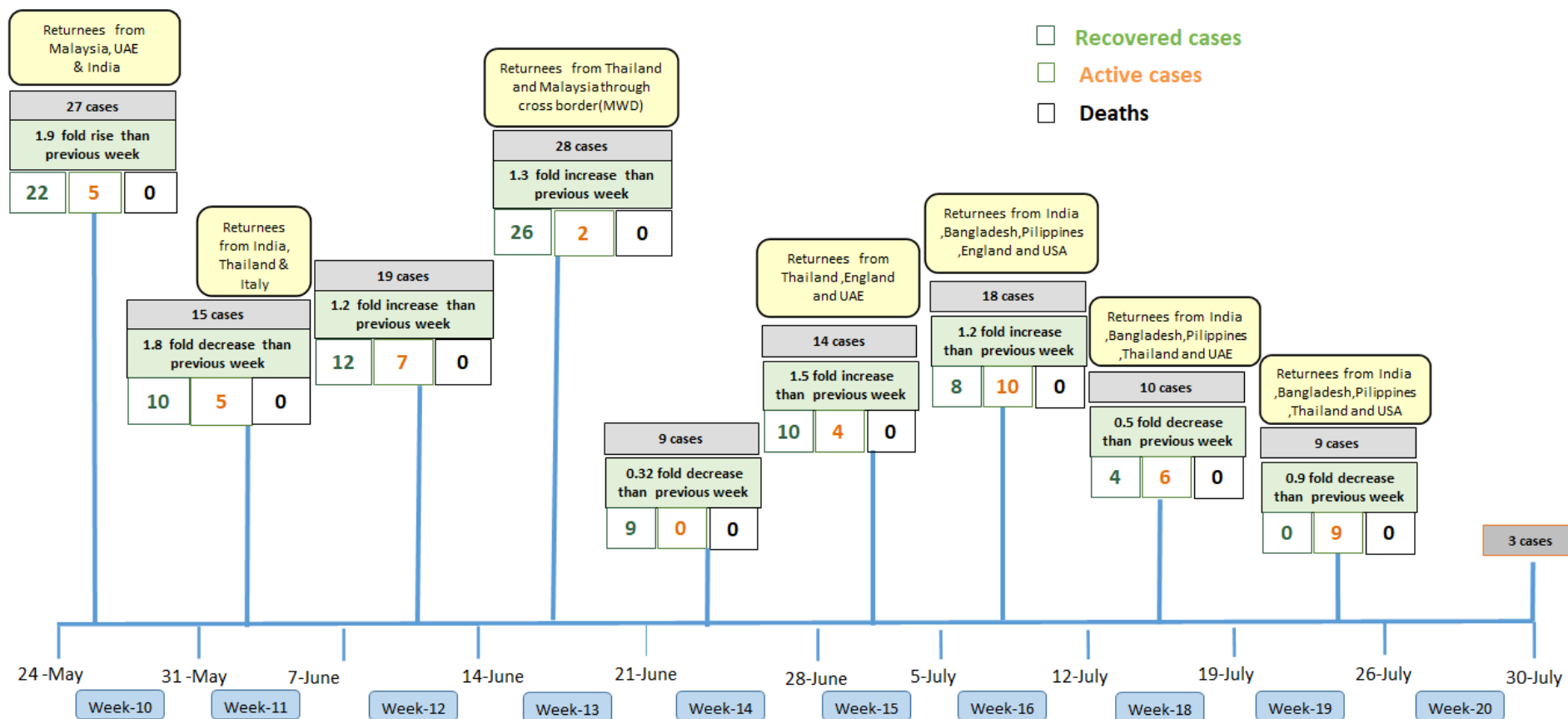


Summary of new confirmed cases detection after first two cases (as of 30.7.2020)



- Confirmed cases were detected as a peak in the 4th week after first confirmed cases due to the religious event cluster.
- Confirmed cases were decreased but still raised than the first 3 weeks due to the religious event cluster and workplace cluster.
- There were an increased in numbers of cases in the 7th week after the first two cases due to the household cluster linked with a religious cluster.
- Confirmed cases were detected by a nearly two-fold rise in the 9th and 10th weeks after the first two cases because of returnees coming back by relief flights.

Summary of new confirmed cases detection after first two cases (as of 30.7.2020)



- Confirmed cases were detected as a peak in the 4th week after first confirmed cases due to the religious event cluster.
- Confirmed cases were decreased but still raised than the first 3 weeks due to the religious event cluster and workplace cluster.
- There were an increased in numbers of cases in the 7th week after the first two cases due to the household cluster linked with a religious cluster.
- Confirmed cases were detected by a nearly two-fold rise in the 9th and 10th weeks after the first two cases because of returnees coming back by relief flights.

Timeline of Preparedness and Response to COVID-19 in Myanmar (as of 30.7.2020)

