



Ministry of Health and Sports (Myanmar)

Department of Public Health

Central Epidemiology Unit

(25 August 2020)

Coronavirus Disease 2019 (COVID-19)

Situation Report - 140

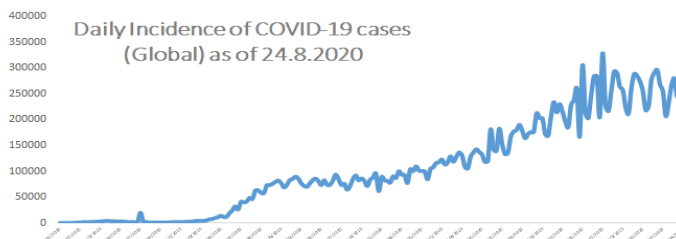
Data as reported by States and Regions by 00:30 AM MST 25 August 2020

WHO Coronavirus Disease (COVID-19) Dashboard data as of 2:22 PM CEST 24 August 2020

Confirmed cases
23,311,719

Deaths
806,410

Case Fatality Rate
3.5 %



Myanmar Situation

Total Tested

147,820

Confirmed Cases

474

Negative

147,346

Recovered

341

71.9% of Confirmed cases

Active

127

26.8% of Confirmed cases

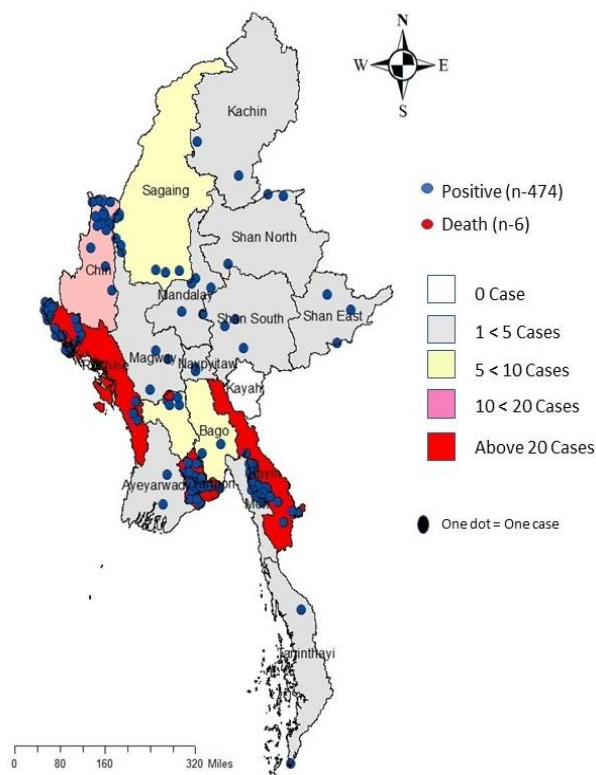
Death

6

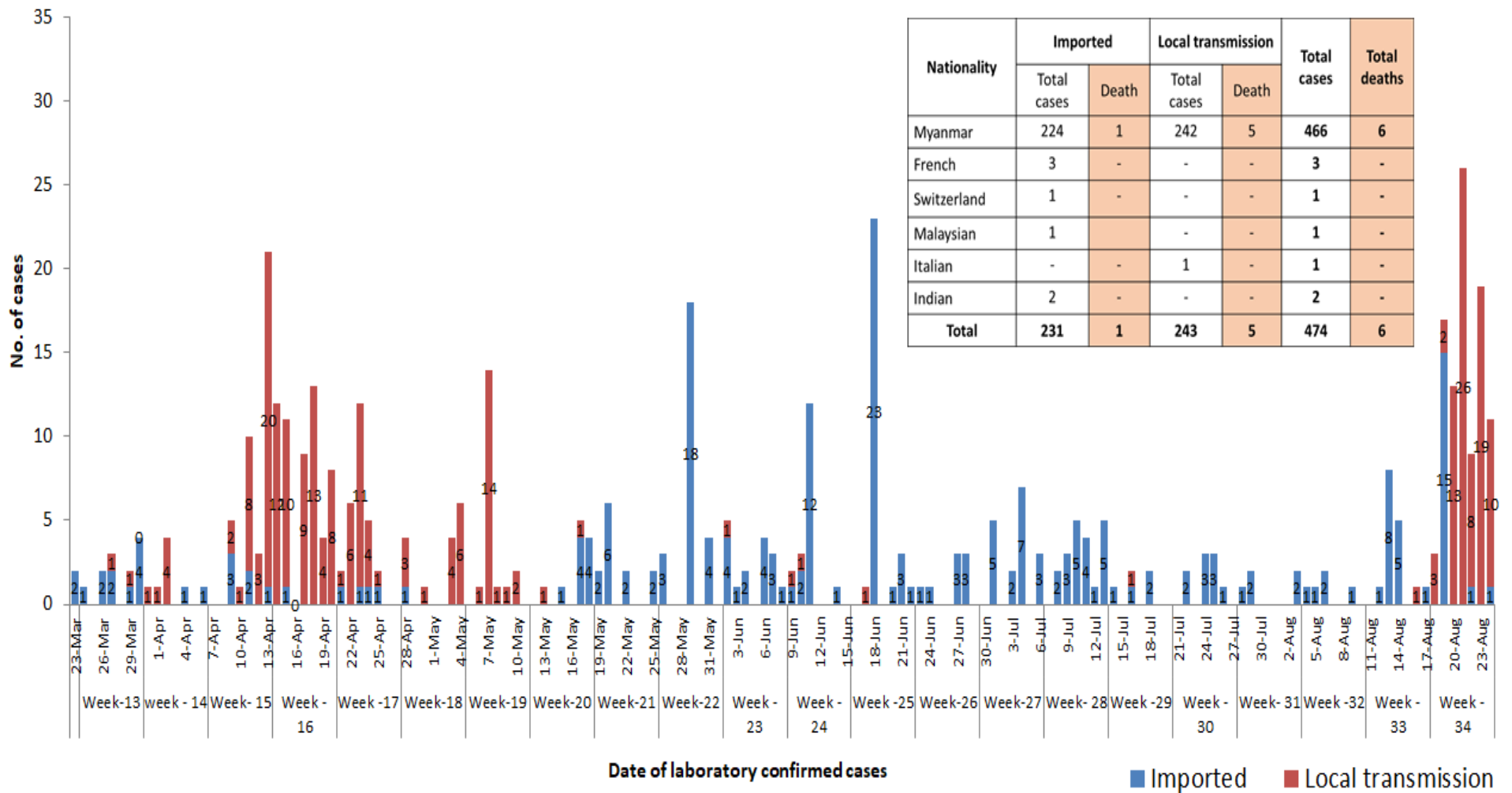
1.3% of Confirmed cases

No	State/Region	COVID -19 Confirmed case	Recovered	Deaths
1	Yangon	286(3 New)	239	5
2	Rakhine	96(8 New)	16	-
3	Kayin	29	29	-
4	Chin	18	3	-
5	Sagaing	9	9	-
6	Bago	9	8	1
7	Shan (South)	4	4	-
8	Mandalay	4	4	-
9	Shan (East)	3	3	-
10	Shan (North)	3	3	-
11	Magway	3	3	-
12	Naypyitaw	2	2	-
13	Ayeyarwaddy	2	2	-
14	Kachin	2	2	-
15	Mon	2	2	-
16	Thanintharyi	2	2	-
17	Kayah	-	-	-
Total		474(11 New)	341	6

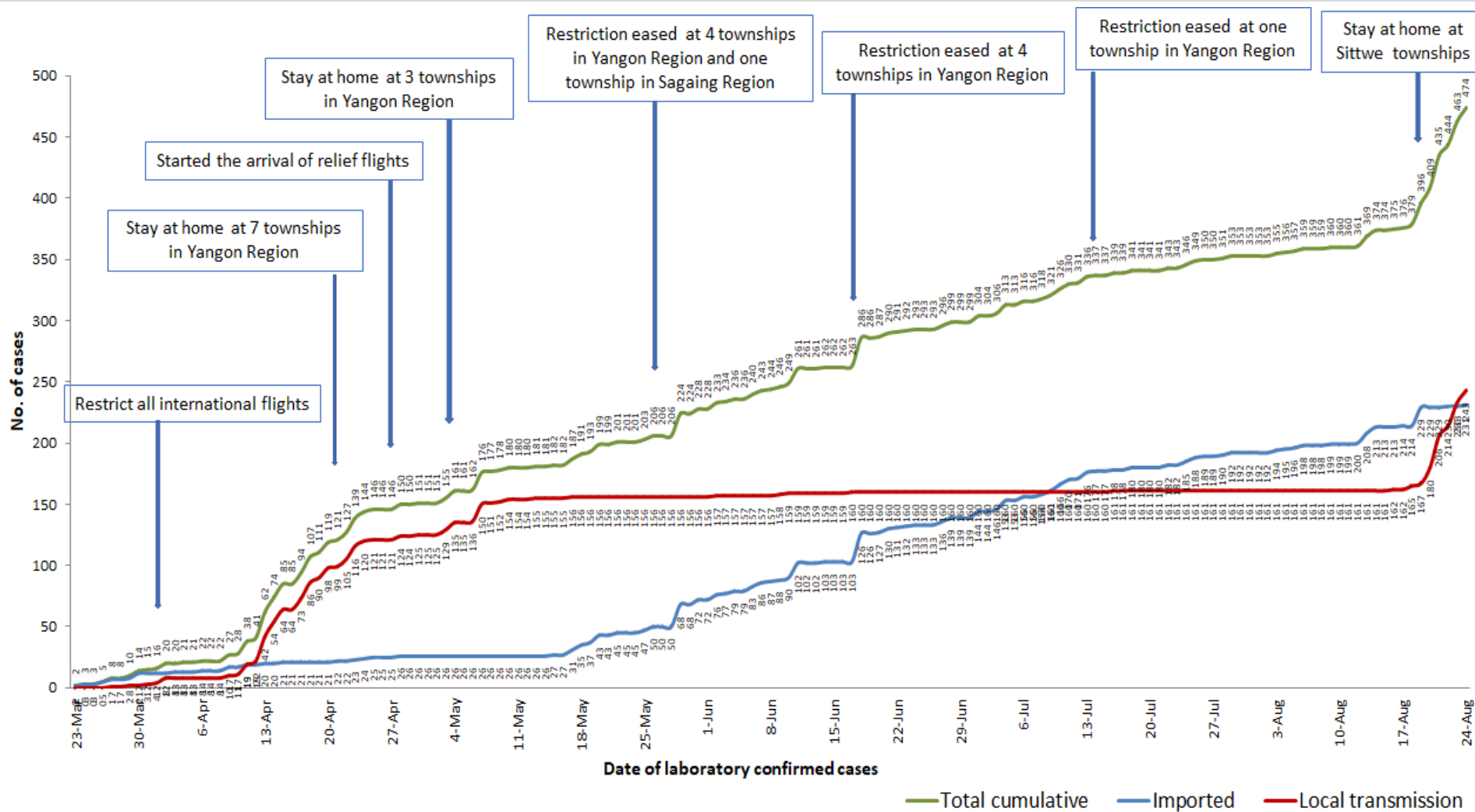
Map showing COVID-19 laboratory confirmed cases



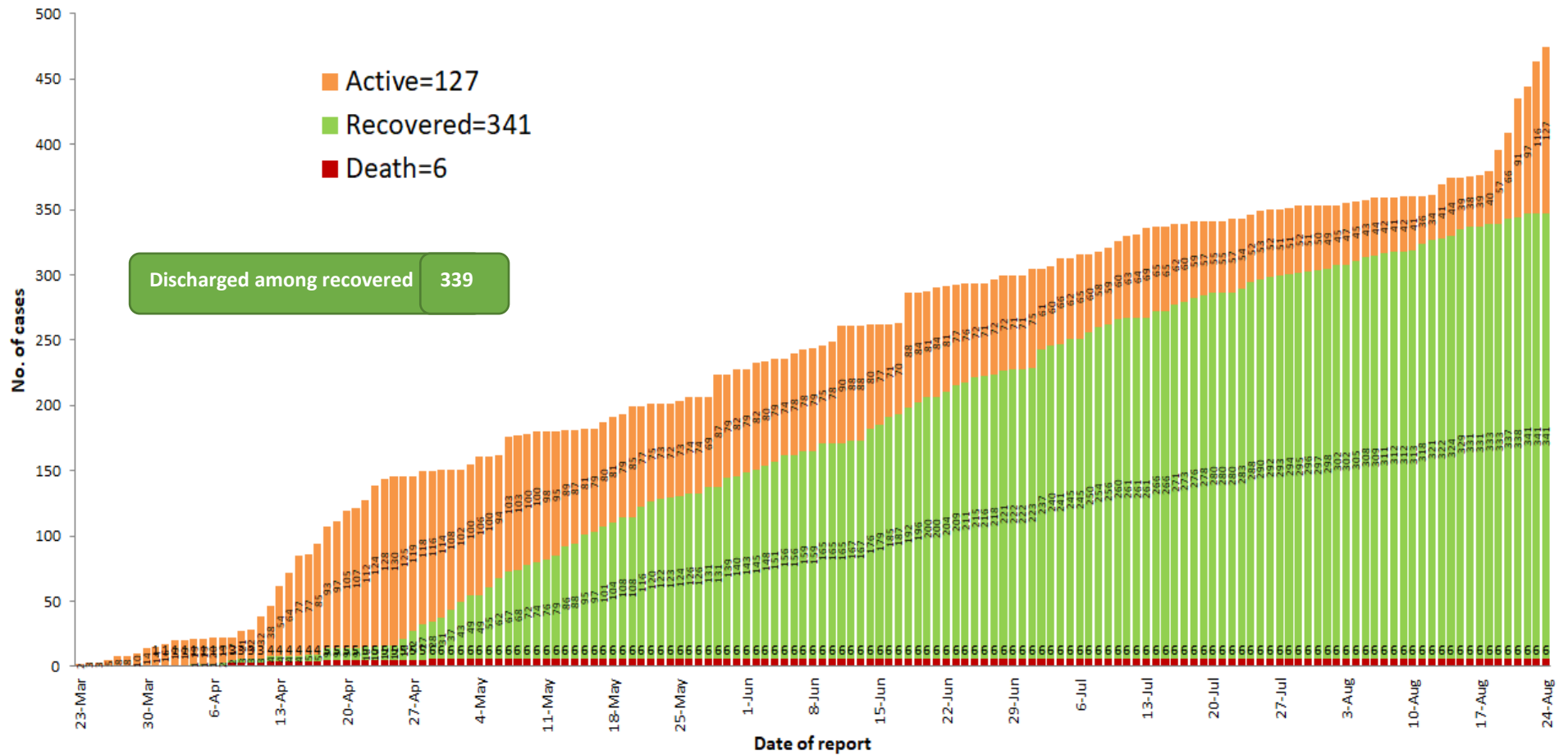
COVID-19 confirmed cases by types of transmissions (as of 25.8.2020, 00:30 am) n=474



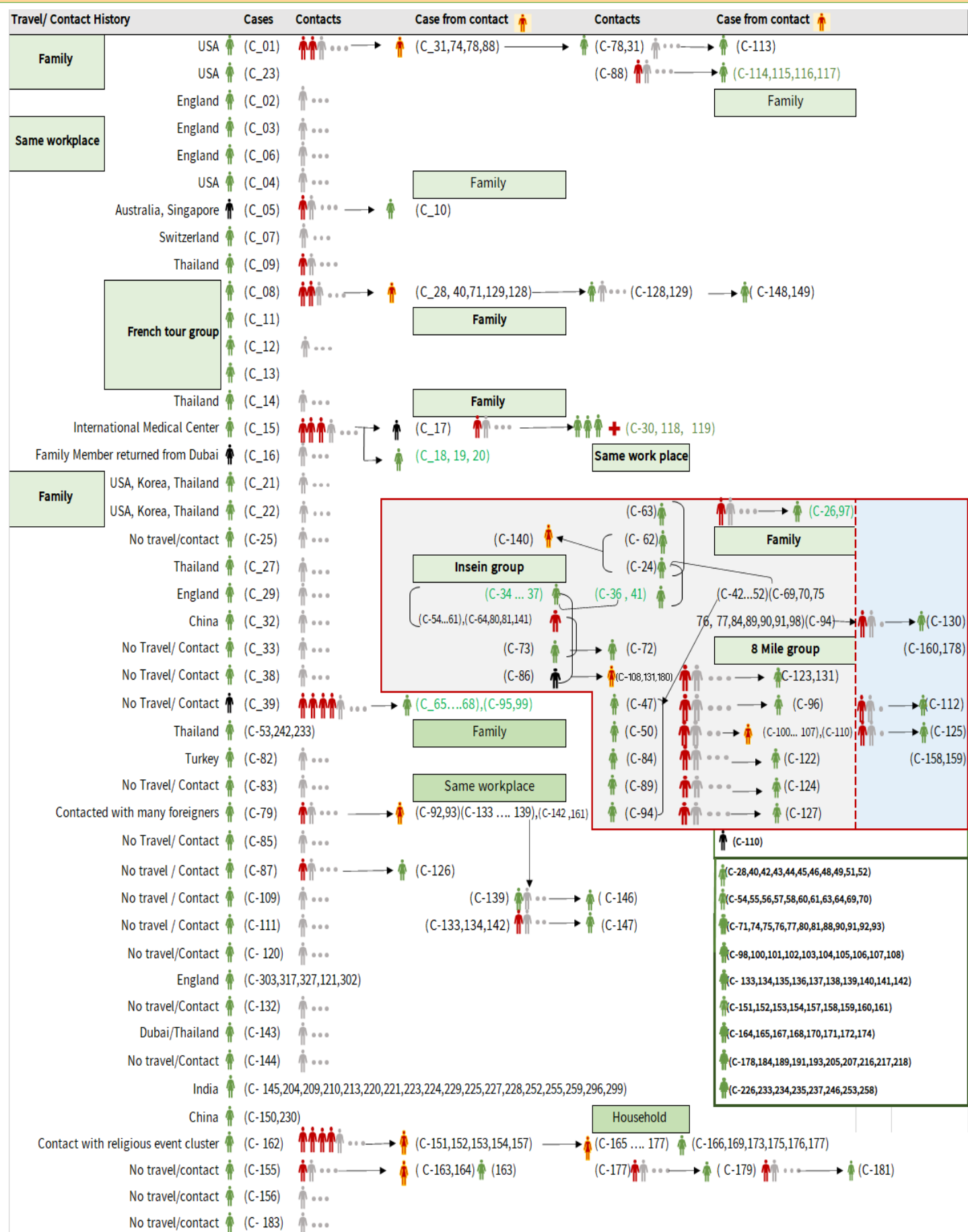
Total laboratory confirmed cases by date (as of 25.8.2020, 00:30 am), n= 474



Cumulative Number of active confirmed cases, recovered and deaths (23.3.2020 – 24.8.2020), n (cumulative)=474



Summary of COVID-19 confirmed cases (as of 24.8.2020), n (contacts)= 6,322



Summary of COVID-19 confirmed cases (as of 24.8.2020), n (contacts)= 6,322

Travel/ Contact History	Cases	Contacts	Case from contact	Contacts	Case from contact
Malaysia	(C-280)	(C-182,185,186,191,184,188,189,190,187,200,201,232,273,275,280,282,351,353)			
UAE	(C-301,364,365,366,367,368,369,371)	(C-193,192,194,195,196,197,198,199,300,301,314,315,316,337,340)			
Italy	(C-243,202)				
No travel/Contact	(C-231)				
Bangladesh	(C-234)	(C-244,245,247,248,250,262,291,292,293,308,309,310,325,326,334,348)			
No travel/contact	(C-245)	...			
No travel/contact	(C-249)				
No travel/contact	(C-263)	...			
Thailand	(C-333)	(C-264,265,266,267,268,269,270,271,272,273,274,276,277,278,279,280,281,283,284,285,286,287,294,304,312,332,335,336,338,346,349,352)			
Quata	(C-288,289,290,354,355)				
India	(C-205.....214,216...218,222... 229,....239,246,253,254,255,258,295,297,298,307,322,323,345,357,358,359,361,372,373,374,380.....393,442)				
Lao	(C-311)	...			
Singapore	(C-376,466)	(C-313)			
Philippines	(C-319,394)	(C-320,321,342,343)			
USA	(C-347,370)	(C-331,350,360)			
No travel/contact	(C-339)	...			
Sudan	(C-356)				
India	(C-203,219,240,241,251,254,256,257,260,328,329,330,261,299,305,324,341,344)				
Japan	(C-362,363)				
No travel/Contact	(C-375)		1' contact (C-395)	2' contact (C-398,417) → (C-446) work place cluster	
No travel/Contact	(C-377)	(C-410,428,429)	2' contact (C-378,405,408,409) (C-379) family cluster (C-400,401,402,403,404) (C-406,407) family cluster	(C-415) (C-418,419) family (C-420,421,431)	
No travel/Contact	(C-378)	(C-430) → (C-459)			
No travel/Contact	(C-379)	(C-432,433,434,435) (C-472)			
No travel/Contact	(C-396)	(C-422,423,424,425,426,427)			
No travel/Contact	(C-397)	(C-451,452,453)			
No travel/Contact	(C-399)	(C-460,461,462,463)			
No travel/Contact	(C-408)	(C-440,441)			
No travel/Contact	(C-411)				
No travel/Contact	(C-412)				
No travel/Contact	(C-413)	(C-470,471)			
No travel/Contact	(C-414)				
No travel/Contact	(C-416)				
No travel/Contact	(C-436)				
No travel/Contact	(C-437)				
No travel/Contact	(C-438)				
No travel/Contact	(C-439)				
No travel/Contact	(C-443)				
No travel/Contact	(C-444)				
No travel/Contact	(C-447)	(C-474)			
No travel/Contact	(C-448)				
No travel/Contact	(C-449)				
No travel/Contact	(C-450)				
No travel/Contact	(C-464)				
No travel/Contact	(C-465)				
No travel/Contact	(C-467)				
No travel/Contact	(C-468)				
No travel/Contact	(C-469)				
No travel/Contact	(C-473)				

Summary of current situation		
Type	New (23.8.2020-24.8.2020)	Total (on 24.8.2020)
Suspected and Person Under Investigation (PUI)	31	187
Hospital Quarantine	7	37
Facility Quarantine	1,311	20,406

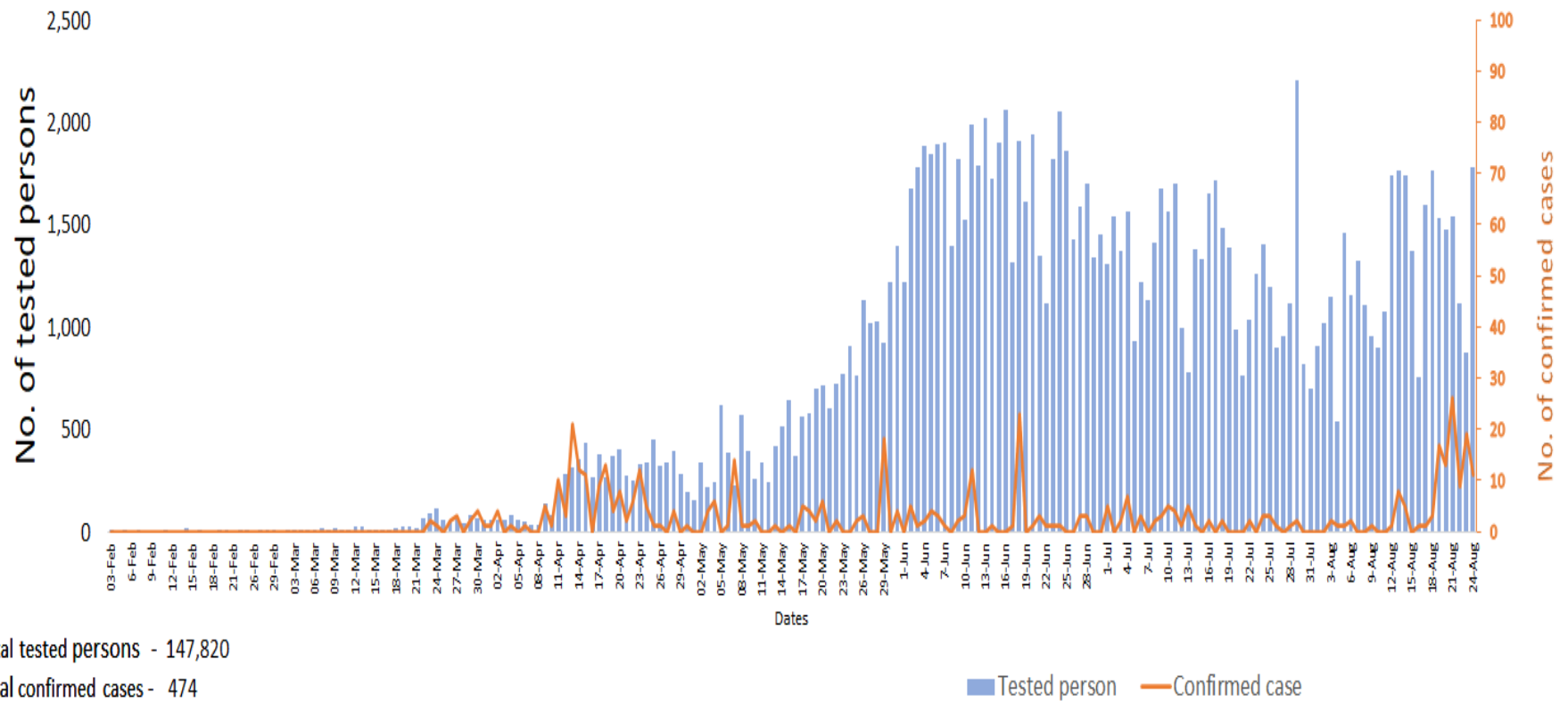
Person under Investigation (PUI) by State/Region hospitals (31.1.2020 – 24.8.2020) n= 7,311

No.	State/Region	PUI
1	Yangon	3640
2	Mandalay	1515
3	Kayin	356
4	Mon	297
5	Shan (N)	259
6	Magway	233
7	Bago	183
8	Shan (E)	130
9	Shan (S)	106
10	Ayeyarwaddy	104
11	Rakhine	95
12	Sagaing	91
13	Thanintharyi	82
14	Kayah	81
15	Naypyitaw	65
16	Kachin	43
17	Chin	31
Total		7,311

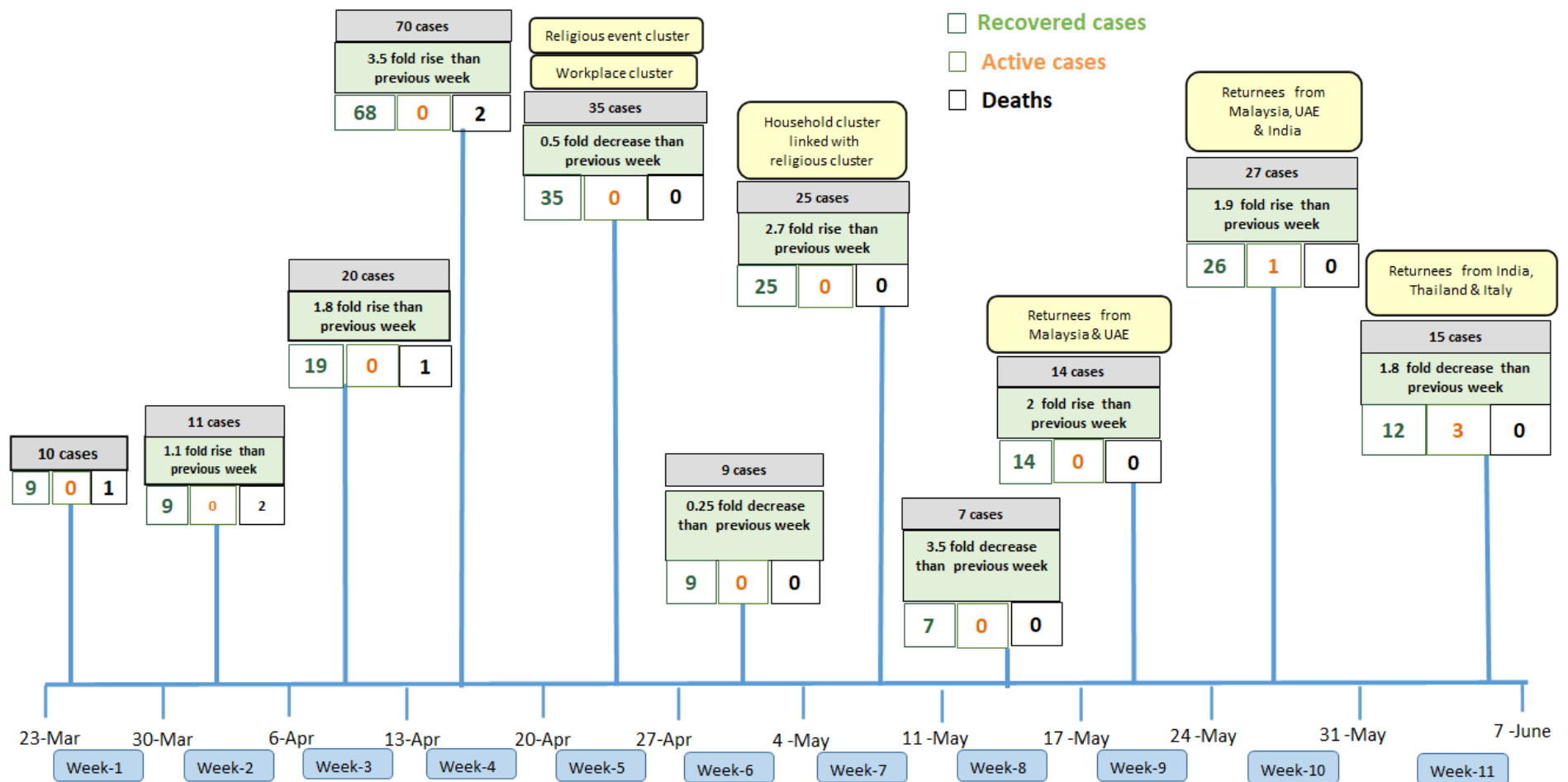
No. of Facility Quarantine sites and Quarantined people on 24.8.2020

No.	State/Region	No. of facilities	Total no. of quarantine
1	Yangon	69	4777
2	Mon	277	2787
3	Bago	185	2370
4	Kayin	459	2275
5	Tanintharyi	189	1898
6	Magway	407	1216
7	Mandalay	71	1027
8	Rakhine	258	985
9	Sagaing	168	843
10	Ayeyarwaddy	77	588
11	Kachin	89	520
12	Shan South	80	472
13	Naypyitaw	2	309
14	Chin	21	108
15	Shan North	268	91
16	Kayah	18	89
17	Shan East	7	51
Total		2,645	20,406

COVID-19 confirmed cases among tested by date (as of 24.8.2020)

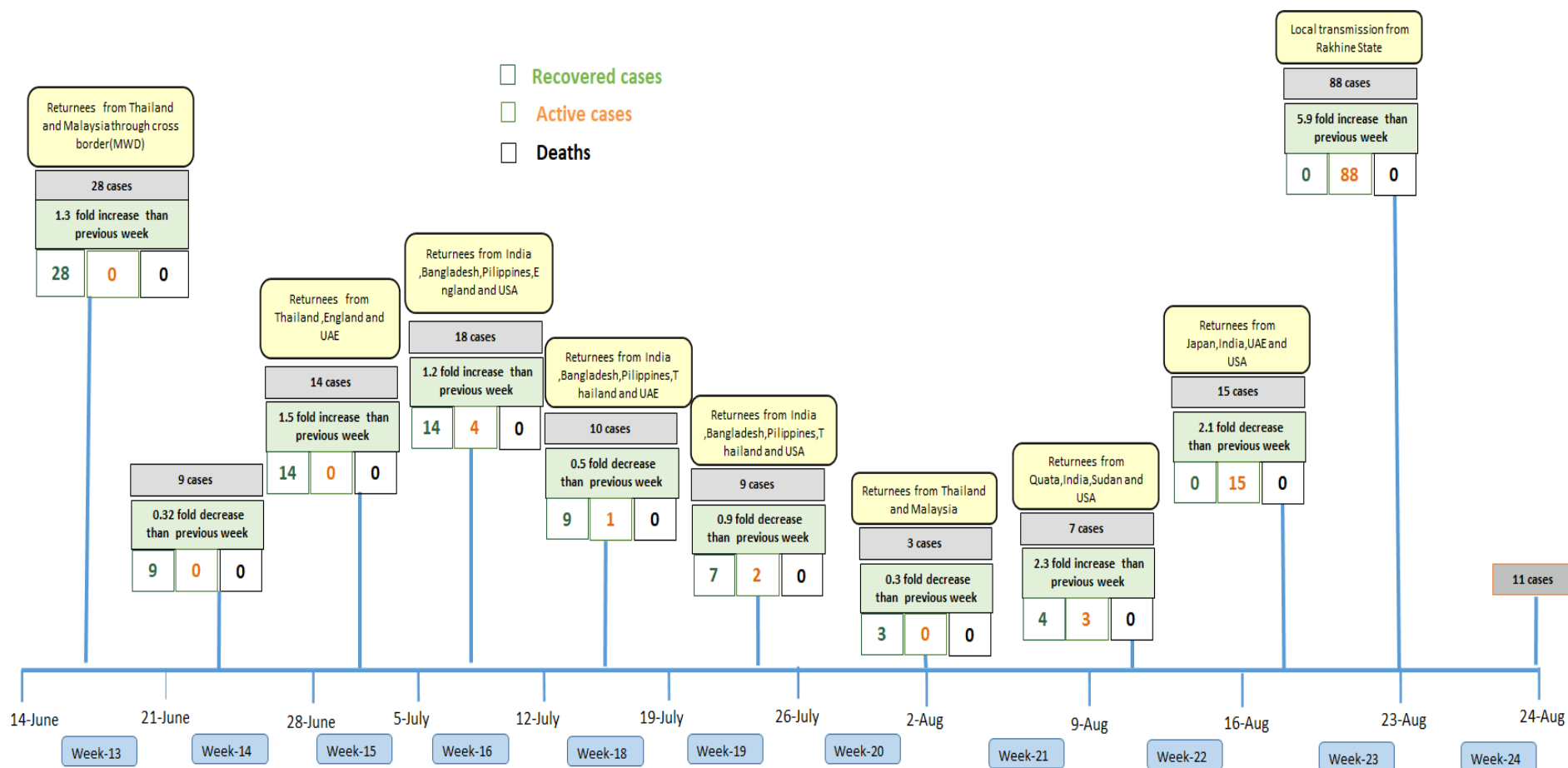


Summary of new confirmed cases detection after first two cases (as of 24.8.2020)



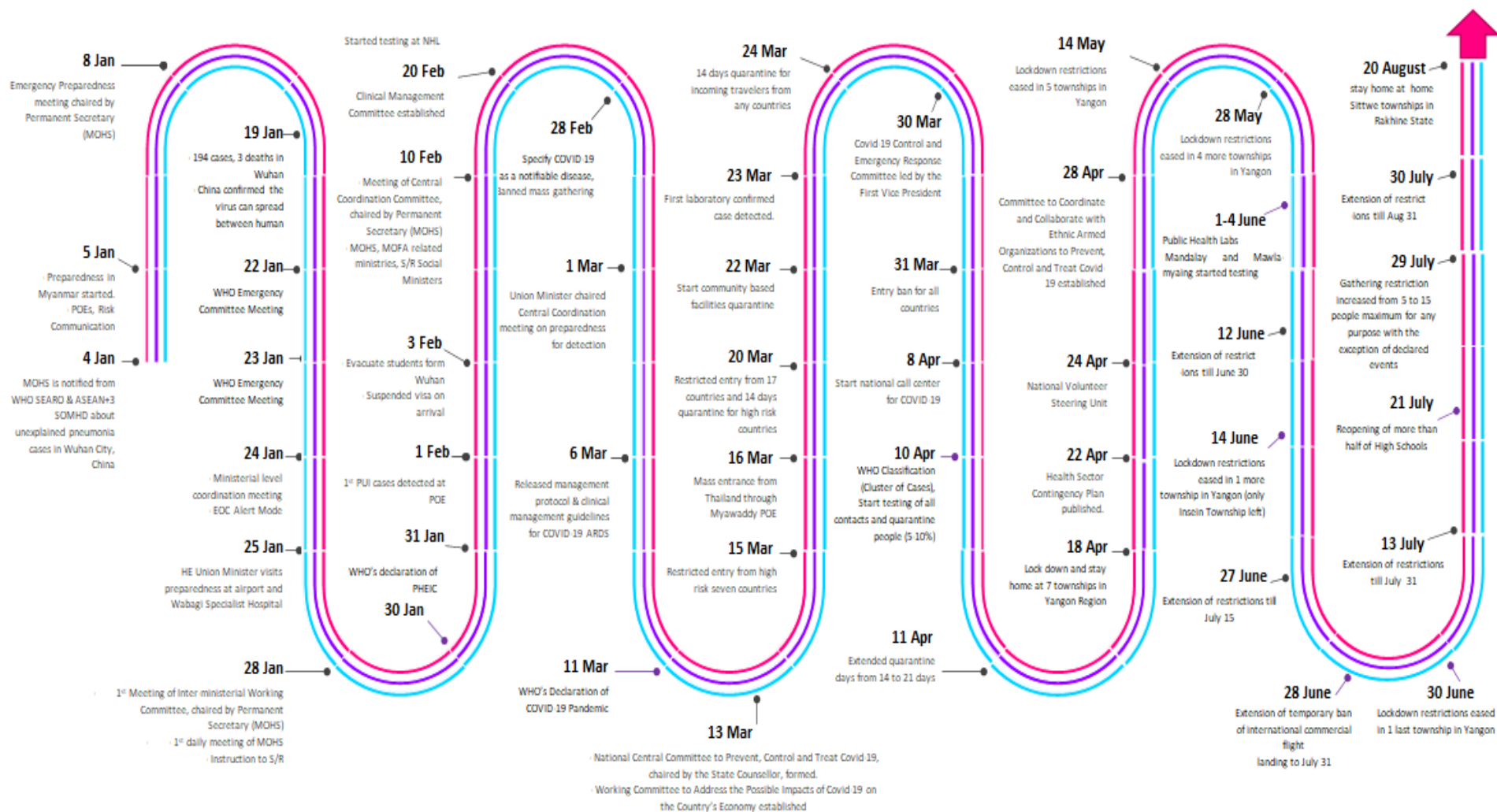
- Confirmed cases were detected as a peak in the 4th week after first confirmed cases due to the religious event cluster.
- Confirmed cases were decreased but still raised than the first 3 weeks due to the religious event cluster and workplace cluster.
- There were an increased in numbers of cases in the 7th week after the first two cases due to the household cluster linked with a religious cluster.
- Confirmed cases were detected by a nearly two-fold rise in the 9th and 10th weeks after the first two cases because of returnees coming back by relief flights.

Summary of new confirmed cases detection after first two cases (as of 24.8.2020)



- Confirmed cases were detected as a peak in the 4th week after first confirmed cases due to the religious event cluster.
- Confirmed cases were decreased but still raised than the first 3 weeks due to the religious event cluster and workplace cluster.
- There were an increased in numbers of cases in the 7th week after the first two cases due to the household cluster linked with a religious cluster.
- Confirmed cases were detected by a nearly two-fold rise in the 9th and 10th weeks after the first two cases because of returnees coming back by relief flights.

Timeline of Preparedness and Response to COVID-19 in Myanmar (as of 24.8.2020)



Hotline Number— 0673 420 268

Data source - CEU, DMS, NHL, PHL (MDY and MLM), DMR, DSGH, State and Region Health Departments