



Ministry of Health and Sports (Myanmar)

Department of Public Health

Central Epidemiology Unit

(26 April 2020)

Coronavirus Disease 2019 (COVID-19)

Situation Report - 20

Data as reported by States and Regions by 24:00 MST 25 April 2020

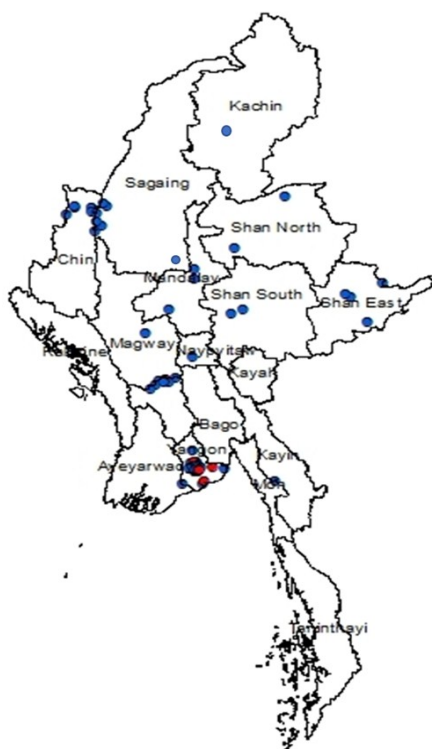
Global Situation

(according to WHO situation report - 96, data as of 14:30 MST 25 April 2020)

Confirmed cases	Deaths
2,719,897	187,705

Myanmar

Map showing COVID-19 laboratory confirmed cases

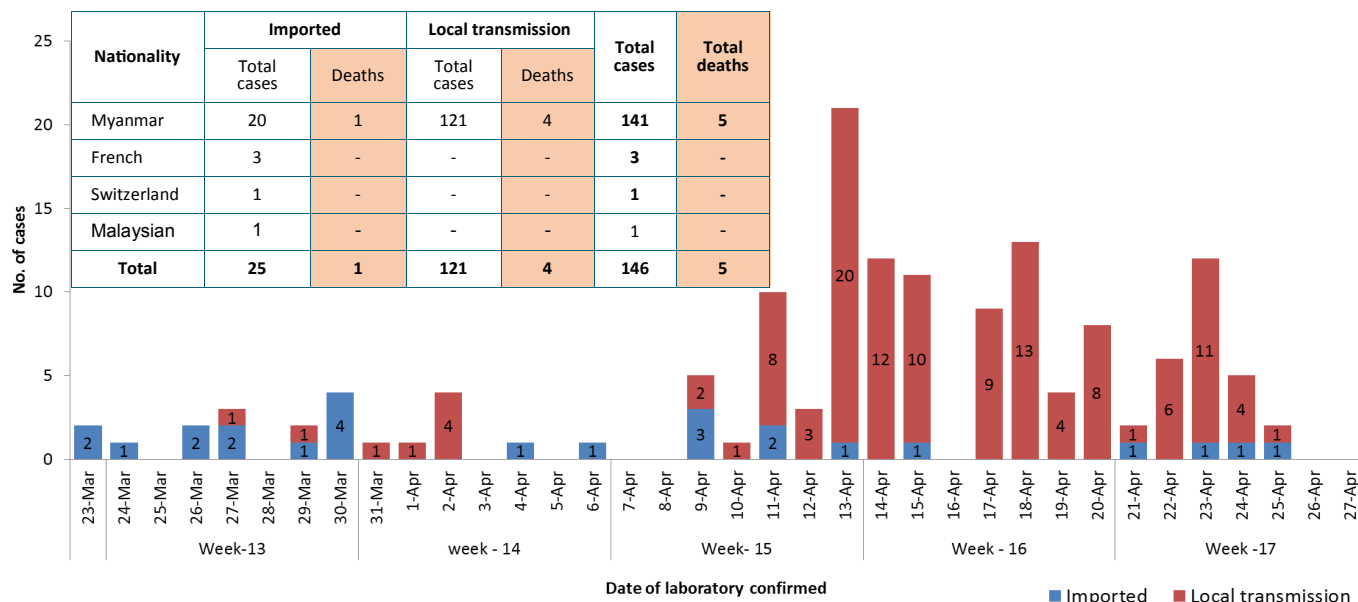


Total tested Specimen for COVID-19
(as of 25-4-2020,24:00)

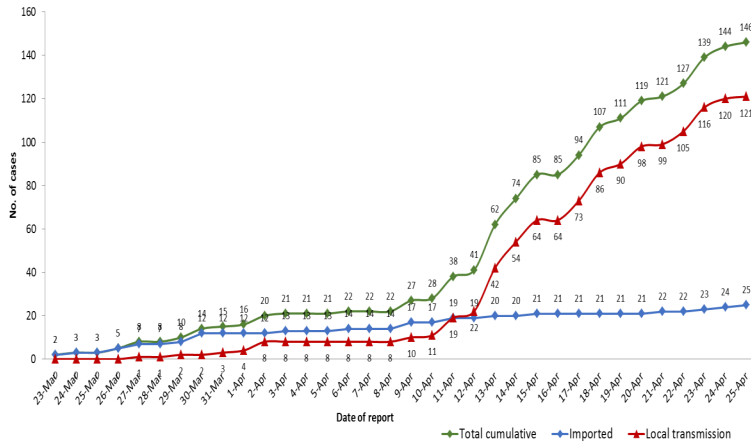
6,531

Negative		Positive	Recovered	Deaths
6,385		146	10	5
No.	State/Region	COVID –19 Confirmed case	Recovered	Deaths
1.	Yangon	113(1 new)	7	4
2.	Bago	7	-	1
3.	Sagaing	7 (1 new)	-	-
4.	Chin	5	-	-
5.	Shan(East)	3		
6.	Mandalay	3	1	-
7.	Shan(South)	2	-	-
8.	Shan(North)	2		
9.	Naypyitaw	1	1	-
10.	Mon	1	1 (new)	-
11.	Magway	1	-	-
12.	Kachin	1		
13.	Kayar	-	-	-
14.	Rakhine	-	-	-
15.	Ayeyarwaddy	-	-	-
16.	Kayin	-	-	-
17.	Thanintharyi	-	-	-
Total		146 (2 new)	10 (1 new)	5

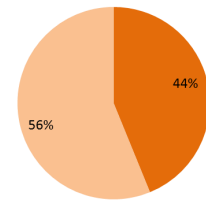
COVID-19 confirmed cases by date of laboratory confirmation (as of 25-4-2020,24:00) n= 146



Total laboratory confirmed cases by date(as of 25.4.2020, 24:00)



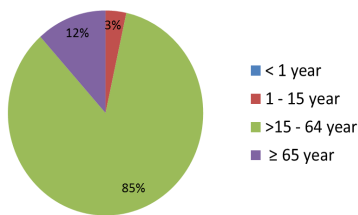
Presentation of COVID-19 confirmed cases (as of 25.4.2020)



56% Asymptomatic 44% Symptomatic

SN	Type of cluster	No. of clusters	# of Cases
1	Family cluster	8	24
2	Work place cluster	3	19
3	Religious event cluster	1	65

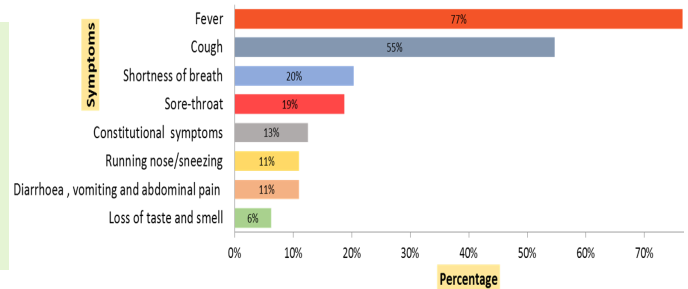
COVID-19 confirmed cases by age group (as of 25.4.2020),n=146



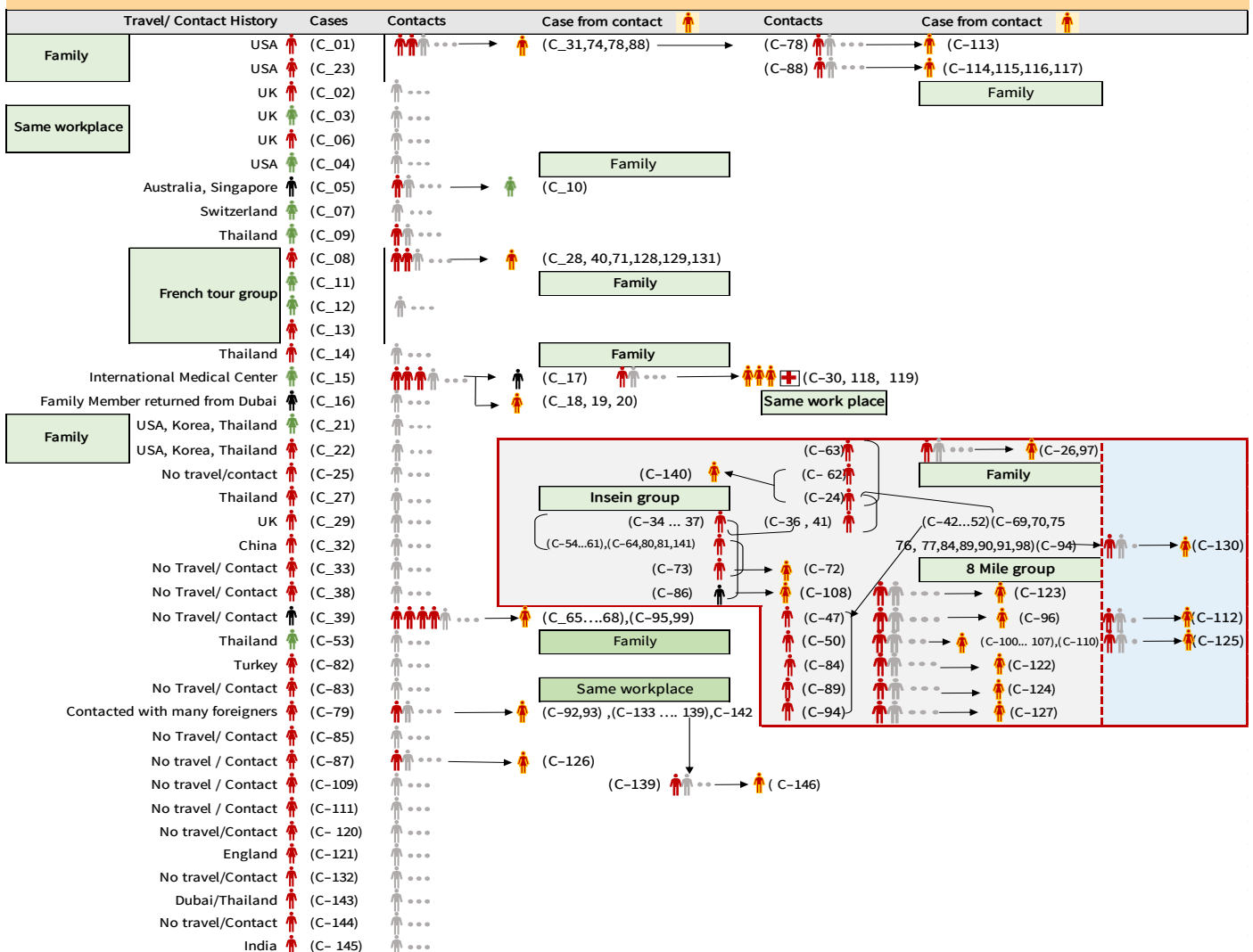
< 1 year
1 - 15 year
>15 - 64 year
≥ 65 year

- Minimum age - 1 year 6 month
- Maximum age - 87 year
- Mean age - 41 year
- Medium age - 38 year

Symptoms analysis among symptomatic confirmed cases (as of 25.4.2020)



Summary of COVID-19 confirmed cases (as of 25-4-2020) ,n= 3,134



Summary of situation (24.4.2020 – 25.4.2020)

Type	New	Total
Suspected and Person Under Investigation (PUI)	110	2,651
Hospital Quarantine	16	167
Facility Quarantine	2,897	42,671

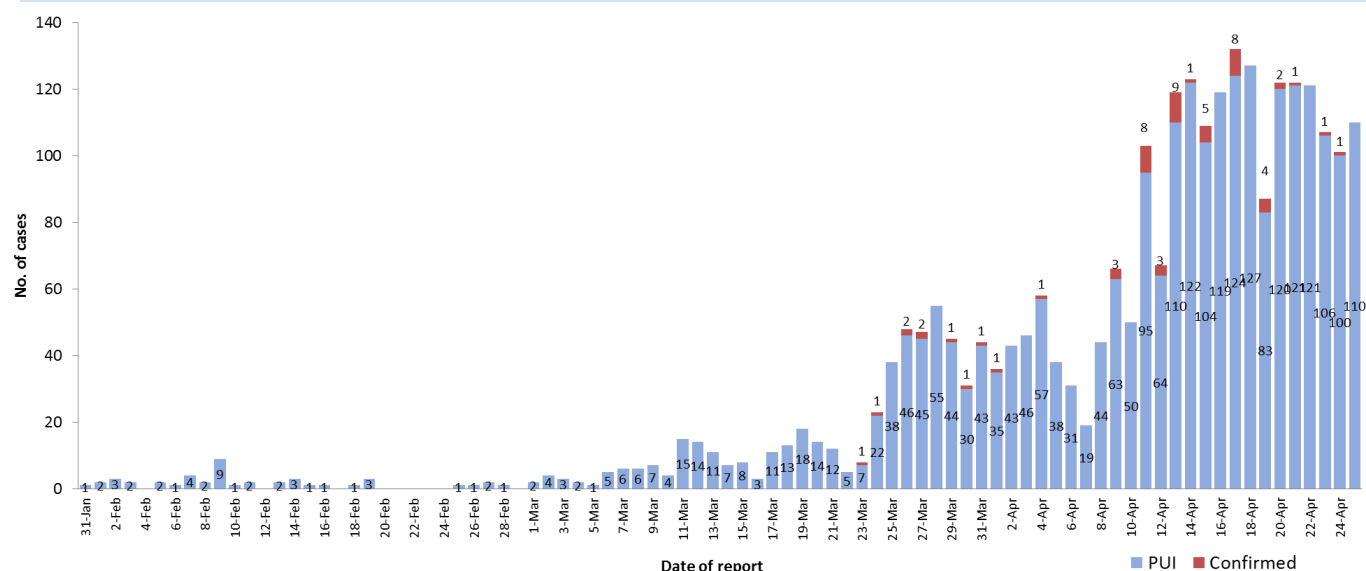
Person under Investigation (PUI) by State/Region hospitals (31.1.2020 – 25.4.2020) n= 2,651

Summary of Facility Quarantine List (as of 25.4.2020)

No.	State/Region	PUI
1.	Yangon	1,301
2.	Mandalay	386
3.	Bago	139
4.	Shan (N)	107
5.	Magway	103
6.	Kayin	91
7.	Mon	83
8.	Ayeyarwaddy	65
9.	Shan (E)	61
10.	Shan (S)	60
11.	Kayah	57
12.	Naypyitaw	54
13.	Sagaing	51
14.	Rakhine	35
15.	Tanintharyi	27
16.	Kachin	18
17.	Chin	13
Total		2,651

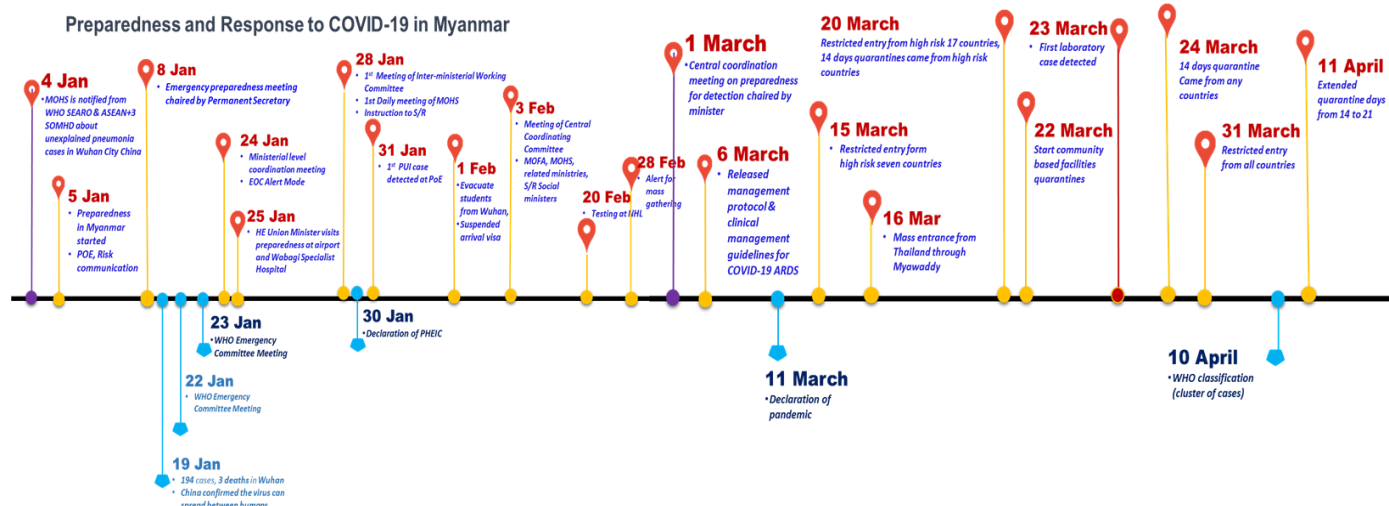
No.	State/Region	No. of facilities	Total no. of quarantine people
1.	Sagaing	1,633	7,573
2.	Magway	1,755	7,439
3.	Kachin	461	5,478
4.	Ayeyarwaddy	693	4,430
5.	Mandalay	562	2,985
6.	Bago	490	2,728
7.	Shan (N)	282	2,758
8.	Rakhine	207	1,789
9.	Shan (E)	39	1,596
10.	Naypyitaw	11	1,240
11.	Shan (S)	161	1,101
12.	Kayin	370	1,012
13.	Mon	59	710
14.	Tanintharyi	228	738
15.	Yangon	12	663
16.	Kayah	24	237
17.	Chin	33	194
Total		7,020	42,671

COVID-19 laboratory confirmed cases among PUI (31.1.2020-25.4.2020), n (PUI)= 2,651, n (confirmed)=57



Preparedness and Response to COVID-19 in Myanmar

Preparedness and Response to COVID-19 in Myanmar



Definition of the terms

(as of 27-4-2020) (Reference – World Health Organization-WHO)

CASE DEFINITIONS

WHO periodically updates the Global Surveillance for human infection with coronavirus disease (COVID-19) document which includes case definitions.

For easy reference, case definitions are included below.

• Suspect case

⇒ A patient with acute respiratory illness (fever and at least one sign/symptom of respiratory disease, e.g., cough, shortness of breath), AND a history of travel to or residence in a location reporting community transmission of COVID-19 disease during the 14 days prior to symptom onset.

OR

⇒ A patient with any acute respiratory illness AND having been in contact with a confirmed or probable COVID-19 case (see definition of contact) in the last 14 days prior to symptom onset;

OR

⇒ A patient with severe acute respiratory illness (fever and at least one sign/symptom of respiratory disease, e.g., cough, shortness of breath; AND requiring hospitalization) AND in the absence of an alternative diagnosis that fully explains the clinical presentation.

• Probable case

⇒ A. A suspect case for whom testing for the COVID-19 virus is inconclusive.
a. Inconclusive being the result of the test reported by the laboratory.

OR

⇒ B. A suspect case for whom testing could not be performed for any reason.

• Confirmed case

⇒ A person with laboratory confirmation of COVID-19 infection, irrespective of clinical signs and symptoms.

• Definition of COVID-19 death

⇒ COVID-19 death is defined for surveillance purposes as a death resulting from a clinically compatible illness in a probable or confirmed COVID-19 case, unless there is a clear alternative cause of death that cannot be related to COVID disease (e.g. trauma). There should be no period of complete recovery between the illness and death.