



# Ministry of Health and Sports (Myanmar)

## Department of Public Health

### Central Epidemiology Unit

( 18 June 2020 )

#### Coronavirus Disease 2019 (COVID-19)

Situation Report - 72

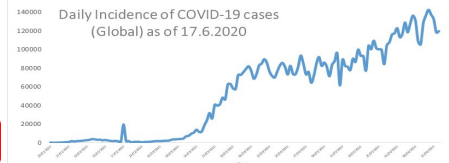
Data as reported by States and Regions by 1:30 AM MST 18 June 2020

**Global Situation**  
(WHO situation report - 149)  
data as of 14:30 MST 17 June 2020

**Confirmed cases**  
**8,061,550**

**Deaths**  
**440,290**

**Case Fatality Rate**  
**5.4 %**



#### Myanmar Situation

**Total tested**  
**56,726**

**Confirmed cases**  
**263**

**Negative**  
**56,463**

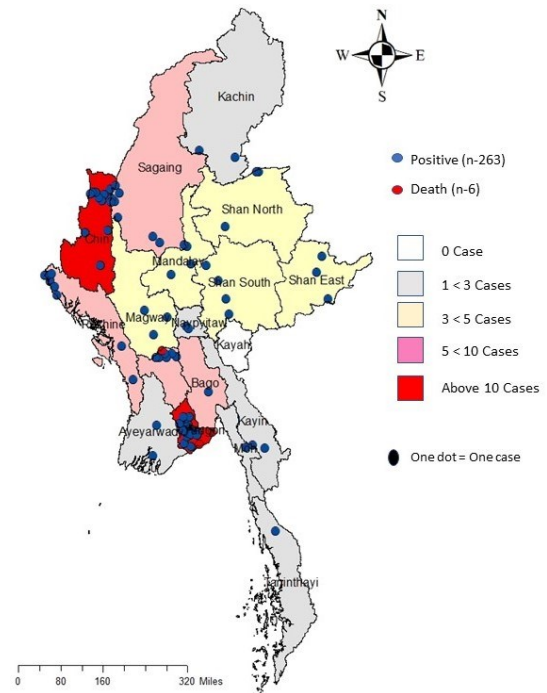
**Recovered**  
**187**  
71.1 % of confirmed cases

**Active**  
**70**  
26.6% of confirmed cases

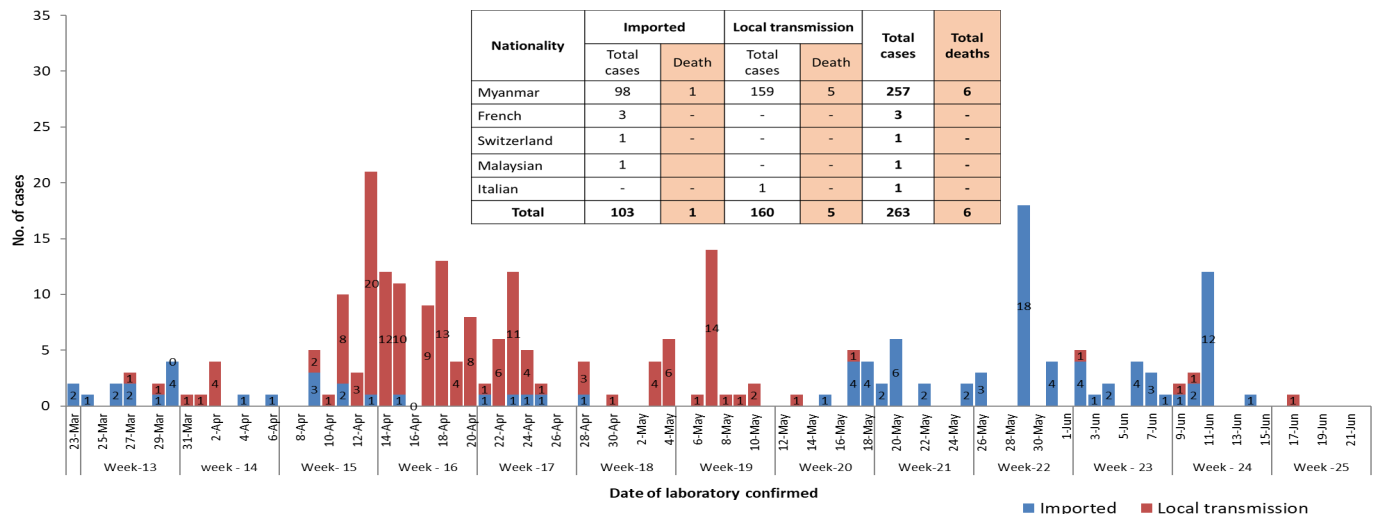
**Death**  
**6**  
2.2% of confirmed cases

No.	State/Region	COVID -19 Confirmed case	Recovered	Deaths
1.	Yangon	201	145(1 New)	5
2.	Chin	10	6	-
3.	Sagaing	9	7	-
4.	Rakhine	9 (1 New)	1	-
5.	Bago	8	7	1
6.	Shan(South)	4	2	-
7.	Mandalay	3	3	-
8.	Shan(East)	3	4 (1 New)	-
9.	Shan(North)	3	2	-
10.	Magway	3	2	-
11.	Naypyitaw	2	2	-
12.	Kayin	2	1	-
13.	Ayeyarwaddy	2	2	-
14.	Kachin	2	1	-
15.	Mon	1	1	-
16.	Thanintharyi	1	1	-
17.	Kayah	-	-	-
<b>Total</b>		<b>263 (1 New)</b>	<b>187(2 New)</b>	<b>6</b>

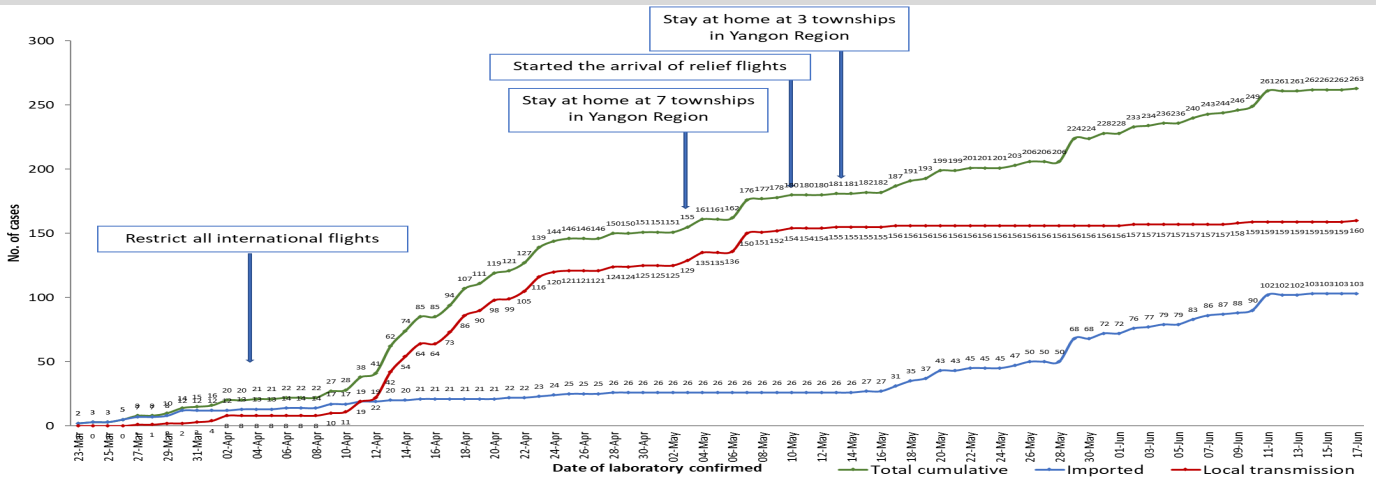
Map showing COVID-19 laboratory confirmed cases



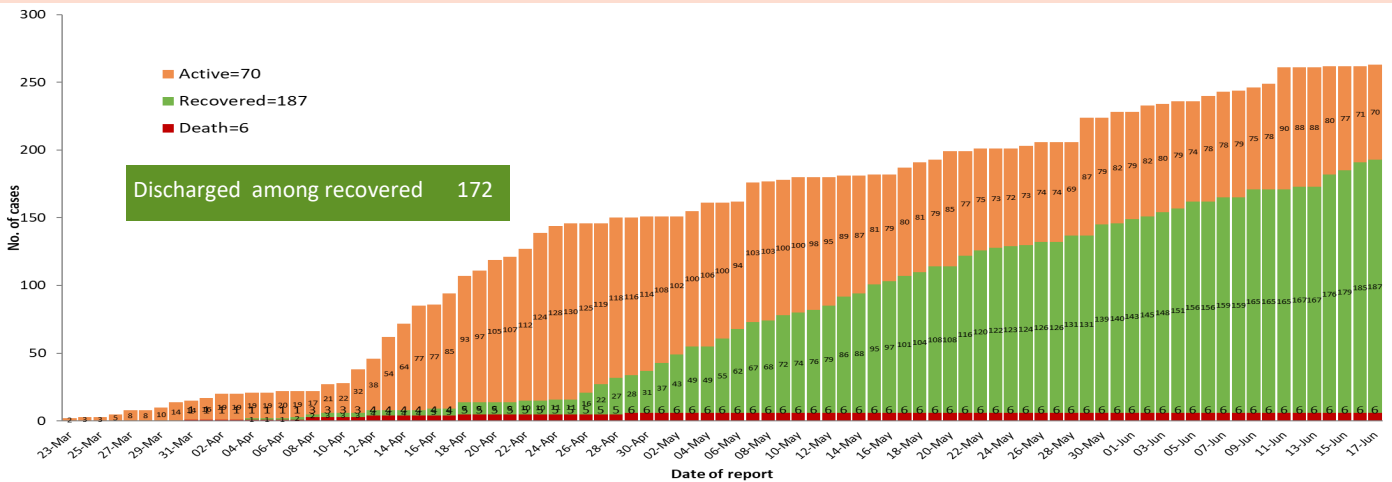
COVID-19 confirmed cases by types of transmissions (as of 18-6-2020, 1:30 am) n=263



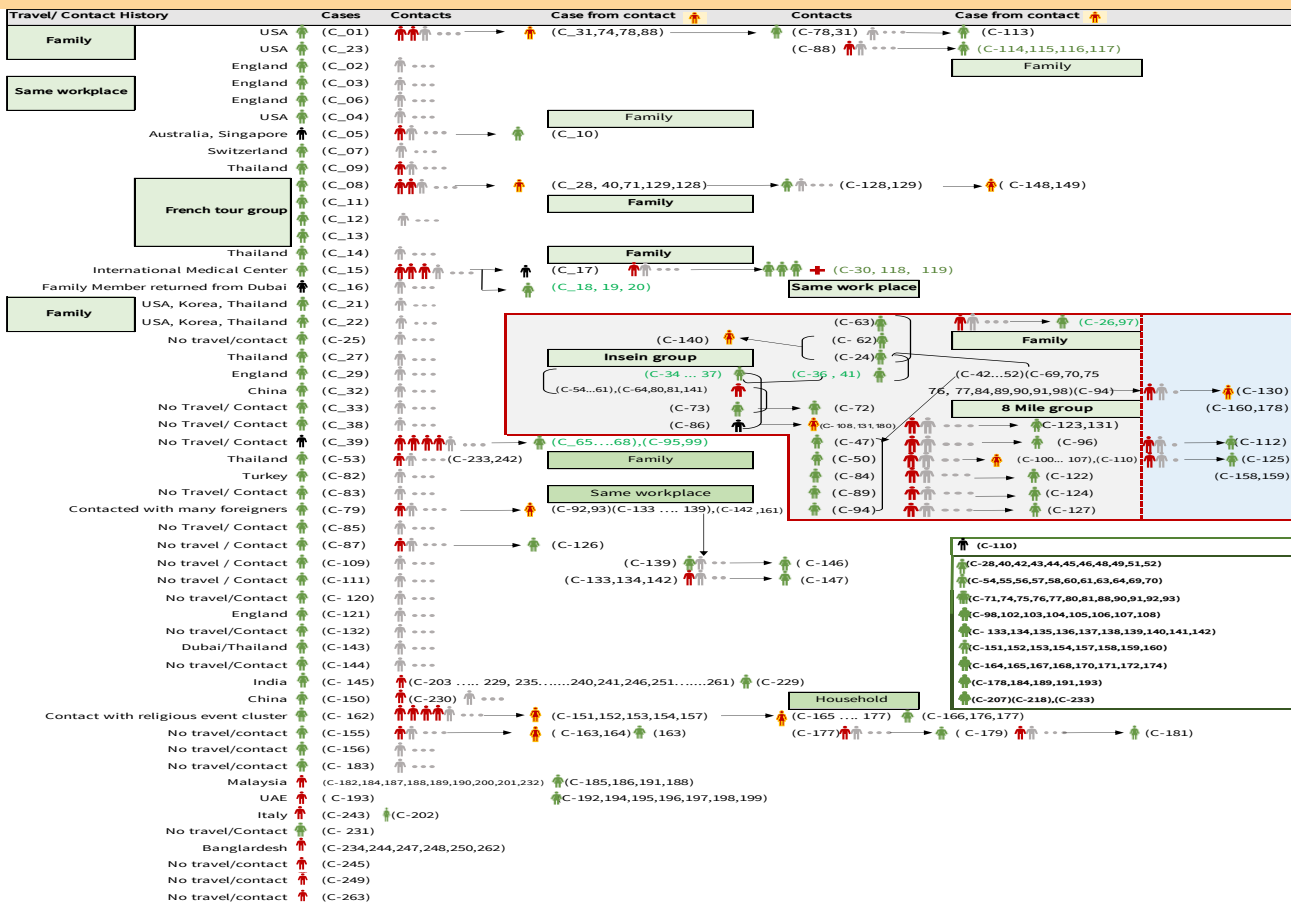
## Total laboratory confirmed cases by date (as of 18.6.2020, 1:30 am), n= 263



## Cumulative Number of active confirmed cases, recovered and deaths ( 23.3.2020 – 17-6-2020), n (cumulative)=263



## Summary of COVID-19 confirmed cases (as of 17-6-2020) ,n (contacts)= 5,436



## Summary of current situation

Type	New (16.6.2020-17.6.2020)	Total (on 17.6.2020)
Suspected and Person Under Investigation (PUI)	36	238
Hospital Quarantine	13	85
Facility Quarantine	1,261	41,034

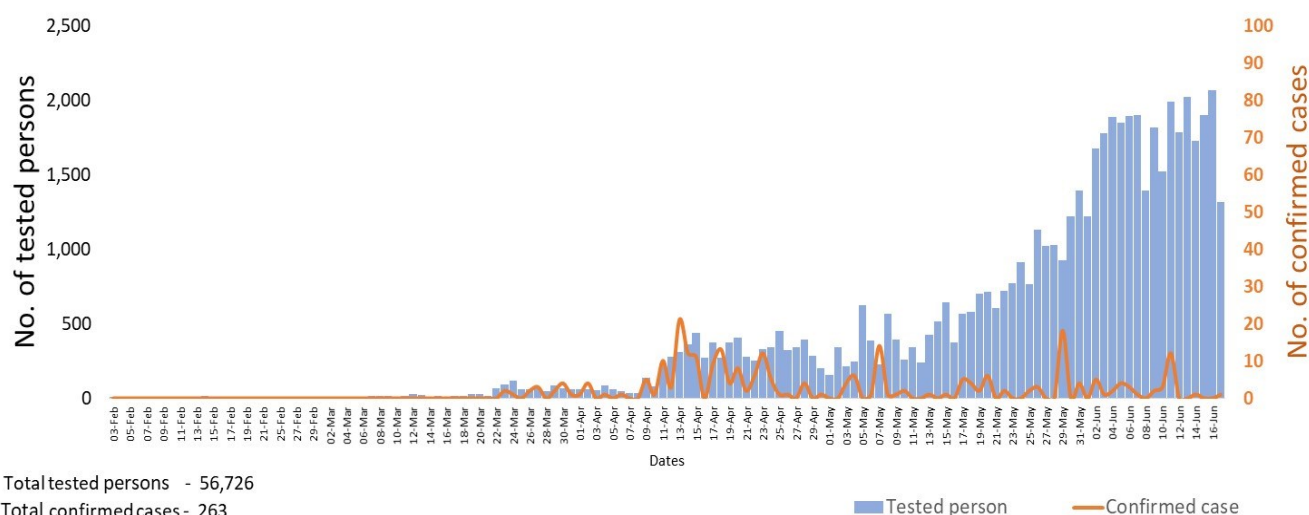
### Person under Investigation (PUI) by State/Region hospitals (16.6.2020 – 17.6.2020) n= 5,623

No.	State/Region	PUI
1.	Yangon	2,901
2.	Mandalay	1,045
3.	Kayin	209
4.	Mon	207
5.	Shan(N)	197
6.	Magway	186
7.	Bago	179
8.	Shan ( E )	113
9.	Ayeyarwaddy	102
10.	Shan(S)	94
11.	Sagaing	82
12.	Kayah	76
13.	Naypyitaw	63
14.	Rakhine	60
15.	Thanintharyi	54
16.	Kachin	33
17.	Chin	22
<b>Total</b>		<b>5,623</b>

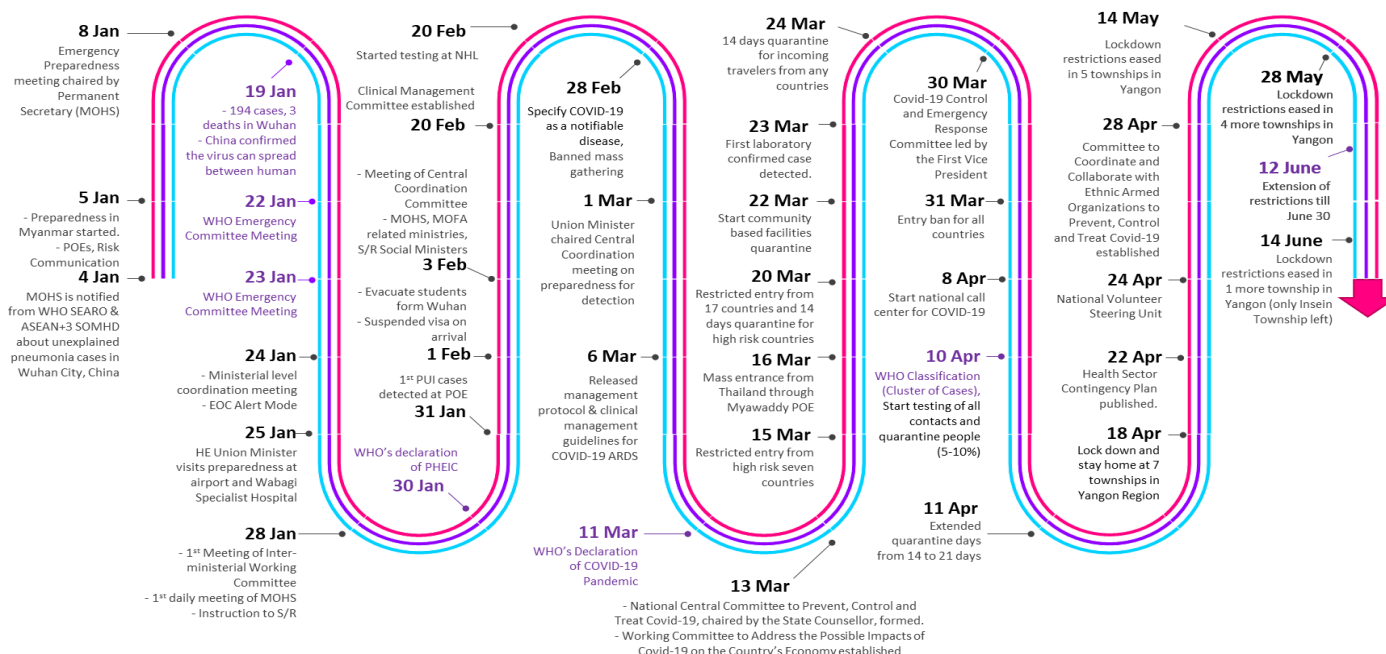
### No. of Facility Quarantine sites and Quarantined people on 17.6.2020

No.	State/Region	No. of facilities	Total no. of quarantine
1.	Bago	466	6,066
2.	Magway	2,635	6,159
3.	Kayin	1007	4,431
4.	Mon	344	3,835
5.	Kachin	397	3,449
6.	Yangon	78	2,726
7.	Mandalay	179	2,470
8.	Sagaing	969	2,349
9.	Rakhine	501	2,266
10.	Shan South	128	1,681
11.	Ayeyarwaddy	230	1,645
12.	Tanintharyi	189	1,226
13.	Naypyitaw	19	1,006
14.	Shan North	239	1003
15.	Chin	33	264
16.	Shan East	11	254
17.	Kayah	18	204
<b>Total</b>		<b>7,443</b>	<b>41,034</b>

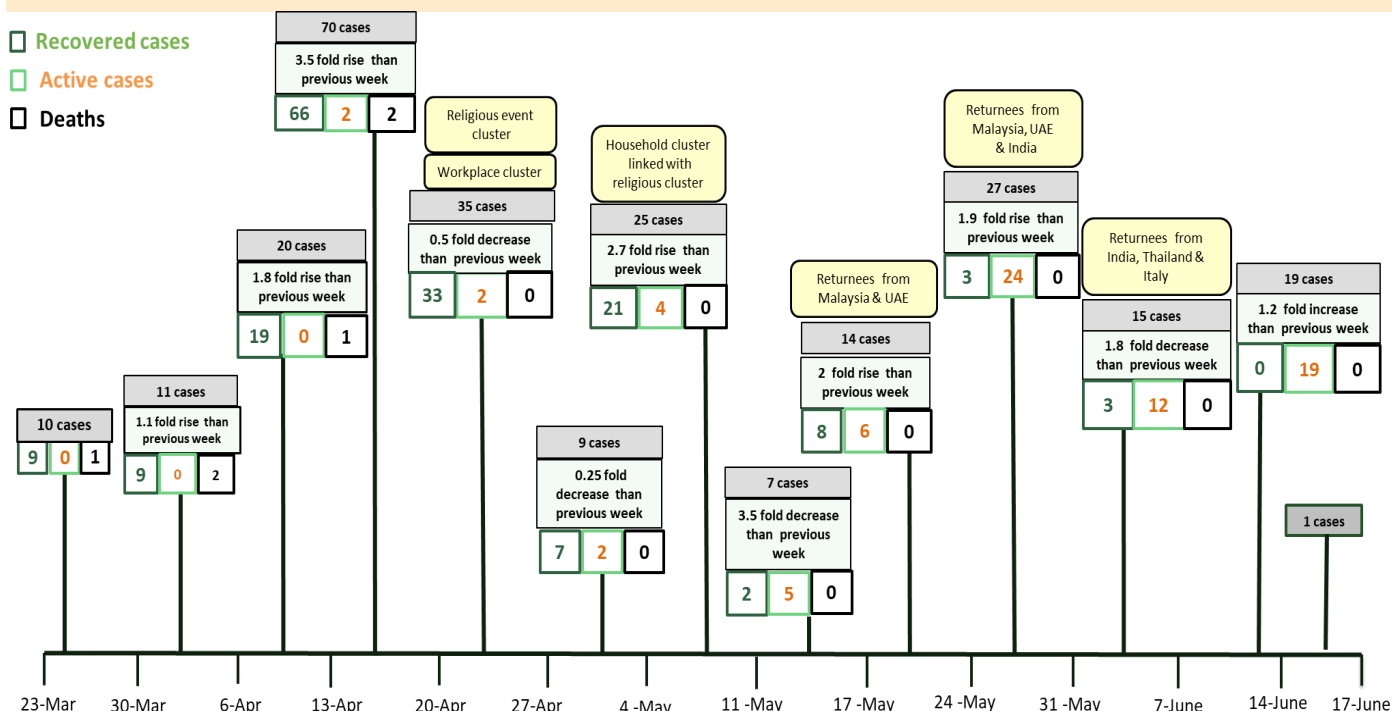
### COVID-19 confirmed cases among tested by date (as of 17.6.2020)



## Timeline of Preparedness and Response to COVID-19 in Myanmar (as of 17.6.2020)



## Summary of new confirmed cases detection after first two cases (as of 17.6.2020)



- Confirmed cases were detected as a peak in the 4th week after first confirmed cases due to the religious event cluster.
- Confirmed cases were decreased but still raised than the first 3 weeks due to the religious event cluster and workplace cluster.
- There were an increased in numbers of cases in the 7th week after the first two cases due to the household cluster linked with a religious cluster.
- Confirmed cases were detected by a nearly two-fold rise in the 9th and 10th weeks after the first two cases because of returnees coming back by relief flights.