



Ministry of Health and Sports (Myanmar)

Department of Public Health

Central Epidemiology Unit

(25 April 2020)

Coronavirus Disease 2019 (COVID-19)

Situation Report - 19

Data as reported by States and Regions by 10:00 PM MST 24 April 2020

Global Situation

(according to WHO situation report - 95, data as of 14:30 MST 24 April 2020)

Confirmed cases	Deaths
2,626,321	181,938

Myanmar

Map showing COVID-19 laboratory confirmed cases



● Case

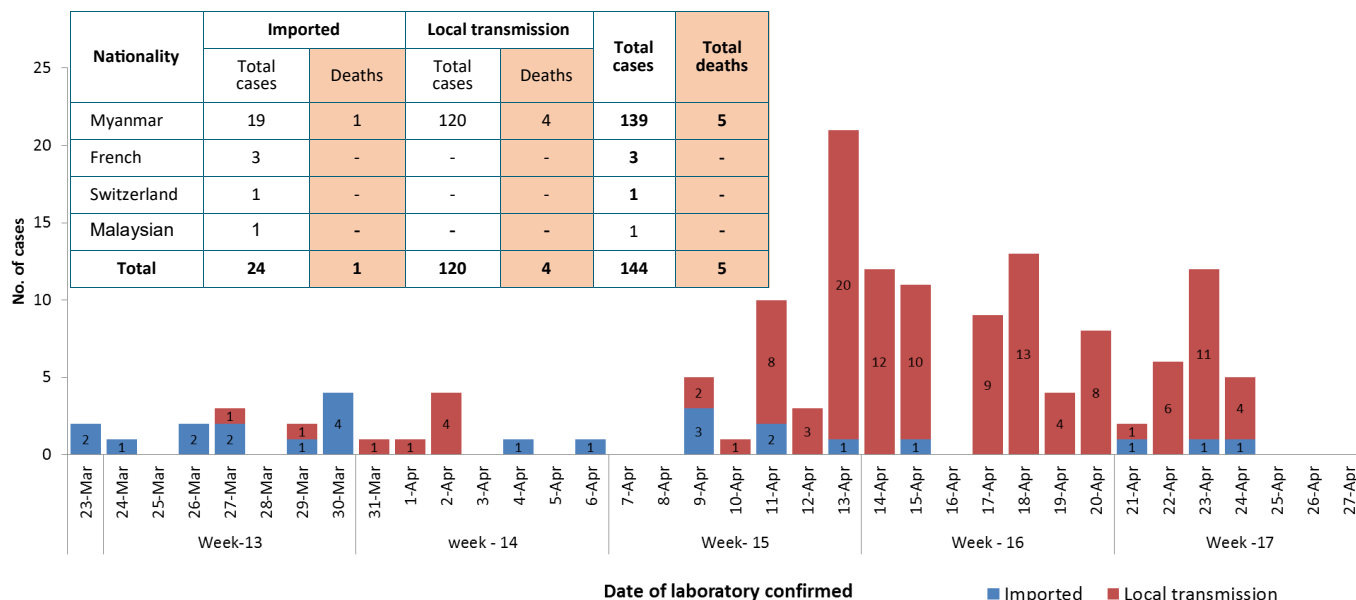
● Death

n (case) = 144

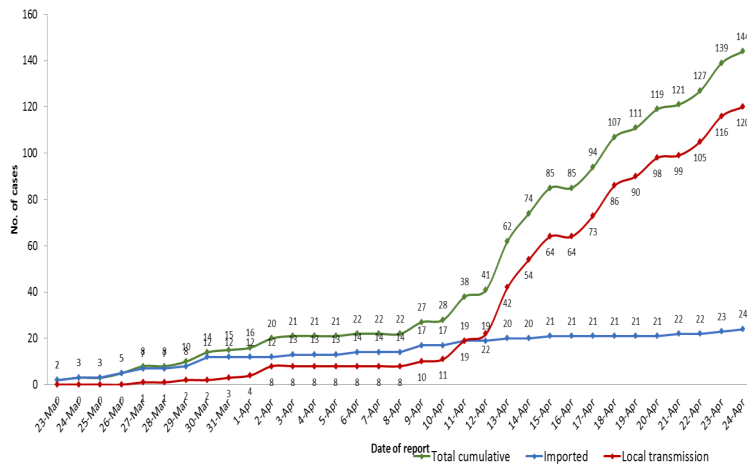
n (death) = 5

Total tested Specimen for COVID-19 (as of 24-4-2020,10:00 PM)				
6,115				
Negative	Positive	Recovered	Deaths	
5,971	144	9	5	
No.	State/Region	COVID-19 Confirmed case	Recovered	Deaths
1.	Yangon	112 (3 new)	7	4
2.	Bago	7	-	1
3.	Sagaing	6	-	-
4.	Chin	5	-	-
5.	Shan(East)	3	-	-
6.	Mandalay	3	1	-
7.	Shan(South)	2	-	-
8.	Shan(North)	2 (1 new)	-	-
9.	Naypyitaw	1	1	-
10.	Mon	1	-	-
11.	Magway	1	-	-
12.	Kachin	1 (new)	-	-
13.	Kayah	-	-	-
14.	Rakhine	-	-	-
15.	Ayeyarwaddy	-	-	-
16.	Kayin	-	-	-
17.	Thanintharyi	-	-	-
Total		144 (5 new)	9	5

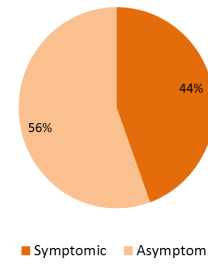
COVID-19 confirmed cases by date of laboratory confirmation (as of 24-4-2020,10:00 PM) n= 144



Total laboratory confirmed cases by date(as of 24.4.2020, 10:00 PM)

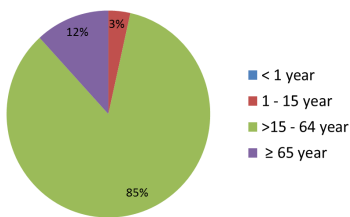


Presentation of COVID-19 confirmed cases (as of 24.4.2020)



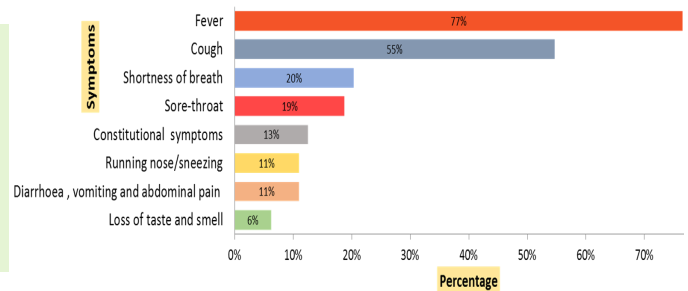
SN	Type of cluster	No. of clusters	# of Cases
1	Family cluster	8	24
2	Work place cluster	3	18
3	Religious event cluster	1	65

COVID-19 confirmed cases by age group (as of 24.4.2020),n=144

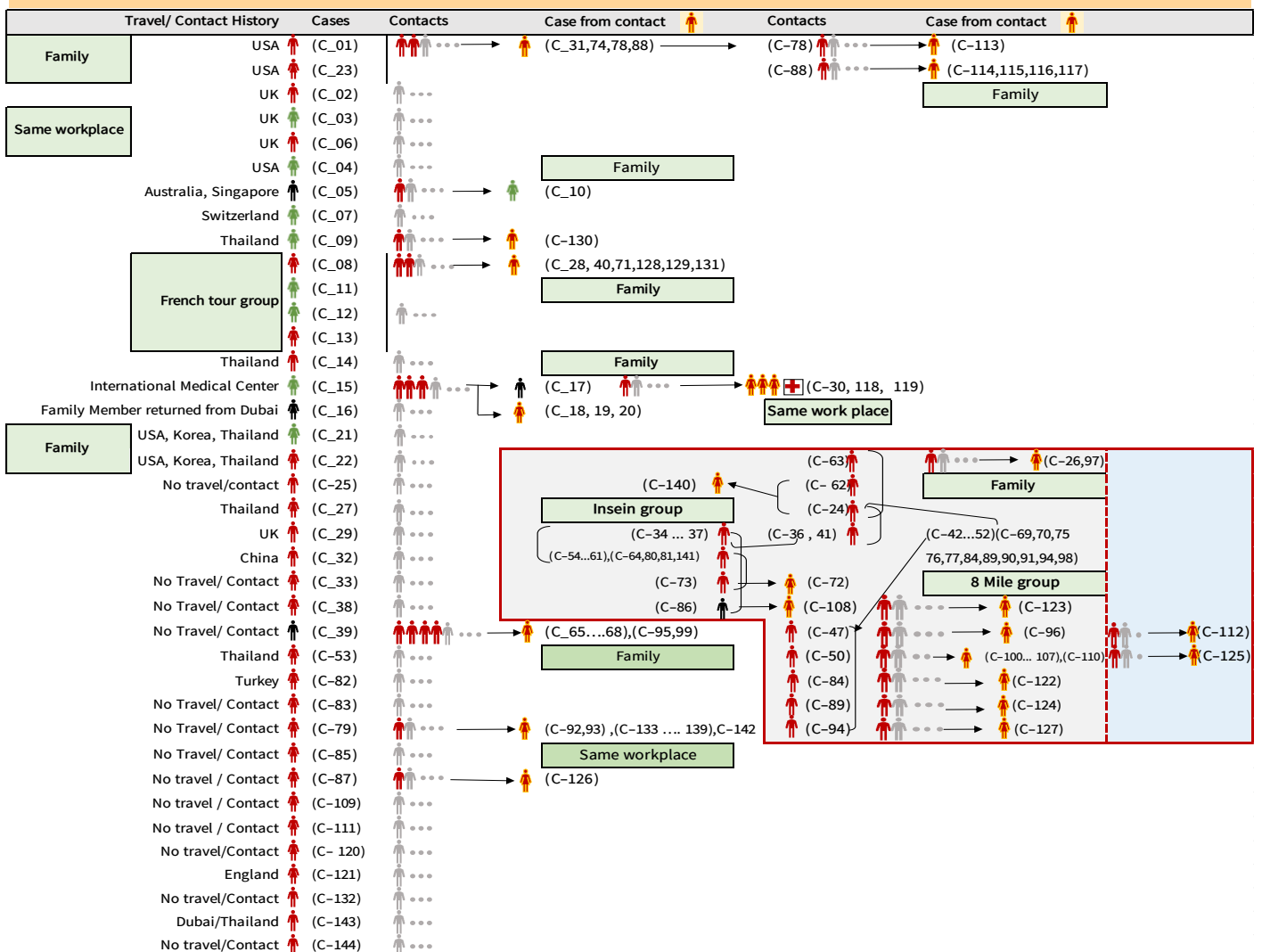


- Minimum age - 1 year 6 month
- Maximum age - 87 year
- Mean age - 41 year
- Medium age - 38 year

Symptoms analysis among symptomatic confirmed cases (as of 24.4.2020)



Summary of COVID-19 confirmed cases (as of 24-4-2020) ,n=2,876



Summary of situation (23.4.2020 – 24.2020)

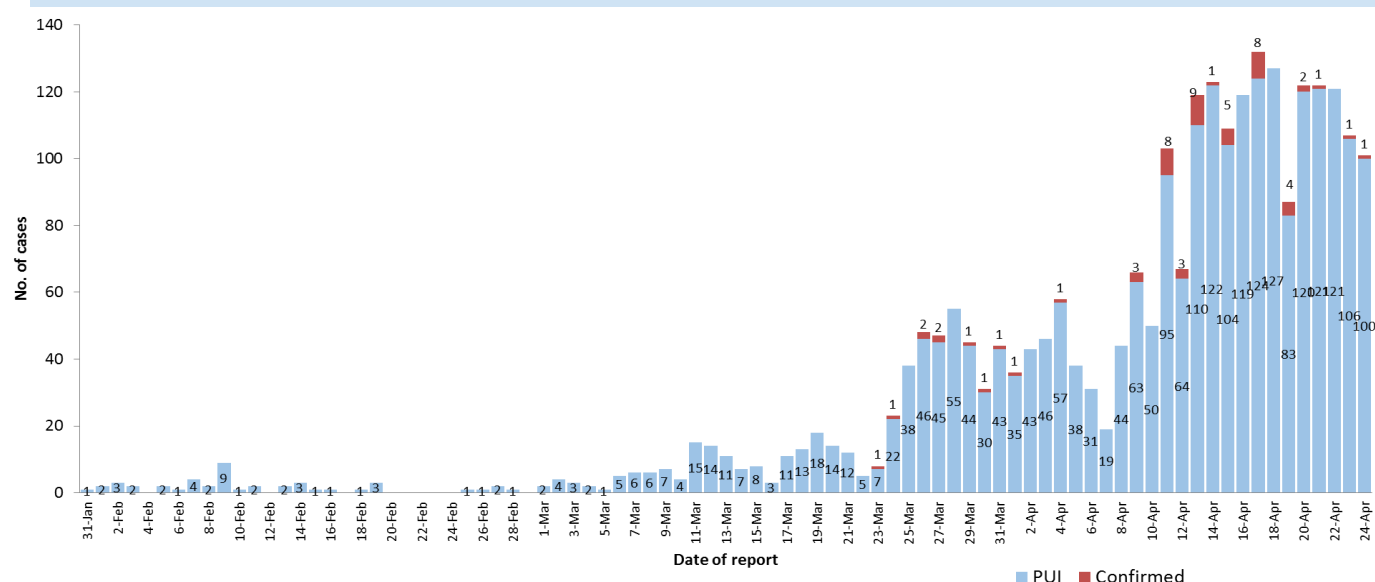
Type	New	Total
Suspected and Person Under Investigation (PUI)	101	2,541
Hospital Quarantine	12	164
Facility Quarantine	4,199	41,572

Person under Investigation (PUI) by State/Region hospitals (31.1.2020 – 24.4.2020) n= 2,541

Summary of Facility Quarantine List (as of 24.4.2020)

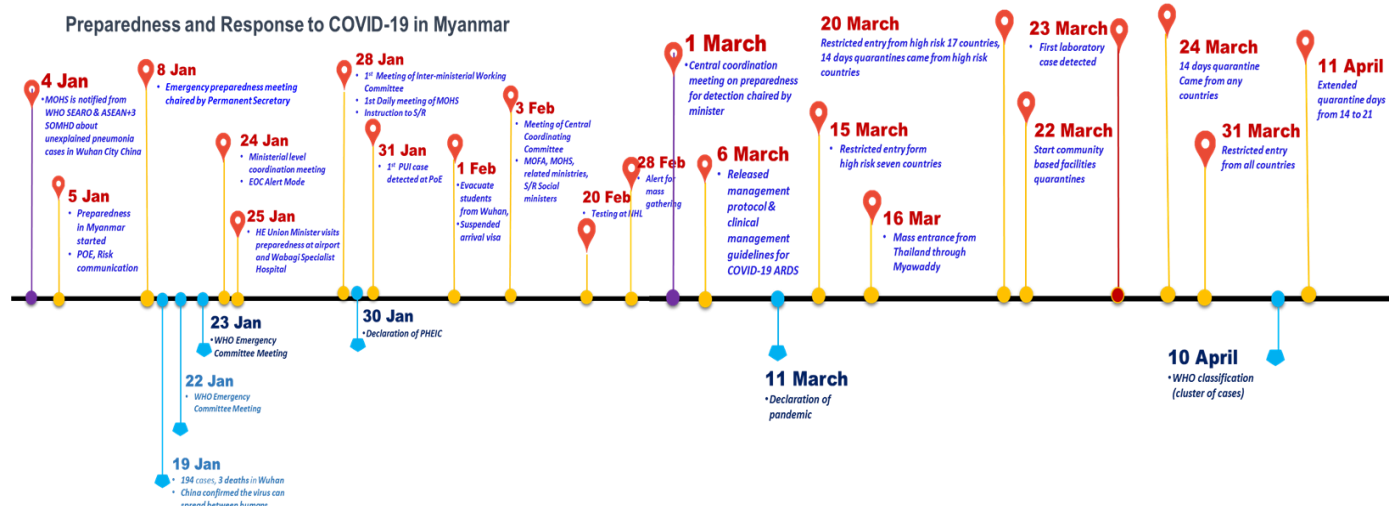
No.	State/Region	PUI	No.	State/Region	No. of facilities	Total no. of quarantine people
1.	Yangon	1244	1.	Sagaing	1,633	7,673
2.	Mandalay	358	2.	Magway	1,755	7,439
3.	Bago	136	3.	Kachin	455	5,350
4.	Shan (N)	104	4.	Ayeyarwaddy	527	3,101
5.	Magway	100	5.	Mandalay	580	2,998
6.	Kayin	87	6.	Bago	521	2,902
7.	Mon	79	7.	Shan (N)	281	2,736
8.	Ayeyarwaddy	63	8.	Rakhine	162	1,802
9.	Shan (E)	61	9.	Shan (E)	39	1,638
10.	Kayah	57	10.	Naypyitaw	11	1,225
11.	Shan (S)	55	11.	Shan (S)	176	1,178
12.	Naypyitaw	54	12.	Kayin	371	1,029
13.	Sagaing	50	13.	Mon	68	794
14.	Rakhine	35	14.	Tanintharyi	228	697
15.	Tanintharyi	27	15.	Yangon	12	602
16.	Kachin	18	16.	Kayah	24	222
17.	Chin	13	17.	Chin	33	186
Total		2,541	Total		6,876	41,572

COVID-19 laboratory confirmed cases among PUI (31.1.2020-24.4.2020), n (PUI)= 2541, n (confirmed)=57



Preparedness and Response to COVID-19 in Myanmar

Preparedness and Response to COVID-19 in Myanmar



Definition of the term “Contact Person”

(as of 7-4-2020) (Reference – *European Center for Disease Prevention and Control*)

- ⇒ A contact of a COVID-19 case is any person who had contact with a COVID-19 case within a timeframe ranging from 48 hours before the onset of symptoms of the case to 14 days after the onset of symptoms.
- ⇒ If the case had no symptoms, a contact person is defined as someone who had contact with the case within a timeframe ranging from 48 hours before the sample which led to confirmation was taken to 14 days after the sample was taken.

Classification of contact based on level of exposure

High-risk exposure (Close Contact)

A person:

- ◆ having had face-to-face contact with a COVID-19 case within one metre for more than 15 minutes
- ◆ having had physical contact with a COVID-19 case
- ◆ having unprotected direct contact with infectious secretions of a COVID-19 case (e.g. being coughed on)
- ◆ who was in a closed environment (e.g. household, classroom, meeting room, hospital waiting room, etc.) with a COVID-19 case for more than 15 minutes
- ◆ in an aircraft, sitting within two seats (in any direction) of the COVID-19 case, travel companions or persons providing care, and crew members serving in the section of the aircraft where the index case was seated (if severity of symptoms or movement of the case indicate more extensive exposure, passengers seated in the entire section or all passengers on the aircraft may be considered close contacts)
- ◆ A healthcare worker or other person providing care to a COVID-19 case, or laboratory workers handling specimens from a COVID-19 case, without recommended PPE or with a possible breach of PPE

Low-risk exposure

A person:

- ◆ having had face-to-face contact with a COVID-19 case within one metre for less than 15 minutes
- ◆ who was in a closed environment with a COVID-19 case for less than 15 minutes
- ◆ travelling together with a COVID-19 case in any mode of transport
- ◆ A healthcare worker or other person providing care to a COVID-19 case, or laboratory workers handling specimens from a COVID-19 case, wearing the recommended PPE

Hotline Number— 0673420268

Data source - CEU, DMS, NHL, States and Regions Health Department