



# Ministry of Health and Sports (Myanmar)

## Department of Public Health

### Central Epidemiology Unit

( 9 May 2020)

#### Coronavirus Disease 2019 (COVID-19)

Situation Report - 32

Data as reported by States and Regions by 10:30 PM MST 8 May 2020

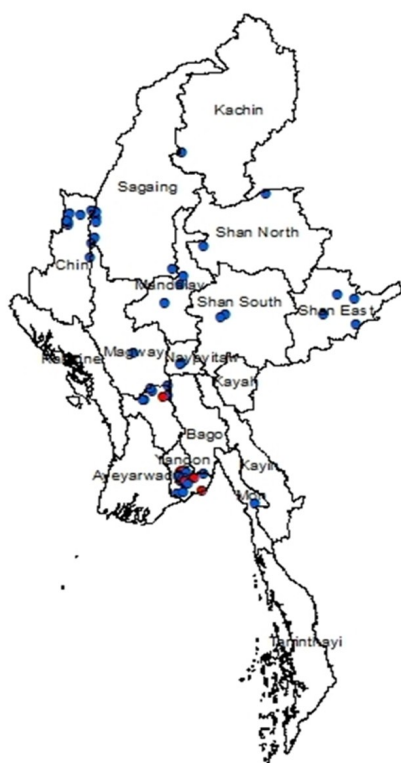
#### Global Situation

(according to WHO situation report - 109, data as of 14:30 MST 8 May 2020)

Confirmed cases	Deaths
3,759,967	259,474

#### Myanmar

Map showing COVID-19 laboratory confirmed cases



● Case  
● Death

n (case) = 177

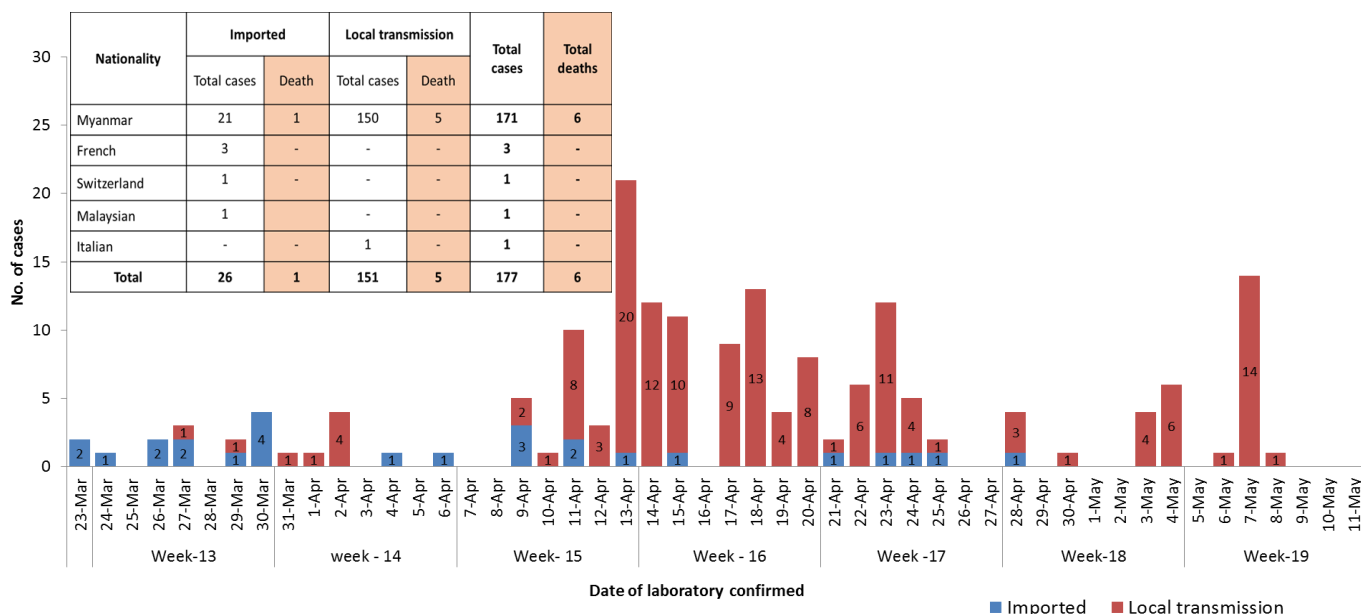
n (death) = 6

Total tested Specimen for COVID-19  
(as of 8-5-2020, 10:30 PM)

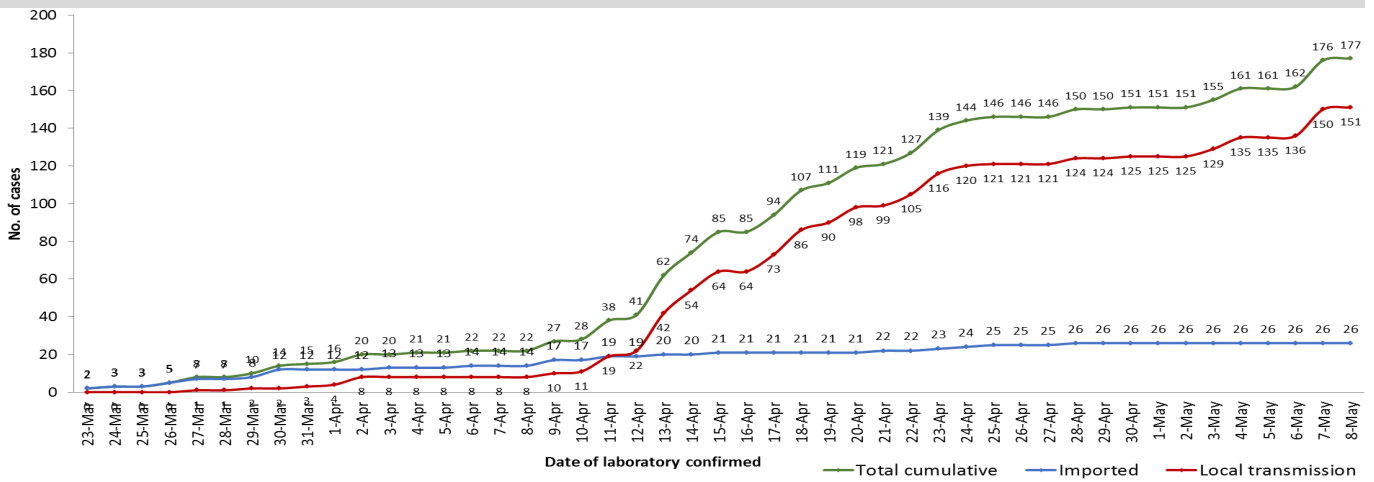
10,832

Negative		Positive	Recovered	Deaths
10,655		177	68	6
No.	State/Region	COVID –19 Confirmed case	Recovered	Deaths
1.	Yangon	142 (1 new)	54	5
2.	Bago	7	3	1
3.	Sagaing	7	1	-
4.	Chin	6	1	-
5.	Shan(East)	3	2	
6.	Mandalay	3	2	-
7.	Shan(South)	2	1	-
8.	Shan(North)	2	1 (new)	
9.	Naypyitaw	2	1	-
10.	Mon	1	1	-
11.	Magway	1	1	-
12.	Kachin	1	-	
13.	Kayar	-	-	-
14.	Rakhine	-	-	-
15.	Ayeyarwaddy	-	-	-
16.	Kayin	-	-	-
17.	Thanintharyi	-	-	-
Total		177 ( 1 new)	68 ( 1 new)	6

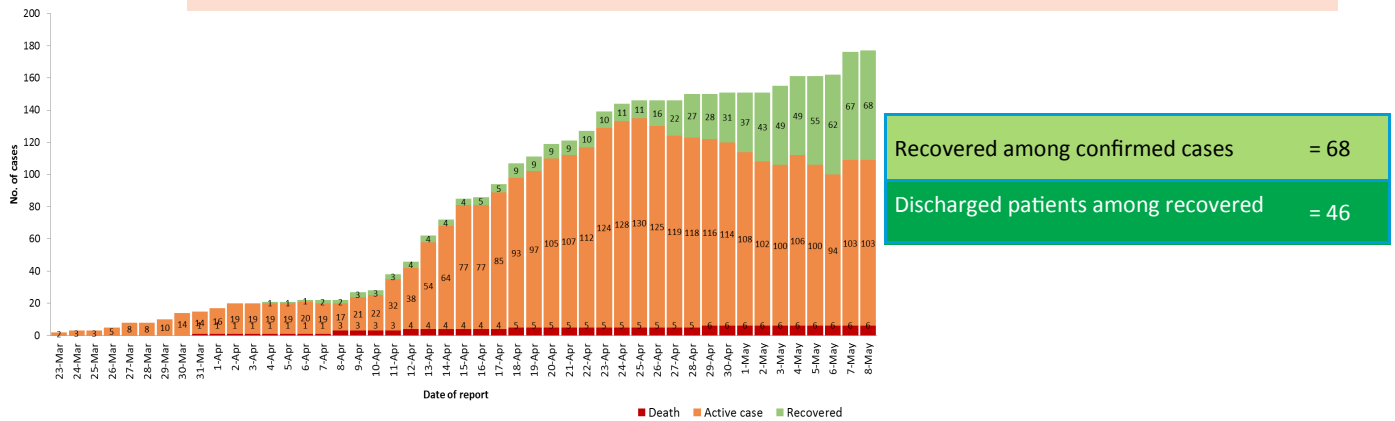
COVID-19 confirmed cases by date of laboratory confirmation (as of 8-5-2020,10:30 PM) n=177



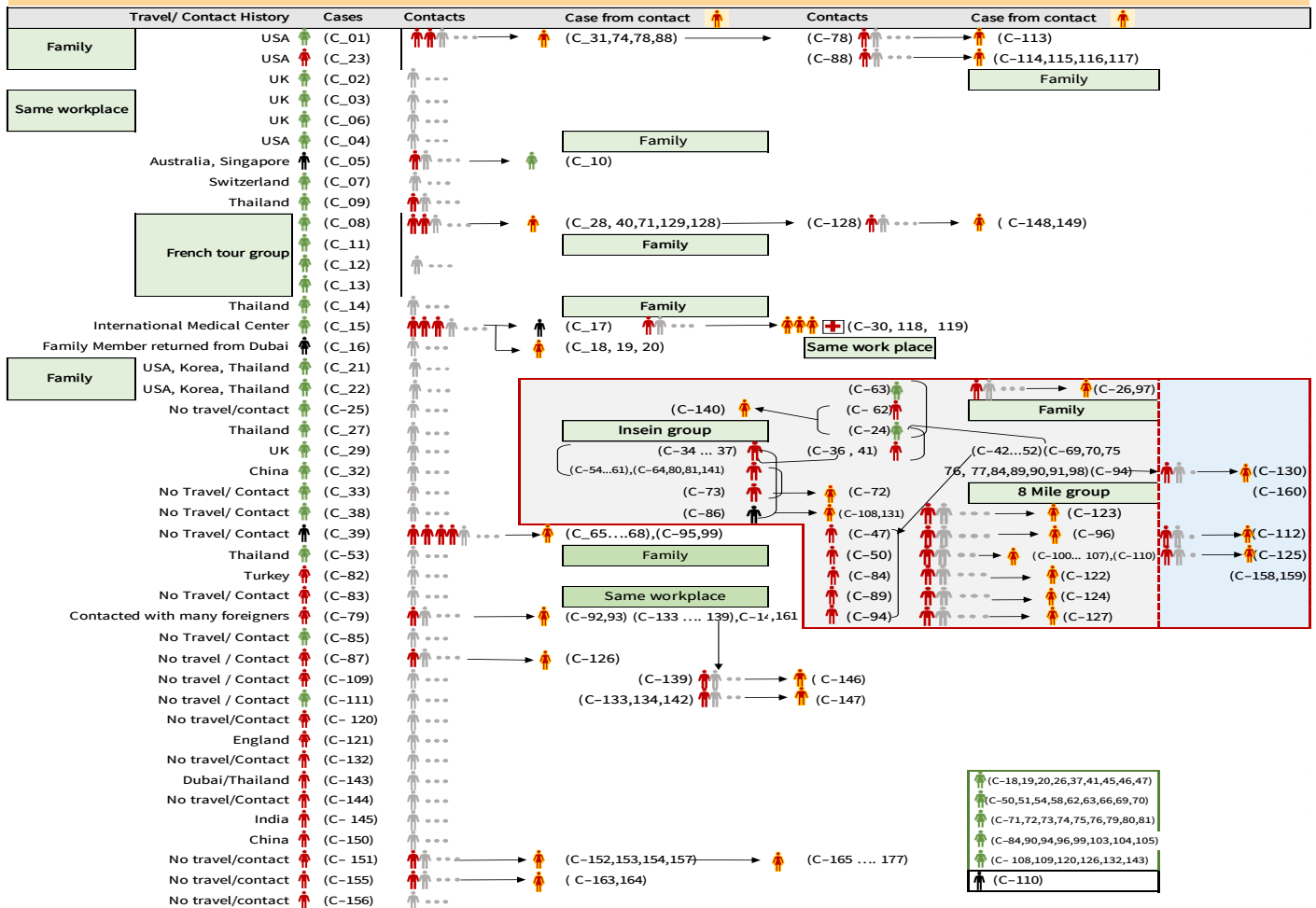
## Total laboratory confirmed cases by date (as of 8.5.2020, 10:30 PM), n= 177



## Cumulative Numbers of active confirmed cases , recovered and death ( 23.3.2020-8.5.2020) , n= 177



## Summary of COVID-19 confirmed cases (as of 8-5-2020) ,n= 3,639



## Summary of situation (7.5.2020– 8.5.2020)

Type	New	Total (as of 8.5.2020)
Suspected and Person Under Investigation (PUI)	92	3,710
Hospital Quarantine	26	112
Facility Quarantine	3,596	55,609

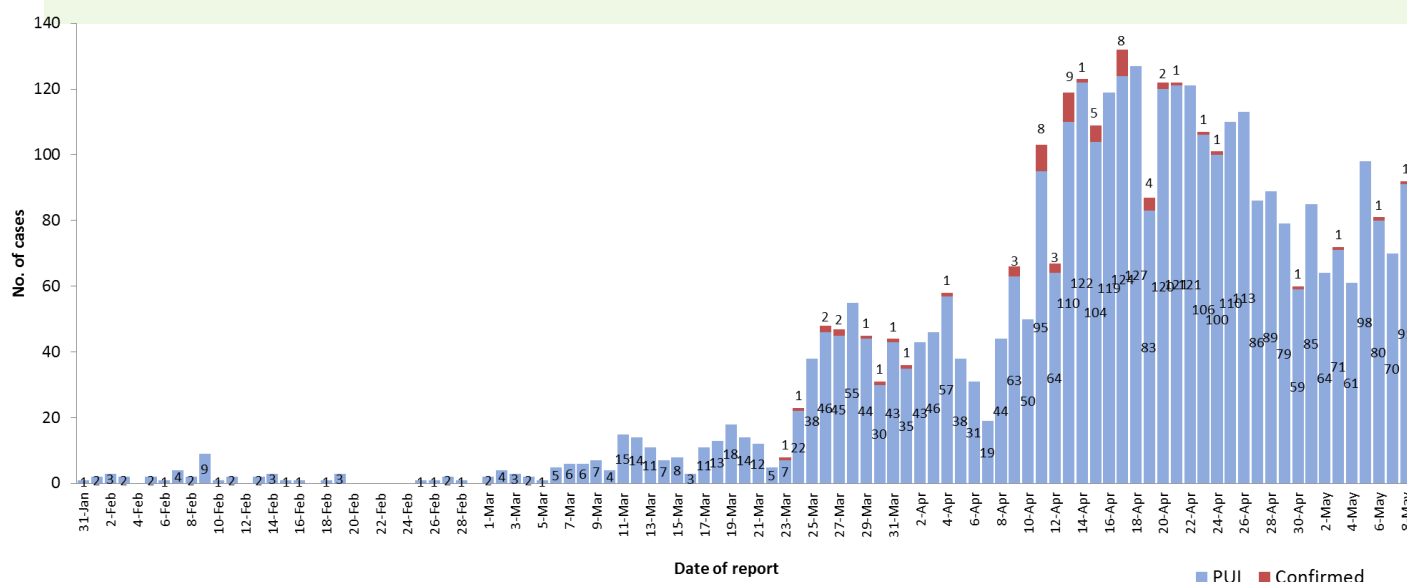
Person under Investigation (PUI) by State/Region hospitals (31.1.2020 – 8.5.2020) n= 3,701

No.	State/Region	PUI
1.	Yangon	1,850
2.	Mandalay	624
3.	Bago	159
4.	Shan (N)	149
5.	Mon	131
6.	Magway	127
7.	Kayin	124
8.	Ayeyarwaddy	81
9.	Shan (E)	78
10.	Shan (S)	71
11.	Sagaing	64
12.	Kayah	59
13.	Naypyitaw	58
14.	Tanintharyi	46
15.	Rakhine	41
16.	Kachin	25
17.	Chin	14
<b>Total</b>		<b>3,701</b>

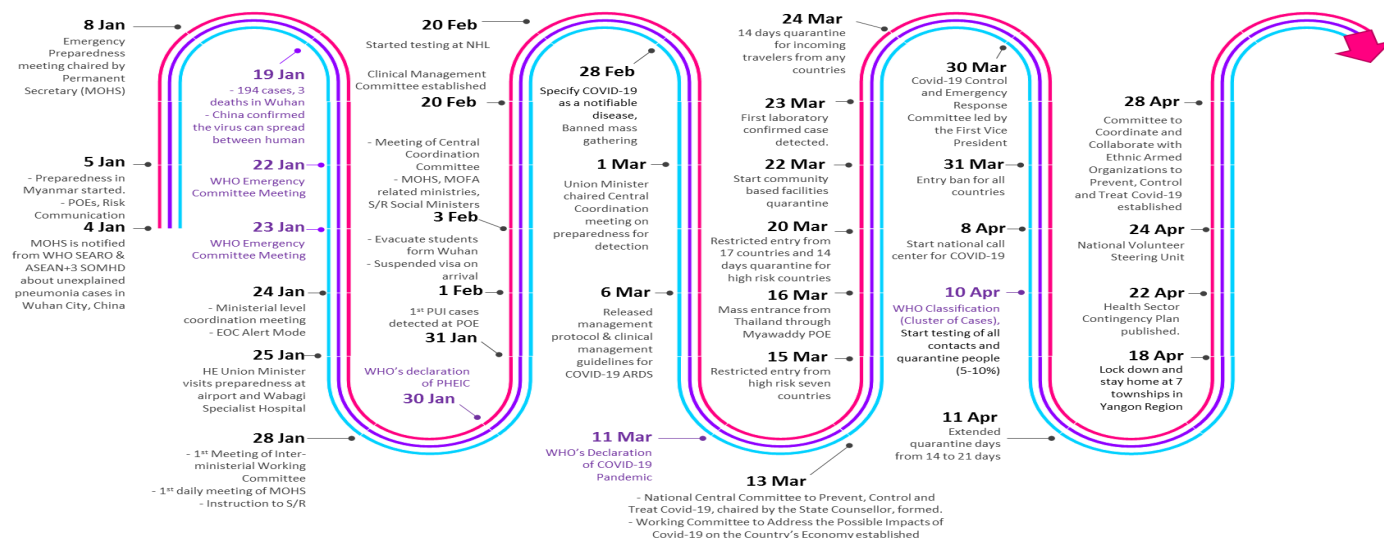
## Summary of Facility Quarantine List (as of 8.5.2020)

No.	State/Region	No. of facilities	Total no. of quarantine people
1.	Sagaing	2,068	10,622
2.	Magway	2,549	9,619
3.	Kachin	559	6,748
4.	Ayeyarwaddy	1,397	6,621
5.	Mandalay	1,060	6,533
6.	Shan (N)	326	2,555
7.	Bago	488	3,015
8.	Rakhine	361	3,209
9.	Naypyitaw	19	1,515
10.	Yangon	47	1,425
11.	Tanintharyi	134	923
12.	Shan(S)	108	957
13.	Shan (E)	39	680
14.	Chin	29	369
15.	Mon	27	206
16.	Kayah	18	295
17.	Kayin	75	317
<b>Total</b>		<b>9,304</b>	<b>55,609</b>

**COVID-19 laboratory confirmed cases among PUI by date of report(31.1.2020-8.5.2020),n(PUI)= 3,701, n (confirmed)=62**



# Timeline of Preparedness and Response to COVID-19 in Myanmar



## Summary of COVID-19 death (as of 8.5.2020)

<b>Sex distribution among death</b>	<p>Male = 5 Female = 1</p>	
<b>Travel history among death</b>	<p>Travel history (+) = 1 Travel history (-) = 5</p>	
<b>Contact history among death</b>	<p>Contact history(+) = 2 Contact history(-) = 4</p>	

- The mean age of death is 67.5 years with a range of 47 to 85 years.
- All death had underlying co-morbid conditions.
- The underlying diseases among COVID-19 death are —
  - ◆ Diabetes Mellitus , cardiovascular diseases and chronic kidney disease (n= 5)
  - ◆ Ca Nose ( n=1)