



Ministry of Health and Sports (Myanmar)

Department of Public Health

Central Epidemiology Unit

(23 May 2020)

Coronavirus Disease 2019 (COVID-19)

Situation Report - 46

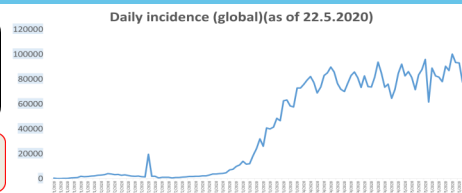
Data as reported by States and Regions by 12:00 Midnight MST 22 May 2020

Global Situation
(WHO situation report - 122)
data as of 14:30 MST 22 May 2020

Confirmed cases
4,993,470

Deaths
327,738

Case Fatality Rate
6.5 %



Myanmar Situation

Total tested
17,875

Confirmed cases
201

Negative
17,674

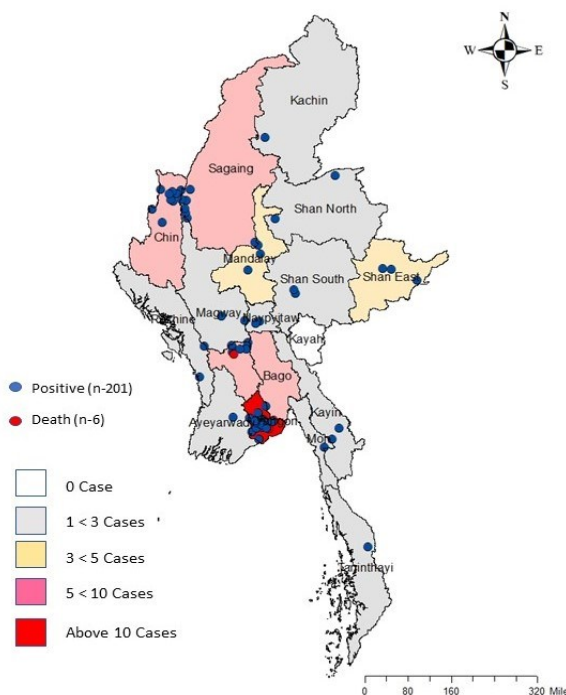
Recovered
120
59.7 % of confirmed cases

Active
75
37.3% of confirmed cases

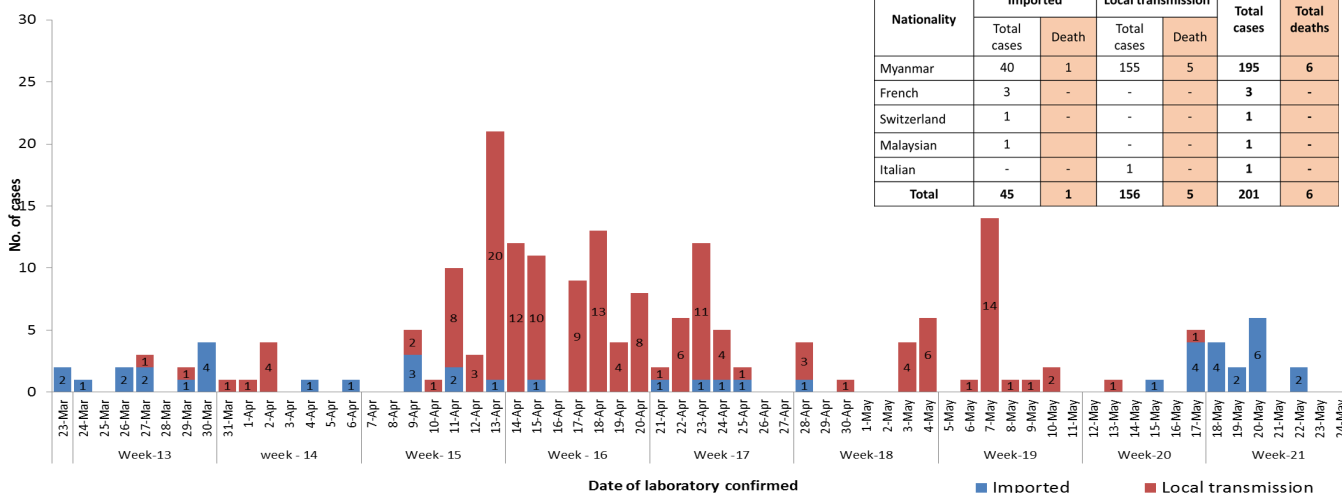
Death
6
2.9% of confirmed cases

No.	State/Region	COVID -19 Confirmed case	Recovered	Deaths
1.	Yangon	156	92 (3 new)	5
2.	Chin	9 (2 new)	2	-
3.	Bago	7	6 (1 new)	1
4.	Sagaing	7	6	-
5.	Shan(East)	3	2	-
6.	Mandalay	3	3	-
7.	Shan(South)	2	2	-
8.	Shan(North)	2	2	-
9.	Naypyitaw	2	2	-
10.	Kayin	2	-	-
11.	Magway	2	1	-
12.	Rakhine	2	-	-
13.	Mon	1	1	-
14.	Kachin	1	1	-
15.	Thanintharyi	1	-	-
16.	Ayeyarwaddy	1	-	-
17.	Kayah	-	-	-
Total		201 (2 new)	120 (4 new)	6

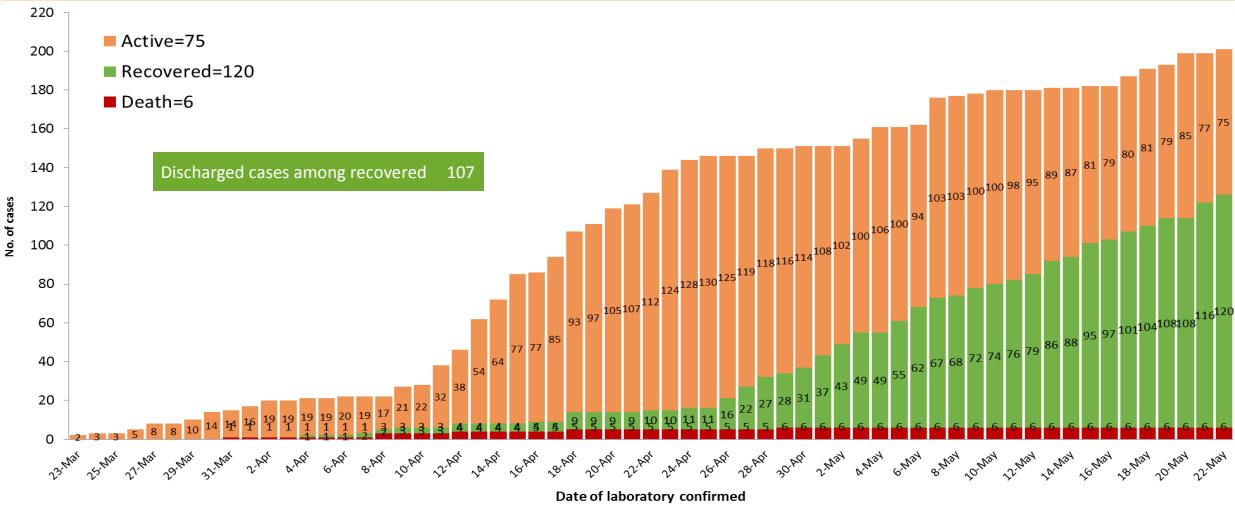
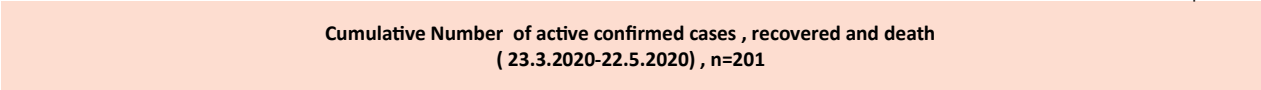
Map showing COVID-19 laboratory confirmed cases



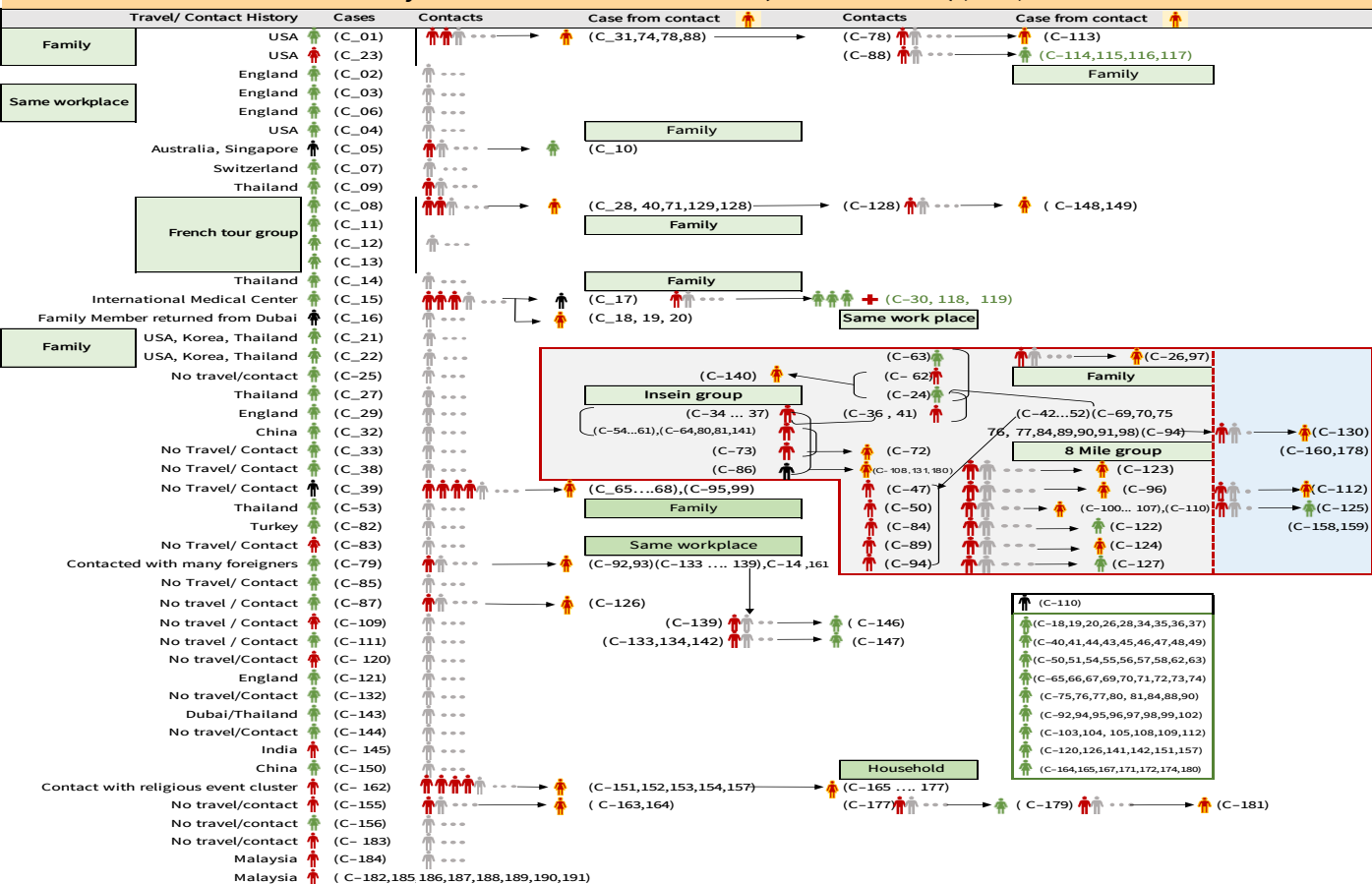
COVID-19 confirmed cases by types of transmissions (as of 22-5-2020,12:00 midnight) n=201



Total laboratory confirmed cases by date (as of 22.5.2020, 12:00 Midnight), n= 201



Summary of COVID-19 confirmed cases (as of 22-5-2020) ,n= 3,944



Summary of current situation

Type	New (21.5.2020–22.5.2020)	Total (on 22.5.2020)
Suspected and Person Under Investigation (PUI)	35	293
Hospital Quarantine	6	119
Facility Quarantine	2,149	59,694

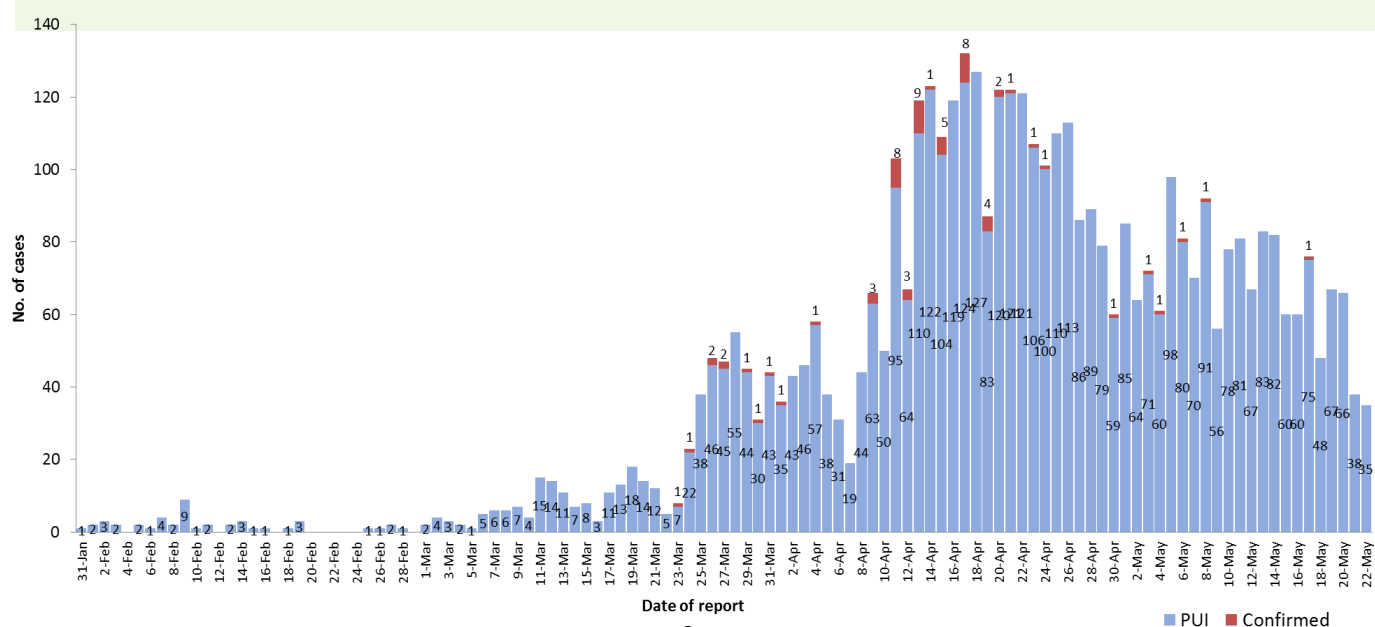
Person under Investigation (PUI) by State/Region hospitals (31.1.2020 – 22.5.2020) n= 4,598

No.	State/Region	PUI
1.	Yangon	2,381
2.	Mandalay	802
3.	Shan (N)	179
4.	Bago	168
5.	Mon	157
6.	Magway	152
7.	Kayin	147
8.	Shan (E)	94
9.	Ayeyarwaddy	92
10.	Shan (S)	81
11.	Sagaing	74
12.	Kayah	66
13.	Naypyitaw	60
14.	Rakhine	50
15.	Tanintharyi	50
16.	Kachin	26
17.	Chin	19
Total		4,598

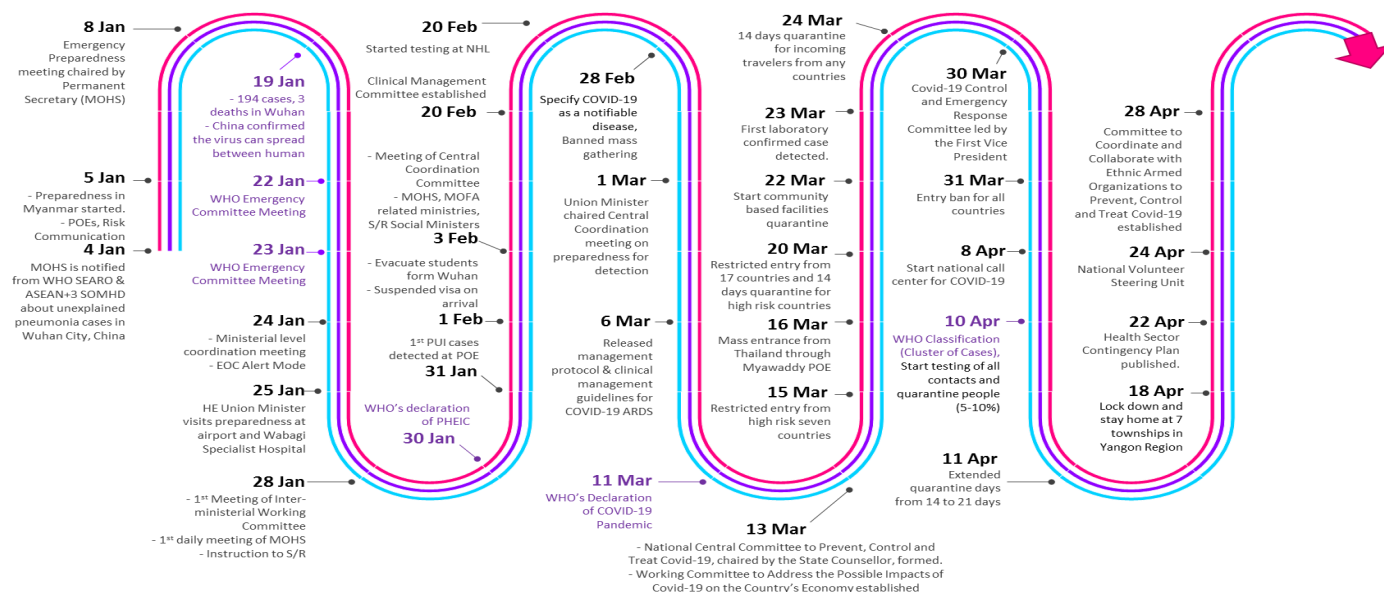
No. of Facility Quarantine sites and Quarantined people on 22.5.2020

No.	State/Region	No. of facilities	Total no. of quarantine people
1.	Magway	2,871	11,596
2.	Sagaing	2,105	9,322
3.	Mandalay	1,226	7,298
4.	Kachin	610	6,610
5.	Ayeyarwaddy	1,543	5,667
6.	Rakhine	758	4,512
7.	Bago	514	3,485
8.	Shan (N)	343	2,766
9.	Yangon	55	2,533
10.	Tanintharyi	189	1,302
11.	Shan(S)	114	1,202
12.	Naypyitaw	19	1,148
13.	Kayin	167	700
14.	Shan (E)	41	625
15.	Chin	38	373
16.	Mon	32	367
17.	Kayah	18	188
Total		10,643	59,694

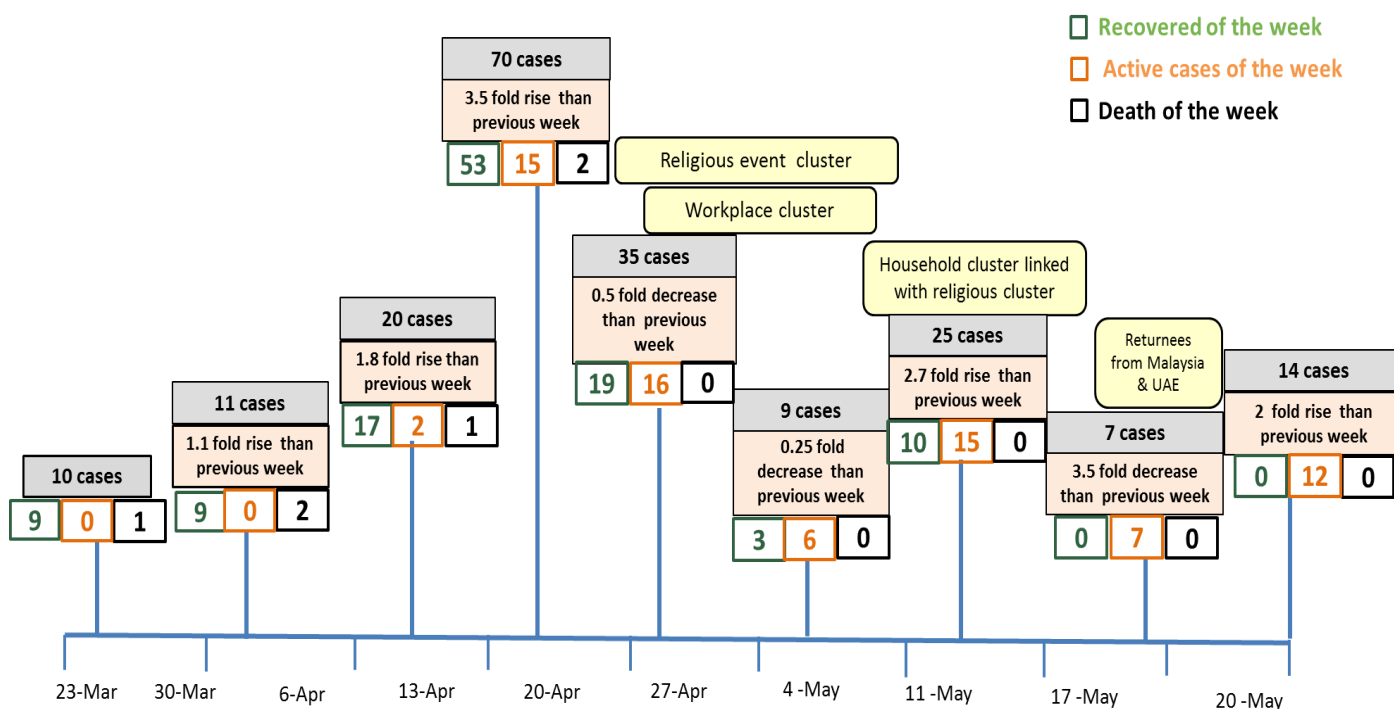
COVID-19 confirmed cases among PUI by date (as of 22.5.2020) n (PUI) = 4598, n (confirmed)= 63



Timeline of Preparedness and Response to COVID-19 in Myanmar (as of 22.5.2020)



Summary of new confirmed cases detection after first two cases (as of 22.5.2020)



- Confirmed cases were detected as peak in the 4th week after first confirmed cases due to religious event cluster.
- Confirmed cases were decreased but still raised than the first 3 weeks due to religious event cluster and workplace cluster.
- There were an increased in numbers of cases in week 7th after the first two cases due to household cluster linked with religious cluster.
- Confirmed cases were detected again in week 8 after the first two cases because of returnees.

Hotline Number— 0673420268

Data source - CEU, DMS, NHL, DMR, States and Regions Health Department